

**Chabot-Las Positas
Community College District**

**Student
Characteristics
and
Outcomes
2008-2009**

**Executive Summary
for the Governing Board**

Chabot College Office of Institutional Research

**Chabot-Las Positas
Community College District**

**Student
Characteristics
and
Outcomes
2008-2009**

**Executive Summary
for the Governing Board**

September 2009

**Prepared by:
Carolyn Arnold, Coordinator of Institutional Research and Grants
Rajinder S. Samra, Research Analyst**

Chabot College Office of Institutional Research

Chabot • Las Positas Community College District

**Board of Trustees
2009-2010**

Dr. Hal Gin, President

Mr. Donald L. “Dobie” Gelles, Secretary

Dr. Arnulfo Cedillo

Mrs. Isobel F. Dvorsky

Dr. Alison Lewis

Dr. Barbara Mertes

Mr. Carlo Vecchiarelli

Mr. Evani Gill, Chabot College Student Trustee

Mr. Sudharsan Dwaraknath, Las Positas College Student Trustee

Dr. Joel Kinnamon, Chancellor

Dr. Celia Barberena, President, Chabot College

Dr. DeRionne Pollard, President, Las Positas College

Chabot and Las Positas Colleges Student Characteristics and Outcomes

Table of Contents

	Page
I. Student Characteristics	
Student Characteristics:	
Comparisons to all California Community Colleges: Fall 2008.....	1
Enrollment status, Enrollment pattern, Educational goal, Gender, Race-ethnicity, Age, Educational level	
Student Characteristics: Fall 2008	2
Student type, Citizenship, Official residence, Previous college of students transferring into C-LPCCD, Local residence, High school districts of origin of new students	
II. Student Outcomes	
Definitions: Success, withdrawal, persistence and transfer rates	3
Student Outcomes: Comparisons to all California Community Colleges:.....	4
Course success and withdrawal rates: Fall 2008	
Persistence rates: Fall 2008 to Spring 2009	
Transfer rates: 1993-2001	
Course success and withdrawal rates: Fall 1995 to Fall 2008	
Chabot College.....	5
Las Positas College	6
Persistence rates of new students by gender and race-ethnicity:	
Fall 1997 to Spring 1998 through Fall 2008 to Spring 2009	
Chabot College.....	7
Las Positas College	8
Persistence rates of new students by Matriculation service:	
Fall 2001 to Spring 2002 through Fall 2008 to Spring 2009	
Chabot College.....	9
Las Positas College	10
AA/AS Degrees and Occupational Certificates: 1995-2009.....	11
Transfer rates and number of transfers: by college and statewide: 2000-2008.....	12
Transfer trends to CSU and UC: by college and statewide: 1993-2008.....	13
Top Public Universities of Chabot Transfers: Academic Years 1998-99 to 2007-08.....	14
Top Public Universities of Las Positas Transfers: Academic Years 1998-99 to 2007-08.....	15

Chabot and Las Positas Colleges Student Characteristics

Comparisons to all California Community Colleges (CCC's)

Chabot College students are similar to the statewide percentages in a number of areas, such as gender, age groups, and most enrollment status categories and educational goals. However, Chabot has more race-ethnicity diversity than the state, a larger percentage of day or day and evening students, and more students with educational goal of other or undecided. Chabot, on the other hand, has smaller percentages of returning students and those with personal development as their educational goal. Las Positas students are similar to the statewide percentages in a number of areas as well—gender, educational levels, and most enrollment status categories and educational goals. However, Las Positas has higher proportions of students age 19 or younger, day or day and evening students, and those with educational goal of other or undecided. In addition, Las Positas has a lower proportion of returning students. The race-ethnicity of Las Positas students is less diverse than the state, but it reflects its local population.

Total Students:	Fall 2008	Fall 2008		Total Students:	Fall 2008	Fall 2008	
	All CCC's	Chabot	LPC		All CCC's	Chabot	LPC
	1,810,773	15,055	9,100		1,810,773	15,055	9,100
	<u>Percentage of Students</u>				<u>Percentage of Students</u>		
<u>Enrollment Status*</u>				<u>Gender*</u>			
First time any college	19%	19%	20%	Female	56%	55%	54%
New transfer	10%	10%	11%	Male	44%	45%	46%
Returning***	20%	12%	12%				
Continuing	51%	56%	56%				
In High School	**	2%	2%	<u>Race-ethnicity</u>			
				African-American	7%	15%	4%
				Asian-Amer/Pac Is.	12%	19%	12%
				Filipino	3%	9%	4%
				Latino	30%	26%	16%
				Native American	1%	1%	1%
				White	34%	21%	51%
				Other	2%	2%	2%
				Unknown	10%	7%	9%
<u>Enrollment Pattern*</u>				<u>Age*</u>			
Day or Day & Eve	70%	85%	77%	19 or younger	26%	24%	32%
Evening or Eve & Sat	30%	15%	23%	20-24	28%	30%	28%
				25-29	12%	14%	10%
				30-39	13%	13%	11%
				40-49	9%	8%	9%
				50 or older	12%	10%	9%
<u>Educational Goal*+</u>				<u>Student Educational Level*</u>			
Transfer				Special Admit K-12	4%	4%	2%
(with/without AA/AS)	46%	44%	49%	Freshman (< 30 units)	59%	57%	58%
AA/AS only				Sophomore (30-59 un.)	13%	15%	16%
(not transfer)	10%	10%	7%	Other undergraduate	9%	8%	7%
Occupational certificate				AA/AS degree	5%	6%	6%
or job training	15%	15%	15%	BA/BS or higher deg.	10%	9%	12%
Personal development							
(intellectual/cultural,							
(basic skills, GED)	13%	8%	10%				
Other or Undecided	16%	22%	20%				

NOTES: * Students with 'unknown' characteristics are not included. ** Not available. ***Includes both returning and returning transfer students.

+ Statewide educational goal is shown for Fall 2007 because that is the latest fall data that was available at the time this report was published.

SOURCES: All CCC's: Chancellor's Office MIS Statistical Library

Chabot and Las Positas Colleges: C-LPCCD Institutional Research Dataset, Fall Final Census

Statewide Educational Goal: special data request provided by Myrna Huffman from the CCC's Chancellor's Office.

Chabot College Office of Institutional Research

Chabot and Las Positas Colleges Student Characteristics

Fall 2008 Census

	Number		Percentage			Number		Percentage	
	Chabot	LPC	Chabot	LPC		Chabot	LPC	Chabot	LPC
Total Students:	15,055	9,100	100%	100%	Total Students:	15,055	9,100	100%	100%
Student Type					Local residence: District and other cities *				
Full-time					Chabot District			63%	8%
12 or more units	4,365	3,307	29%	36%	Hayward	4,324	121	29%	1%
Part-time					San Leandro	1,907	81	13%	1%
6 to 11.5 units	4,577	2,672	30%	29%	Union City	1,466	25	10%	<1%
.5 to 5.5 units	5,997	3,117	40%	34%	Castro Valley	1,007	465	7%	5%
Only Non-credit units	116	4	1%	<1%	San Lorenzo	790	30	5%	0%
					Las Positas District			3%	60%
					Livermore	128	2,782	1%	31%
					Pleasanton	160	1,891	1%	21%
					Dublin	115	809	1%	9%
					Other major cities (over 100 students)			17%	17%
					Fremont	1,014	67	7%	1%
					Oakland	1,001	54	7%	1%
					Newark	314	10	2%	0%
					Alameda	182	14	1%	0%
					Tracy	72	796	<1%	9%
					San Ramon	67	431	<1%	5%
					Danville	37	150	<1%	2%
					Other local cities**	528	213	4%	2%
Citizenship					New Students: High school districts of origin				
U.S. Citizen	12,738	8,246	85%	91%					
Permanent Resident	1,654	569	11%	6%					
Student Visa	113	109	1%	1%					
Other	545	171	4%	2%					
Unknown	5	5	0%	<1%					
Official residence									
District Resident	9,735	6,125	65%	67%					
Other CA Districts	5,017	2,800	33%	31%					
Other States	126	36	1%	<1%					
Other Countries	177	139	1%	2%					
Previous college of students transferring into C-LPCCD									
Total transfers:	3,077	1,891							
CA Comm. College	1,679	1,018	55%	54%					
California State U.	364	195	12%	10%					
University of Cal.	116	71	4%	4%					
CA private colleges	150	105	5%	6%					
Out of state	336	274	11%	14%					
Out of country	188	154	6%	8%					
Unknown	244	74	8%	4%					
			100%	100%					
					All new students:	2,587	1,744	100%	100%

NOTE: * Does not include students with unknown Zip

** Other local cities: Berkeley, Concord, Pittsburg, Walnut Creek, Antioch, Richmond, and cities in Santa Clara County, San Francisco County, and San Mateo County.

SOURCE: C-LPCCD Institutional Research Dataset, Fall Final Census

Chabot and Las Positas Colleges

Student Outcomes

Definitions

Success, withdrawal, and persistence rates

Terms used

Enrollments/enrolled:	Enrolled on Census Day (end of 4th week) and received an A-F, Credit (CR), No Credit (NC), Withdrawal (W) or Incomplete (I)
By course enrollments:	Total based on every COURSE enrollment, so students are counted for each course section taken
By students:	Total based on the number of STUDENTS (headcount), regardless of number of courses taken
Success in course:	Enrolled at end of course and received an A, B, C, or Credit
Non-success in course:	Enrolled at end of course and received a D, F, No Credit, or Incomplete
Completion of course:	Enrolled at end of course and received a successful or non-successful grade
Withdrawal:	Dropped or left course after Census and received a withdrawal

Definitions

Course success, non-success, and withdrawal rates

Total enrollments: Successful grades + Non-successful grades + Withdrawals

Course success rate: = $\frac{\text{Number of successful grades}}{\text{Total enrollments}} * 100$

Course non-success rate: = $\frac{\text{Number of non-successful grades}}{\text{Total enrollments}} * 100$

Course withdrawal rate: = $\frac{\text{Number of withdrawals}}{\text{Total enrollments}} * 100$

Student withdrawal rates

Total students: Number of students enrolled on Census Day

Student withdrawal rate: = $\frac{\text{Number of students with a withdrawal in all their courses}}{\text{Total students}} * 100$

Persistence from term to term

Of students who enroll by Census Day in at least one course during one term (term 1), the percentage who are enrolled in at least one course by Census Day in the following term (term 2)

Persistence rate: = $\frac{\text{Number of students enrolled in any courses in term 2}}{\text{Number of students enrolled in any courses in term 1}} * 100$

Transfer rates (calculated by the California Community Colleges Chancellor's Office)

Actual transfer rate: Of those who enrolled in a California Community College (CCC) as a first-time student in a fall term and, who, within a period of six years 1) attempted transfer-level math or English (regardless of outcome) and 2) completed at least 12 units in the CCC system, the percentage who transferred to a four-year college or university nationwide.

Expected transfer rate: The actual transfer rate is calculated for each community college and adjusted for five factors that are outside the control of local colleges: academic preparedness index, percentage of students over the age of 25, county per capita income, county unemployment rate, and miles to the nearest CSU.

Chabot and Las Positas Colleges Student Outcomes

Comparisons* to all California Community Colleges (CCC's)

Compared to the state average for all California community colleges, Chabot has a slightly lower success rate and Las Positas has a slightly higher success rate. However, both Chabot and Las Positas students' overall persistence rates are above the state average. In addition, both colleges have transfer rates at or above their expected rates.

Course Success and Withdrawal Rates: Fall 2008

	All CCC's	Chabot	LPC
Total Credit Enrollments:	4,226,266	40,060	26,450
Percentage of Enrollments			
Success (A,B,C,CR)	67%	65%	68%
Non-success (D,F,NC,I)	17%	16%	15%
Withdrawal	<u>16%</u>	<u>19%</u>	<u>18%</u>
Total Percentage	100%	100%	100%

Persistence Rates**: Fall 2008 to Spring 2009

	All CCC's *	Chabot	LPC
All Students in Fall:	1,722,890	15,055	9,100
Percentage who persist from Fall to Spring			
Percentage of all students:	60%	66%	69%
Type of student			
New	59%	69%	76%
Continuing	69%	72%	73%
New transfer	44%	54%	56%
Returning	48%	50%	49%

Transfer Rates to Four-year Colleges: 1993 to 2001

<u>Cohorts</u>	Transfer Rate*					
	All CCC's		Chabot		Las Positas	
	Actual	Expected	Actual	Expected	Actual	Expected
1993-1999 Cohort	32.0%	-	34.6%	33.8%	40.7%	38.6%
1994-2000 Cohort	33.7%	-	33.7%	34.8%	40.4%	39.2%
1995-2001 Cohort	34.2%	-	37.8%	32.2%	41.4%	40.2%

NOTES: Latest available comparison data for all California Community Colleges

*A college's transfer rate should be compared with its own expected rate, rather than with the transfer rate of other colleges. See definitions of actual and expected transfer rates on pages 3 and 12.

** Persistence rates for all California Community Colleges are shown for Fall 2007 to Spring 2008.

* Statewide persistence is shown for Fall 2007 to Spring 2008 because that is the latest statewide persistence data that was available at the time this report was published.

SOURCES: <<http://misweb.cccco.edu/mis/onlinestat/onlinestat.cfm>>; C-LPCCD Institutional Research Dataset; Chancellor's Office, *Transfer Capacity and Readiness in the California Community College*, March 2002.

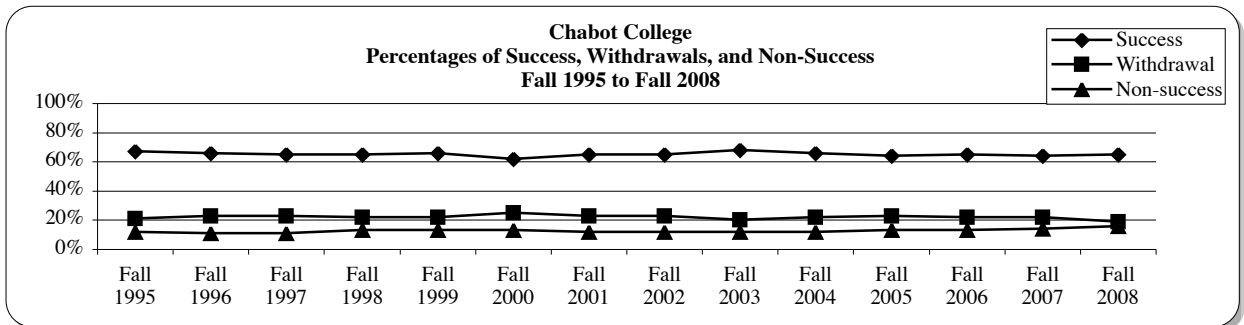
Persistence rate for all CCCs: special data request provided by Tonia Lu from the CCC's Chancellor's Office.

Chabot College
Course success and withdrawal rates, by courses and students
Fall 1995 to Fall 2008
All students

Except for Fall 2000, from Fall 1995 to Fall 2008, success rates have been very stable at Chabot—they have not fluctuated by more than two percentage points around a success rate of 66 percent. Withdrawal rates have also been stable for most years, but have dropped three percentage points in Fall 2008 to 19 percent. Furthermore, the percentage of students who withdrew from all courses has not changed by more than two percentage points from 14 percent.

By course enrollments				
Quarter/ semester	Number of course enrollments at Census	Percentage of course enrollments		
		Success (A,B,C, CR)	Non-success (D, F, NC, I)	Withdrawal (W)
Fall 1995	37,127	67%	12%	21%
Fall 1996	37,753	66%	11%	23%
Fall 1997	36,916	65%	11%	23%
Fall 1998	36,683	65%	13%	22%
Fall 1999	37,355	66%	13%	22%
Fall 2000	36,173	62%	13%	25%
Fall 2001	37,583	65%	12%	23%
Fall 2002	41,583	65%	12%	23%
Fall 2003	39,783	68%	12%	20%
Fall 2004	40,032	66%	12%	22%
Fall 2005	38,746	64%	13%	23%
Fall 2006	37,482	65%	13%	22%
Fall 2007	38,146	64%	14%	22%
Fall 2008	40,060	65%	16%	19%

By students		
Quarter/ semester	Number of students enrolled	Percentage of students
		Withdrew from all courses
Fall 1995	13,309	13%
Fall 1996	13,563	14%
Fall 1997	13,495	14%
Fall 1998	13,594	13%
Fall 1999	14,134	13%
Fall 2000	14,252	16%
Fall 2001	15,149	14%
Fall 2002	16,339	14%
Fall 2003	15,075	12%
Fall 2004	15,226	13%
Fall 2005	14,441	13%
Fall 2006	13,942	13%
Fall 2007	14,328	13%
Fall 2008	15,055	13%



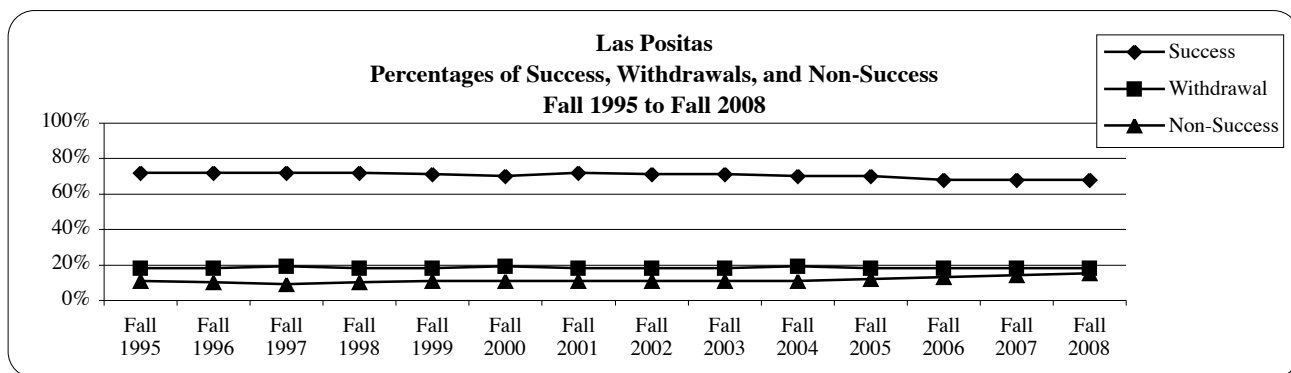
Las Positas College
Course success and withdrawal rates, by courses and students
Fall 1995 to Fall 2008

All students

Since Fall 1995, both withdrawal rates and success rates have remained virtually the same at Las Positas College— they have not varied by more than two percentage points from a success rate of 70 percent and a withdrawal rate of 18 percent. In addition, the percentage of students who withdrew from all courses has not varied by more than two percentage points from 10 percent.

By course enrollments				
Quarter/ semester	Number of course enrollments at Census	Percentage of course enrollments		
		Success (A,B,C, CR)	Non-success (D, F, NC, I)	Withdrawal (W)
Fall 1995	14,278	72%	11%	18%
Fall 1996	15,088	72%	10%	18%
Fall 1997	16,674	72%	9%	19%
Fall 1998	18,203	72%	10%	18%
Fall 1999	18,287	71%	11%	18%
Fall 2000	19,127	70%	11%	19%
Fall 2001	20,010	72%	11%	18%
Fall 2002	22,087	71%	11%	18%
Fall 2003	20,432	71%	11%	18%
Fall 2004	20,604	70%	11%	19%
Fall 2005	20,682	70%	12%	18%
Fall 2006	22,328	68%	13%	18%
Fall 2007	24,433	68%	14%	18%
Fall 2008	26,450	68%	15%	18%

By students		
Quarter/ semester	Number of students enrolled	Percentage of students
		Withdrew from all courses
Fall 1995	5,572	11%
Fall 1996	5,915	12%
Fall 1997	6,412	12%
Fall 1998	6,978	11%
Fall 1999	6,951	10%
Fall 2000	7,413	12%
Fall 2001	7,853	11%
Fall 2002	8,588	11%
Fall 2003	7,395	11%
Fall 2004	7,334	11%
Fall 2005	7,332	11%
Fall 2006	7,796	10%
Fall 2007	8,451	10%
Fall 2008	9,100	9%



Chabot College
Persistence rates of new students
by gender and race-ethnicity
Fall 1997 to Spring 1998 through Fall 2008 to Spring 2009
New students

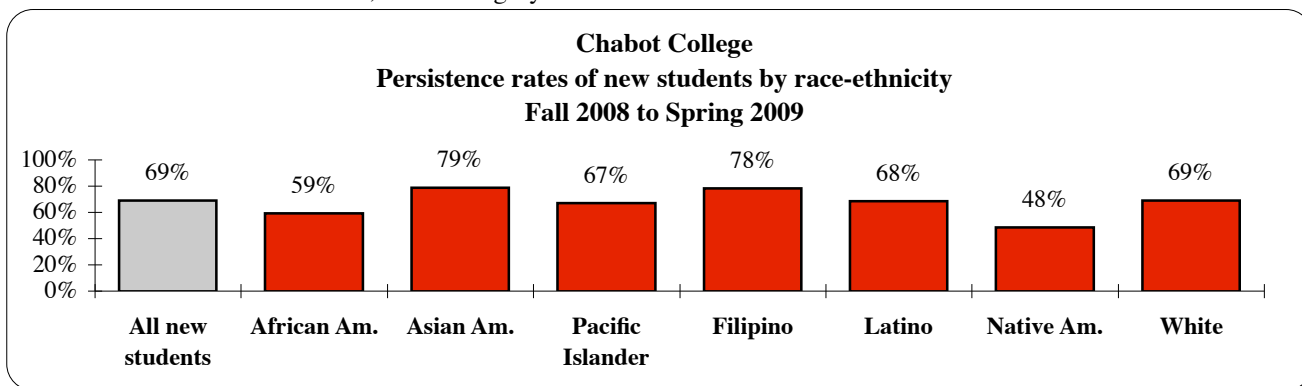
Persistence rates measure the proportion of students in one term who continue to enroll in college from one term to the next. Term to term persistence rates are defined as the percentage of students enrolled as of Census Day in the first term who are subsequently enrolled as of Census Day in the following term.

Usually, almost two thirds of new students in the Fall persist to the Spring semester. In Fall 2008, the persistence rate of new students was 69 percent, which is a four percentage point increase from the previous year. Students in most of the race-ethnicity groups were near or above this average. However, in Fall 2008, African-American and Native American students had persistence rates that were at least 10 percentage points lower than the average rate.

Persistence rates of new students

	All New Stds.	Gender		Race-ethnicity								
		Female	Male	African Amer.	Asian Amer.	Pacific Islander	Filipino	Latino	Native Amer.	Middle Eastern	White	Other
Fall enrollments												
Fall 97	2,159	1,120	981	354	308	55	165	449	21	21	677	109
Fall 98	1,933	954	927	314	309	65	141	424	28	26	521	105
Fall 99	2,256	1,127	1,073	398	345	65	151	524	24	35	598	116
Fall 00	2,086	1,031	1,010	303	351	64	182	513	20	25	500	128
Fall 01	2,505	1,291	1,111	326	397	65	195	529	27	31	788	147
Fall 02	2,499	1,309	1,106	320	381	70	197	636	*	37	710	133
Fall 03	2,334	1,179	1,094	346	395	47	210	658	*	23	528	112
Fall 04	2,771	1,425	1,264	429	400	85	238	734	21	26	628	210
Fall 05	2,862	1,447	1,332	482	411	97	261	755	24	*	581	243
Fall 06	2,650	1,277	1,288	431	394	83	215	722	30	*	533	237
Fall 07	2,650	1,307	1,280	462	380	76	222	801	*	*	444	242
Fall 08	2,889	1,305	1,507	490	371	88	251	937	27	*	473	247
Fall to Spring persistence rates												
F97/S98	63%	66%	62%	58%	75%	64%	67%	65%	62%	57%	59%	62%
F98/S99	64%	66%	62%	53%	73%	58%	65%	60%	61%	77%	67%	67%
F99/S00	63%	63%	63%	52%	75%	57%	72%	57%	50%	77%	67%	59%
F00/S01	64%	68%	62%	52%	76%	61%	69%	63%	70%	60%	63%	67%
F01/S02	64%	65%	64%	63%	77%	60%	67%	61%	63%	52%	59%	73%
F02/S03	63%	64%	63%	54%	74%	60%	75%	64%	*	78%	58%	59%
F03/S04	68%	68%	69%	63%	75%	62%	72%	66%	*	65%	70%	71%
F04/S05	64%	65%	64%	54%	75%	67%	72%	64%	43%	50%	64%	58%
F05/S06	65%	66%	65%	57%	73%	69%	71%	61%	54%	*	69%	68%
F06/S07	64%	63%	65%	51%	74%	63%	74%	62%	57%	*	64%	69%
F07/S08	65%	65%	65%	53%	75%	70%	70%	63%	*	*	68%	64%
F08/S09	69%	69%	70%	59%	79%	67%	78%	68%	48%	*	69%	69%

NOTES: * Less than 20 Students; Other category includes other and unknown.



Las Positas College
Persistence rates of new students
by gender and race-ethnicity
Fall 1997 to Spring 1998 through Fall 2008 to Spring 2009

New students

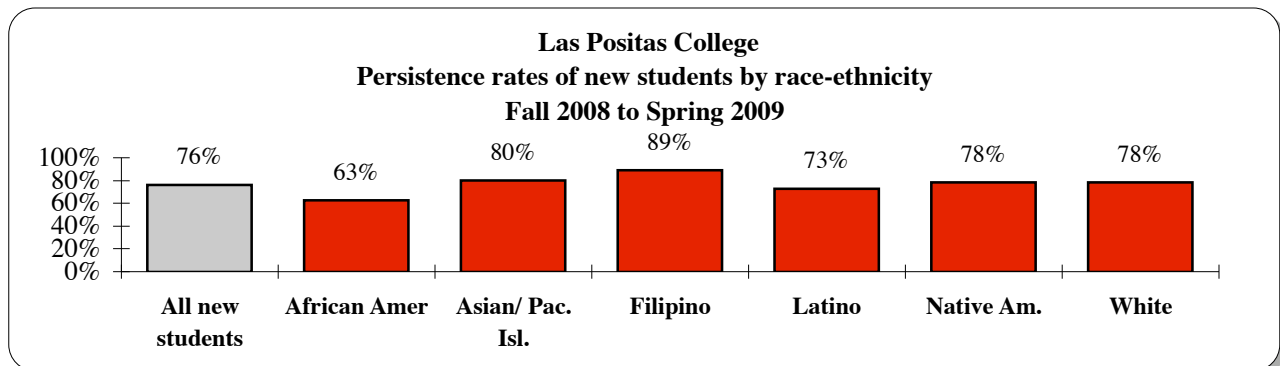
Persistence rates measure the proportion of students in one term who continue to enroll in college from one term to the next. Term to term persistence rates are defined as the percentage of students enrolled as of Census Day in the first term who are subsequently enrolled as of Census Day in the following term.

Persistence rates of new students increased from about two thirds in Fall 1997 to a little over three fourths by Fall 2003. The persistence rate for Fall 2008 was 76 percent. Females had a higher persistence rate at 80 percent than males who had a persistence rate of 73 percent. Most race-ethnicity groups had persistence rates that were near or above the average. However, African Americans had persistence rates that were 13 percentage points lower than the average rate.

Persistence rates of new students

	All New Students	Gender		Race-ethnicity						
		Female	Male	African Amer.	Asian Am/ Pac. Isl	Filipino	Latino	Native Amer.	White	Other
Fall enrollments										
Fall 97	1,113	554	554	23	70	*	118	*	809	62
Fall 98	1,119	575	536	27	60	28	139	*	773	77
Fall 99	1,124	572	541	28	58	28	155	*	775	69
Fall 00	1,334	666	649	35	78	30	191	*	902	84
Fall 01	1,327	697	610	30	102	36	195	*	861	93
Fall 02	1,483	763	706	38	98	44	243	*	951	99
Fall 03	1,434	702	726	47	96	41	225	*	912	102
Fall 04	1,517	775	731	45	105	48	241	*	920	123
Fall 05	1,568	780	764	57	159	58	265	*	856	157
Fall 06	1,590	752	800	65	133	59	289	25	823	196
Fall 07	1,749	799	897	69	164	59	336	*	893	216
Fall 08	1,787	830	913	91	196	62	310	23	882	223
Fall to Spring persistence rates										
F97/S98	65%	67%	64%	57%	69%	*	57%	*	66%	69%
F98/S99	69%	73%	64%	63%	68%	68%	69%	*	69%	71%
F99/S00	64%	67%	60%	32%	76%	50%	62%	*	65%	61%
F00/S01	69%	70%	69%	54%	74%	87%	60%	*	71%	69%
F01/S02	71%	75%	67%	63%	78%	78%	69%	*	72%	67%
F02/S03	73%	76%	71%	53%	77%	82%	68%	*	76%	69%
F03/S04	76%	76%	77%	70%	77%	80%	70%	*	78%	74%
F04/S05	76%	71%	82%	71%	82%	71%	71%	*	78%	88%
F05/S06	77%	77%	77%	58%	78%	74%	75%	*	80%	70%
F06/S07	78%	84%	72%	69%	83%	88%	73%	64%	78%	79%
F07/S08	77%	80%	74%	65%	77%	86%	73%	*	78%	78%
F08/S09	76%	80%	73%	63%	80%	89%	73%	78%	78%	70%

NOTES: * Less than 20 students; Other category includes Middle Eastern, other, and unknown.



Chabot College
Persistence rates of new students
by Student Services
Fall 2001 to Spring 2002 through Fall 2008 to Spring 2009

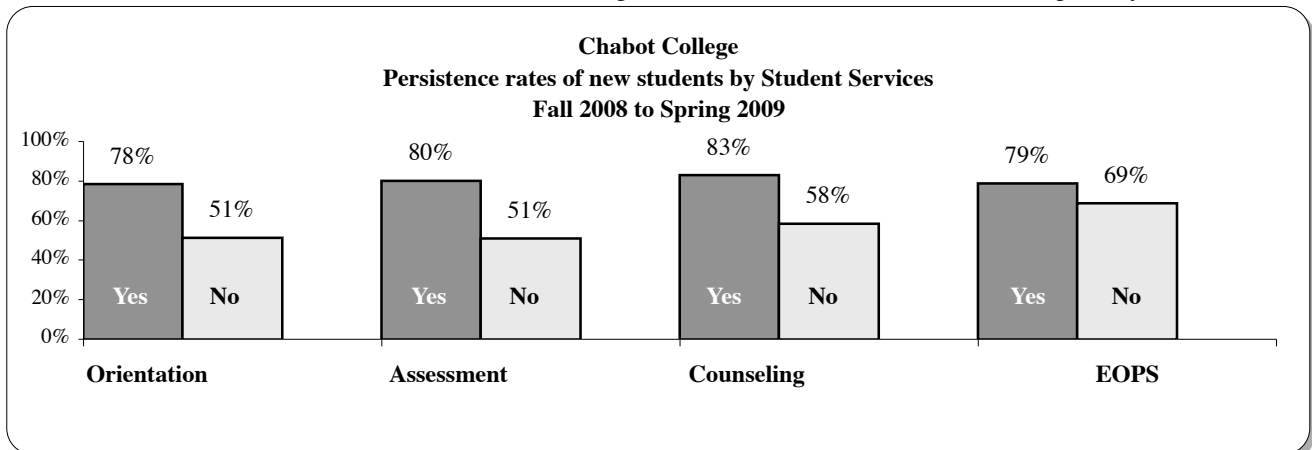
Persistence rates measure the proportion of students in one term who continue to enroll in college from one term to the next. Term to term persistence rates are defined as the percentage of students enrolled as of Census Day in the first term who are subsequently enrolled as of Census Day in the following term.

On average, almost two thirds of new students enrolled in the Fall continued enrolling in the Spring semester. However, the persistence rates of new students who received the Matriculation services of orientation, assessment, counseling, or participated in Extended Opportunity Programs and Services (EOPS) had higher persistence rates than new students without those services.

Persistence rates of new students

	All New Stds.	Matriculation Services							
		Orientation		Assessment		Counseling		EOPS	
		Yes	No	Yes	No	Yes	No	Yes	No
Fall enrollments									
Fall 01	2,505	577	1,928	1,167	1,338	752	1,753	85	2,420
Fall 02	2,499	891	1,608	1,349	1,150	1,112	1,387	98	2,401
Fall 03	2,333	1,286	1,047	1,378	955	639	1,694	97	2,236
Fall 04	2,767	1,439	1,328	1,720	1,047	753	2,014	116	2,651
Fall 05	2,862	1,406	1,456	1,796	1,066	910	1,952	117	2,745
Fall 06	2,650	1,376	1,274	1,548	1,102	835	1,815	56	2,594
Fall 07	2,650	1,398	1,252	1,688	962	847	1,803	85	2,565
Fall 08	2,889	1,891	998	1,792	1,097	1,248	1,641	80	2,809
Fall to Spring persistence rates									
Fall01/S02	64%	73%	61%	73%	56%	78%	58%	88%	63%
Fall02/S03	63%	74%	57%	73%	52%	76%	53%	83%	62%
Fall03/S04	68%	73%	64%	76%	58%	85%	62%	84%	68%
Fall04/S05	64%	70%	58%	72%	52%	81%	58%	85%	63%
Fall05/S06	65%	69%	62%	73%	53%	79%	59%	77%	65%
Fall06/S07	64%	70%	58%	74%	51%	79%	57%	80%	63%
Fall07/S08	65%	72%	58%	73%	51%	80%	58%	86%	64%
Fall08/S09	69%	78%	51%	80%	51%	83%	58%	79%	69%

NOTE: Does not include some matriculation services given to DSPS and CalWorks students separately.



Las Positas College
Persistence rates of new students
by Student Services
Fall 2001 to Spring 2002 through Fall 2008 to Spring 2009

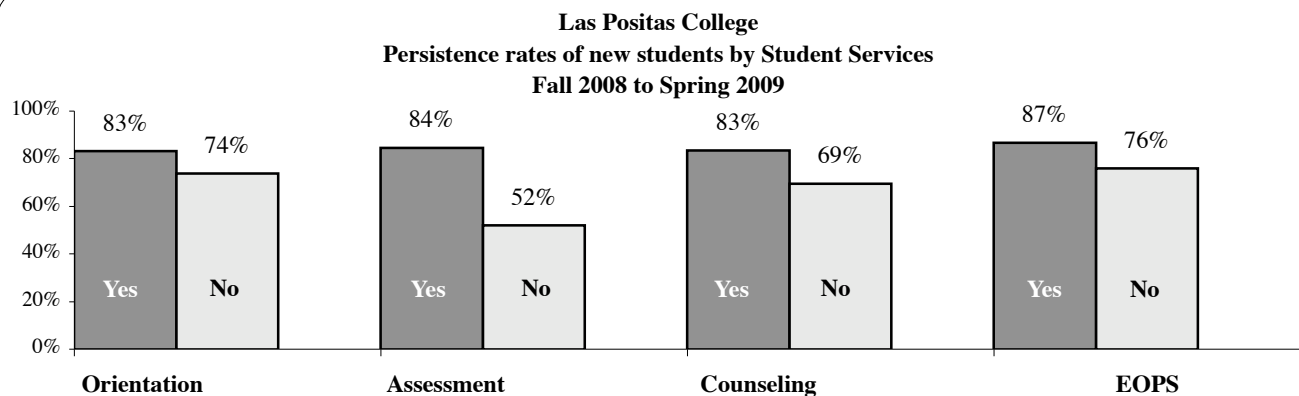
Persistence rates measure the proportion of students in one term who continue to enroll in college from one term to the next. Term to term persistence rates are defined as the percentage of students enrolled as of Census Day in the first term who are subsequently enrolled as of Census Day in the following term.

On average, about three fourths of new students enrolled in the Fall continued enrolling in the Spring semester. However, the persistence rates of new students who received the Matriculation services of orientation, assessment, counseling, or participated in Extended Opportunity Programs and Services (EOPS) had higher persistence rates than new students without those services.

Persistence rates of new students

	All New Stds.	Matriculation Services						EOPS	
		Orientation		Assessment		Counseling		Yes	No
		Yes	No	Yes	No	Yes	No		
Fall enrollments									
Fall 01	1,327	679	648	828	499	675	652	22	1,306
Fall 02	1,483	682	801	930	553	877	606	25	1,458
Fall 03	1,434	806	628	1,016	418	946	488	25	1,409
Fall 04	1,516	968	548	1,097	419	1,166	350	45	1,471
Fall 05	1,568	906	662	853	715	1,156	412	31	1,537
Fall 06	1,590	422	1,168	1,233	357	888	702	37	1,553
Fall 07	1,749	673	1,076	1,325	424	1,150	599	26	1,723
Fall 08	1,787	442	1,345	1,315	472	844	943	30	1,757
Fall to Spring persistence rates									
Fall01/S02	71%	82%	61%	80%	58%	83%	59%	95%	71%
Fall02/S03	73%	85%	64%	82%	60%	83%	60%	76%	73%
Fall03/S04	76%	85%	65%	82%	62%	83%	64%	88%	76%
Fall04/S05	77%	84%	63%	84%	58%	82%	59%	91%	76%
Fall05/S06	77%	85%	66%	82%	71%	82%	61%	84%	77%
Fall06/S07	78%	86%	75%	82%	62%	83%	71%	84%	78%
Fall07/S08	77%	88%	70%	84%	53%	83%	64%	73%	77%
Fall08/S09	76%	83%	74%	84%	52%	83%	69%	87%	76%

NOTE: Does not include some matriculation services given to DSPPS and CalWorks students separately.



Chabot and Las Positas Colleges

AA/AS Degrees and Occupational Certificates

1995-2009

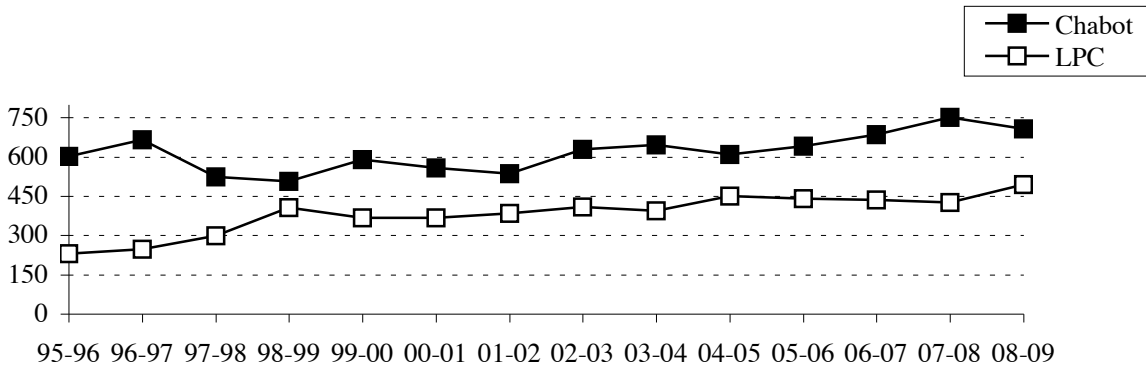
The table and graphs below display the number of degrees and certificates awarded at Chabot and Las Positas during the last fourteen years. In 2008-2009, Chabot awarded more certificates and fewer degrees than in the previous year, while Las Positas awarded more degrees and fewer certificates.

	95-96	96-97	97-98	98-99	99-00	00-01	01-02	02-03	03-04	04-05	05-06	06-07	07-08	08-09
Chabot														
Degrees	601	666	523	506	590	558	535	628	646	610	642	685	751	706
Certificates	137	155	159	138	175	188	180	285	301	258	252	306	210	265
Las Positas														
Degrees	190	229	246	299	405	366	385	409	395	449	441	435	426	493
Certificates	41	62	71	110	124	81	101	119	87	115	102	115	136	132

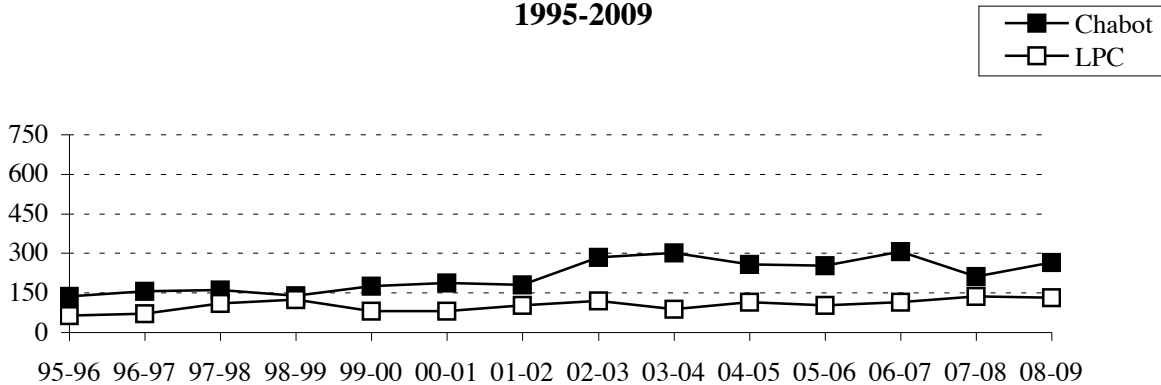
SOURCES: CLPCCD MIS/ITS degree/certificate reports for District, Chabot College, and Las Positas College.

NOTE: Includes degrees and certificates in the year awarded, regardless of the year earned.

Chabot and Las Positas Colleges Number of AA/AS Degrees by College and Year 1995-2009



Chabot and Las Positas Colleges Number of Certificates by College and Year 1995-2009



Chabot and Las Positas Colleges

Transfer rates and number of transfers: by college and statewide

Transfer numbers and transfer rates measure the number and percentage of community college students who transfer to four-year colleges. Although Chabot and Las Positas students transfer to many four-year colleges, the majority transfer to CSU and UC. Transfer rates include transfers to colleges nationwide, while transfer numbers are available only for CSU and UC. Chabot and Las Positas Colleges had transfer rates at or above their expected rates. Regarding the number of transfers, both Chabot and Las Positas Colleges experienced an increase in transfers to CSU and UC in 2007-2008. Below are transfer rates and numbers for Chabot and Las Positas Colleges and for all California Community Colleges. The following page contains graphs that display the trends in the numbers of transfers to CSU and UC.

Transfer Rates to Four-year Universities: 1993-2001

Transfer rates express the percentage of community college students who transfer to four-year colleges. The transfer rate depends upon how the group of potential transfer students is defined—should all students at the community college be considered potential transfer students, even if they do not intend to transfer, or should we consider only those who declare or act like they intend to transfer, such as those who take more than one course?

The state Chancellor's Office defines potential transfer students as those who enrolled in a California Community College (CCC) as a first-time student in a fall term and, who, within a period of six years: 1) attempted transfer-level math or English (regardless of the outcome) and 2) completed at least 12 units in the CCC system. To determine college and statewide transfer rates, the Chancellor's Office then looks for these students in four-year universities nationwide.

The Chancellor's Office cautions against comparing transfer rates between colleges due to five factors that are beyond the control of the colleges. The following five factors may positively or negatively affect transfer rate—academic preparedness index, percentage of students over the age of 25, county per-capita income, county unemployment rate, and miles to the nearest CSU. Expected transfer rates have been calculated for each college using these five variables. Therefore, a college's transfer rate should be compared with its own expected rate, rather than with the transfer rate of other colleges. Both Chabot and Las Positas had transfer rates at or above their expected rates.

Transfer Rates to a Four-year University for Chabot College, Las Positas College, and all California Community Colleges (CCC's): 1993-2001

Cohorts	Transfer Rate				
	Chabot College		Las Positas College		All CCC's
	Actual	Expected	Actual	Expected	Actual Expected
1993-1999 Cohort	34.6%	33.8%	40.7%	38.6%	32.0% –
1994-2000 Cohort	33.7%	34.8%	40.4%	39.2%	33.7% –
1995-2001 Cohort	37.8%	32.2%	41.4%	40.2%	34.2% –

SOURCE: Chancellor's Office, *Transfer Capacity and Readiness in the California Community Colleges, March 2002*

NOTE: The Chancellor's Office has calculated actual and expected transfer rates for only the above three cohorts.

Number of transfers to CSU/UC from Chabot College, Las Positas College, and all California Community Colleges (CCC's): Full academic years 2000-2008

Academic Year	Combined Fall and Spring transfers					
	Chabot		Las Positas		All CCC's	
	CSU	UC	CSU	UC	CSU	UC
2000-2001	628	127	213	56	47,900	11,215
2001-2002	613	132	278	76	50,743	12,291
2002-2003	660	120	291	80	50,746	12,780
2003-2004	564	140	281	83	48,321	12,580
2004-2005	636	149	331	90	53,565	13,211
2005-2006	580	153	385	100	52,640	13,508
2006-2007	556	135	408	107	54,379	13,923
2007-2008	624	140	415	115	54,970	13,964

SOURCE: California Postsecondary Education Commission.

Chabot and Las Positas Colleges

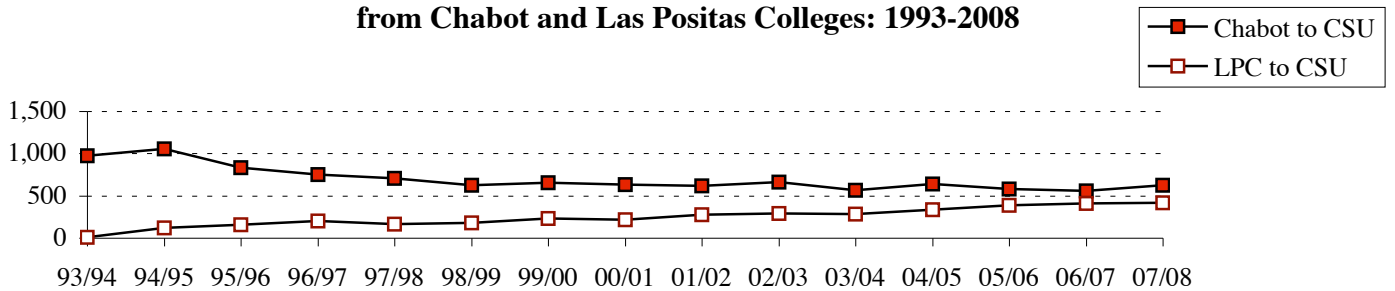
Transfer trends to CSU and UC: by college and statewide: 1993-2008

Many students rushed to transfer before Chabot transitioned from a quarter system to a semester system in Fall 1994. The number of transfers from Chabot to CSU rose to a high of 1,058 in 1994-95 and steadily declined until 1998-99. Since 1998-99, Chabot transfers to CSU have fluctuated, with transfers to CSU increasing in 2007-08. The number of Chabot transfers to UC increased to a high of 161 in 1994-95. Since 1994-95, Chabot transfers to UC have fluctuated, with transfers increasing to UC in 2007-08.

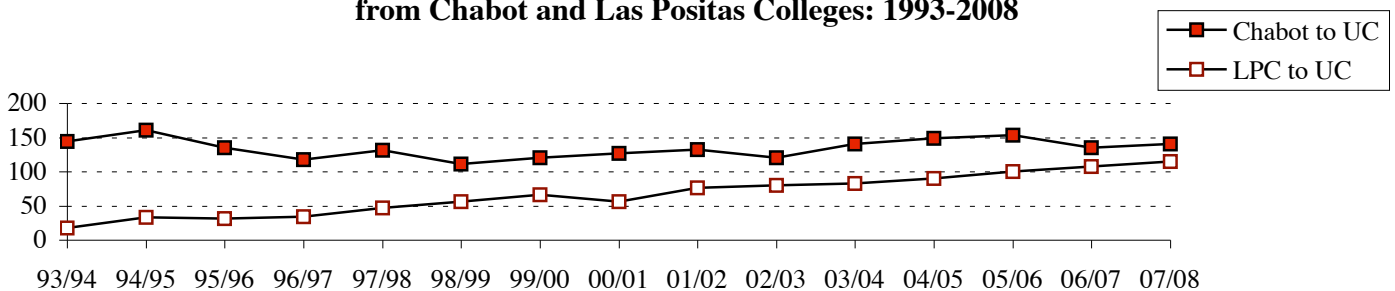
Las Positas has experienced an increase of transfers to both CSU and UC since it began tracking transfers. In 1993-94, Las Positas had nine transfers to CSU and 17 transfers to UC. In 2007-08, the numbers of transfers from Las Positas to CSU climbed to 415, and the number of transfers to UC rose to 115.

The number of transfers from all community colleges to CSU has fluctuated from 1993-94 to 2003-04 and increased in three of the last four years. Community college transfers to UC have declined from 1993-94 to 1998-99 and increased between 1999-00 & 2007-08.

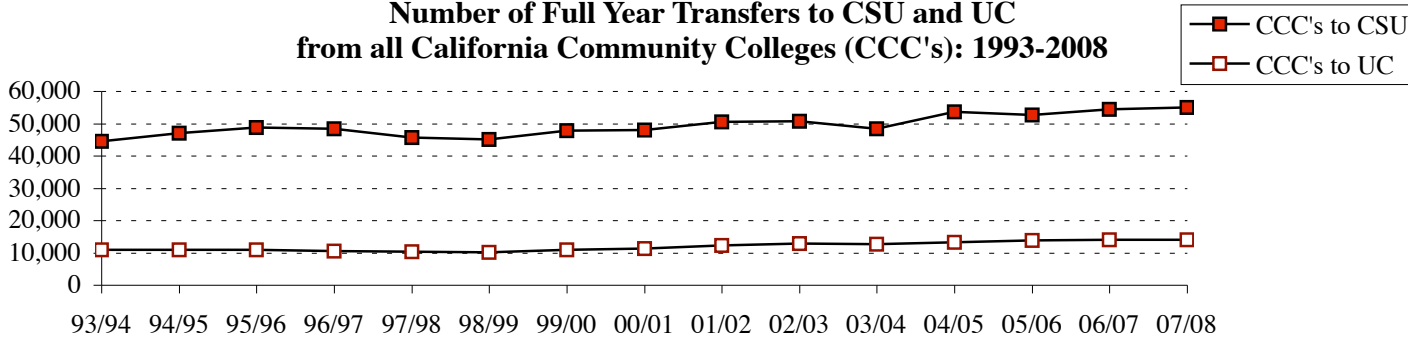
**Number of Full Year Transfers to CSU
from Chabot and Las Positas Colleges: 1993-2008**



**Number of Full Year Transfers to UC
from Chabot and Las Positas Colleges: 1993-2008**



**Number of Full Year Transfers to CSU and UC
from all California Community Colleges (CCC's): 1993-2008**

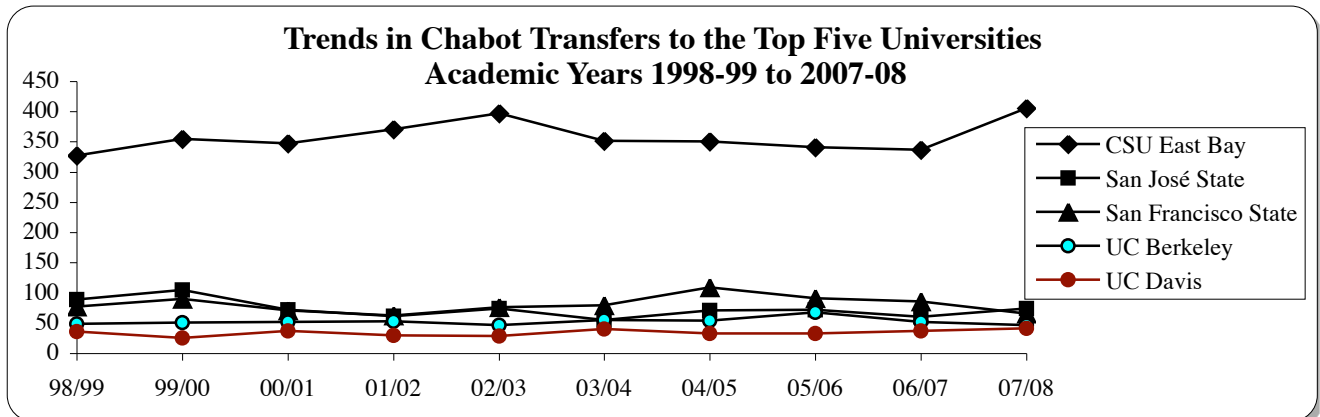


Top Public Universities of Chabot Transfers: Academic Years 1998-99 to 2007-08

The table and chart below display the top public universities Chabot students have transferred to during the last ten academic years. The top five public universities of Chabot transfers, in order from the highest to the lowest, have been CSU East Bay, San Francisco State, San José State, UC Berkeley, and UC Davis. The number of transfers to these universities has been fluctuating over the years. Most recently, CSU East Bay, San José State University, and UC Davis have experienced an increase in the number of Chabot transfers compared to the previous year. The number of Chabot transfers to San Francisco State and UC Berkeley decreased in 2007-2008.

	98/99	99/00	00/01	01/02	02/03	03/04	04/05	05/06	06/07	07/08	Total
CSU East Bay (formerly Hayward)	327	355	347	371	397	352	351	341	337	406	3,584
San Francisco State University	77	90	71	63	76	79	109	91	86	66	808
San José State University	89	105	72	61	74	55	71	72	60	74	733
UC Berkeley	49	51	52	53	47	55	54	68	52	47	528
UC Davis	36	25	37	30	29	40	33	33	37	41	341
CSU Chico	42	30	45	28	23	14	25	6	7	9	229
San Diego State University	23	19	27	20	20	13	15	6	6	5	154
CSU Sacramento	14	10	18	12	16	17	12	11	20	21	151
UCLA	8	17	14	21	10	19	24	10	13	14	150
UC Santa Cruz	9	3	7	2	14	12	18	11	9	8	93
UC San Diego	3	8	8	15	5	3	7	7	9	15	80
CSU Stanislaus	5	7	12	9	6	5	13	4	7	2	70
UC Santa Barbara	6	12	7	4	6	5	5	8	6	5	64
CA Polytechnic, San Luis Obispo	8	6	4	7	8	5	1	10	5	3	57
CSU Long Beach	3	6	4	8	6	6	3	6	2	5	49
CSU Fresno	7	3	4	8	4	3	6	5	4	1	45
Sonoma State University	6	6	6	6	6	1	6	3	0	5	45
Humboldt State University	2	6	3	3	6	1	6	6	3	5	41
UC Irvine	0	0	1	7	3	1	6	9	7	7	41
CSU Northridge	6	1	3	5	3	2	4	5	3	4	36
UC Riverside	0	4	1	0	6	5	2	6	2	3	29
CSU Los Angeles	1	0	2	2	3	2	5	3	4	3	25
CSU Monterey Bay	5	2	2	2	3	4	0	1	1	2	22
CSU Fullerton	1	4	0	2	3	0	4	1	1	4	20
CA Polytechnic, Pomona	3	1	2	0	1	2	2	2	1	3	17
CSU San Marcos	2	3	1	2	2	1	0	1	3	1	16
CSU San Bernardino	0	0	1	3	2	0	2	3	1	1	13
CSU Bakersfield	1	0	1	0	1	0	1	0	3	2	9
CSU Dominguez Hills	1	0	2	0	0	1	0	2	0	0	6
California Maritime Academy	0	0	0	0	0	0	0	1	2	2	5
UC Merced	0	0	0	0	0	0	0	1	0	0	1
CSU Channel Islands	0	0	0	0	0	1	0	0	0	0	1
Total	734	774	754	744	780	704	785	733	691	764	7,463

SOURCE: California Postsecondary Education Commission



Top Public Universities of Las Positas Transfers: Academic Years 1998-99 to 2007-08

The table and chart below display the top public universities that Las Positas students have transferred to during the last ten academic years. The top five public universities of Las Positas transfers have been CSU East Bay, San José State, UC Davis, San Francisco State, and CSU Sacramento. The number of transfers to these universities has been fluctuating over the years. In 2007-2008, San José State, UC Davis, and CSU Sacramento experienced an increase in the number of Las Positas transfers, while fewer Las Positas students transferred to CSU East Bay and San Francisco State.

	98/99	99/00	00/01	01/02	02/03	03/04	04/05	05/06	06/07	07/08	Total
CSU East Bay (formerly Hayward)	104	134	100	151	145	148	163	165	179	173	1,462
San José State University	20	24	16	25	30	30	38	52	42	66	343
UC Davis	23	19	29	23	38	37	43	39	40	47	338
San Francisco State University	1	7	15	23	37	35	33	39	51	45	286
CSU Sacramento	22	24	36	27	30	31	28	25	28	30	281
UC Berkeley	10	20	11	26	17	14	16	24	25	29	192
CA Polytechnic, San Luis Obispo	8	13	10	10	9	7	13	11	8	11	100
CSU Stanislaus	2	7	11	9	8	9	7	10	11	11	85
Sonoma State University	10	9	2	7	4	4	7	14	8	17	82
UC Santa Barbara	11	19	3	4	5	9	4	10	8	8	81
CSU Chico	0	0	0	0	0	0	0	28	28	16	72
UC Santa Cruz	3	2	5	7	7	5	13	11	10	7	70
UCLA	5	4	6	6	3	10	4	9	10	8	65
San Diego State University	0	0	3	4	1	0	1	13	28	9	59
CSU Long Beach	0	4	3	5	6	4	8	4	7	7	48
Humboldt State University	4	6	9	4	4	4	4	6	2	4	47
UC San Diego	4	0	1	8	5	2	5	5	7	6	43
CSU Monterey Bay	0	1	4	6	10	2	6	2	3	4	38
CSU Fresno	1	1	0	4	4	3	6	3	2	5	29
CSU Fullerton	1	1	1	2	3	2	6	2	4	4	26
UC Irvine	0	1	1	2	4	5	3	1	3	5	25
CA Polytechnic, Pomona	0	0	0	0	0	1	1	7	1	5	15
CSU Northridge	0	0	0	0	0	0	4	2	4	3	13
UC, Riverside	0	1	0	0	1	1	2	0	2	2	9
CSU Bakersfield	1	0	2	1	0	0	3	0	0	0	7
UC Merced	0	0	0	0	0	0	0	1	2	3	6
CSU Los Angeles	0	0	1	0	0	0	1	0	1	1	4
CSU San Bernardino	2	0	0	0	0	0	0	0	0	2	4
CSU Channel Islands	0	0	0	0	0	0	1	1	1	0	3
CA Maritime Academy	0	0	0	0	0	0	1	0	0	2	3
CSU Dominguez Hills	0	0	0	0	0	1	0	1	0	0	2
Total	232	297	269	354	371	364	421	485	515	530	

SOURCE: California Postsecondary Education Commission

**Trends in Las Positas Transfers to the Top Five Universities
Academic Years 1998-99 to 2007-08**

