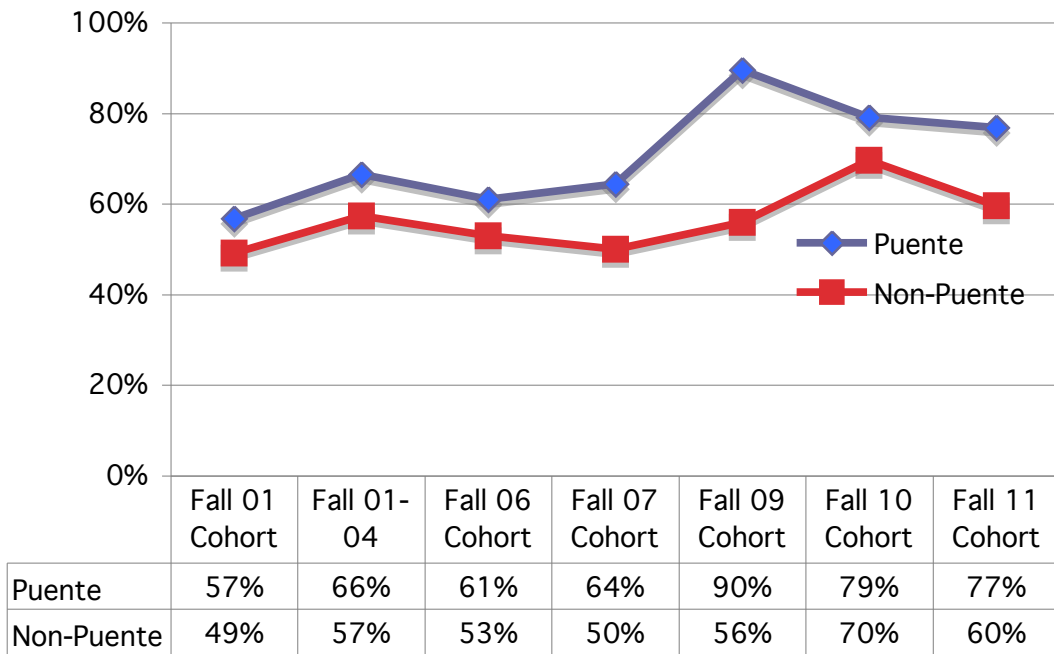
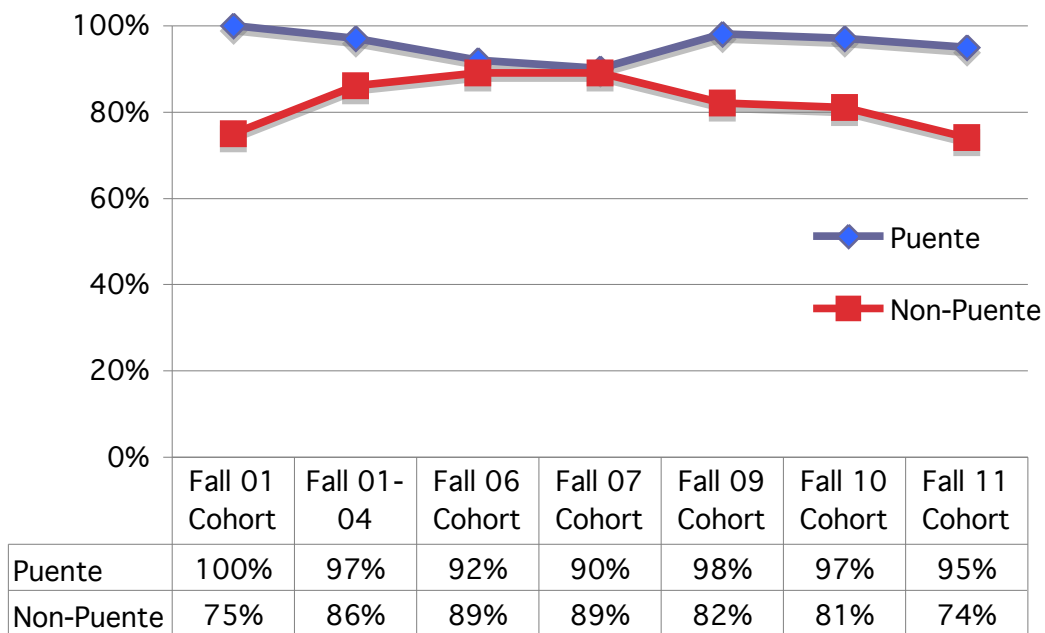


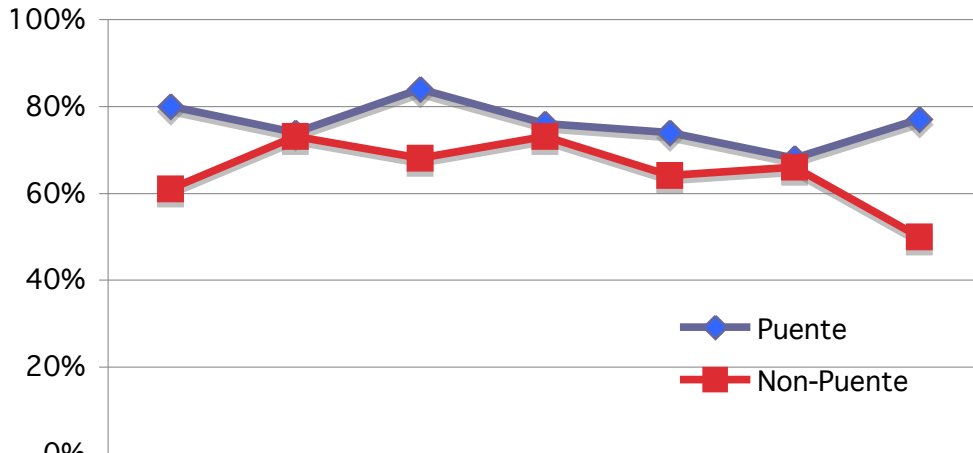
**Success rates in English 102  
Latinos in Puente and non-Puente sections**



**Pct of successful 102 students enrolled in any Eng 1A  
Latinos from Puente and non-Puente 102 sections**

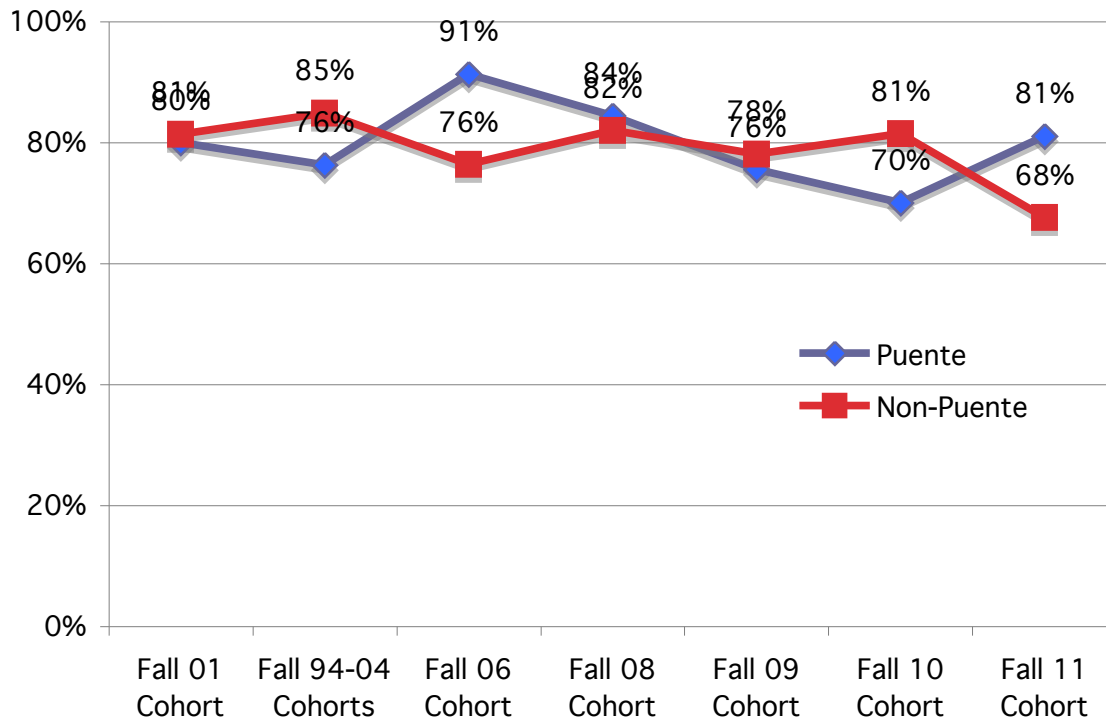


**Pct of successful 102 students succeeding in any Eng 1A  
Latinos from Puente and non-Puente 102 sections**

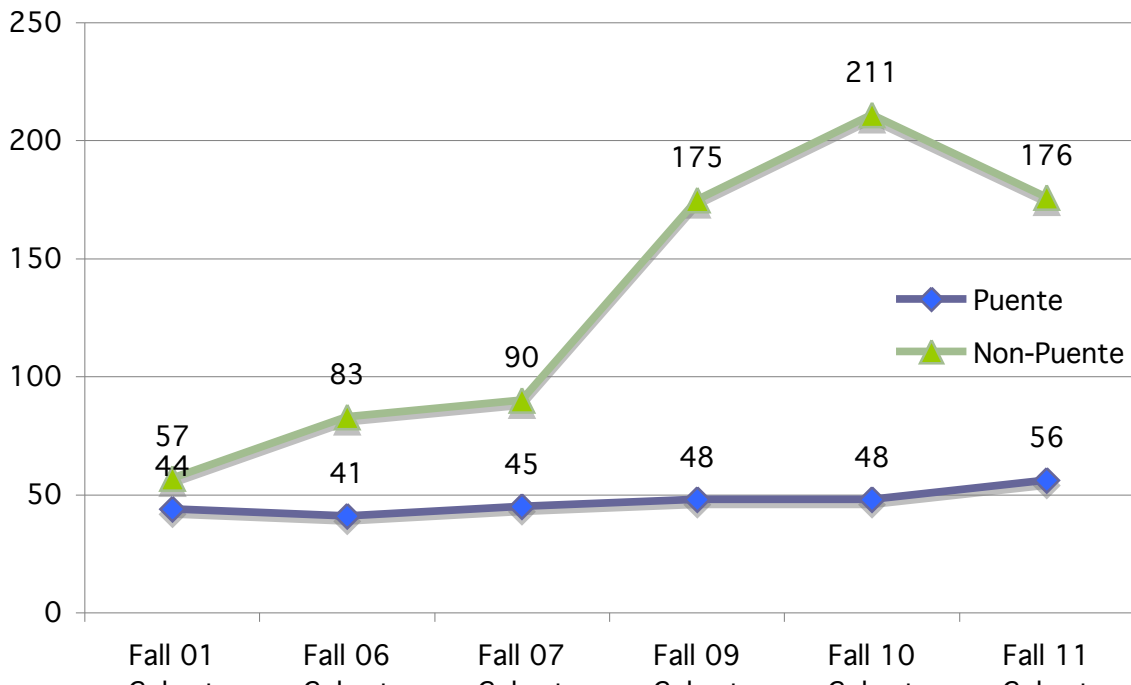


	Fall 01 Cohort	Fall 01-04 Cohorts	Fall 06 Cohort	Fall 07 Cohort	Fall 09 Cohort	Fall 10 Cohort	Fall 11 Cohort
Puente	80%	74%	84%	76%	74%	68%	77%
Non-Puente	61%	73%	68%	73%	64%	66%	50%

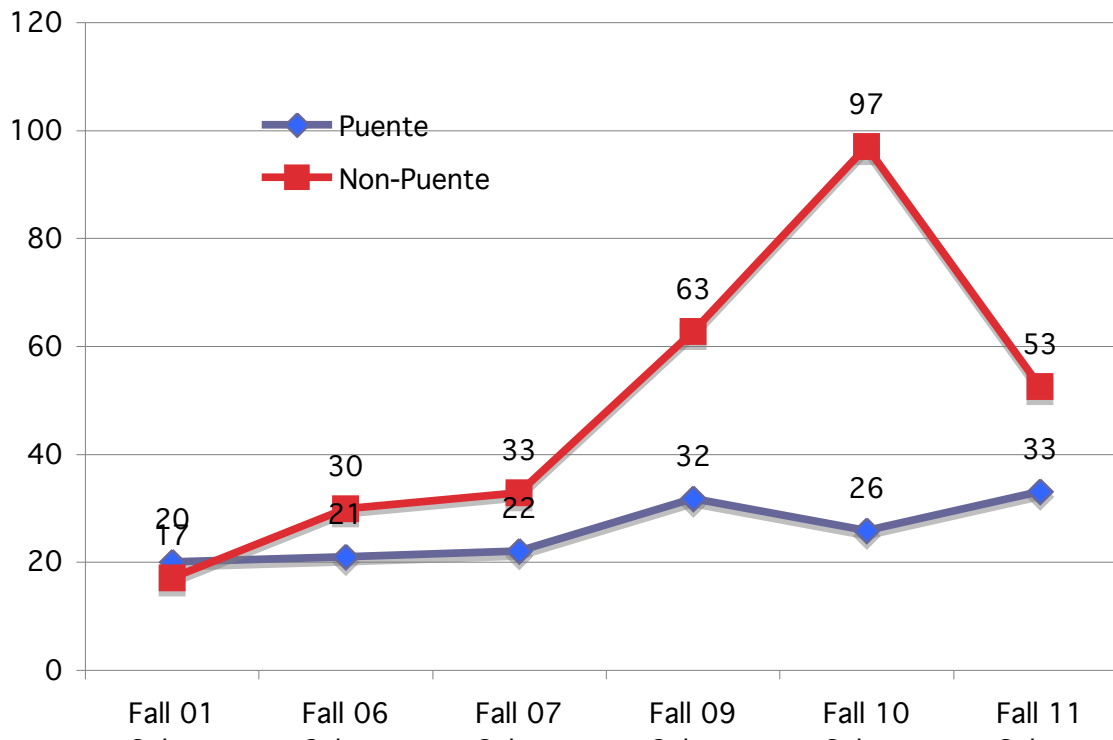
**Success rates in Eng 1A of Eng 102 students  
Latinos from Puente and non-Puente 102 sections**



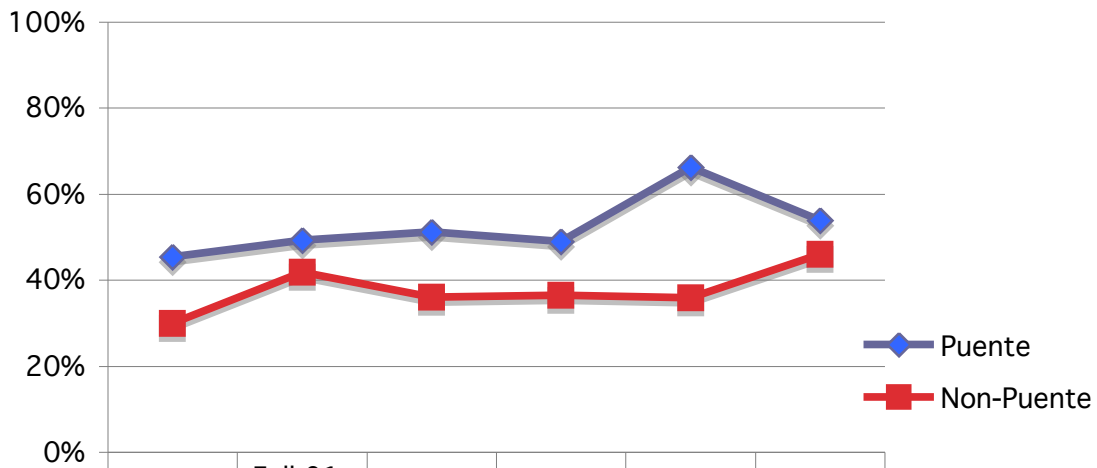
**Number of Latino students enrolled in Eng 102  
In Puente and non-Puente sections**



**Number of Latino 102 students who succeeded in 1A  
From Puente and non-Puente 102 sections**



**Pct of enrolled Eng 102 students succeeding in Eng 1A  
Latinos from Puente and non-Puente 102 sections**



	Fall 01 Cohort	Fall 01-04 Cohorts	Fall 06 Cohort	Fall 07 Cohort	Fall 09 Cohort	Fall 10 Cohort
Puente	45%	49%	51%	49%	66%	54%
Non-Puente	30%	42%	36%	37%	36%	46%