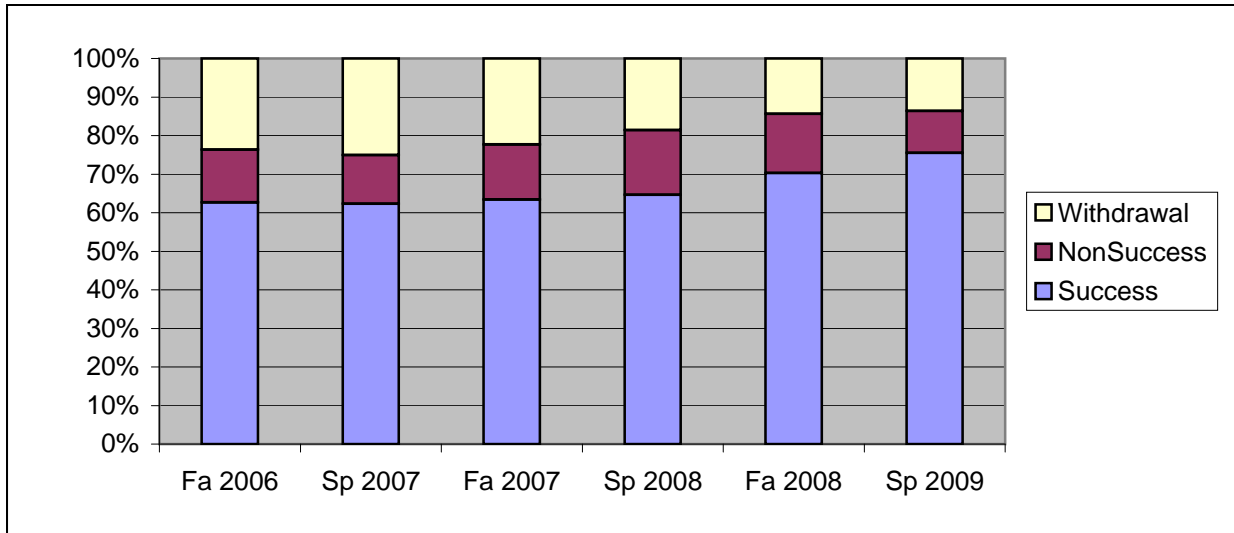
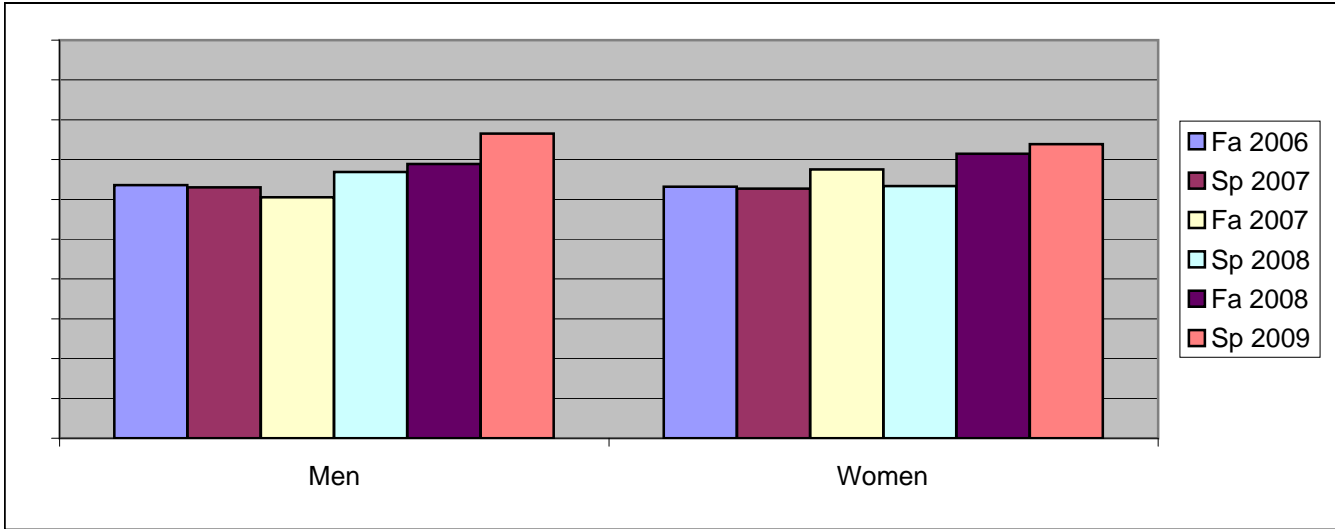


Chabot  
 Success, Non-Success, and Withdrawal Rates By Semester  
 Course: ANTH 1



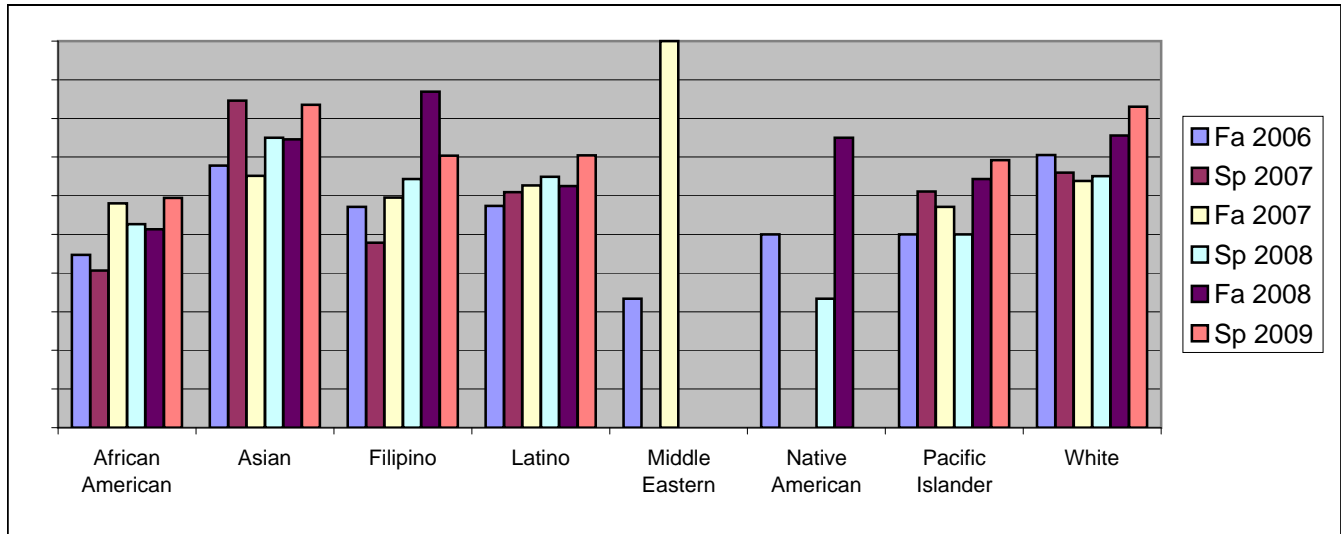
	Fa 2006	Sp 2007	Fa 2007	Sp 2008	Fa 2008	Sp 2009
Success	63%	62%	63%	65%	70%	76%
Non-Success	14%	13%	14%	17%	15%	11%
Withdrawal	24%	25%	22%	19%	14%	14%
Total Percent	100%	100%	100%	100%	100%	100%
Total Enrolled	<b>292</b>	<b>263</b>	<b>314</b>	<b>328</b>	<b>293</b>	<b>315</b>

Chabot  
Success Rates By Gender and Semester  
Course: ANTH 1



	Fa 2006	Sp 2007	Fa 2007	Sp 2008	Fa 2008	Sp 2009
<b>Men</b>						
Success	64%	63%	61%	67%	69%	77%
Non-Success	15%	15%	14%	15%	16%	10%
Withdrawal	21%	22%	26%	18%	16%	13%
Total Percent	100%	100%	100%	100%	100%	100%
Total Enrolled	<b>151</b>	<b>127</b>	<b>152</b>	<b>157</b>	<b>135</b>	<b>149</b>
<b>Women</b>						
Success	63%	63%	68%	63%	71%	74%
Non-Success	11%	10%	14%	18%	15%	12%
Withdrawal	26%	28%	18%	19%	14%	14%
Total Percent	100%	100%	100%	100%	100%	100%
Total Enrolled	<b>133</b>	<b>126</b>	<b>157</b>	<b>161</b>	<b>154</b>	<b>161</b>

Chabot  
Success Rates By Ethnicity and Semester  
Course: ANTH 1



	Fa 2006	Sp 2007	Fa 2007	Sp 2008	Fa 2008	Sp 2009
<b>African American</b>						
Success	45%	41%	58%	53%	51%	59%
Non-Success	24%	22%	10%	16%	24%	19%
Withdrawal	32%	38%	32%	32%	24%	22%
Total Percent	100%	100%	100%	100%	100%	100%
Total Enrolled	<b>38</b>	<b>32</b>	<b>50</b>	<b>38</b>	<b>37</b>	<b>37</b>
<b>Asian</b>						
Success	68%	85%	65%	75%	75%	84%
Non-Success	12%	8%	19%	9%	12%	7%
Withdrawal	20%	8%	16%	16%	13%	9%
Total Percent	100%	100%	100%	100%	100%	100%
Total Enrolled	<b>59</b>	<b>52</b>	<b>43</b>	<b>76</b>	<b>67</b>	<b>85</b>
<b>Filipino</b>						
Success	57%	48%	60%	64%	87%	70%
Non-Success	25%	30%	12%	21%	13%	15%
Withdrawal	18%	22%	29%	14%	0%	15%
Total Percent	100%	100%	100%	100%	100%	100%
Total Enrolled	<b>28</b>	<b>23</b>	<b>42</b>	<b>28</b>	<b>23</b>	<b>27</b>
<b>Latino</b>						
Success	57%	61%	63%	65%	63%	70%
Non-Success	16%	17%	20%	18%	22%	14%
Withdrawal	26%	22%	17%	18%	15%	15%
Total Percent	100%	100%	100%	100%	100%	100%
Total Enrolled	<b>61</b>	<b>64</b>	<b>75</b>	<b>74</b>	<b>72</b>	<b>71</b>
<b>Middle Eastern</b>						
Success	33%	0%	100%	0%	0%	0%
Non-Success	0%	0%	0%	0%	0%	0%
Withdrawal	67%	0%	0%	0%	0%	0%

Total Percent	100%	0%	100%	0%	0%	0%
Total Enrolled	<b>3</b>	<b>0</b>	<b>1</b>	<b>0</b>	<b>0</b>	<b>0</b>
<b>Native American</b>						
Success	50%	0%	0%	33%	75%	0%
Non-Success	0%	0%	0%	67%	25%	100%
Withdrawal	50%	100%	0%	0%	0%	0%
Total Percent	100%	100%	0%	100%	100%	100%
Total Enrolled	<b>2</b>	<b>1</b>	<b>0</b>	<b>3</b>	<b>4</b>	<b>1</b>
<b>Pacific Islander</b>						
Success	50%	61%	57%	50%	64%	69%
Non-Success	17%	11%	14%	38%	29%	15%
Withdrawal	33%	28%	29%	13%	7%	15%
Total Percent	100%	100%	100%	100%	100%	100%
Total Enrolled	<b>12</b>	<b>18</b>	<b>14</b>	<b>8</b>	<b>14</b>	<b>13</b>
<b>White</b>						
Success	70%	66%	64%	65%	76%	83%
Non-Success	7%	2%	10%	13%	5%	5%
Withdrawal	23%	32%	26%	22%	20%	12%
Total Percent	100%	100%	100%	100%	100%	100%
Total Enrolled	<b>61</b>	<b>50</b>	<b>58</b>	<b>63</b>	<b>41</b>	<b>59</b>