



Accountability Reporting for the Community Colleges 2007(ARCC)

Presentation to Chabot-Las Positas
Community College District Board of Trustees
February 5, 2008



Presenters

- Institutional Researchers

- Carolyn Arnold
- Amber Machamer

- Vice Presidents

- Laurel Jones
- Ron Taylor



Overview

- ARCC Background
- Systemwide Measures
- Methodology
- Colleges' Performance and Assessment
- Next Steps



ARCC Background

- Accountability Reporting for the Community Colleges (ARCC)
- Annual evaluation of community college performance
- Measuring statewide educational outcome priorities
- Replaced Partnership for Excellence with a new framework



ARCC Background

- Initiated by AB 1417
- Required the CCC System Office to develop an accountability report/model
- Report goes to the State Legislature



ARCC Background

○ Timeline

- January 2007 - draft released to colleges
- February 2007 - college self-assessment due
- March 2007 - final report issued
- By March 2008 - local Board of Trustee interaction with report



ARCC Background

- Report at two levels:
 - Systemwide (7 measures)
 - College (7 measures; we have data on 5)



ARCC

Highlights of System-wide Measures

Systemwide Measures

Annual Percentage of UC Graduates who Attended a Community College

UC Graduates

| | 2003-2004 | 2004-2005 | 2005-2006 |
|--------------|------------|------------|------------|
| Total UC | 38,579 | 40,862 | 41,640 |
| Attended CCC | 11,328 | 12,123 | 11,883 |
| Percent | 29% | 30% | 29% |

Systemwide Measures

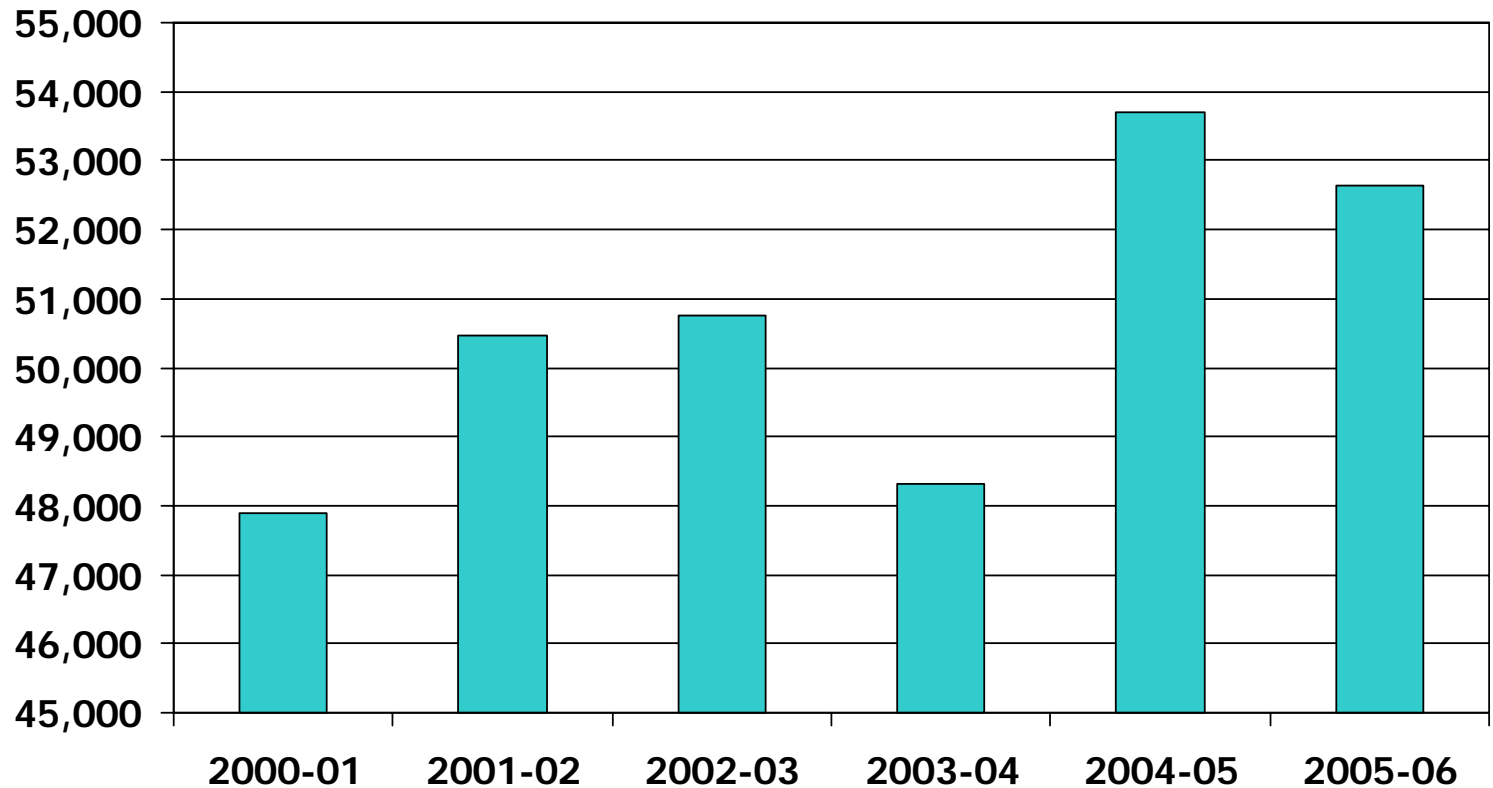
Annual Percentage of CSU Graduates who Attended a Community College

CSU Graduates

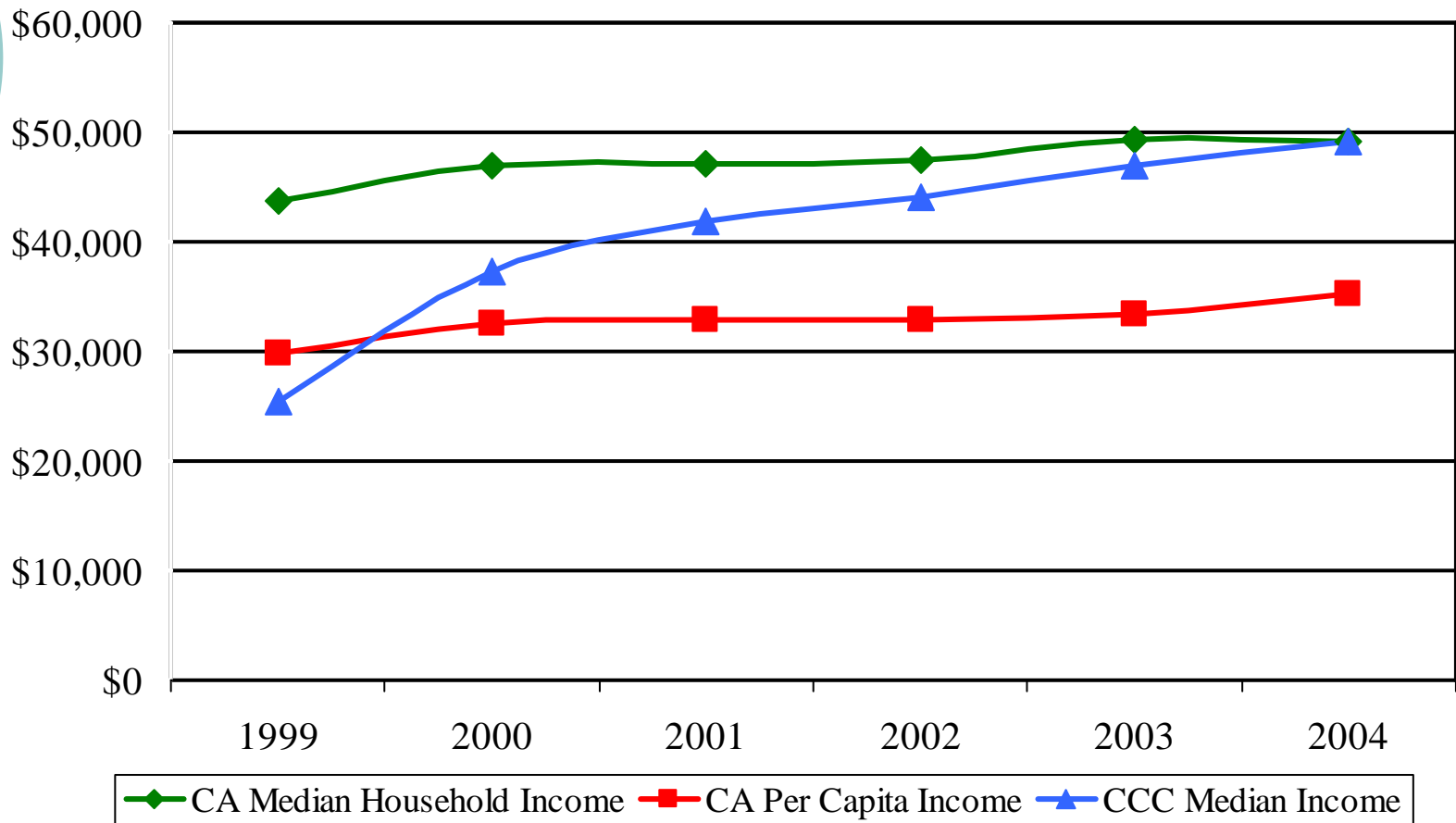
| | 2003-2004 | 2004-2005 | 2005-2006 |
|-----------------|------------|------------|------------|
| Total CSU Grads | 65,741 | 66,768 | 69,350 |
| Attended CCC | 37,329 | 37,316 | 38,365 |
| Percent | 57% | 56% | 55% |

Systemwide Measures

Annual CCC Transfers to CSU



Increase in Personal Income After Graduating from a CCC





ARCC

- Methodology of College Reports
 - College measures
 - Peer groups
 - Self-Assessment

College Measures

- Progress and Achievement: Degree/Certificate/Transfer
 - Progress and Achievement Rate
 - Percentage of students earning 30 or more units
 - Fall to Fall Persistence Rate for new students

 - Progress and Achievement: Workforce Development
 - Annual success rate for vocational courses

 - Pre-Collegiate Improvement
 - Annual success rate for basic skills courses
 - * Basic Skills Improvement Rate
 - * ESL Improvement Rate
- *No Data will be presented

Peer Groups

- For each college outcome, college peer groups were developed to provide context
- Peer groups were identified statistically based on similar college or local characteristics
- These characteristics influence the outcome and are outside the college's control
- Colleges are not ranked

Peer Groups

- *For example:*
 - Basic Skills Success rates were affected by:
 - Distance to nearest CSU
 - CSU SAT Math scores
 - Per capita income
- Different characteristics and peer groups for each of 5 outcomes
- Chabot and Las Positas were usually in different peer groups



College Self-Assessment

- Each college composed a 1-page analysis of their performance
- Analyzed status within peer groups
- Identified college activities and local factors that could impact the numbers



ARCC

College Measures
Chabot College

Chabot College

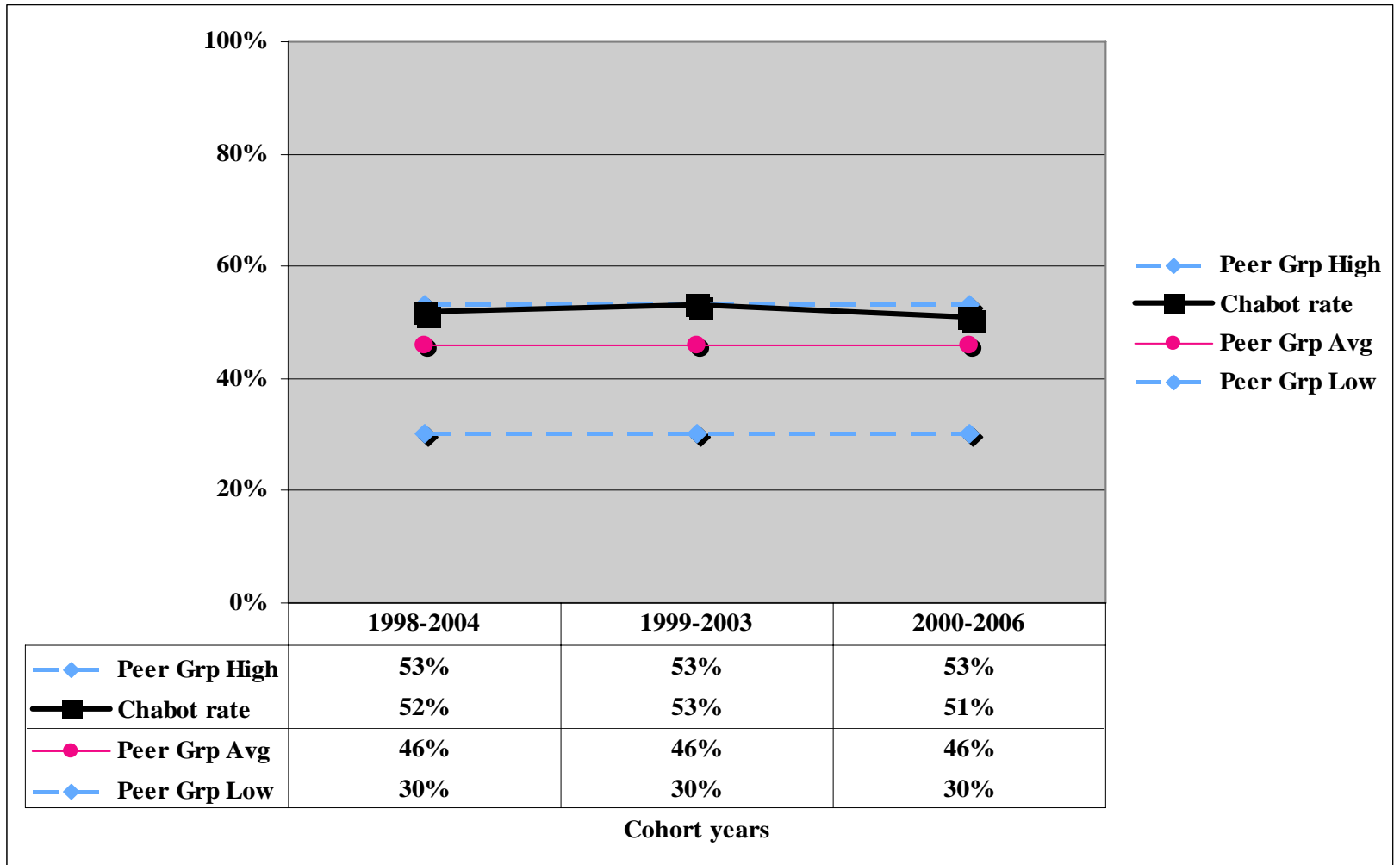
Student Progress and Achievement: Degree/Certificate/Transfer

Progress and Achievement Rate: Percent of first-time students who showed intent to complete and who achieved any of the following outcomes within six years: Transferred to a 4-year college; earned an AA/AS; earned a Certificate (18 units or more); achieved "Transfer Directed" status; achieved "Transfer Prepared" status.

| | 1998-99 to 2003-04 | 1999-00 to 2004-05 | 2000-01 to 2005-06 |
|---|-------------------------------|-------------------------------|-------------------------------|
| Student Progress and Achievement Rate | 52% | 54% | 51% |

Chabot Peer Groups

Student Progress and Achievement Rate



Chabot College

Student Progress and Achievement:

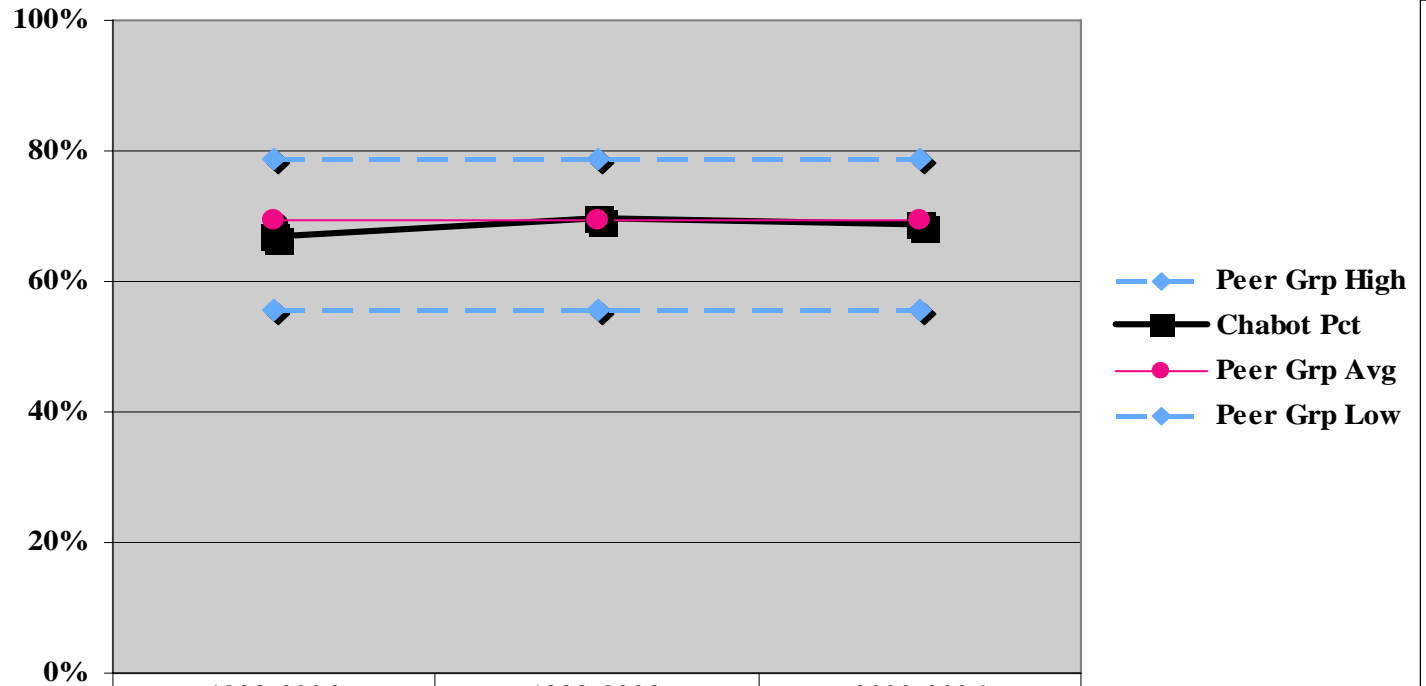
Degree/Certificate/Transfer

Percent of Students Who Earned at Least 30 Units: Percent of first-time students who showed intent to complete and who earned at least 30 units while in the CCC System.

| | 1998-99 to 2003-04 | 1999-00 to 2004-05 | 2000-01 to 2005-06 |
|---|-------------------------------|-------------------------------|-------------------------------|
| Percent of Students Who Earned at Least 30 Units | 67% | 70% | 69% |

Chabot Peer Groups

Percent of Student who Earn at Least 30 Units



| | 1998-2004 | 1999-2003 | 2000-2006 |
|---------------|-----------|-----------|-----------|
| Peer Grp High | 79% | 79% | 79% |
| Chabot Pct | 67% | 70% | 69% |
| Peer Grp Avg | 69% | 69% | 69% |
| Peer Grp Low | 56% | 56% | 56% |

Cohort years

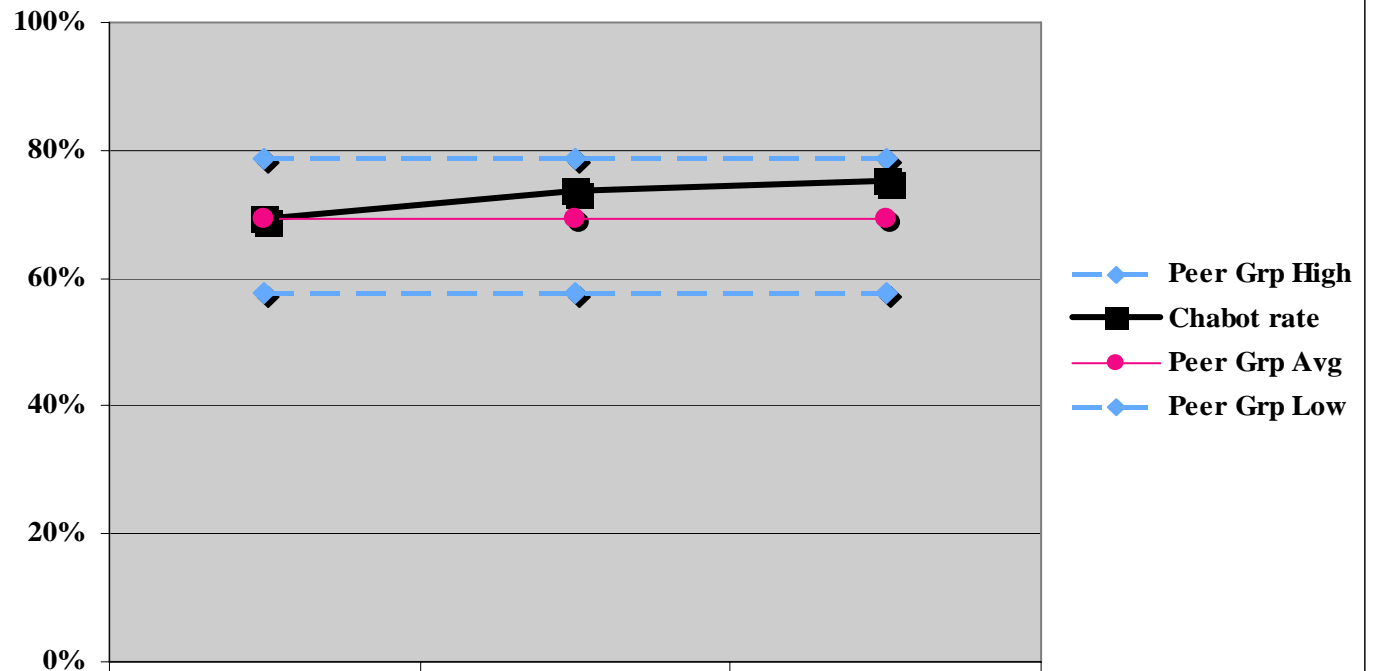
Chabot College

Student Progress and Achievement: Degree/Certificate/Transfer

Persistence Rate: Percent of first-time students with a minimum of six units earned in a Fall term and who returned and enrolled in the subsequent Fall term anywhere in the system.

| | Fall 2002 to Fall 2003 | Fall 2003 to Fall 2004 | Fall 2004 to Fall 2005 |
|---------------------|---------------------------------------|---------------------------------------|---------------------------------------|
| Student Persistence | 69% | 74% | 75% |

Chabot Peer Groups Persistence Rate



| | Fall 2002-Fall 2003 | Fall 2003-Fall 2004 | Fall 2004-Fall 2005 |
|---------------|---------------------|---------------------|---------------------|
| Peer Grp High | 79% | 79% | 79% |
| Chabot rate | 69% | 74% | 75% |
| Peer Grp Avg | 69% | 69% | 69% |
| Peer Grp Low | 58% | 58% | 58% |

Cohort years

Chabot College

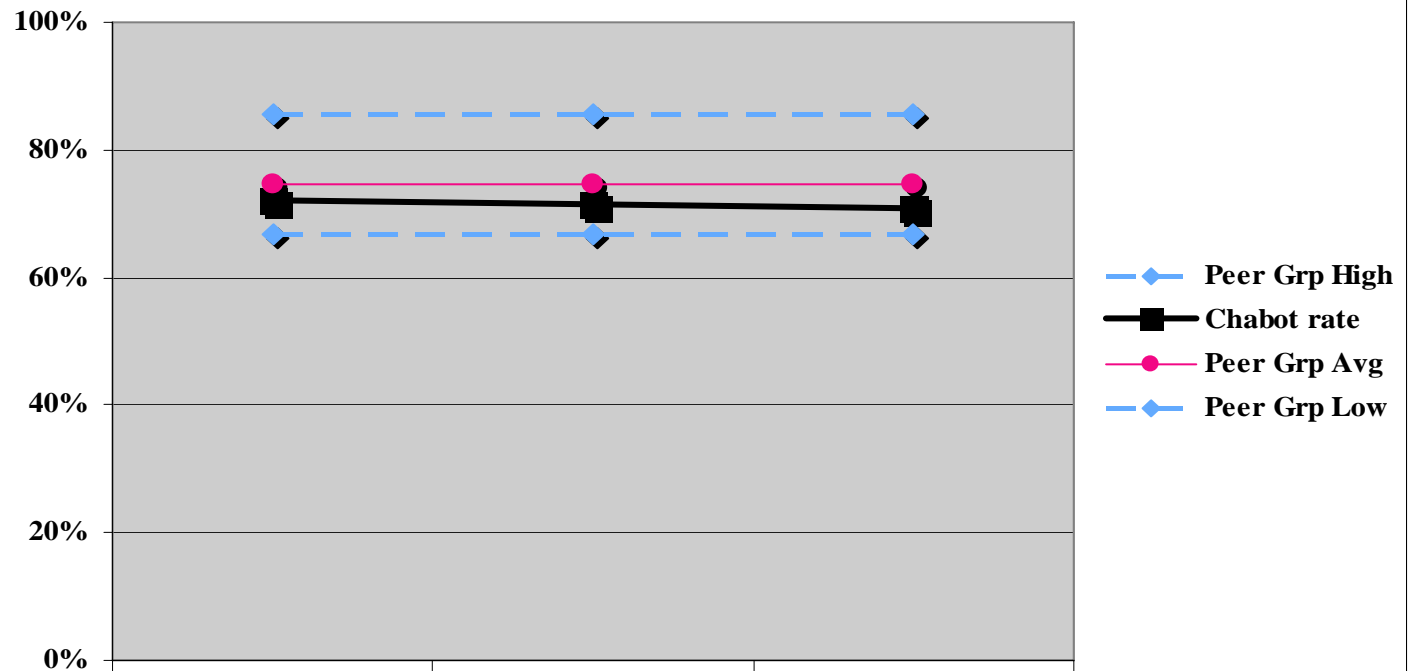
Student Progress and Achievement: Vocational/Occupational/Workforce

Annual Successful Course Completion Rate for Vocational Courses: Percent of students completing for- credit vocational courses with a grade of "C" or better.

| | 2003-04 | 2004-05 | 2005-06 |
|--|----------------|----------------|----------------|
| Annual Success Rate for Vocational Courses | 72% | 72% | 71% |

Chabot Peer Groups

Vocational Course Success Rate



| | 2003-2004 | 2004-2005 | 2005-2006 |
|---------------|-----------|-----------|-----------|
| Peer Grp High | 86% | 86% | 86% |
| Chabot rate | 72% | 72% | 71% |
| Peer Grp Avg | 75% | 75% | 75% |
| Peer Grp Low | 67% | 67% | 67% |

Cohort years

Chabot College

Pre-Collegiate Improvement:

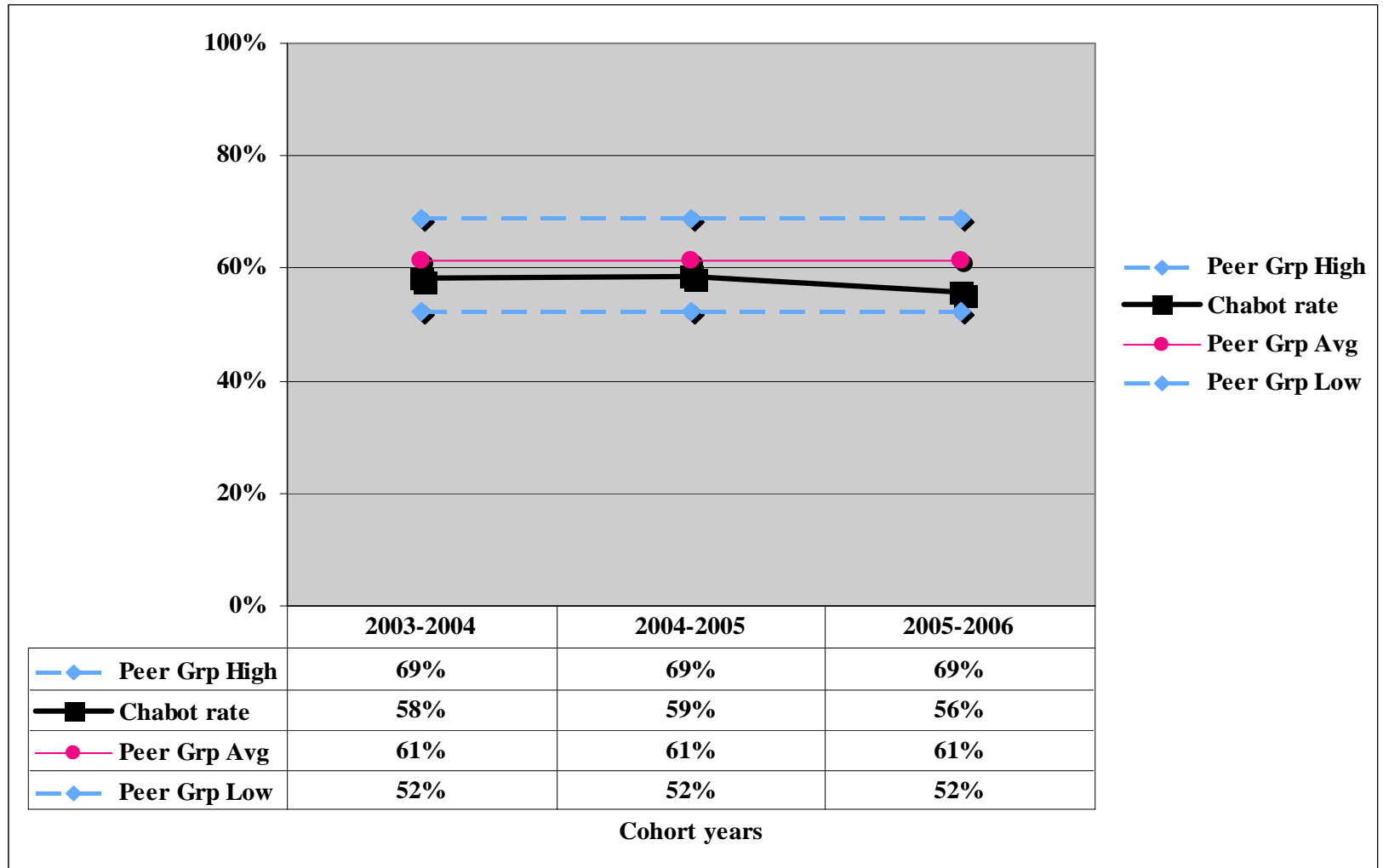
Course Success Rate for Basic Skills

Annual Successful Course Completion Rate for Basic Skill Courses: Percent of students completing for- credit basic skills courses with a grade of "C" or better.

| | 2003-04 | 2004-05 | 2005-06 |
|--|----------------|----------------|----------------|
| Annual Success Rate for Basic Skills Courses | 58% | 59% | 56% |

Chabot Peer Groups

Basic Skills Course Success Rate





ARCC

College Measures
Las Positas College

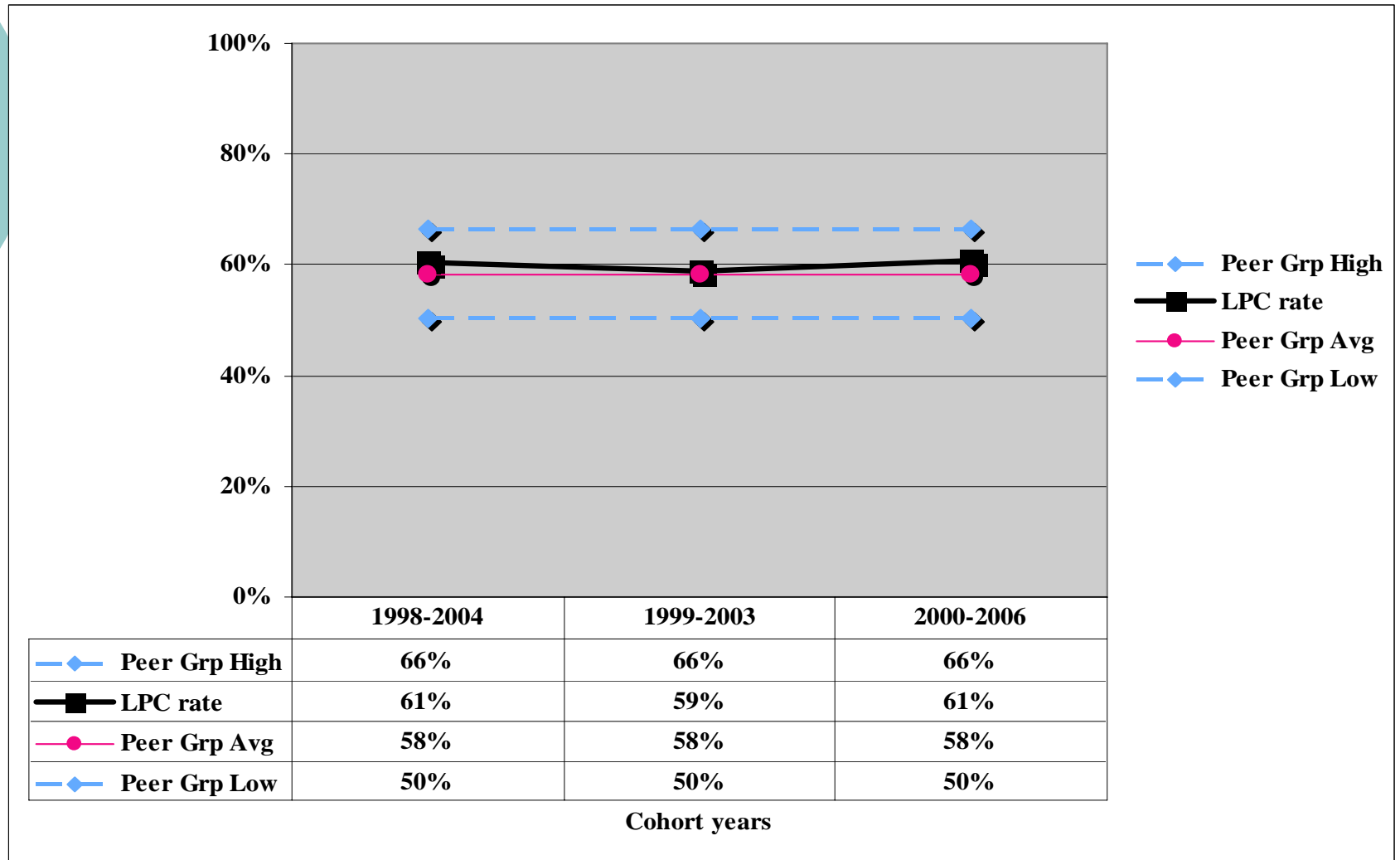
Las Positas College

Student Progress and Achievement: Degree/Certificate/Transfer

Progress and Achievement Rate: Percent of first-time students who showed intent to complete and who achieved any of the following outcomes within six years: Transferred to a 4-year college; or earned an AA/AS; or earned a Certificate (18 units or more); or achieved "Transfer Directed" status; or achieved "Transfer Prepared" status.

| | 1998-99 to 2003-04 | 1999-00 to 2004-05 | 2000-01 to 2005-06 |
|---|-------------------------------|-------------------------------|-------------------------------|
| Student Progress and Achievement Rate | 61% | 59% | 61% |

Las Positas College Peer Groups Student Progress and Achievement Rate



Las Positas College

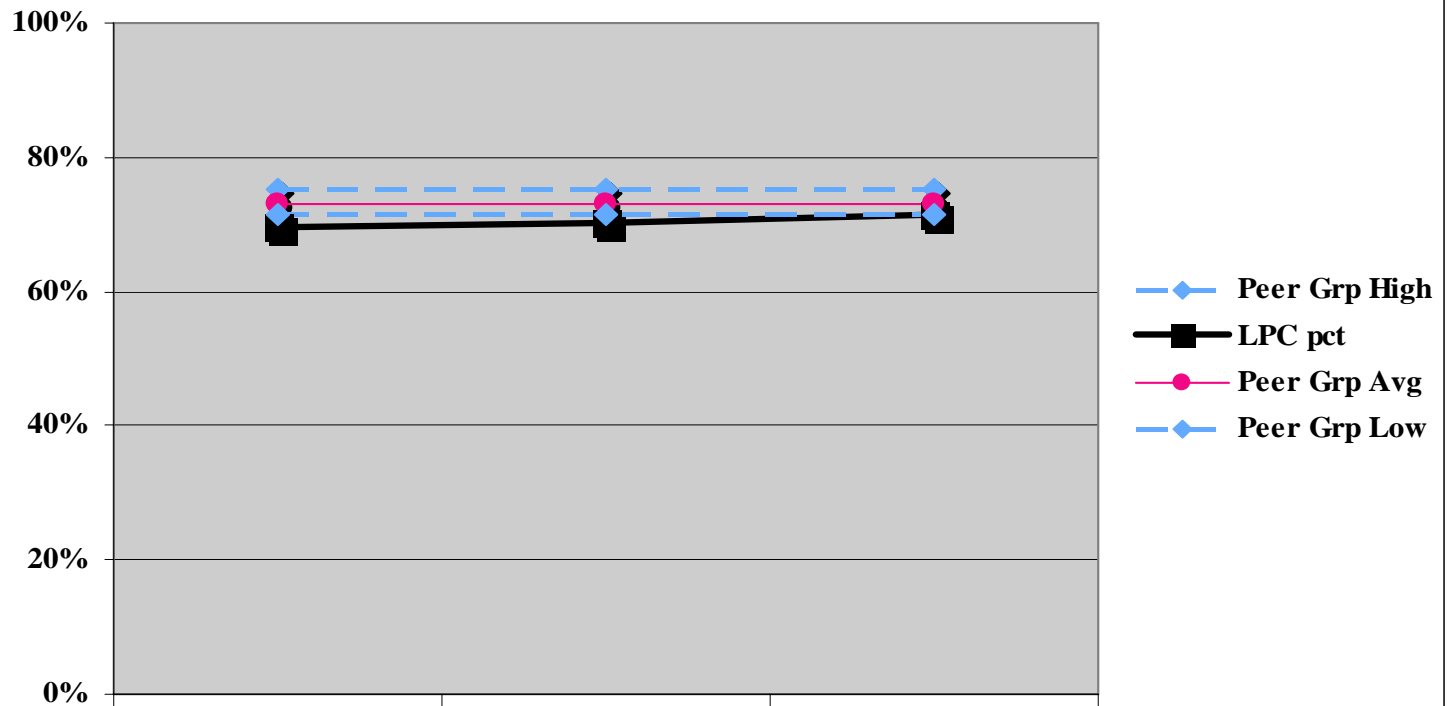
Student Progress and Achievement: Degree/Certificate/Transfer

Percent of Students Who Earned at Least 30 Units: Percent of first-time students who showed intent to complete and who earned at least 30 units while in the CCC System.

| | 1998-99 to 2003-04 | 1999-00 to 2004-05 | 2000-01 to 2005-06 |
|---|-------------------------------|-------------------------------|-------------------------------|
| Percent of Students Who Earned at Least 30 Units | 70% | 70% | 72% |

Las Positas College Peer Groups

Percent of Student who Earned at Least 30 Units



| | 1998-2004 | 1999-2003 | 2000-2006 |
|---------------|-----------|-----------|-----------|
| Peer Grp High | 75% | 75% | 75% |
| LPC pct | 70% | 70% | 72% |
| Peer Grp Avg | 73% | 73% | 73% |
| Peer Grp Low | 72% | 72% | 72% |

Cohort years

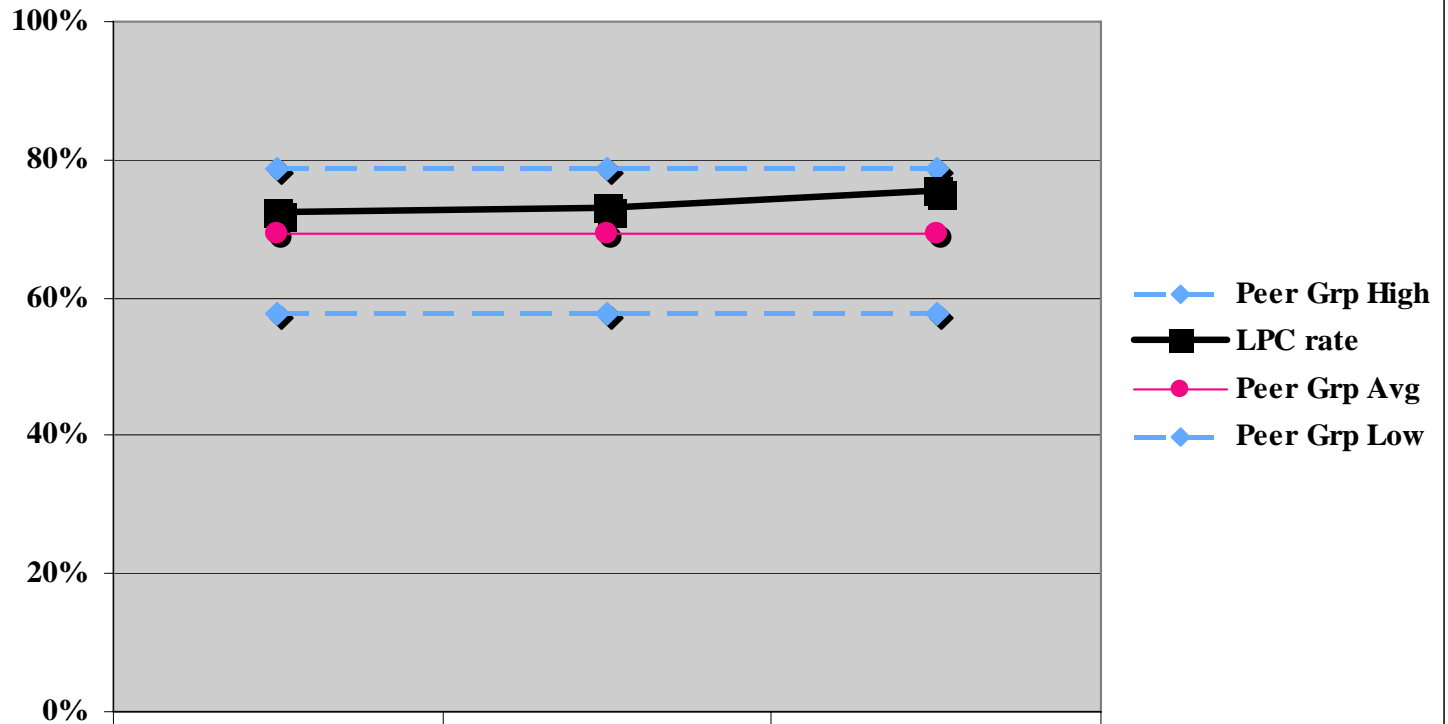
Las Positas College

Student Progress and Achievement: Degree/Certificate/Transfer

Persistence Rate: Percent of first-time students with a minimum of six units earned in a Fall term and who returned and enrolled in the subsequent Fall term anywhere in the system.

| | Fall 2002 to Fall 2003 | Fall 2003 to Fall 2004 | Fall 2004 to Fall 2005 |
|---------------------|---------------------------------------|---------------------------------------|---------------------------------------|
| Student Persistence | 73% | 73% | 75% |

Las Positas College Peer Groups Persistence Rate



| | | | |
|---------------|-----|-----|-----|
| Peer Grp High | 79% | 79% | 79% |
| LPC rate | 73% | 73% | 75% |
| Peer Grp Avg | 69% | 69% | 69% |
| Peer Grp Low | 58% | 58% | 58% |

Cohort years

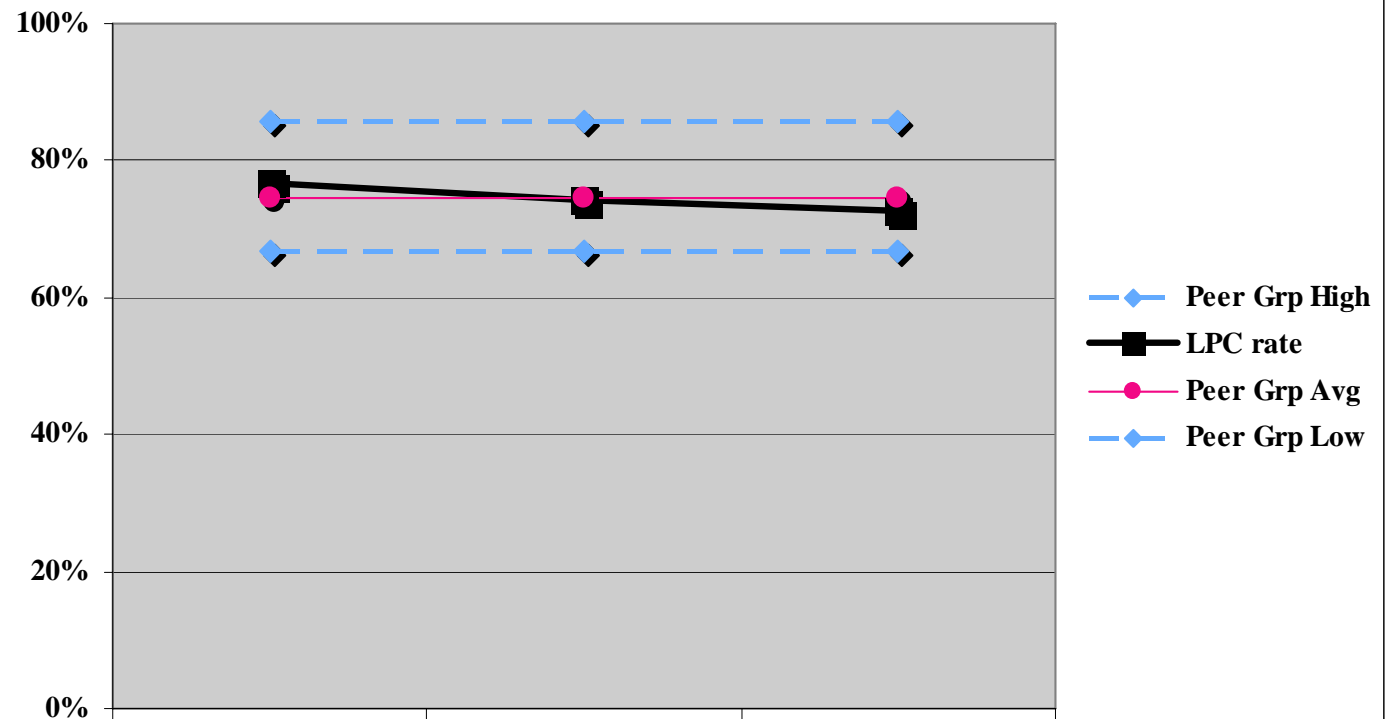
Las Positas College

Student Progress and Achievement: Vocational/Occupational/Workforce

Annual Successful Course Completion Rate for Vocational Courses: Percent of students completing for- credit vocational courses with a grade of "C" or better.

| | 2003-04 | 2004-05 | 2005-06 |
|--|----------------|----------------|----------------|
| Annual Success Rate for Vocational Courses | 77% | 74% | 73% |

Las Positas College Peer Groups Vocational Course Success Rate



| | 2003-2004 | 2004-2005 | 2005-2006 |
|---------------|-----------|-----------|-----------|
| Peer Grp High | 86% | 86% | 86% |
| LPC rate | 77% | 74% | 73% |
| Peer Grp Avg | 75% | 75% | 75% |
| Peer Grp Low | 67% | 67% | 67% |

Cohort years

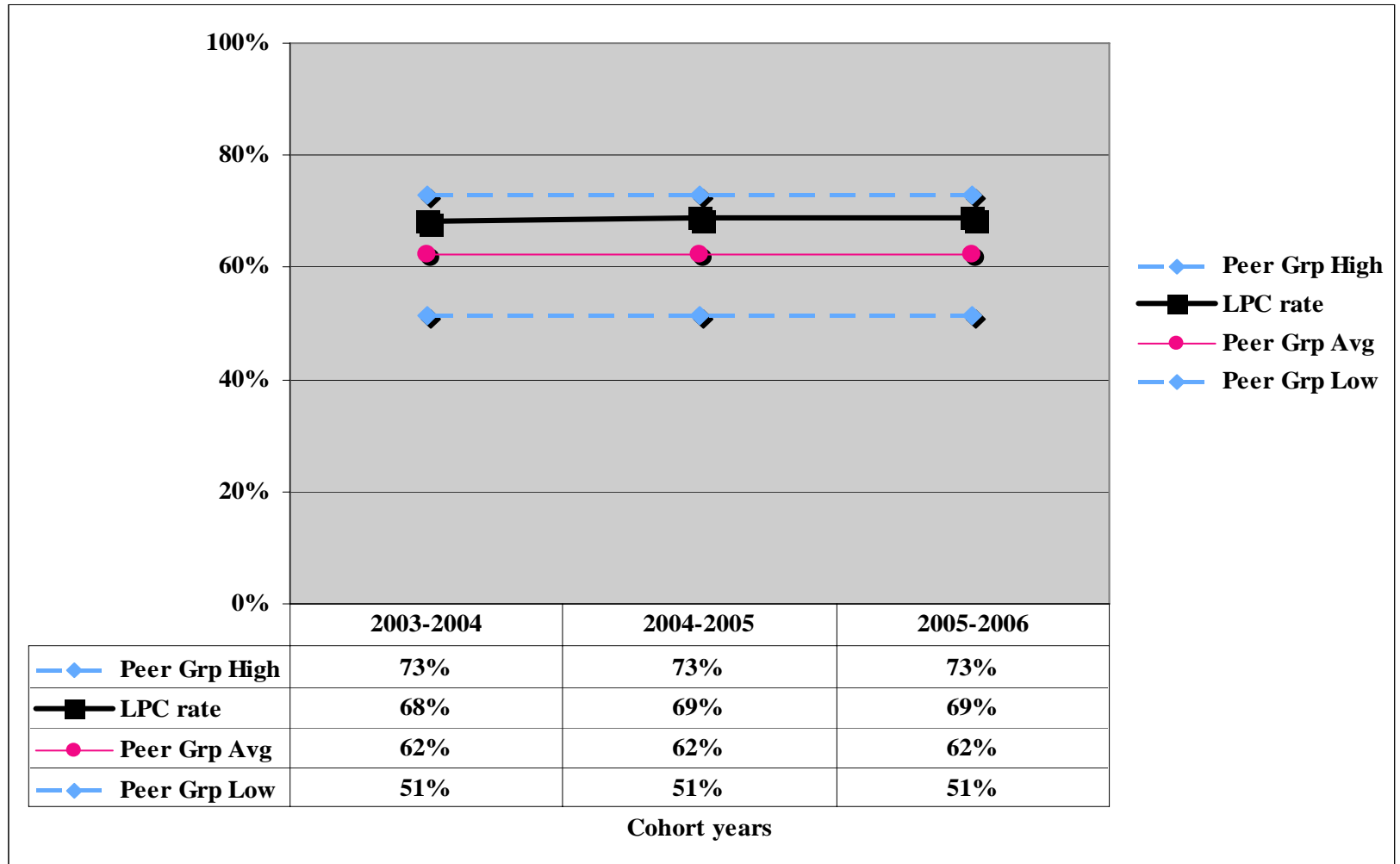
Las Positas College

Pre-Collegiate Improvement: Course Success Rate for Basic Skills

Annual Successful Course Completion Rate for Basic Skill Courses: Percent of students completing for- credit basic skills courses with a grade of "C" or better.

| | 2003-04 | 2004-05 | 2005-06 |
|--|---------|---------|---------|
| Annual Success Rate for Basic Skills Courses | 68% | 69% | 69% |

Las Positas College Peer Groups Basic Skills Course Success Rate



What's Next?

- Review of data and possible application to current program analysis, process analysis and master planning.
- Review and analysis of continuing ARCC data with continued communication of data out to faculty and program/faculty leadership

What's Next (continued)?

- Continued review of peer group analysis with possible communication on best practices programs within the ARCC College Measures
- Continued communication with the state and federal representatives highly connected to measures that affect College Measures (Chancellor's Office, VTEA, Perkins, etc.) to ensure budget and policy that allows for improvement and sustainability of College Measures Progress



ARCC

QUESTIONS?