

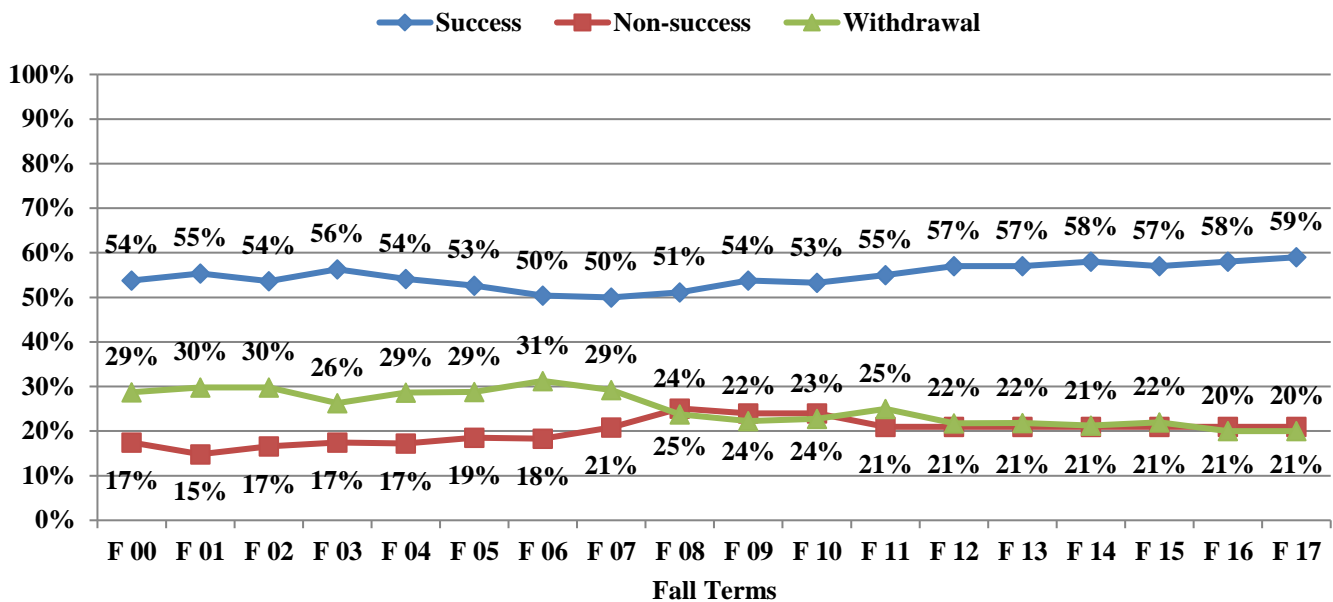
Chabot College Course success and withdrawal rates, by courses and students Fall 2000 to Fall 2017 African-Americans

Chabot African American students' success rates have remained stable at 57-59 percent in the past eight years, rising from an average of 50-55 percent in early 2000's. Withdrawal rates dropped from 29-30 percent in early 2000's to 20 percent in recent years. Non-success rates (D, F, No Credit, No Pass, or Incomplete) have gone up slightly from an average of 17 percent during the early 2000's to 20 percent in Fall 2017. The percentage of students who withdrew from all their courses fell from 21 percent in the early 2000's to 14 percent in recent years. Compared to all students at Chabot, African American students had lower success rates and higher withdrawal rates.

Quarter/ semester	By course enrollments				By students	
	Number of course enrollments at Census	Percentage of course enrollments			Number of students enrolled	Percentage of students Withdrew from all courses
		Success (A,B,C, CR, P)	Non-success (D, F, NC, NP, I)	Withdrawal (W)		
Fall 2000	5,218	54%	17%	29%	1,950	18%
Fall 2001	5,248	55%	15%	30%	1,974	21%
Fall 2002	6,058	54%	17%	30%	2,194	19%
Fall 2003	5,493	56%	17%	26%	1,989	20%
Fall 2004	5,892	54%	17%	29%	2,121	21%
Fall 2005	5,899	53%	19%	29%	2,028	19%
Fall 2006	5,342	50%	18%	31%	1,935	21%
Fall 2007	5,943	50%	21%	29%	2,093	18%
Fall 2008	6,534	51%	25%	24%	2,290	16%
Fall 2009	7,435	54%	24%	22%	2,510	15%
Fall 2010	7,281	53%	24%	23%	2,417	14%
Fall 2011	6,025	55%	21%	25%	2,063	14%
Fall 2012	5,106	57%	21%	22%	1,787	14%
Fall 2013	5,154	57%	21%	22%	1,769	13%
Fall 2014	4,506	58%	21%	21%	1,627	13%
Fall 2015	4,365	57%	21%	22%	1,671	16%
Fall 2016	4,368	58%	21%	20%	1,691	13%
Fall 2017*	5,870	59%	21%	20%	2,148	14%

NOTE: *Starting in Fall 2017, all African-American students are counted regardless of race or ethnicity.

Chabot College Percentage of Success, Non-Success, and Withdrawal by African-Americans Fall 2000 to Fall 2017



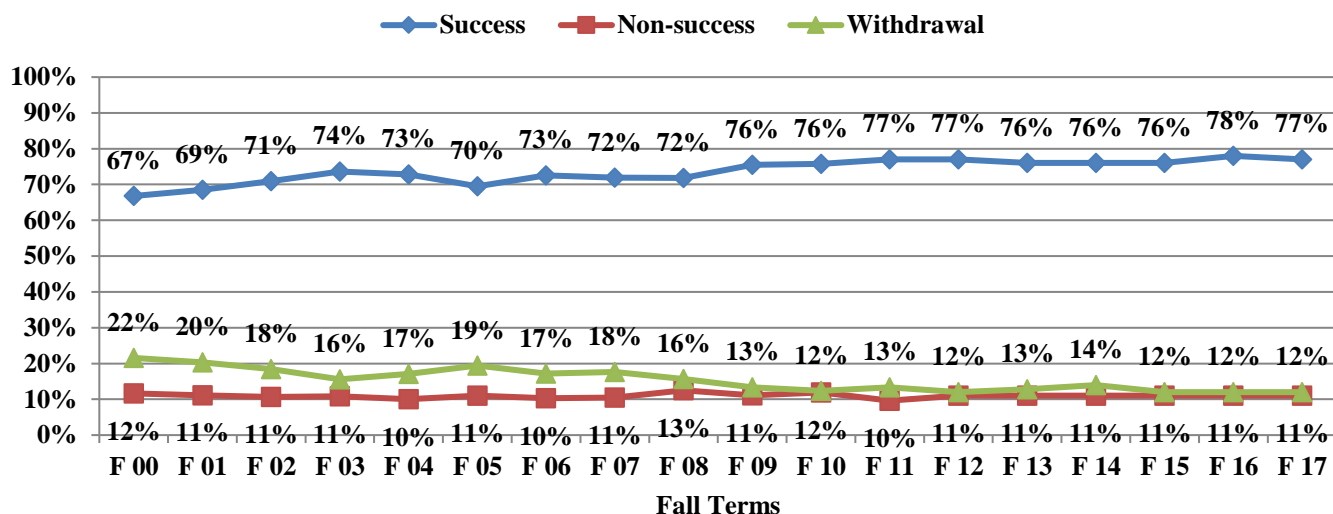
Chabot College Course success and withdrawal rates, by courses and students Fall 2000 to Fall 2017 Asians

Chabot Asian American students' success rates have remained stable at 76 or 78 percent in the past eight years, rising from an average of 67-70 percent in early 2000's. Withdrawal rates dropped from 20-22 percent in early 2000's to 12 percent in recent years. Non-success rates (D, F, No Credit, No Pass, or Incomplete) have dropped slightly from an average of 12 percent during the early 2000's to 11 percent in Fall 2017. The percentage of students who withdrew from all their courses fell from 14 percent in the early 2000's to 8 or 9 percent in recent years. Compared to all students at Chabot, Asian American students had higher success rates and lower withdrawal rates.

Quarter/ semester	By course enrollments				By students	
	Number of course enrollments at Census	Percentage of course enrollments			Number of students enrolled	Percentage of students Withdrew from all courses
		Success (A,B,C, CR, P)	Non-success (D, F, NC, NP, I)	Withdrawal (W)		
Fall 2000	6,675	67%	12%	22%	2,604	14%
Fall 2001	7,238	69%	11%	20%	2,851	14%
Fall 2002	7,894	71%	11%	18%	3,033	14%
Fall 2003	7,531	74%	11%	16%	2,753	12%
Fall 2004	7,456	73%	10%	17%	2,740	13%
Fall 2005	6,709	70%	11%	19%	2,535	12%
Fall 2006	6,579	73%	10%	17%	2,392	10%
Fall 2007	6,548	72%	11%	18%	2,455	11%
Fall 2008	6,726	72%	13%	16%	2,422	9%
Fall 2009	7,123	76%	11%	13%	2,645	10%
Fall 2010	7,326	76%	12%	12%	2,575	8%
Fall 2011	6,783	77%	10%	13%	2,324	8%
Fall 2012	6,390	77%	11%	12%	2,205	7%
Fall 2013	6,015	76%	11%	13%	2,142	7%
Fall 2014	5,861	76%	11%	14%	2,074	9%
Fall 2015	5,957	76%	11%	12%	2,017	8%
Fall 2016	6,164	78%	11%	12%	2,225	8%
Fall 2017*	7,496	77%	11%	12%	2,750	9%

NOTE: *Starting in Fall 2017, all Asian students are counted regardless of race or ethnicity.

Chabot College Percentage of Success, Non-Success, and Withdrawal by Asians Fall 2000 to Fall 2017



Chabot College

Course success and withdrawal rates, by courses and students

Fall 2000 to Fall 2017

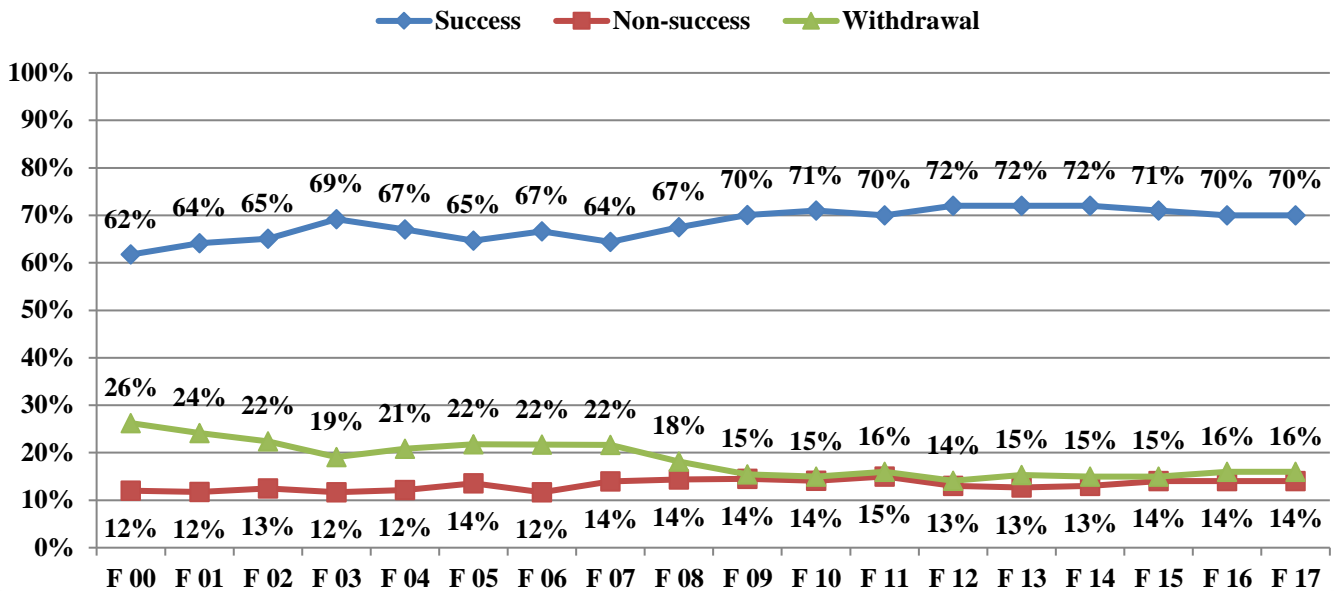
Filipinos

Chabot Filipino students' success rates have remained stable at 70-72 percent in the past eight years, rising from an average of 62-65 percent in early 2000's. Withdrawal rates dropped from 24-26 percent in early 2000's to 16 percent in recent years. Non-success rates (D, F, No Credit, No Pass, or Incomplete) have gone up slightly from an average of 12 percent during the early 2000's to 14 percent in Fall 2017. The percentage of students who withdrew from all their courses fell from 17 percent in the early 2000's to 8 or 11 percent in recent years. Compared to all students at Chabot, Filipino students had slightly higher success rates and lower non-success rates.

Quarter/ semester	By course enrollments				By students	
	Number of course enrollments at Census	Percentage of course enrollments			Number of students enrolled	Percentage of students
		Success (A,B,C, CR, P)	Non-success (D, F, NC, NP, I)	Withdrawal (W)		Withdrew from all courses
Fall 2000	3,301	62%	12%	26%	1,273	17%
Fall 2001	3,548	64%	12%	24%	1,381	15%
Fall 2002	4,078	65%	13%	22%	1,527	15%
Fall 2003	3,945	69%	12%	19%	1,455	12%
Fall 2004	3,936	67%	12%	21%	1,481	14%
Fall 2005	3,829	65%	14%	22%	1,377	13%
Fall 2006	3,787	67%	12%	22%	1,344	13%
Fall 2007	3,943	64%	14%	22%	1,460	12%
Fall 2008	3,902	67%	14%	18%	1,399	10%
Fall 2009	3,959	70%	14%	15%	1,402	10%
Fall 2010	4,001	71%	14%	15%	1,360	8%
Fall 2011	3,262	70%	15%	16%	1,119	9%
Fall 2012	3,063	72%	13%	14%	1,024	8%
Fall 2013	3,098	72%	13%	15%	1,058	8%
Fall 2014	3,017	72%	13%	15%	1,057	9%
Fall 2015	3,121	71%	14%	15%	1,123	9%
Fall 2016	3,043	70%	14%	16%	1,162	10%
Fall 2017*	4,556	70%	14%	16%	1,639	11%

NOTE: *Starting in Fall 2017, all Filipino students are counted regardless of race or ethnicity.

Chabot College
Percentage of Success, Non-Success, and Withdrawal by Filipinos
Fall 2000 to Fall 2017



Chabot College

Course success and withdrawal rates, by courses and students

Fall 2000 to Fall 2017

Latinx

Chabot Latinx students' success rates have remained stable at 65-67 percent in the past eight years, rising from an average of 60-62 percent in early 2000's. Withdrawal rates dropped from 24-26 percent in early 2000's to 16 percent in recent years. Non-success rates (D, F, No Credit, No Pass, or Incomplete) have gone up slightly from an average of 14 percent during the early 2000's to 18 percent in Fall 2017. The percentage of students who withdrew from all their courses fell from 17 percent in the early 2000's to 10 or 11 percent in recent years. Compared to all students at Chabot, Latinx students had slightly lower success rates and higher non-success rates.

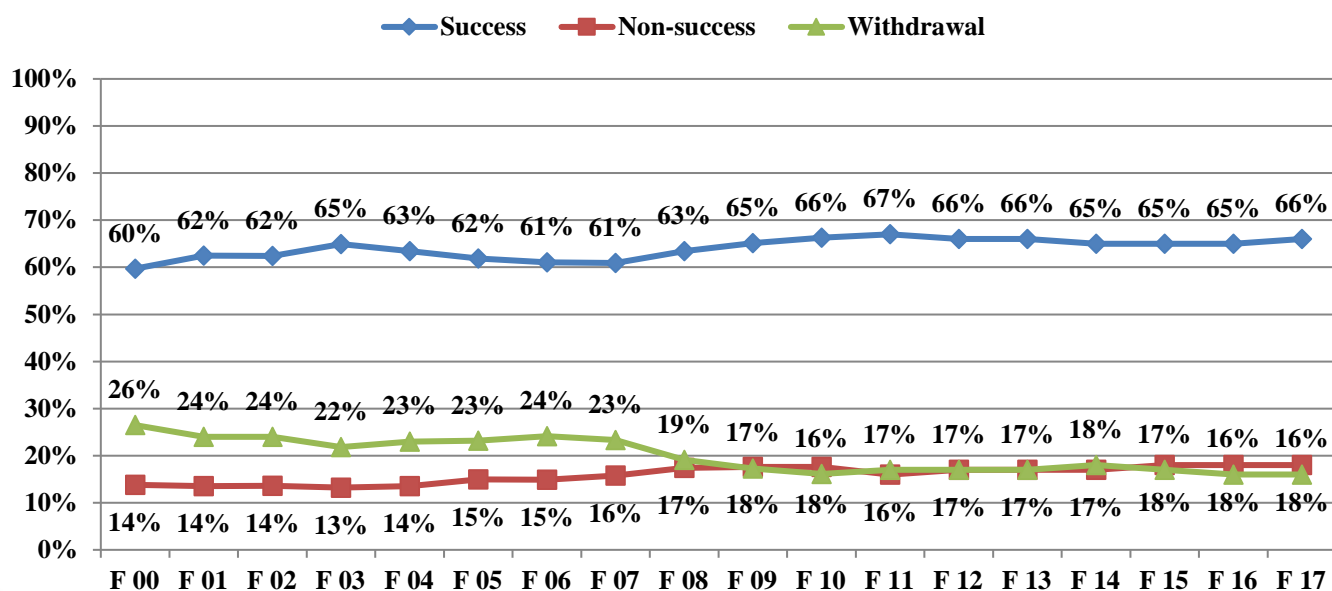
Quarter/ semester	By course enrollments				By students	
	Number of course enrollments at Census	Percentage of course enrollments			Number of students enrolled	Percentage of students Withdrawn from all courses
		Success (A,B,C, CR, P)	Non-success (D, F, NC, NP, I)	Withdrawal (W)		
Fall 2000	6,860	60%	14%	26%	2,738	17%
Fall 2001	7,282	62%	14%	24%	2,917	15%
Fall 2002	8,431	62%	14%	24%	3,311	15%
Fall 2003	8,583	65%	13%	22%	3,304	12%
Fall 2004	8,576	63%	14%	23%	3,303	14%
Fall 2005	8,460	62%	15%	23%	3,259	13%
Fall 2006	8,284	61%	15%	24%	3,105	13%
Fall 2007	8,793	61%	16%	23%	3,429	12%
Fall 2008	9,624	63%	17%	19%	3,938	10%
Fall 2009	11,427	65%	18%	17%	4,294	10%
Fall 2010	12,280	66%	18%	16%	4,356	8%
Fall 2011	12,547	67%	16%	17%	4,616	11%
Fall 2012	12,427	66%	17%	17%	4,632	10%
Fall 2013	12,879	66%	17%	17%	4,810	11%
Fall 2014	12,977	65%	17%	18%	4,906	10%
Fall 2015	14,015	65%	18%	17%	5,373	11%
Fall 2016	14,694	65%	18%	16%	5,387	10%
Fall 2017*	14,712	66%	18%	16%	5,760	11%

NOTE: *Starting in Fall 2011, all Latinx are counted regardless of race.

Chabot College

Percentage of Success, Non-Success, and Withdrawal by Latinx

Fall 2000 to Fall 2017



Chabot College

Course success and withdrawal rates, by courses and students

Fall 2000 to Fall 2017

Pacific Islanders

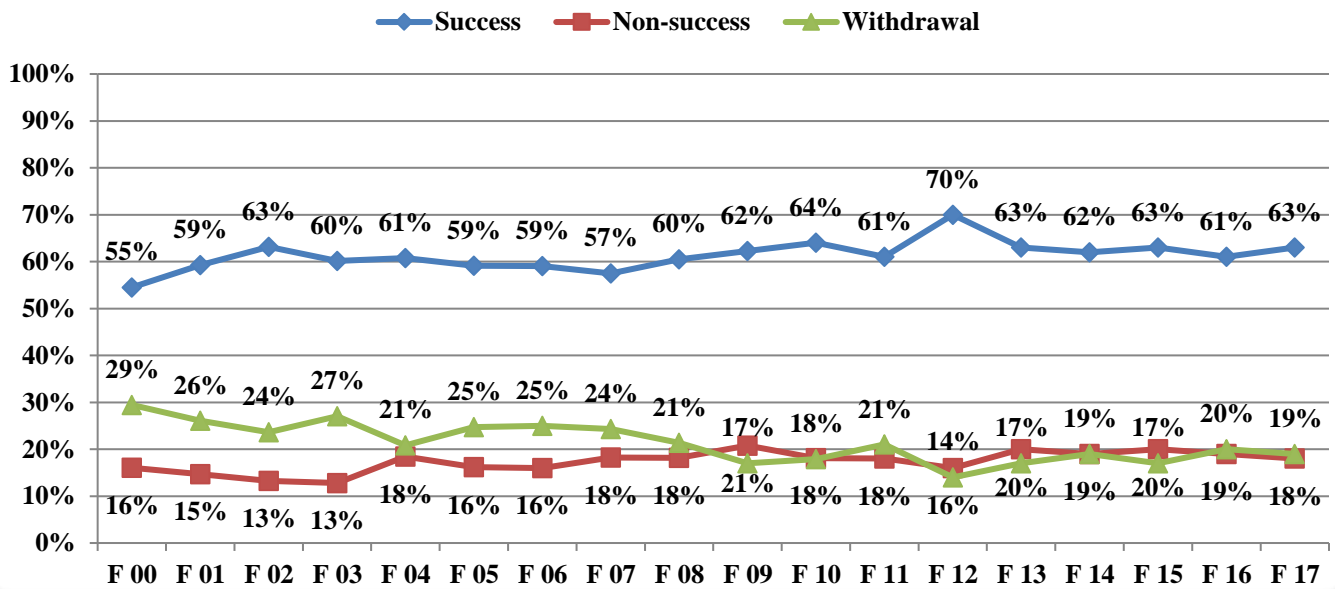
Chabot Pacific Islander students' success rates have remained stable at 61-63 percent in the past five years, rising from an average of 55-59 percent in early 2000's. Withdrawal rates dropped from 26-29 percent in early 2000's to 17-19 percent in recent years. Non-success rates (D, F, No Credit, No Pass, or Incomplete) have gone up slightly from an average of 16 percent during the early 2000's to 18 percent in Fall 2017. The percentage of students who withdrew from all their courses fell from 16 percent in the early 2000's to 10 or 13 percent in recent years. Compared to all students at Chabot, Pacific Islander students had slightly lower success rates and higher withdrawal rates.

Quarter/ semester	Number of course enrollments at Census	By course enrollments			By students	
		Percentage of course enrollments			Number of students enrolled	Percentage of students Withdrawn from all courses
		Success (A,B,C, CR, P)	Non-success (D, F, NC, NP, I)	Withdrawal (W)		
Fall 2000	866	55%	16%	29%	306	16%
Fall 2001	878	59%	15%	26%	309	16%
Fall 2002	953	63%	13%	24%	329	17%
Fall 2003	836	60%	13%	27%	297	16%
Fall 2004	902	61%	18%	21%	324	11%
Fall 2005	1,059	59%	16%	25%	364	15%
Fall 2006	1,050	59%	16%	25%	369	15%
Fall 2007	1,082	57%	18%	24%	383	12%
Fall 2008	1,166	60%	18%	21%	399	15%
Fall 2009	1,078	62%	21%	17%	380	9%
Fall 2010	1,170	64%	18%	18%	384	8%
Fall 2011	787	61%	18%	21%	286	12%
Fall 2012	766	70%	16%	14%	286	10%
Fall 2013	702	63%	20%	17%	264	11%
Fall 2014	597	62%	19%	19%	225	14%
Fall 2015	641	63%	20%	17%	244	11%
Fall 2016	608	61%	19%	20%	264	14%
Fall 2017*	1,424	63%	18%	19%	550	13%

NOTE: *Starting in Fall 2017, all Pacific Islanders are counted regardless of race or ethnicity.

Chabot College

Percentage of Success, Non-Success, and Withdrawal by Pacific Islanders Fall 2000 to Fall 2017



Chabot College

Course success and withdrawal rates, by courses and students

Fall 2000 to Fall 2017

Whites

Chabot White students' success rates have remained stable at 73-77 percent in the past eight years, rising from the traditional 67-69 percent in early 2000's. Withdrawal rates dropped from 21-23 percent in early 2000's to 15 percent in recent years. Non-success rates (D, F, No Credit, No Pass, or Incomplete) have gone up slightly from an average of 10 percent during the early 2000's to 12 percent in Fall 2017. The percentage of students who withdrew from all their courses fell from 22 percent in the early 2000's to 13 percent in recent years. Compared to all students at Chabot, White students higher success rates and lower non-success rates.

Quarter/ semester	By course enrollments				By students	
	Number of course enrollments at Census	Percentage of course enrollments			Number of students enrolled	Percentage of students
		Success (A,B,C, CR, P)	Non-success (D, F, NC, NP, I)	Withdrawal (W)		Withdrew from all courses
Fall 2000	10,627	67%	10%	23%	4,491	15%
Fall 2001	10,351	70%	9%	20%	4,784	22%
Fall 2002	10,898	69%	9%	21%	5,013	22%
Fall 2003	10,138	73%	9%	18%	4,474	21%
Fall 2004	9,641	73%	8%	19%	4,270	23%
Fall 2005	8,620	71%	10%	19%	3,655	20%
Fall 2006	8,030	73%	9%	18%	3,490	18%
Fall 2007	7,848	72%	10%	18%	3,322	14%
Fall 2008	7,684	72%	11%	17%	3,333	16%
Fall 2009	8,244	74%	12%	14%	3,523	15%
Fall 2010	8,270	75%	11%	14%	3,362	13%
Fall 2011	6,723	77%	10%	14%	2,640	10%
Fall 2012	5,948	76%	10%	14%	2,401	9%
Fall 2013	6,053	76%	11%	13%	2,462	9%
Fall 2014	5,646	75%	11%	14%	2,412	10%
Fall 2015	5,446	76%	11%	13%	2,422	13%
Fall 2016	5,212	75%	11%	15%	2,462	15%
Fall 2017*	9,947	73%	12%	15%	4,218	13%

NOTE: *Starting in Fall 2017, all White students are counted regardless of race or ethnicity.

