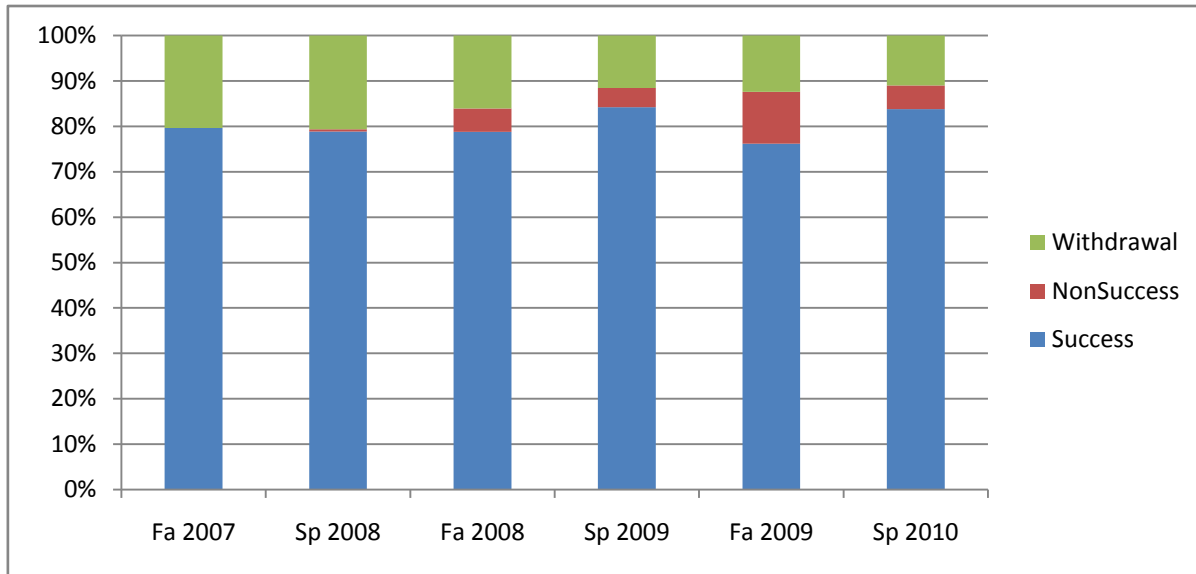
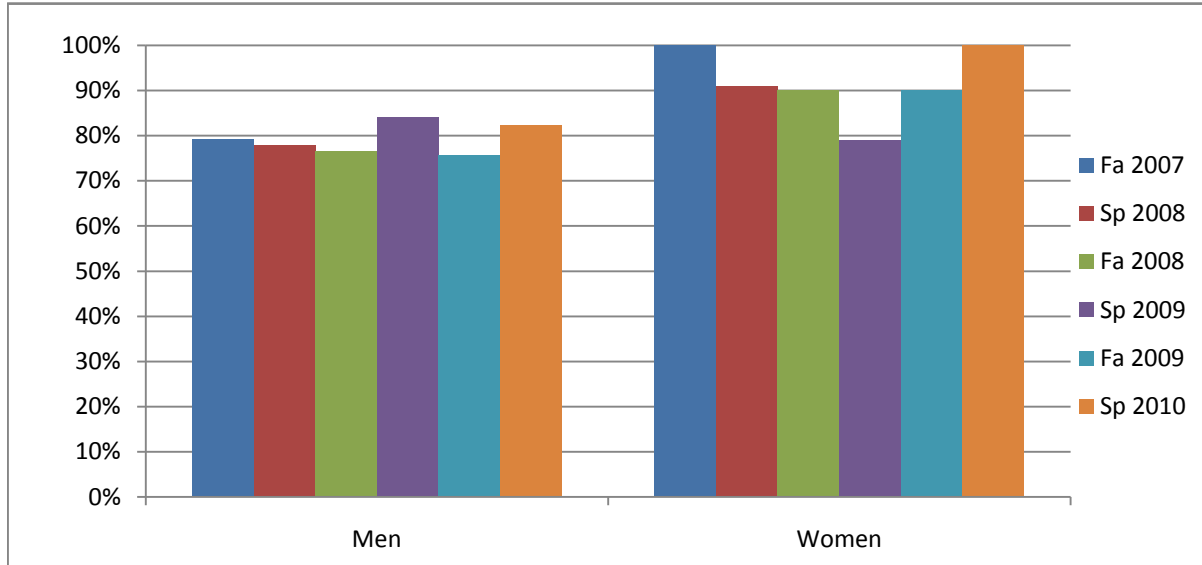


Chabot
Success, Non-Success, and Withdrawal Rates By Semester
Discipline: WELD



| | Fa 2007 | Sp 2008 | Fa 2008 | Sp 2009 | Fa 2009 | Sp 2010 |
|----------------|------------|------------|------------|------------|------------|------------|
| Success | 80% | 79% | 79% | 84% | 76% | 84% |
| Non-Success | 0% | 1% | 5% | 4% | 11% | 5% |
| Withdrawal | 20% | 21% | 16% | 12% | 12% | 11% |
| Total Percent | 100% | 100% | 100% | 100% | 100% | 100% |
| Total Enrolled | 167 | 194 | 193 | 234 | 210 | 191 |

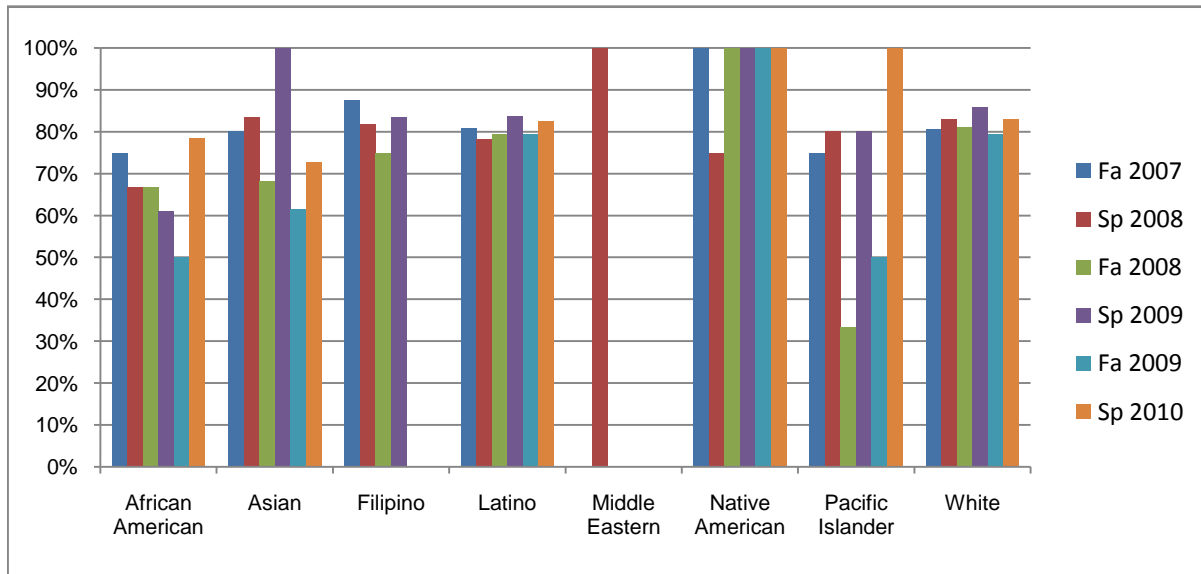
Chabot
Success Rates By Gender and Semester
Discipline: WELD



| | Fa 2007 | Sp 2008 | Fa 2008 | Sp 2009 | Fa 2009 | Sp 2010 |
|----------------|------------|------------|------------|------------|------------|------------|
| Men | | | | | | |
| Success | 79% | 78% | 77% | 84% | 76% | 82% |
| Non-Success | 0% | 1% | 6% | 4% | 12% | 6% |
| Withdrawal | 21% | 21% | 18% | 12% | 13% | 12% |
| Total Percent | 100% | 100% | 100% | 100% | 100% | 100% |
| Total Enrolled | 158 | 177 | 171 | 208 | 196 | 175 |
| Women | | | | | | |
| Success | 100% | 91% | 90% | 79% | 90% | 100% |
| Non-Success | 0% | 0% | 0% | 5% | 0% | 0% |
| Withdrawal | 0% | 9% | 10% | 16% | 10% | 0% |
| Total Percent | 100% | 100% | 100% | 100% | 100% | 100% |
| Total Enrolled | 2 | 11 | 10 | 19 | 10 | 10 |

Ethnicity_Totals_Discipline

Chabot Success Rates By Ethnicity and Semester Discipline: WELD



| | Fa 2007 | Sp 2008 | Fa 2008 | Sp 2009 | Fa 2009 | Sp 2010 |
|-------------------------|---------|---------|---------|---------|---------|---------|
| African American | | | | | | |
| Success | 75% | 67% | 67% | 61% | 50% | 79% |
| Non-Success | 0% | 0% | 0% | 17% | 29% | 0% |
| Withdrawal | 25% | 33% | 33% | 22% | 21% | 21% |
| Total Percent | 100% | 100% | 100% | 100% | 100% | 100% |
| Total Enrolled | 16 | 12 | 12 | 18 | 14 | 14 |
| Asian | | | | | | |
| Success | 80% | 83% | 68% | 100% | 62% | 73% |
| Non-Success | 0% | 0% | 14% | 0% | 15% | 9% |
| Withdrawal | 20% | 17% | 18% | 0% | 23% | 18% |
| Total Percent | 100% | 100% | 100% | 100% | 100% | 100% |
| Total Enrolled | 10 | 6 | 22 | 11 | 13 | 11 |
| Filipino | | | | | | |
| Success | 88% | 82% | 75% | 83% | 0% | 0% |
| Non-Success | 0% | 0% | 0% | 8% | 100% | 0% |
| Withdrawal | 13% | 18% | 25% | 8% | 0% | 0% |
| Total Percent | 100% | 100% | 100% | 100% | 100% | 0% |
| Total Enrolled | 8 | 11 | 8 | 12 | 1 | 0 |
| Latino | | | | | | |
| Success | 81% | 78% | 79% | 84% | 79% | 82% |
| Non-Success | 0% | 0% | 7% | 3% | 10% | 5% |
| Withdrawal | 19% | 22% | 13% | 14% | 10% | 12% |
| Total Percent | 100% | 100% | 100% | 100% | 100% | 100% |
| Total Enrolled | 52 | 60 | 68 | 74 | 58 | 57 |
| Middle Eastern | | | | | | |
| Success | 0% | 100% | 0% | 0% | 0% | 0% |
| Non-Success | 0% | 0% | 0% | 0% | 0% | 0% |
| Withdrawal | 0% | 0% | 0% | 0% | 0% | 0% |

Ethnicity_Totals_Discipline

| | | | | | | |
|-------------------------|-----------|-----------|-----------|-----------|-----------|-----------|
| Total Percent | 0% | 100% | 0% | 0% | 0% | 0% |
| Total Enrolled | 0 | 1 | 0 | 0 | 0 | 0 |
| Native American | | | | | | |
| Success | 100% | 75% | 100% | 100% | 100% | 100% |
| Non-Success | 0% | 0% | 0% | 0% | 0% | 0% |
| Withdrawal | 0% | 25% | 0% | 0% | 0% | 0% |
| Total Percent | 100% | 100% | 100% | 100% | 100% | 100% |
| Total Enrolled | 4 | 4 | 2 | 3 | 1 | 1 |
| Pacific Islander | | | | | | |
| Success | 75% | 80% | 33% | 80% | 50% | 100% |
| Non-Success | 0% | 0% | 33% | 0% | 0% | 0% |
| Withdrawal | 25% | 20% | 33% | 20% | 50% | 0% |
| Total Percent | 100% | 100% | 100% | 100% | 100% | 100% |
| Total Enrolled | 4 | 5 | 3 | 5 | 2 | 2 |
| White | | | | | | |
| Success | 81% | 83% | 81% | 86% | 79% | 83% |
| Non-Success | 0% | 1% | 2% | 4% | 7% | 8% |
| Withdrawal | 19% | 16% | 17% | 10% | 14% | 8% |
| Total Percent | 100% | 100% | 100% | 100% | 100% | 100% |
| Total Enrolled | 57 | 76 | 53 | 77 | 87 | 71 |