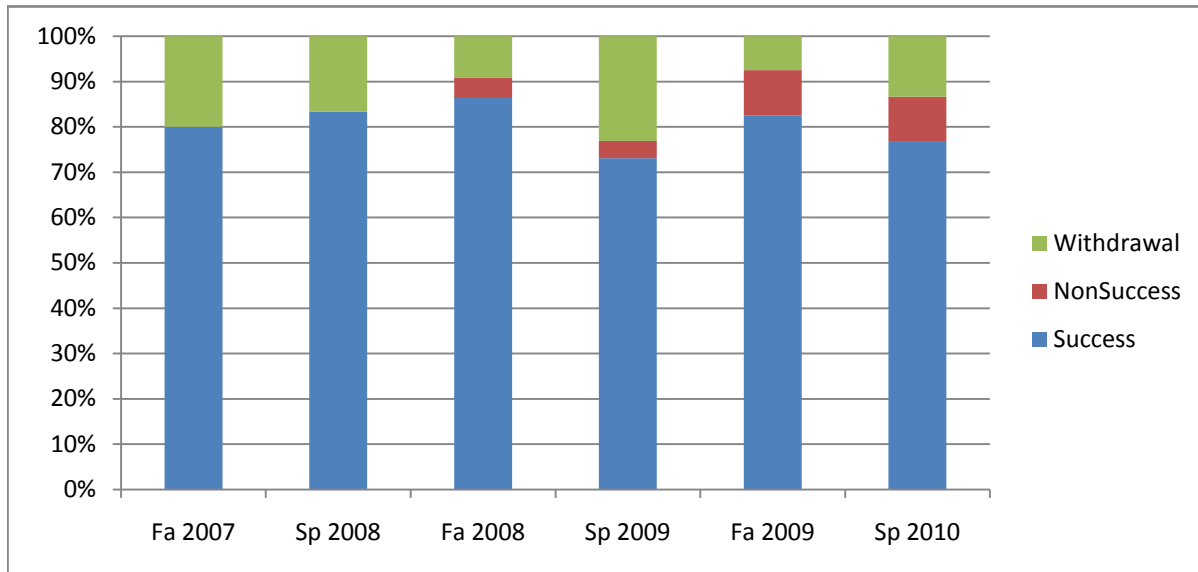
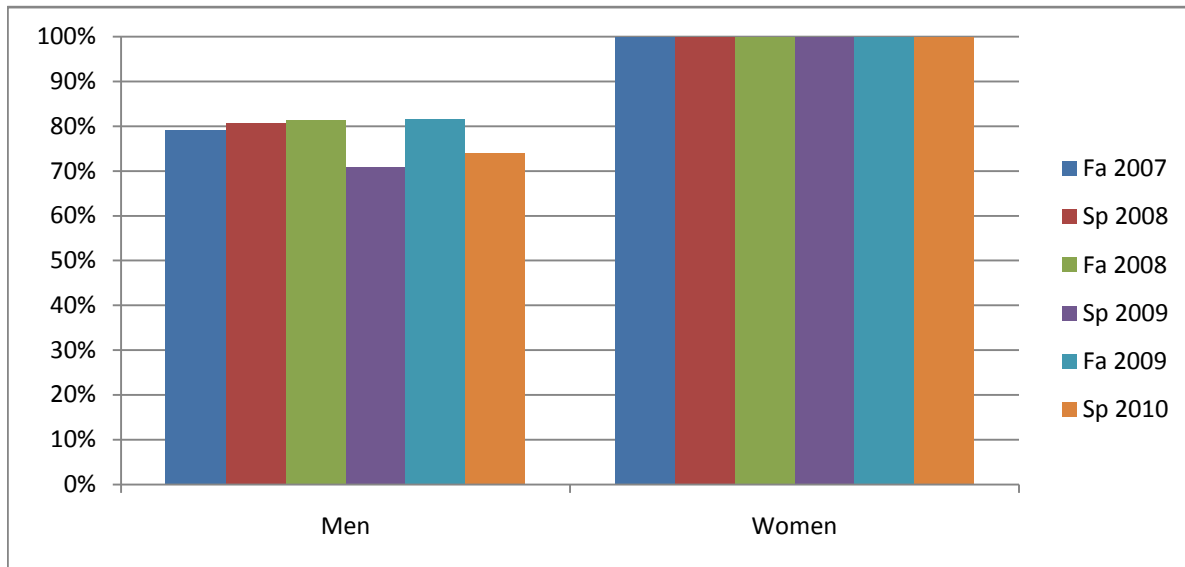


Chabot
Success, Non-Success, and Withdrawal Rates By Semester
Course: WELD 67A



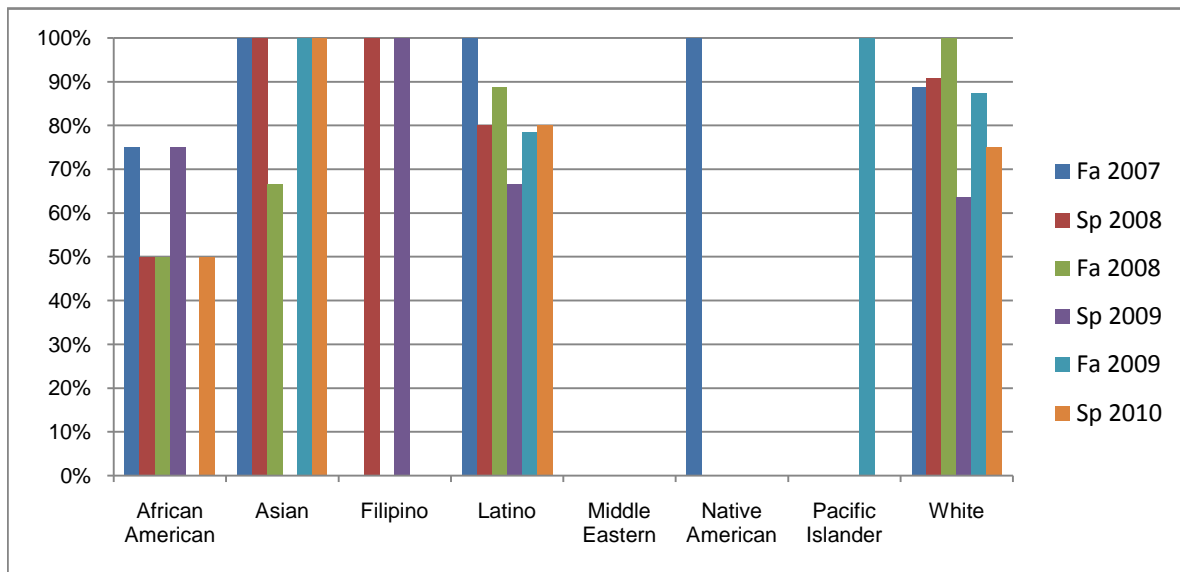
| | Fa 2007 | Sp 2008 | Fa 2008 | Sp 2009 | Fa 2009 | Sp 2010 |
|----------------|---------|---------|---------|---------|---------|---------|
| Success | 80% | 83% | 86% | 73% | 83% | 77% |
| Non-Success | 0% | 0% | 5% | 4% | 10% | 10% |
| Withdrawal | 20% | 17% | 9% | 23% | 8% | 13% |
| Total Percent | 100% | 100% | 100% | 100% | 100% | 100% |
| Total Enrolled | 25 | 30 | 22 | 26 | 40 | 30 |

Chabot
Success Rates By Gender and Semester
Course: WELD 67A



| | Fa 2007 | Sp 2008 | Fa 2008 | Sp 2009 | Fa 2009 | Sp 2010 |
|----------------|---------|---------|---------|---------|---------|---------|
| Men | | | | | | |
| Success | 79% | 81% | 81% | 71% | 82% | 74% |
| Non-Success | 0% | 0% | 6% | 4% | 11% | 11% |
| Withdrawal | 21% | 19% | 13% | 25% | 8% | 15% |
| Total Percent | 100% | 100% | 100% | 100% | 100% | 100% |
| Total Enrolled | 24 | 26 | 16 | 24 | 38 | 27 |
| Women | | | | | | |
| Success | 100% | 100% | 100% | 100% | 100% | 100% |
| Non-Success | 0% | 0% | 0% | 0% | 0% | 0% |
| Withdrawal | 0% | 0% | 0% | 0% | 0% | 0% |
| Total Percent | 100% | 100% | 100% | 100% | 100% | 100% |
| Total Enrolled | 1 | 3 | 2 | 1 | 1 | 2 |

Chabot
Success Rates By Ethnicity and Semester
Course: WELD 67A



| | Fa 2007 | Sp 2008 | Fa 2008 | Sp 2009 | Fa 2009 | Sp 2010 |
|-------------------------|---------|---------|---------|---------|---------|---------|
| African American | | | | | | |
| Success | 75% | 50% | 50% | 75% | 0% | 50% |
| Non-Success | 0% | 0% | 0% | 0% | 0% | 0% |
| Withdrawal | 25% | 50% | 50% | 25% | 100% | 50% |
| Total Percent | 100% | 100% | 100% | 100% | 100% | 100% |
| Total Enrolled | 4 | 2 | 2 | 4 | 1 | 2 |
| Asian | | | | | | |
| Success | 100% | 100% | 67% | 0% | 100% | 100% |
| Non-Success | 0% | 0% | 33% | 0% | 0% | 0% |
| Withdrawal | 0% | 0% | 0% | 0% | 0% | 0% |
| Total Percent | 100% | 100% | 100% | 0% | 100% | 100% |
| Total Enrolled | 1 | 1 | 3 | 0 | 1 | 3 |
| Filipino | | | | | | |
| Success | 0% | 100% | 0% | 100% | 0% | 0% |
| Non-Success | 0% | 0% | 0% | 0% | 0% | 0% |
| Withdrawal | 0% | 0% | 0% | 0% | 0% | 0% |
| Total Percent | 0% | 100% | 0% | 100% | 0% | 0% |
| Total Enrolled | 0 | 2 | 0 | 1 | 0 | 0 |
| Latino | | | | | | |
| Success | 100% | 80% | 89% | 67% | 79% | 80% |
| Non-Success | 0% | 0% | 0% | 0% | 14% | 10% |
| Withdrawal | 0% | 20% | 11% | 33% | 7% | 10% |
| Total Percent | 100% | 100% | 100% | 100% | 100% | 100% |
| Total Enrolled | 6 | 10 | 9 | 3 | 14 | 10 |
| Middle Eastern | | | | | | |
| Success | 0% | 0% | 0% | 0% | 0% | 0% |
| Non-Success | 0% | 0% | 0% | 0% | 0% | 0% |
| Withdrawal | 0% | 0% | 0% | 0% | 0% | 0% |

| | | | | | | | |
|-------------------------|----------------|------|------|------|------|------|------|
| | Total Percent | 0% | 0% | 0% | 0% | 0% | 0% |
| | Total Enrolled | 0 | 0 | 0 | 0 | 0 | 0 |
| Native American | | | | | | | |
| | Success | 100% | 0% | 0% | 0% | 0% | 0% |
| | Non-Success | 0% | 0% | 0% | 0% | 0% | 0% |
| | Withdrawal | 0% | 0% | 0% | 0% | 0% | 0% |
| | Total Percent | 100% | 0% | 0% | 0% | 0% | 0% |
| | Total Enrolled | 1 | 0 | 0 | 0 | 0 | 0 |
| Pacific Islander | | | | | | | |
| | Success | 0% | 0% | 0% | 0% | 100% | 0% |
| | Non-Success | 0% | 0% | 0% | 0% | 0% | 0% |
| | Withdrawal | 0% | 0% | 0% | 0% | 0% | 0% |
| | Total Percent | 0% | 0% | 0% | 0% | 100% | 0% |
| | Total Enrolled | 0 | 0 | 0 | 0 | 1 | 0 |
| White | | | | | | | |
| | Success | 89% | 91% | 100% | 64% | 88% | 75% |
| | Non-Success | 0% | 0% | 0% | 9% | 6% | 17% |
| | Withdrawal | 11% | 9% | 0% | 27% | 6% | 8% |
| | Total Percent | 100% | 100% | 100% | 100% | 100% | 100% |
| | Total Enrolled | 9 | 11 | 4 | 11 | 16 | 12 |