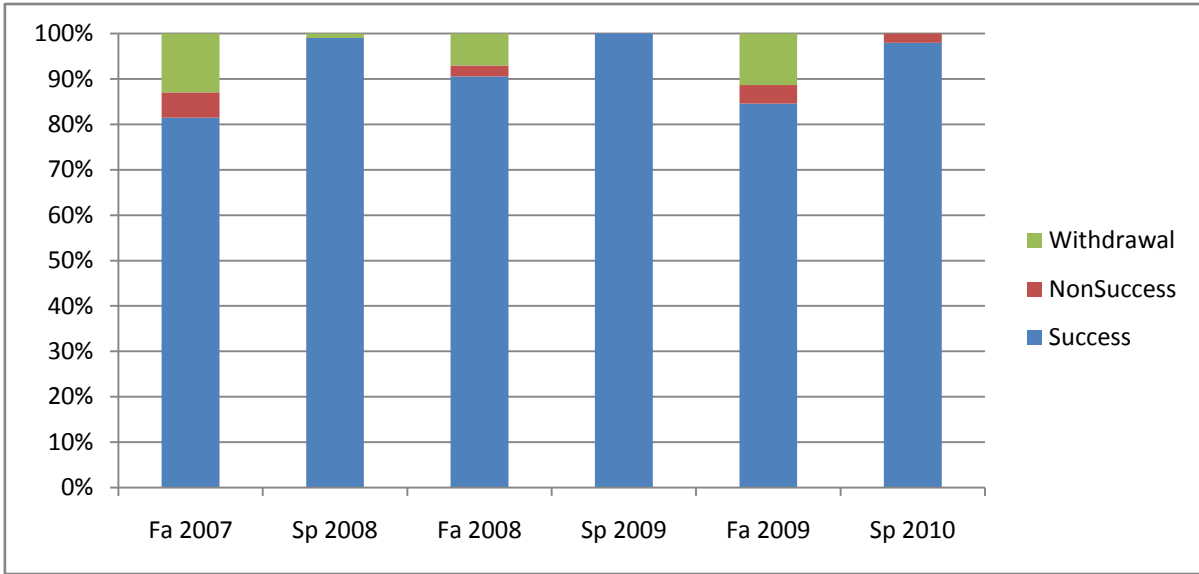
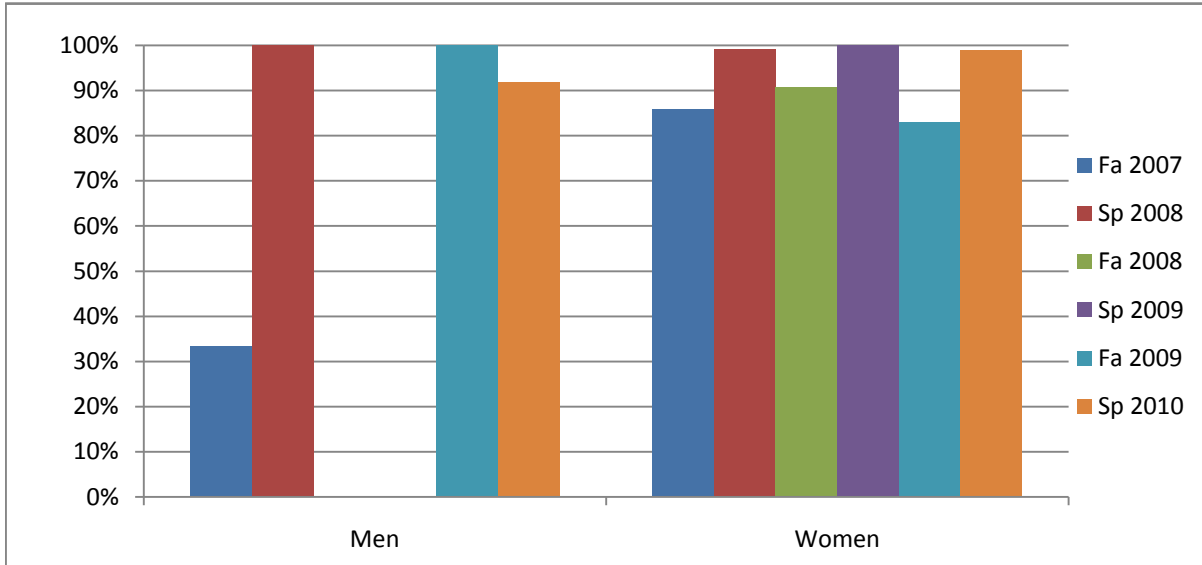


Chabot
 Success, Non-Success, and Withdrawal Rates By Semester
 Discipline: MEDA



| | Fa 2007 | Sp 2008 | Fa 2008 | Sp 2009 | Fa 2009 | Sp 2010 |
|----------------|------------|------------|-----------|------------|-----------|-----------|
| Success | 81% | 99% | 91% | 100% | 85% | 98% |
| Non-Success | 6% | 0% | 2% | 0% | 4% | 2% |
| Withdrawal | 13% | 1% | 7% | 0% | 11% | 0% |
| Total Percent | 100% | 100% | 100% | 100% | 100% | 100% |
| Total Enrolled | 108 | 103 | 85 | 102 | 97 | 98 |

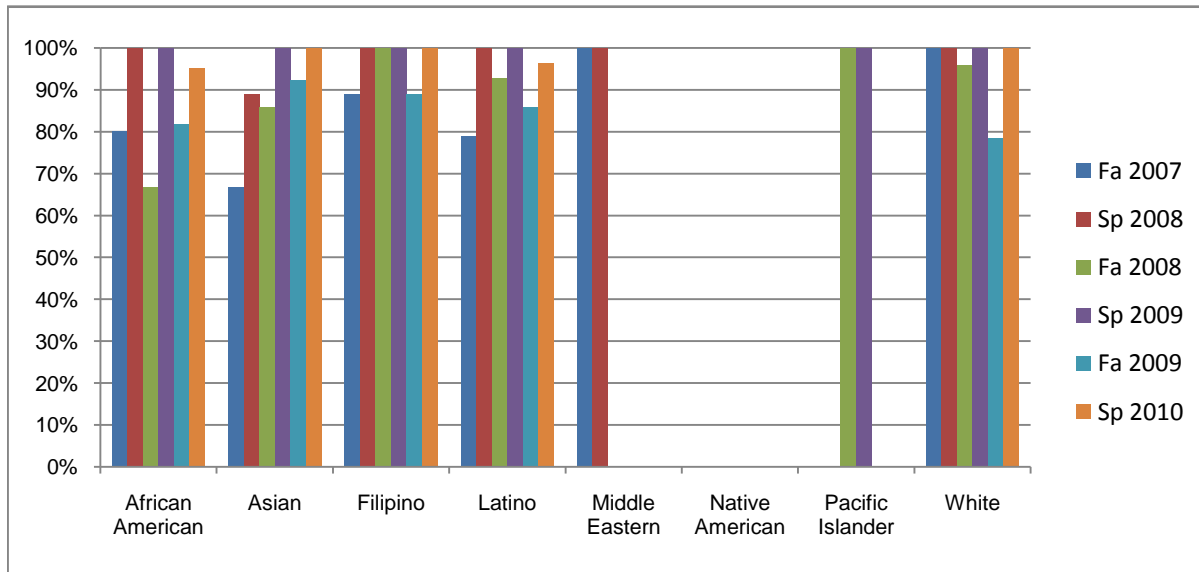
Chabot
Success Rates By Gender and Semester
Discipline: MEDA



| | Fa 2007 | Sp 2008 | Fa 2008 | Sp 2009 | Fa 2009 | Sp 2010 |
|----------------|-----------|-----------|-----------|------------|-----------|-----------|
| Men | | | | | | |
| Success | 33% | 100% | 0% | 0% | 100% | 92% |
| Non-Success | 33% | 0% | 0% | 0% | 0% | 8% |
| Withdrawal | 33% | 0% | 0% | 0% | 0% | 0% |
| Total Percent | 100% | 100% | 0% | 0% | 100% | 100% |
| Total Enrolled | 9 | 4 | 0 | 0 | 9 | 12 |
| Women | | | | | | |
| Success | 86% | 99% | 91% | 100% | 83% | 99% |
| Non-Success | 3% | 0% | 2% | 0% | 5% | 1% |
| Withdrawal | 11% | 1% | 7% | 0% | 13% | 0% |
| Total Percent | 100% | 100% | 100% | 100% | 100% | 100% |
| Total Enrolled | 99 | 99 | 85 | 102 | 88 | 86 |

Ethnicity_Totals_Discipline

Chabot
Success Rates By Ethnicity and Semester
Discipline: MEDA



| | Fa 2007 | Sp 2008 | Fa 2008 | Sp 2009 | Fa 2009 | Sp 2010 |
|-------------------------|-----------|-----------|-----------|-----------|-----------|-----------|
| African American | | | | | | |
| Success | 80% | 100% | 67% | 100% | 82% | 95% |
| Non-Success | 0% | 0% | 0% | 0% | 9% | 5% |
| Withdrawal | 20% | 0% | 33% | 0% | 9% | 0% |
| Total Percent | 100% | 100% | 100% | 100% | 100% | 100% |
| Total Enrolled | 15 | 16 | 9 | 8 | 22 | 21 |
| Asian | | | | | | |
| Success | 67% | 89% | 86% | 100% | 92% | 100% |
| Non-Success | 0% | 0% | 7% | 0% | 0% | 0% |
| Withdrawal | 33% | 11% | 7% | 0% | 8% | 0% |
| Total Percent | 100% | 100% | 100% | 100% | 100% | 100% |
| Total Enrolled | 15 | 9 | 14 | 14 | 13 | 13 |
| Filipino | | | | | | |
| Success | 89% | 100% | 100% | 100% | 89% | 100% |
| Non-Success | 11% | 0% | 0% | 0% | 0% | 0% |
| Withdrawal | 0% | 0% | 0% | 0% | 11% | 0% |
| Total Percent | 100% | 100% | 100% | 100% | 100% | 100% |
| Total Enrolled | 9 | 9 | 7 | 11 | 18 | 18 |
| Latino | | | | | | |
| Success | 79% | 100% | 93% | 100% | 86% | 96% |
| Non-Success | 5% | 0% | 4% | 0% | 5% | 4% |
| Withdrawal | 16% | 0% | 4% | 0% | 10% | 0% |
| Total Percent | 100% | 100% | 100% | 100% | 100% | 100% |
| Total Enrolled | 38 | 39 | 28 | 31 | 21 | 27 |
| Middle Eastern | | | | | | |
| Success | 100% | 100% | 0% | 0% | 0% | 0% |
| Non-Success | 0% | 0% | 0% | 0% | 0% | 0% |
| Withdrawal | 0% | 0% | 0% | 0% | 0% | 0% |

Ethnicity_Totals_Discipline

| | | | | | | |
|-------------------------|-----------|-----------|-----------|-----------|-----------|-----------|
| Total Percent | 100% | 100% | 0% | 0% | 0% | 0% |
| Total Enrolled | 3 | 4 | 0 | 0 | 0 | 0 |
| Native American | | | | | | |
| Success | 0% | 0% | 0% | 0% | 0% | 0% |
| Non-Success | 0% | 0% | 0% | 0% | 0% | 0% |
| Withdrawal | 0% | 0% | 0% | 0% | 0% | 0% |
| Total Percent | 0% | 0% | 0% | 0% | 0% | 0% |
| Total Enrolled | 0 | 0 | 0 | 0 | 0 | 0 |
| Pacific Islander | | | | | | |
| Success | 0% | 0% | 100% | 100% | 0% | 0% |
| Non-Success | 0% | 0% | 0% | 0% | 0% | 0% |
| Withdrawal | 0% | 0% | 0% | 0% | 0% | 0% |
| Total Percent | 0% | 0% | 100% | 100% | 0% | 0% |
| Total Enrolled | 0 | 0 | 3 | 4 | 0 | 0 |
| White | | | | | | |
| Success | 100% | 100% | 96% | 100% | 79% | 100% |
| Non-Success | 0% | 0% | 0% | 0% | 7% | 0% |
| Withdrawal | 0% | 0% | 4% | 0% | 14% | 0% |
| Total Percent | 100% | 100% | 100% | 100% | 100% | 100% |
| Total Enrolled | 22 | 22 | 24 | 34 | 14 | 13 |