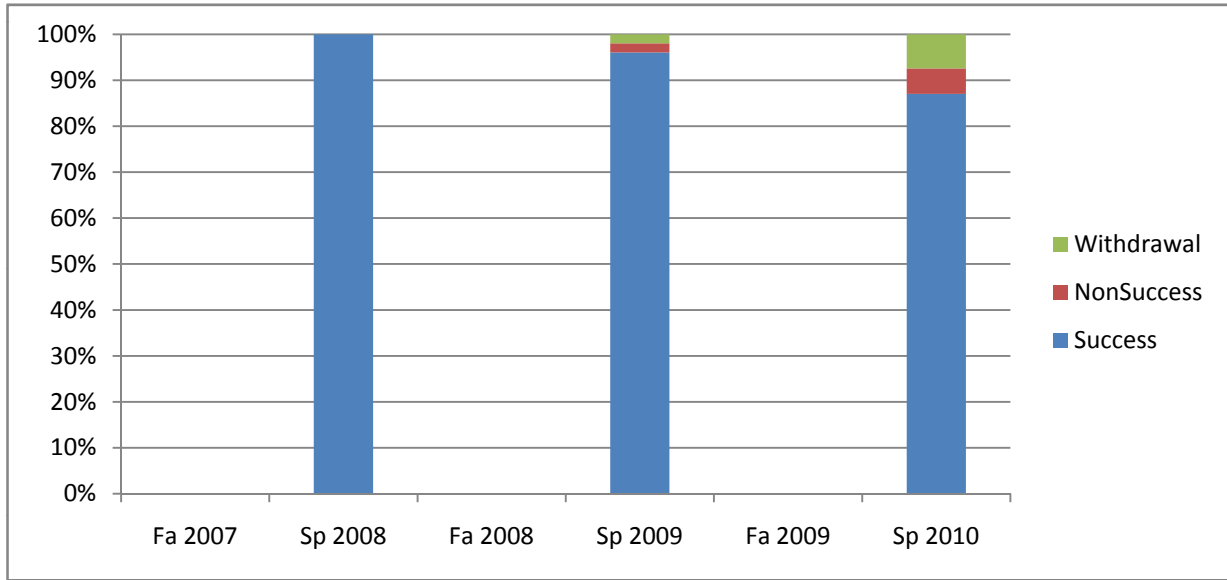
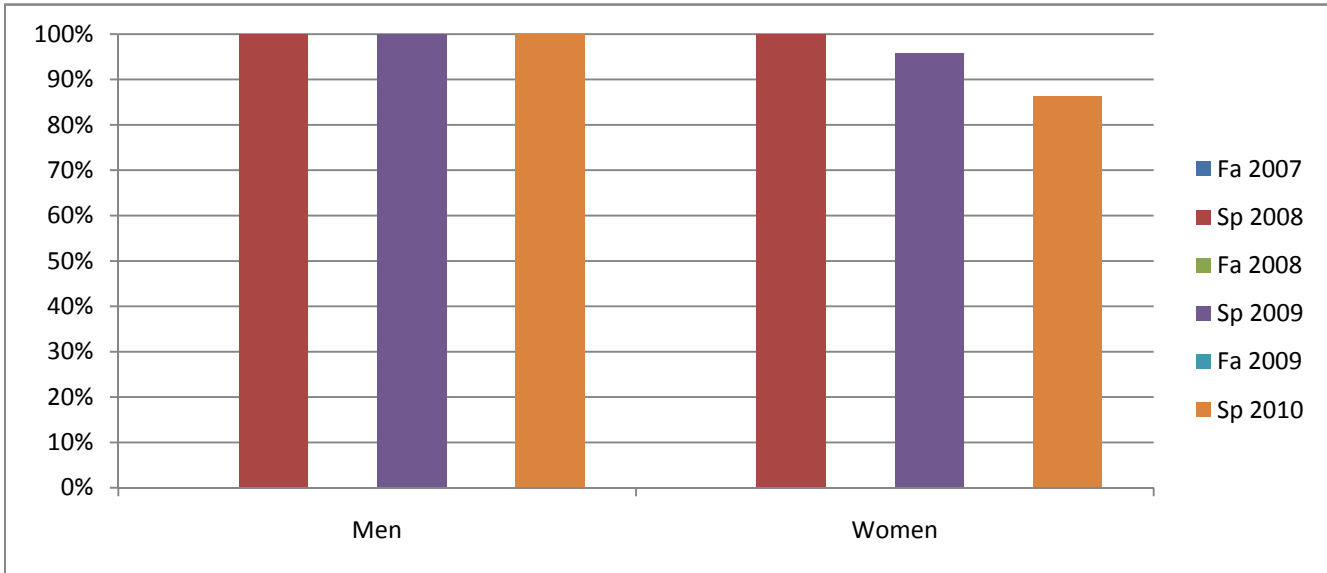


Chabot
 Success, Non-Success, and Withdrawal Rates By Semester
 Course: NURS 75



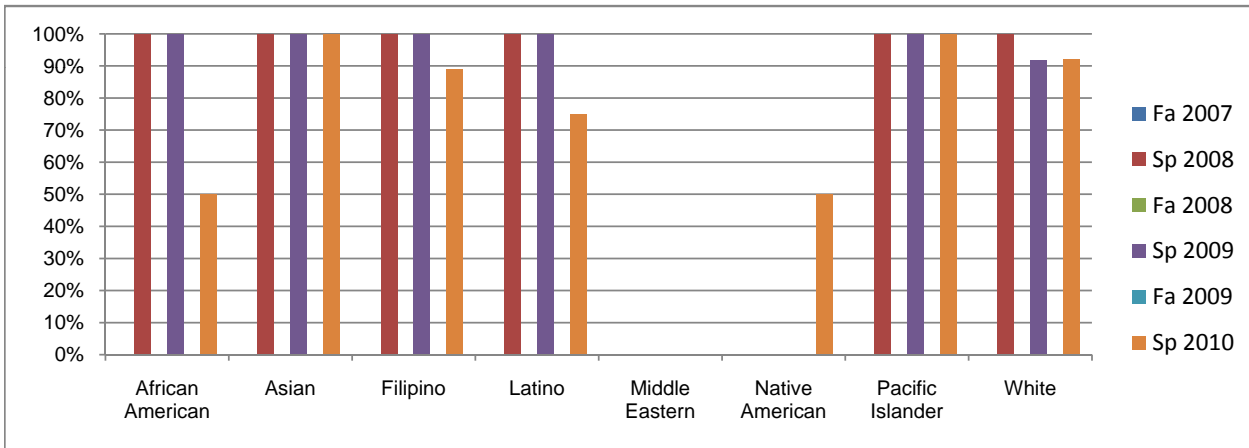
	Fa 2007	Sp 2008	Fa 2008	Sp 2009	Fa 2009	Sp 2010
Success	0%	100%	0%	96%	0%	87%
Non-Success	0%	0%	0%	2%	0%	6%
Withdrawal	0%	0%	0%	2%	0%	7%
Total Percent	0%	100%	0%	100%	0%	100%
Total Enrolled	0	51	0	51	0	54

Chabot
 Success Rates By Gender and Semester
 Course: NURS 75



	Fa 2007	Sp 2008	Fa 2008	Sp 2009	Fa 2009	Sp 2010
Men						
Success	0%	100%	0%	100%	0%	100%
Non-Success	0%	0%	0%	0%	0%	0%
Withdrawal	0%	0%	0%	0%	0%	0%
Total Percent	0%	100%	0%	100%	0%	100%
Total Enrolled	0	9	0	4	0	2
Women						
Success	0%	100%	0%	96%	0%	86%
Non-Success	0%	0%	0%	2%	0%	6%
Withdrawal	0%	0%	0%	2%	0%	8%
Total Percent	0%	100%	0%	100%	0%	100%
Total Enrolled	0	42	0	47	0	51

Chabot
Success Rates By Ethnicity and Semester
Course: NURS 75



	Fa 2007	Sp 2008	Fa 2008	Sp 2009	Fa 2009	Sp 2010
African American						
Success	0%	100%	0%	100%	0%	50%
Non-Success	0%	0%	0%	0%	0%	0%
Withdrawal	0%	0%	0%	0%	0%	50%
Total Percent	0%	100%	0%	100%	0%	100%
Total Enrolled	0	4	0	2	0	2
Asian						
Success	0%	100%	0%	100%	0%	100%
Non-Success	0%	0%	0%	0%	0%	0%
Withdrawal	0%	0%	0%	0%	0%	0%
Total Percent	0%	100%	0%	100%	0%	100%
Total Enrolled	0	2	0	7	0	3
Filipino						
Success	0%	100%	0%	100%	0%	89%
Non-Success	0%	0%	0%	0%	0%	0%
Withdrawal	0%	0%	0%	0%	0%	11%
Total Percent	0%	100%	0%	100%	0%	100%
Total Enrolled	0	11	0	8	0	9
Latino						
Success	0%	100%	0%	100%	0%	75%
Non-Success	0%	0%	0%	0%	0%	13%
Withdrawal	0%	0%	0%	0%	0%	13%
Total Percent	0%	100%	0%	100%	0%	100%
Total Enrolled	0	10	0	5	0	8
Middle Eastern						
Success	0%	0%	0%	0%	0%	0%
Non-Success	0%	0%	0%	0%	0%	0%
Withdrawal	0%	0%	0%	0%	0%	0%
Total Percent	0%	0%	0%	0%	0%	0%
Total Enrolled	0	0	0	0	0	0
Native American						
Success	0%	0%	0%	0%	0%	50%
Non-Success	0%	0%	0%	0%	0%	0%
Withdrawal	0%	0%	0%	0%	0%	50%
Total Percent	0%	0%	0%	0%	0%	100%
Total Enrolled	0	0	0	0	0	2
Pacific Islander						
Success	0%	100%	0%	100%	0%	100%
Non-Success	0%	0%	0%	0%	0%	0%
Withdrawal	0%	0%	0%	0%	0%	0%
Total Percent	0%	100%	0%	100%	0%	100%
Total Enrolled	0	4	0	1	0	1
White						
Success	0%	100%	0%	92%	0%	92%
Non-Success	0%	0%	0%	4%	0%	8%
Withdrawal	0%	0%	0%	4%	0%	0%
Total Percent	0%	100%	0%	100%	0%	100%
Total Enrolled	0	16	0	24	0	25