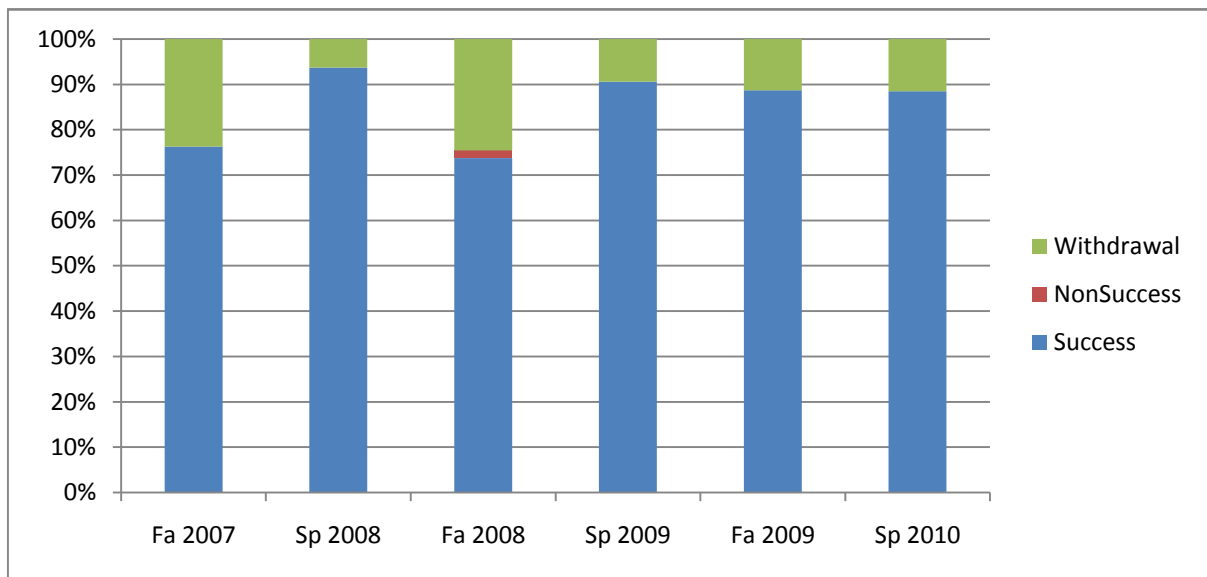
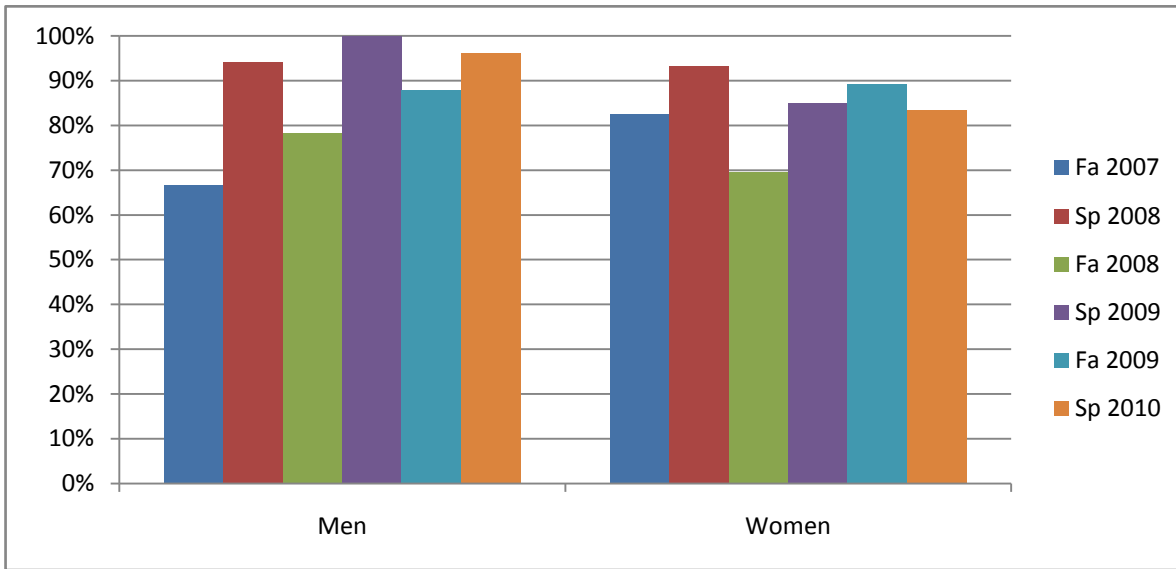


Chabot
 Success, Non-Success, and Withdrawal Rates By Semester
 Course: PHED 2SWI



| | Fa 2007 | Sp 2008 | Fa 2008 | Sp 2009 | Fa 2009 | Sp 2010 |
|----------------|-----------|-----------|-----------|-----------|-----------|-----------|
| Success | 76% | 94% | 74% | 91% | 89% | 88% |
| Non-Success | 0% | 0% | 2% | 0% | 0% | 0% |
| Withdrawal | 24% | 6% | 25% | 9% | 11% | 12% |
| Total Percent | 100% | 100% | 100% | 100% | 100% | 100% |
| Total Enrolled | 38 | 32 | 61 | 32 | 53 | 52 |

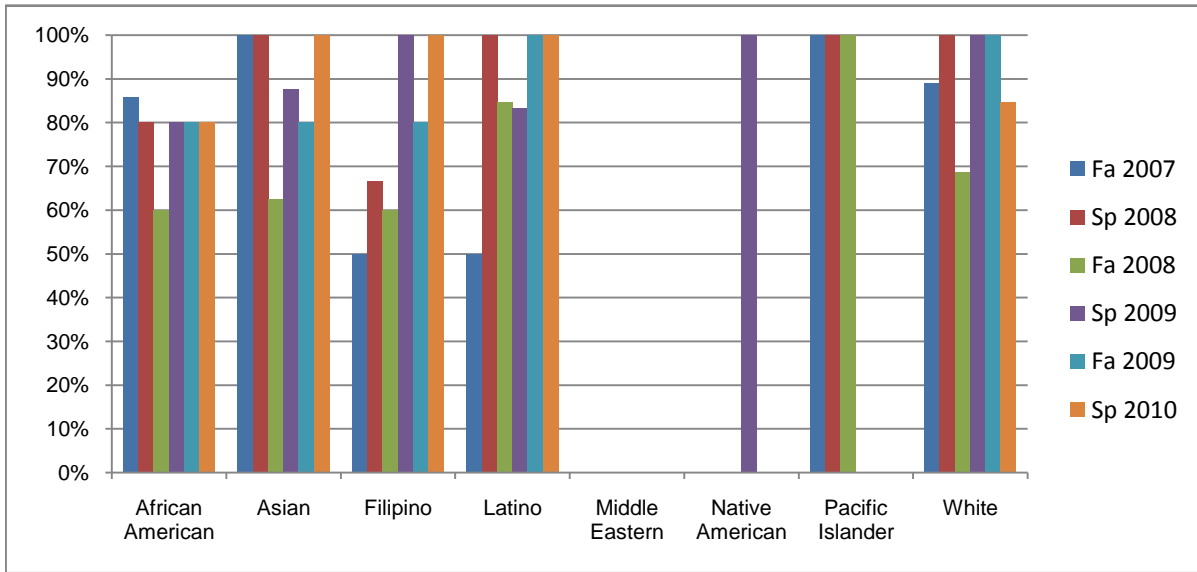
Chabot
Success Rates By Gender and Semester
Course: PHED 2SWI



| | Fa 2007 | Sp 2008 | Fa 2008 | Sp 2009 | Fa 2009 | Sp 2010 |
|----------------|-----------|-----------|-----------|-----------|-----------|-----------|
| Men | | | | | | |
| Success | 67% | 94% | 78% | 100% | 88% | 96% |
| Non-Success | 0% | 0% | 3% | 0% | 0% | 0% |
| Withdrawal | 33% | 6% | 19% | 0% | 12% | 4% |
| Total Percent | 100% | 100% | 100% | 100% | 100% | 100% |
| Total Enrolled | 15 | 17 | 37 | 11 | 25 | 26 |
| Women | | | | | | |
| Success | 83% | 93% | 70% | 85% | 89% | 83% |
| Non-Success | 0% | 0% | 0% | 0% | 0% | 0% |
| Withdrawal | 17% | 7% | 30% | 15% | 11% | 17% |
| Total Percent | 100% | 100% | 100% | 100% | 100% | 100% |
| Total Enrolled | 23 | 15 | 23 | 20 | 28 | 24 |

Ethnicity_Totals_Course

Chabot
Success Rates By Ethnicity and Semester
Course: PHED 2SWI



| | Fa 2007 | Sp 2008 | Fa 2008 | Sp 2009 | Fa 2009 | Sp 2010 |
|-------------------------|-----------|----------|-----------|----------|-----------|-----------|
| African American | | | | | | |
| Success | 86% | 80% | 60% | 80% | 80% | 80% |
| Non-Success | 0% | 0% | 0% | 0% | 0% | 0% |
| Withdrawal | 14% | 20% | 40% | 20% | 20% | 20% |
| Total Percent | 100% | 100% | 100% | 100% | 100% | 100% |
| Total Enrolled | 7 | 5 | 10 | 5 | 15 | 10 |
| Asian | | | | | | |
| Success | 100% | 100% | 63% | 88% | 80% | 100% |
| Non-Success | 0% | 0% | 0% | 0% | 0% | 0% |
| Withdrawal | 0% | 0% | 38% | 13% | 20% | 0% |
| Total Percent | 100% | 100% | 100% | 100% | 100% | 100% |
| Total Enrolled | 5 | 8 | 8 | 8 | 10 | 12 |
| Filipino | | | | | | |
| Success | 50% | 67% | 60% | 100% | 80% | 100% |
| Non-Success | 0% | 0% | 0% | 0% | 0% | 0% |
| Withdrawal | 50% | 33% | 40% | 0% | 20% | 0% |
| Total Percent | 100% | 100% | 100% | 100% | 100% | 100% |
| Total Enrolled | 2 | 3 | 5 | 2 | 5 | 4 |
| Latino | | | | | | |
| Success | 50% | 100% | 85% | 83% | 100% | 100% |
| Non-Success | 0% | 0% | 0% | 0% | 0% | 0% |
| Withdrawal | 50% | 0% | 15% | 17% | 0% | 0% |
| Total Percent | 100% | 100% | 100% | 100% | 100% | 100% |
| Total Enrolled | 10 | 9 | 13 | 6 | 10 | 10 |
| Middle Eastern | | | | | | |
| Success | 0% | 0% | 0% | 0% | 0% | 0% |
| Non-Success | 0% | 0% | 0% | 0% | 0% | 0% |
| Withdrawal | 0% | 0% | 0% | 0% | 0% | 0% |

Ethnicity_Totals_Course

| | | | | | | |
|-------------------------|----------|----------|-----------|----------|-----------|-----------|
| Total Percent | 0% | 0% | 0% | 0% | 0% | 0% |
| Total Enrolled | 0 | 0 | 0 | 0 | 0 | 0 |
| Native American | | | | | | |
| Success | 0% | 0% | 0% | 100% | 0% | 0% |
| Non-Success | 0% | 0% | 0% | 0% | 0% | 0% |
| Withdrawal | 100% | 0% | 0% | 0% | 0% | 0% |
| Total Percent | 100% | 0% | 0% | 100% | 0% | 0% |
| Total Enrolled | 1 | 0 | 0 | 2 | 0 | 0 |
| Pacific Islander | | | | | | |
| Success | 100% | 100% | 100% | 0% | 0% | 0% |
| Non-Success | 0% | 0% | 0% | 0% | 0% | 0% |
| Withdrawal | 0% | 0% | 0% | 0% | 0% | 0% |
| Total Percent | 100% | 100% | 100% | 0% | 0% | 0% |
| Total Enrolled | 2 | 1 | 1 | 0 | 0 | 0 |
| White | | | | | | |
| Success | 89% | 100% | 69% | 100% | 100% | 85% |
| Non-Success | 0% | 0% | 6% | 0% | 0% | 0% |
| Withdrawal | 11% | 0% | 25% | 0% | 0% | 15% |
| Total Percent | 100% | 100% | 100% | 100% | 100% | 100% |
| Total Enrolled | 9 | 5 | 16 | 6 | 10 | 13 |