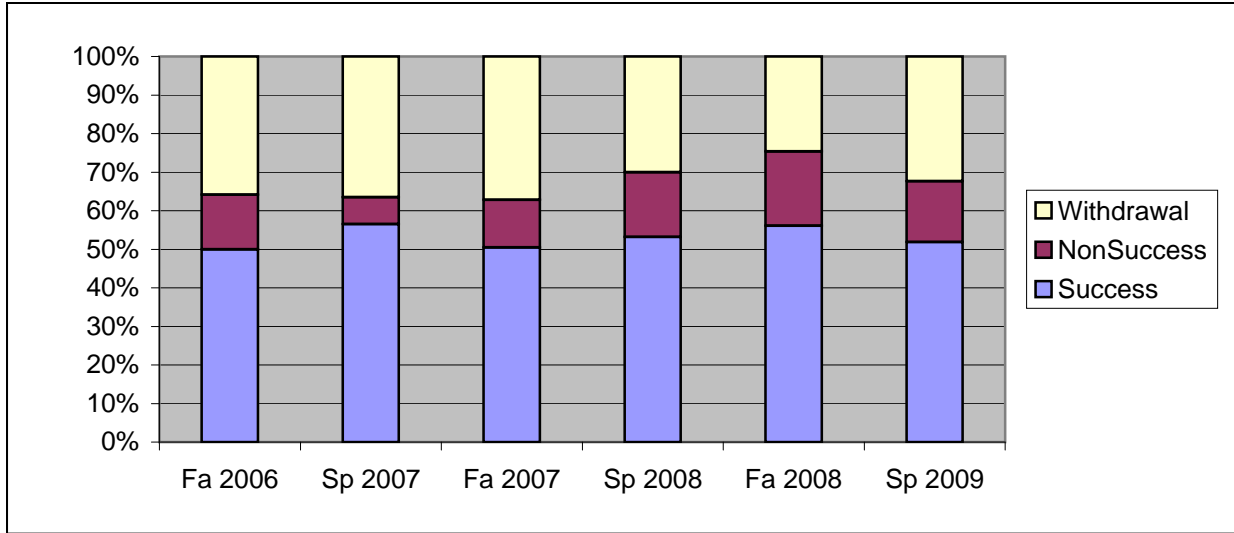
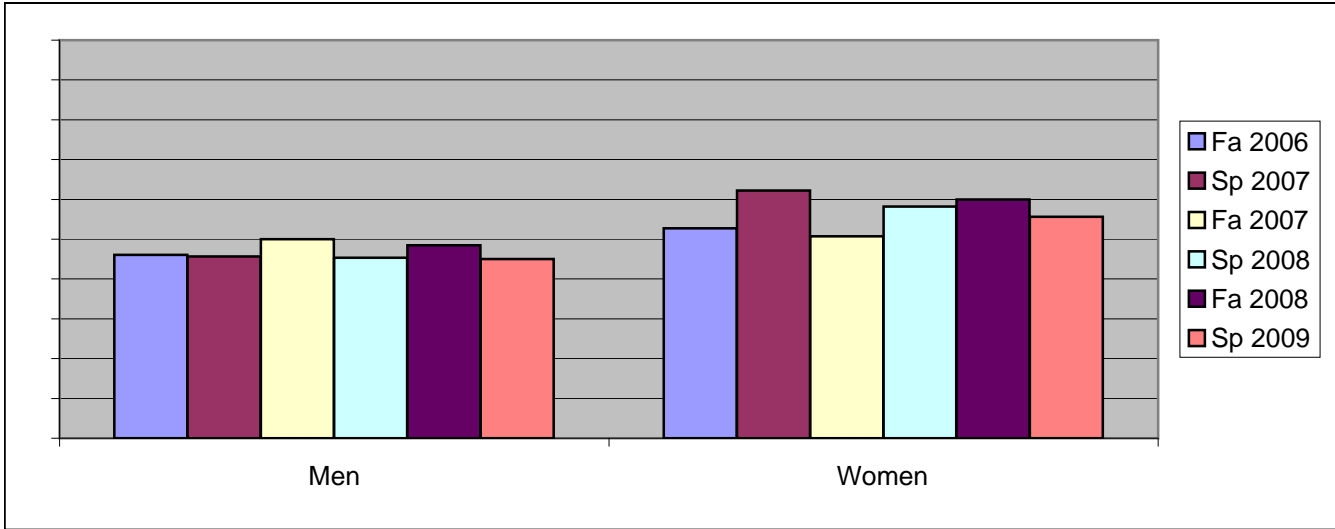


Chabot  
 Success, Non-Success, and Withdrawal Rates By Semester  
 Discipline: SPAN



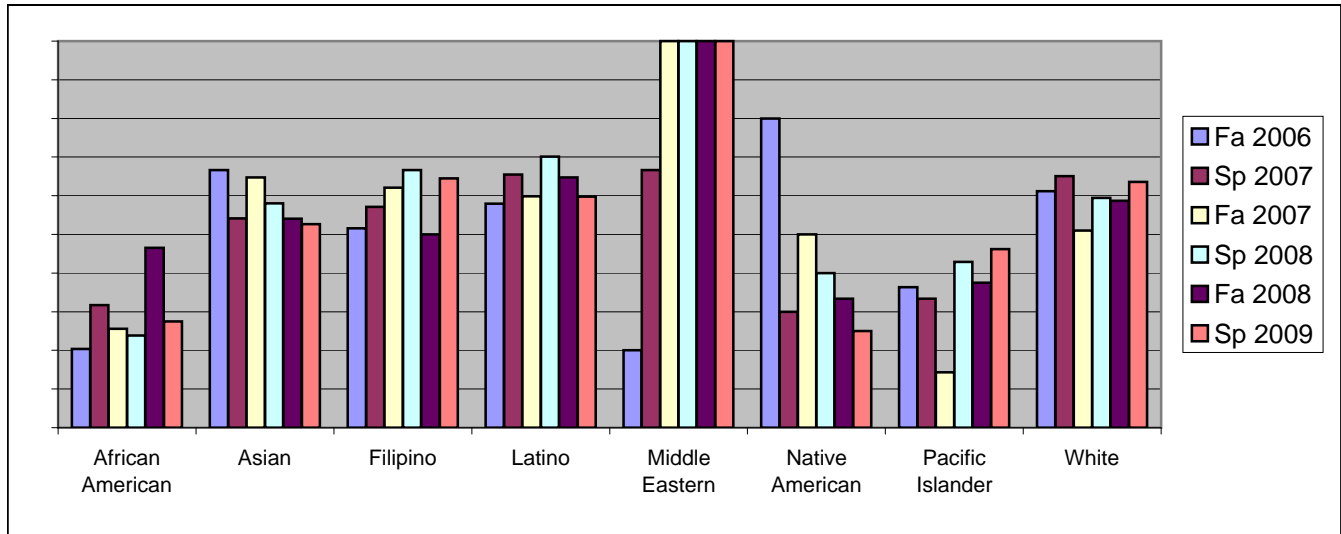
	Fa 2006	Sp 2007	Fa 2007	Sp 2008	Fa 2008	Sp 2009
Success	50%	56%	50%	53%	56%	52%
Non-Success	14%	7%	12%	17%	19%	16%
Withdrawal	36%	37%	37%	30%	25%	32%
Total Percent	100%	100%	100%	100%	100%	100%
Total Enrolled	<b>360</b>	<b>416</b>	<b>452</b>	<b>466</b>	<b>394</b>	<b>503</b>

Chabot  
Success Rates By Gender and Semester  
Discipline: SPAN



	Fa 2006	Sp 2007	Fa 2007	Sp 2008	Fa 2008	Sp 2009
<b>Men</b>						
Success	46%	46%	50%	45%	49%	45%
Non-Success	17%	9%	14%	20%	27%	16%
Withdrawal	37%	46%	36%	34%	25%	38%
Total Percent	100%	100%	100%	100%	100%	100%
Total Enrolled	<b>126</b>	<b>151</b>	<b>152</b>	<b>161</b>	<b>134</b>	<b>182</b>
<b>Women</b>						
Success	53%	62%	51%	58%	60%	56%
Non-Success	12%	6%	12%	14%	15%	16%
Withdrawal	36%	32%	38%	27%	25%	29%
Total Percent	100%	100%	100%	100%	100%	100%
Total Enrolled	<b>222</b>	<b>254</b>	<b>292</b>	<b>292</b>	<b>250</b>	<b>313</b>

Chabot  
Success Rates By Ethnicity and Semester  
Discipline: SPAN



	Fa 2006	Sp 2007	Fa 2007	Sp 2008	Fa 2008	Sp 2009
<b>African American</b>						
Success	20%	32%	26%	24%	47%	27%
Non-Success	14%	3%	23%	22%	26%	19%
Withdrawal	66%	65%	51%	54%	28%	54%
Total Percent	100%	100%	100%	100%	100%	100%
Total Enrolled	<b>59</b>	<b>63</b>	<b>90</b>	<b>105</b>	<b>58</b>	<b>91</b>
<b>Asian</b>						
Success	67%	54%	65%	58%	54%	53%
Non-Success	13%	13%	6%	13%	19%	11%
Withdrawal	20%	33%	29%	29%	27%	37%
Total Percent	100%	100%	100%	100%	100%	100%
Total Enrolled	<b>15</b>	<b>24</b>	<b>34</b>	<b>31</b>	<b>37</b>	<b>38</b>
<b>Filipino</b>						
Success	52%	57%	62%	67%	50%	65%
Non-Success	19%	18%	10%	11%	15%	13%
Withdrawal	29%	25%	28%	22%	35%	23%
Total Percent	100%	100%	100%	100%	100%	100%
Total Enrolled	<b>31</b>	<b>28</b>	<b>29</b>	<b>27</b>	<b>26</b>	<b>31</b>
<b>Latino</b>						
Success	58%	65%	60%	70%	65%	60%
Non-Success	13%	5%	8%	12%	15%	16%
Withdrawal	29%	29%	32%	18%	20%	25%
Total Percent	100%	100%	100%	100%	100%	100%
Total Enrolled	<b>119</b>	<b>139</b>	<b>137</b>	<b>127</b>	<b>139</b>	<b>179</b>
<b>Middle Eastern</b>						
Success	20%	67%	100%	100%	100%	100%
Non-Success	40%	0%	0%	0%	0%	0%
Withdrawal	40%	33%	0%	0%	0%	0%

Total Percent	100%	100%	100%	100%	100%	100%
Total Enrolled	<b>5</b>	<b>3</b>	<b>1</b>	<b>1</b>	<b>1</b>	<b>1</b>
<b>Native American</b>						
Success	80%	30%	50%	40%	33%	25%
Non-Success	20%	30%	17%	20%	0%	50%
Withdrawal	0%	40%	33%	40%	67%	25%
Total Percent	100%	100%	100%	100%	100%	100%
Total Enrolled	<b>5</b>	<b>10</b>	<b>6</b>	<b>5</b>	<b>3</b>	<b>4</b>
<b>Pacific Islander</b>						
Success	36%	33%	14%	43%	38%	46%
Non-Success	27%	33%	14%	0%	25%	15%
Withdrawal	36%	33%	71%	57%	38%	38%
Total Percent	100%	100%	100%	100%	100%	100%
Total Enrolled	<b>11</b>	<b>6</b>	<b>7</b>	<b>14</b>	<b>8</b>	<b>13</b>
<b>White</b>						
Success	61%	65%	51%	59%	59%	64%
Non-Success	11%	4%	8%	21%	17%	10%
Withdrawal	28%	31%	41%	20%	24%	26%
Total Percent	100%	100%	100%	100%	100%	100%
Total Enrolled	<b>85</b>	<b>103</b>	<b>104</b>	<b>101</b>	<b>75</b>	<b>96</b>