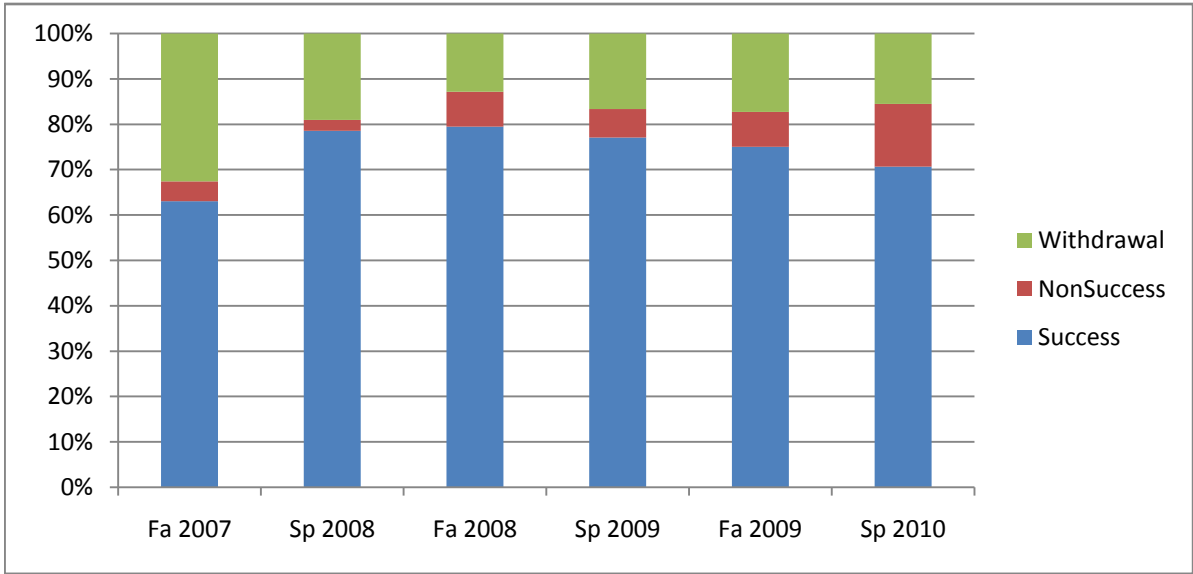
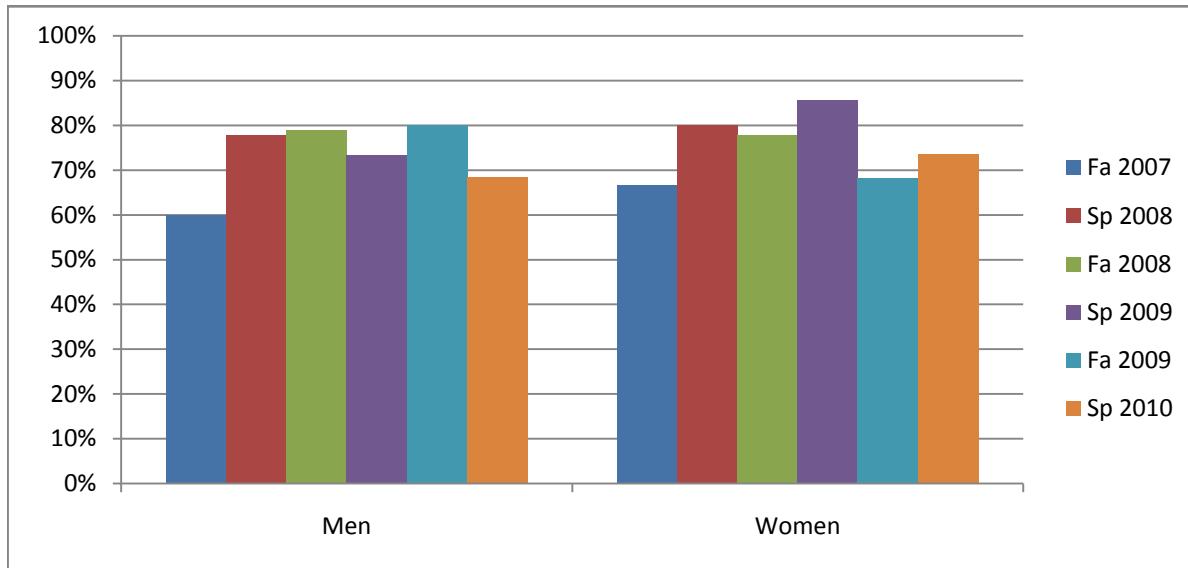


Chabot
 Success, Non-Success, and Withdrawal Rates By Semester
 Course: MUSL 4



| | Fa 2007 | Sp 2008 | Fa 2008 | Sp 2009 | Fa 2009 | Sp 2010 |
|----------------|-----------|-----------|-----------|-----------|-----------|-----------|
| Success | 63% | 79% | 79% | 77% | 75% | 71% |
| Non-Success | 4% | 2% | 8% | 6% | 8% | 14% |
| Withdrawal | 33% | 19% | 13% | 17% | 17% | 16% |
| Total Percent | 100% | 100% | 100% | 100% | 100% | 100% |
| Total Enrolled | 46 | 42 | 39 | 48 | 52 | 58 |

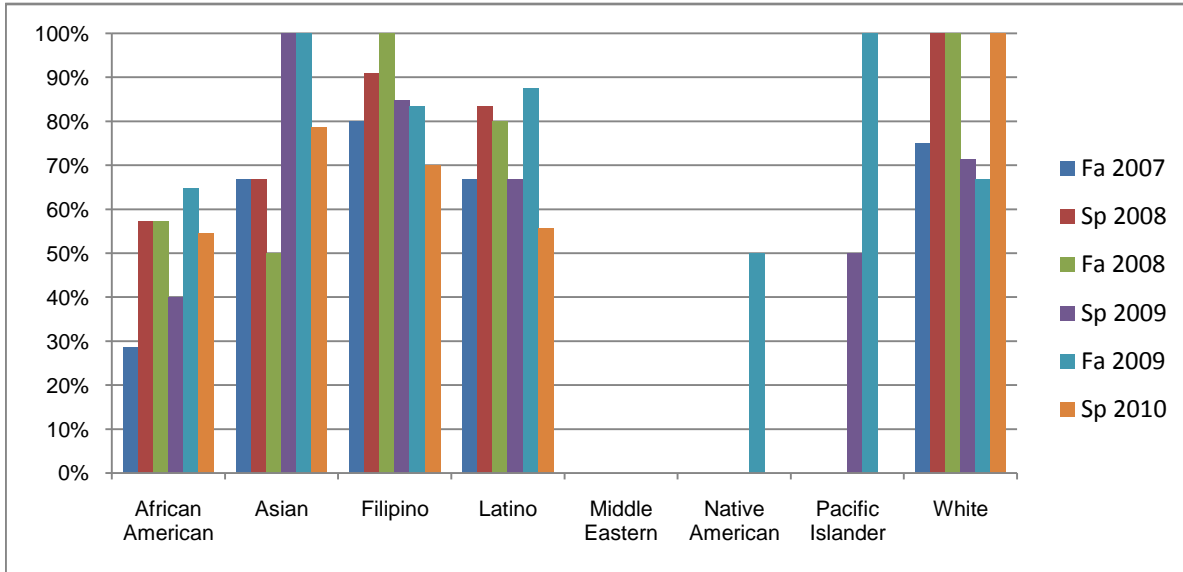
Chabot
Success Rates By Gender and Semester
Course: MUSL 4



| | Fa 2007 | Sp 2008 | Fa 2008 | Sp 2009 | Fa 2009 | Sp 2010 |
|----------------|-----------|-----------|-----------|-----------|-----------|-----------|
| Men | | | | | | |
| Success | 60% | 78% | 79% | 74% | 80% | 68% |
| Non-Success | 4% | 4% | 0% | 9% | 7% | 18% |
| Withdrawal | 36% | 19% | 21% | 18% | 13% | 13% |
| Total Percent | 100% | 100% | 100% | 100% | 100% | 100% |
| Total Enrolled | 25 | 27 | 19 | 34 | 30 | 38 |
| Women | | | | | | |
| Success | 67% | 80% | 78% | 86% | 68% | 74% |
| Non-Success | 5% | 0% | 17% | 0% | 9% | 5% |
| Withdrawal | 29% | 20% | 6% | 14% | 23% | 21% |
| Total Percent | 100% | 100% | 100% | 100% | 100% | 100% |
| Total Enrolled | 21 | 15 | 18 | 14 | 22 | 19 |

Ethnicity_Totals_Course

Chabot
Success Rates By Ethnicity and Semester
Course: MUSL 4



| | Fa 2007 | Sp 2008 | Fa 2008 | Sp 2009 | Fa 2009 | Sp 2010 |
|-------------------------|-----------|-----------|-----------|-----------|-----------|-----------|
| African American | | | | | | |
| Success | 29% | 57% | 57% | 40% | 65% | 55% |
| Non-Success | 0% | 0% | 0% | 20% | 6% | 0% |
| Withdrawal | 71% | 43% | 43% | 40% | 29% | 45% |
| Total Percent | 100% | 100% | 100% | 100% | 100% | 100% |
| Total Enrolled | 7 | 7 | 7 | 5 | 17 | 11 |
| Asian | | | | | | |
| Success | 67% | 67% | 50% | 100% | 100% | 79% |
| Non-Success | 0% | 11% | 25% | 0% | 0% | 14% |
| Withdrawal | 33% | 22% | 25% | 0% | 0% | 7% |
| Total Percent | 100% | 100% | 100% | 100% | 100% | 100% |
| Total Enrolled | 12 | 9 | 4 | 9 | 8 | 14 |
| Filipino | | | | | | |
| Success | 80% | 91% | 100% | 85% | 83% | 70% |
| Non-Success | 0% | 0% | 0% | 8% | 17% | 20% |
| Withdrawal | 20% | 9% | 0% | 8% | 0% | 10% |
| Total Percent | 100% | 100% | 100% | 100% | 100% | 100% |
| Total Enrolled | 5 | 11 | 5 | 13 | 6 | 10 |
| Latino | | | | | | |
| Success | 67% | 83% | 80% | 67% | 88% | 56% |
| Non-Success | 0% | 0% | 13% | 0% | 13% | 33% |
| Withdrawal | 33% | 17% | 7% | 33% | 0% | 11% |
| Total Percent | 100% | 100% | 100% | 100% | 100% | 100% |
| Total Enrolled | 9 | 6 | 15 | 6 | 8 | 9 |
| Middle Eastern | | | | | | |
| Success | 0% | 0% | 0% | 0% | 0% | 0% |
| Non-Success | 100% | 0% | 0% | 0% | 0% | 0% |
| Withdrawal | 0% | 0% | 0% | 0% | 0% | 0% |

Ethnicity_Totals_Course

| | | | | | | |
|-------------------------|----------|----------|----------|----------|----------|----------|
| Total Percent | 100% | 0% | 0% | 0% | 0% | 0% |
| Total Enrolled | 1 | 0 | 0 | 0 | 0 | 0 |
| Native American | | | | | | |
| Success | 0% | 0% | 0% | 0% | 50% | 0% |
| Non-Success | 0% | 0% | 0% | 0% | 0% | 0% |
| Withdrawal | 0% | 0% | 0% | 0% | 50% | 0% |
| Total Percent | 0% | 0% | 0% | 0% | 100% | 0% |
| Total Enrolled | 0 | 0 | 0 | 0 | 2 | 0 |
| Pacific Islander | | | | | | |
| Success | 0% | 0% | 0% | 50% | 100% | 0% |
| Non-Success | 0% | 0% | 0% | 0% | 0% | 50% |
| Withdrawal | 100% | 0% | 0% | 50% | 0% | 50% |
| Total Percent | 100% | 0% | 0% | 100% | 100% | 100% |
| Total Enrolled | 1 | 0 | 0 | 2 | 1 | 2 |
| White | | | | | | |
| Success | 75% | 100% | 100% | 71% | 67% | 100% |
| Non-Success | 13% | 0% | 0% | 0% | 0% | 0% |
| Withdrawal | 13% | 0% | 0% | 29% | 33% | 0% |
| Total Percent | 100% | 100% | 100% | 100% | 100% | 100% |
| Total Enrolled | 8 | 7 | 5 | 7 | 6 | 9 |