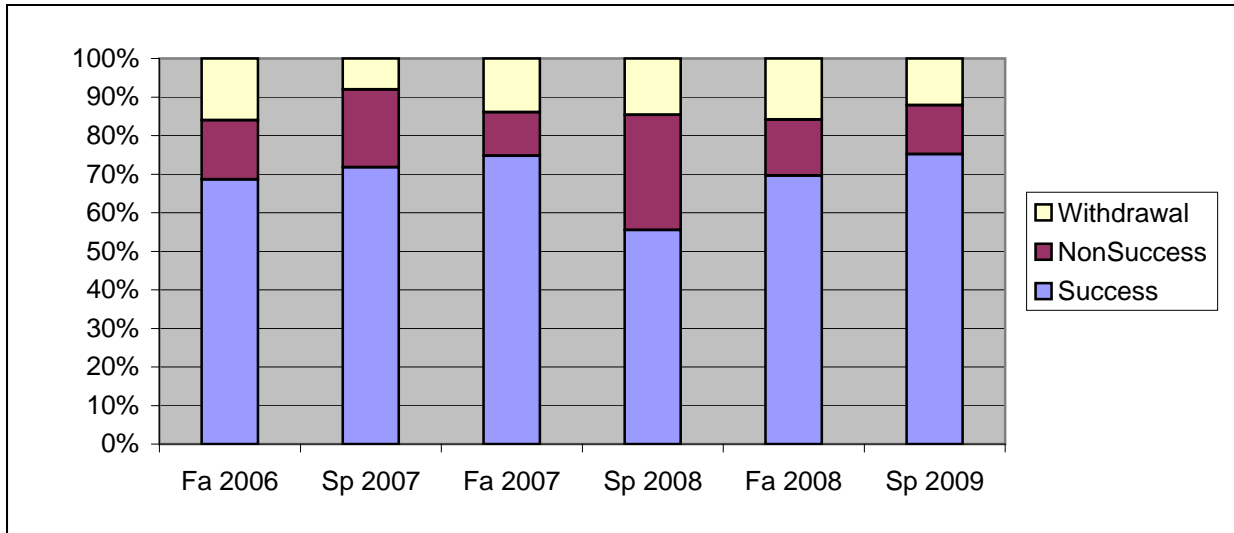
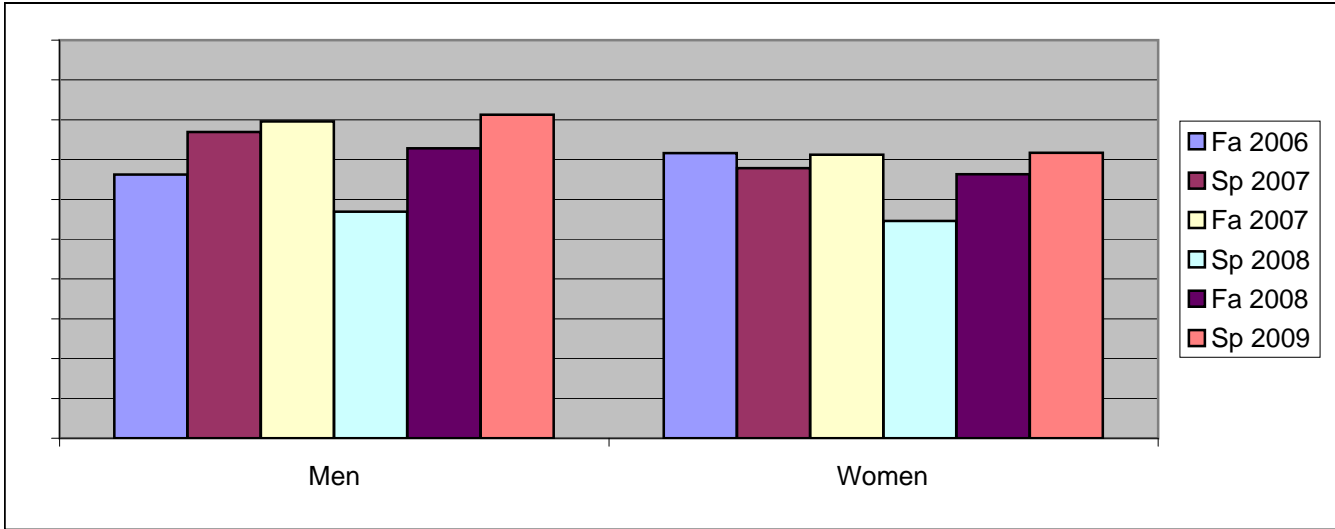


Chabot
 Success, Non-Success, and Withdrawal Rates By Semester
 Course: BIOL 10



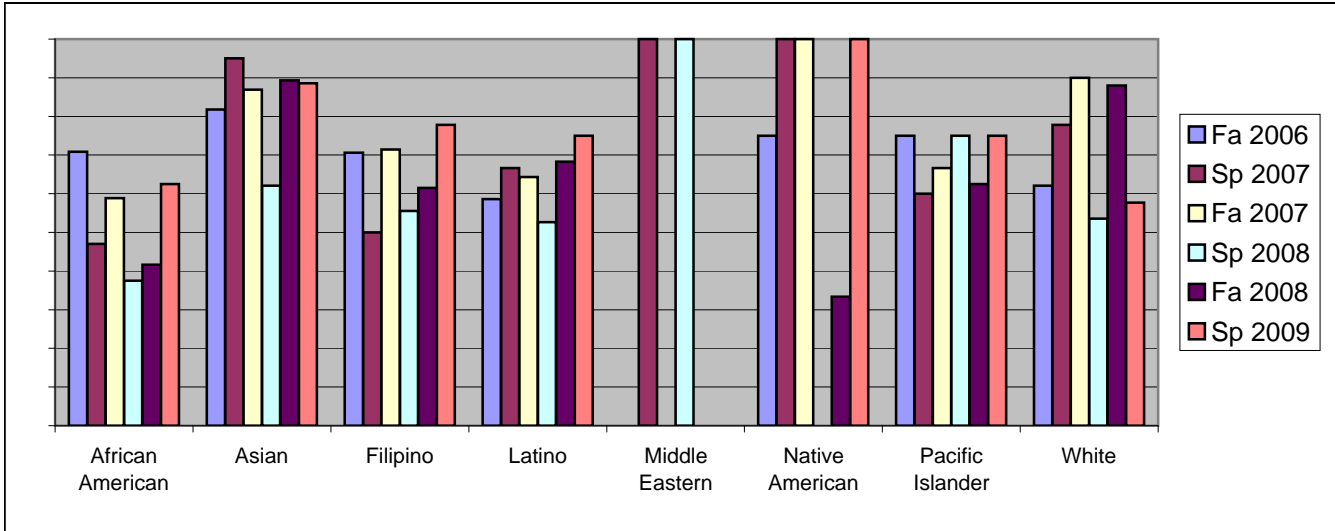
| | Fa 2006 | Sp 2007 | Fa 2007 | Sp 2008 | Fa 2008 | Sp 2009 |
|----------------|------------|------------|------------|------------|------------|------------|
| Success | 69% | 72% | 75% | 56% | 70% | 75% |
| Non-Success | 15% | 20% | 11% | 30% | 15% | 13% |
| Withdrawal | 16% | 8% | 14% | 15% | 16% | 12% |
| Total Percent | 100% | 100% | 100% | 100% | 100% | 100% |
| Total Enrolled | 156 | 149 | 115 | 144 | 158 | 165 |

Chabot
Success Rates By Gender and Semester
Course: BIOL 10



| | Fa 2006 | Sp 2007 | Fa 2007 | Sp 2008 | Fa 2008 | Sp 2009 |
|----------------|-----------|-----------|-----------|-----------|-----------|-----------|
| Men | | | | | | |
| Success | 66% | 77% | 80% | 57% | 73% | 81% |
| Non-Success | 18% | 17% | 12% | 37% | 13% | 6% |
| Withdrawal | 16% | 6% | 8% | 6% | 14% | 13% |
| Total Percent | 100% | 100% | 100% | 100% | 100% | 100% |
| Total Enrolled | 74 | 65 | 49 | 65 | 70 | 64 |
| Women | | | | | | |
| Success | 72% | 68% | 71% | 55% | 66% | 72% |
| Non-Success | 14% | 23% | 11% | 23% | 16% | 16% |
| Withdrawal | 15% | 10% | 18% | 22% | 17% | 12% |
| Total Percent | 100% | 100% | 100% | 100% | 100% | 100% |
| Total Enrolled | 81 | 84 | 66 | 77 | 86 | 99 |

Chabot
Success Rates By Ethnicity and Semester
Course: BIOL 10



| | Fa 2006 | Sp 2007 | Fa 2007 | Sp 2008 | Fa 2008 | Sp 2009 |
|-------------------------|-----------|-----------|-----------|-----------|-----------|-----------|
| African American | | | | | | |
| Success | 71% | 47% | 59% | 38% | 42% | 63% |
| Non-Success | 13% | 41% | 24% | 44% | 33% | 25% |
| Withdrawal | 17% | 12% | 18% | 19% | 25% | 13% |
| Total Percent | 100% | 100% | 100% | 100% | 100% | 100% |
| Total Enrolled | 24 | 17 | 17 | 16 | 24 | 24 |
| Asian | | | | | | |
| Success | 82% | 95% | 87% | 62% | 89% | 89% |
| Non-Success | 6% | 3% | 4% | 28% | 7% | 3% |
| Withdrawal | 12% | 3% | 9% | 10% | 4% | 9% |
| Total Percent | 100% | 100% | 100% | 100% | 100% | 100% |
| Total Enrolled | 33 | 40 | 23 | 29 | 28 | 35 |
| Filipino | | | | | | |
| Success | 71% | 50% | 71% | 56% | 62% | 78% |
| Non-Success | 18% | 50% | 0% | 44% | 15% | 17% |
| Withdrawal | 12% | 0% | 29% | 0% | 23% | 6% |
| Total Percent | 100% | 100% | 100% | 100% | 100% | 100% |
| Total Enrolled | 17 | 14 | 14 | 9 | 13 | 18 |
| Latino | | | | | | |
| Success | 59% | 67% | 64% | 53% | 68% | 75% |
| Non-Success | 24% | 15% | 18% | 29% | 22% | 14% |
| Withdrawal | 17% | 18% | 18% | 18% | 10% | 11% |
| Total Percent | 100% | 100% | 100% | 100% | 100% | 100% |
| Total Enrolled | 29 | 33 | 28 | 38 | 41 | 44 |
| Middle Eastern | | | | | | |
| Success | 0% | 100% | 0% | 100% | 0% | 0% |
| Non-Success | 0% | 0% | 0% | 0% | 0% | 0% |
| Withdrawal | 0% | 0% | 0% | 0% | 0% | 0% |
| Total Percent | 0% | 100% | 0% | 100% | 0% | 0% |
| Total Enrolled | 0 | 2 | 0 | 1 | 0 | 0 |
| Native American | | | | | | |

| | | | | | | |
|-------------------------|-----------|-----------|-----------|-----------|-----------|-----------|
| Success | 75% | 100% | 100% | 0% | 33% | 100% |
| Non-Success | 0% | 0% | 0% | 0% | 33% | 0% |
| Withdrawal | 25% | 0% | 0% | 100% | 33% | 0% |
| Total Percent | 100% | 100% | 100% | 100% | 100% | 100% |
| Total Enrolled | 4 | 1 | 1 | 1 | 3 | 1 |
| Pacific Islander | | | | | | |
| Success | 75% | 60% | 67% | 75% | 63% | 75% |
| Non-Success | 25% | 20% | 33% | 0% | 13% | 0% |
| Withdrawal | 0% | 20% | 0% | 25% | 25% | 25% |
| Total Percent | 100% | 100% | 100% | 100% | 100% | 100% |
| Total Enrolled | 4 | 5 | 3 | 4 | 8 | 4 |
| White | | | | | | |
| Success | 62% | 78% | 90% | 54% | 88% | 58% |
| Non-Success | 17% | 22% | 0% | 36% | 0% | 15% |
| Withdrawal | 21% | 0% | 10% | 11% | 12% | 27% |
| Total Percent | 100% | 100% | 100% | 100% | 100% | 100% |
| Total Enrolled | 29 | 18 | 20 | 28 | 25 | 26 |