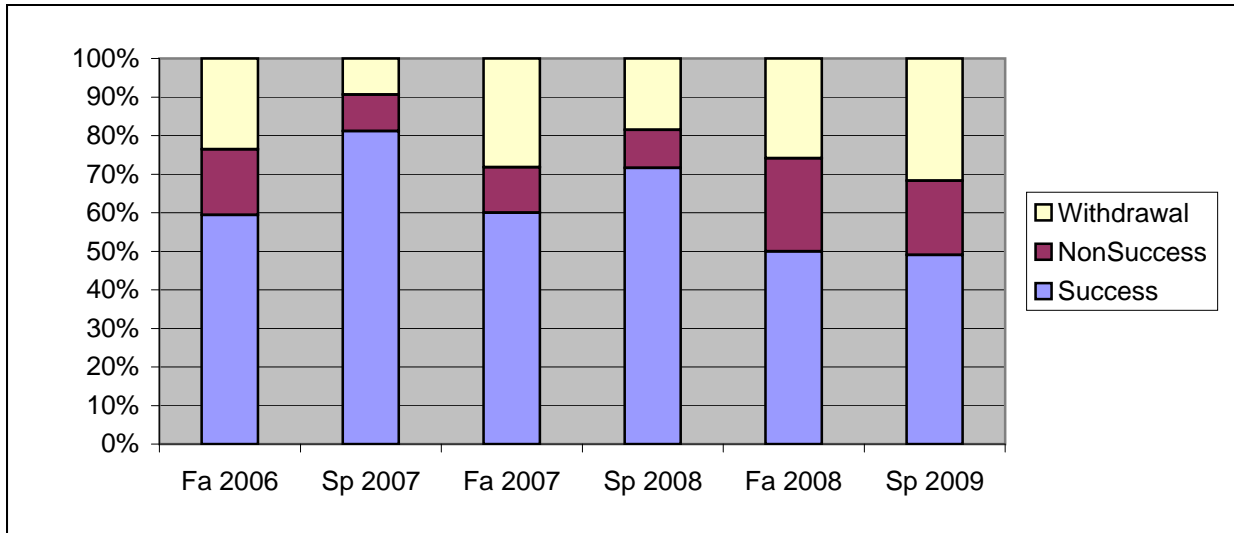
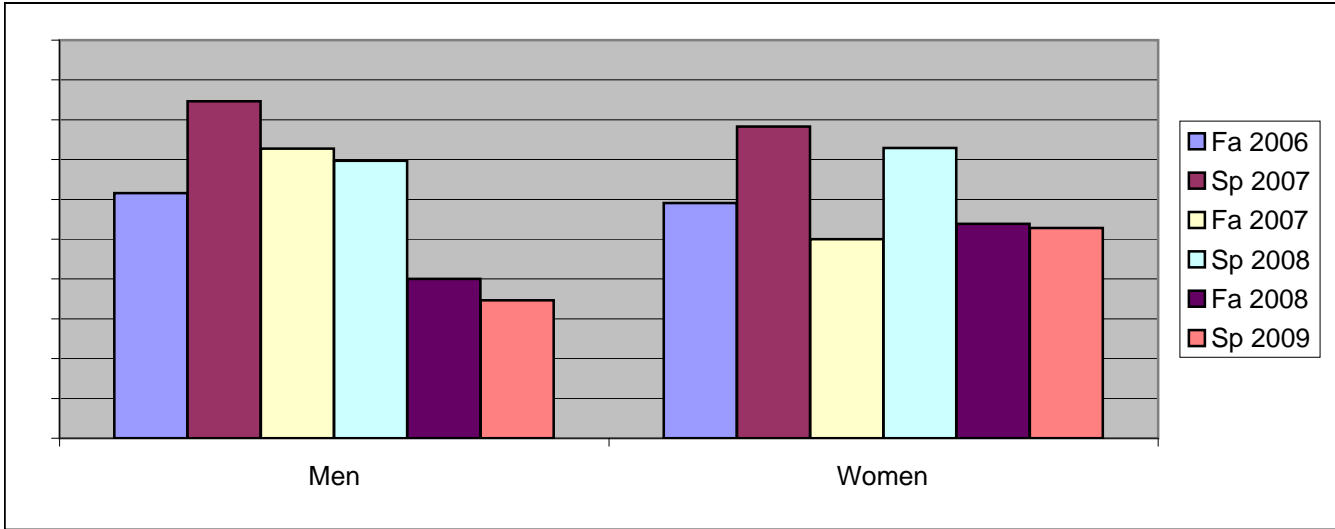


Chabot
 Success, Non-Success, and Withdrawal Rates By Semester
 Course: BIOL 50



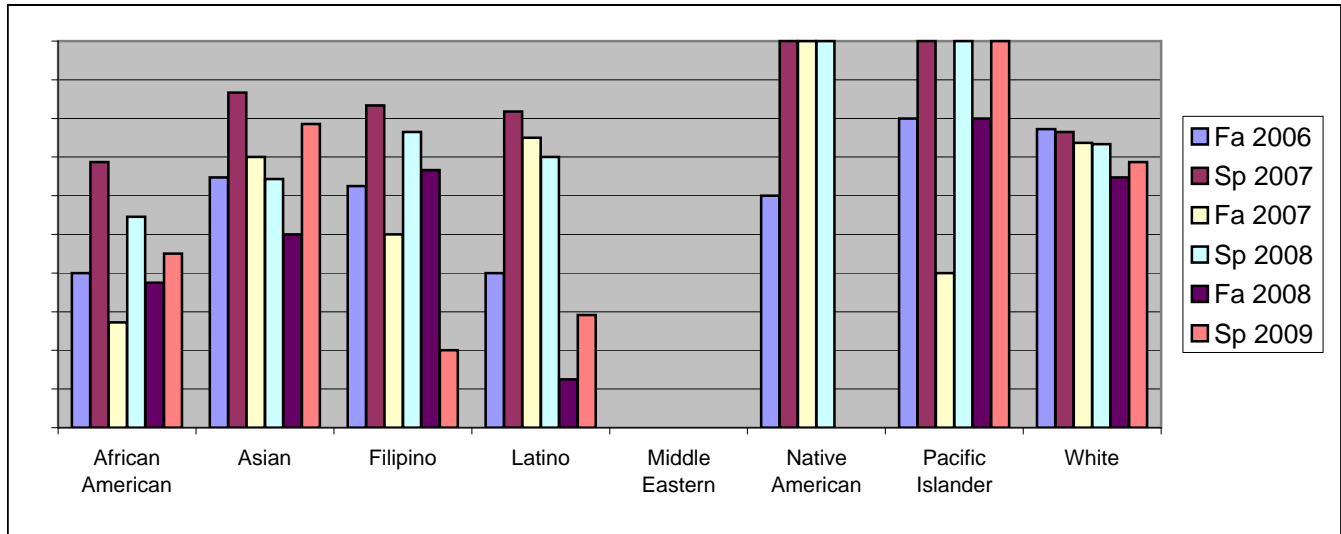
	Fa 2006	Sp 2007	Fa 2007	Sp 2008	Fa 2008	Sp 2009
Success	59%	81%	60%	72%	50%	49%
Non-Success	17%	9%	12%	10%	24%	19%
Withdrawal	24%	9%	28%	19%	26%	32%
Total Percent	100%	100%	100%	100%	100%	100%
Total Enrolled	106	85	85	81	54	104

Chabot
Success Rates By Gender and Semester
Course: BIOL 50



	Fa 2006	Sp 2007	Fa 2007	Sp 2008	Fa 2008	Sp 2009
Men						
Success	62%	85%	73%	70%	40%	35%
Non-Success	13%	8%	9%	15%	27%	15%
Withdrawal	26%	8%	18%	15%	33%	50%
Total Percent	100%	100%	100%	100%	100%	100%
Total Enrolled	39	39	33	33	15	26
Women						
Success	59%	78%	50%	73%	54%	53%
Non-Success	18%	11%	14%	6%	23%	19%
Withdrawal	23%	11%	36%	21%	23%	28%
Total Percent	100%	100%	100%	100%	100%	100%
Total Enrolled	66	46	50	48	39	72

Chabot
Success Rates By Ethnicity and Semester
Course: BIOL 50



	Fa 2006	Sp 2007	Fa 2007	Sp 2008	Fa 2008	Sp 2009
African American						
Success	40%	69%	27%	55%	38%	45%
Non-Success	33%	13%	27%	18%	38%	30%
Withdrawal	27%	19%	45%	27%	25%	25%
Total Percent	100%	100%	100%	100%	100%	100%
Total Enrolled	15	16	11	11	8	20
Asian						
Success	65%	87%	70%	64%	50%	79%
Non-Success	6%	7%	10%	14%	25%	14%
Withdrawal	29%	7%	20%	21%	25%	7%
Total Percent	100%	100%	100%	100%	100%	100%
Total Enrolled	17	15	10	14	8	14
Filipino						
Success	63%	83%	50%	76%	67%	20%
Non-Success	6%	17%	17%	0%	17%	7%
Withdrawal	31%	0%	33%	24%	17%	73%
Total Percent	100%	100%	100%	100%	100%	100%
Total Enrolled	16	12	12	17	6	15
Latino						
Success	40%	82%	75%	70%	13%	29%
Non-Success	47%	9%	0%	10%	38%	25%
Withdrawal	13%	9%	25%	20%	50%	46%
Total Percent	100%	100%	100%	100%	100%	100%
Total Enrolled	15	11	16	10	8	24
Middle Eastern						
Success	0%	0%	0%	0%	0%	0%
Non-Success	0%	0%	0%	0%	0%	0%
Withdrawal	0%	0%	0%	0%	0%	0%

Total Percent	0%	0%	0%	0%	0%	0%
Total Enrolled	0	0	0	0	0	0
Native American						
Success	60%	100%	100%	100%	0%	0%
Non-Success	20%	0%	0%	0%	0%	0%
Withdrawal	20%	0%	0%	0%	0%	0%
Total Percent	100%	100%	100%	100%	0%	0%
Total Enrolled	5	1	1	1	0	0
Pacific Islander						
Success	80%	100%	40%	100%	80%	100%
Non-Success	0%	0%	0%	0%	0%	0%
Withdrawal	20%	0%	60%	0%	20%	0%
Total Percent	100%	100%	100%	100%	100%	100%
Total Enrolled	5	6	5	2	5	1
White						
Success	77%	76%	74%	73%	65%	69%
Non-Success	5%	6%	11%	13%	18%	19%
Withdrawal	18%	18%	16%	13%	18%	13%
Total Percent	100%	100%	100%	100%	100%	100%
Total Enrolled	22	17	19	15	17	16