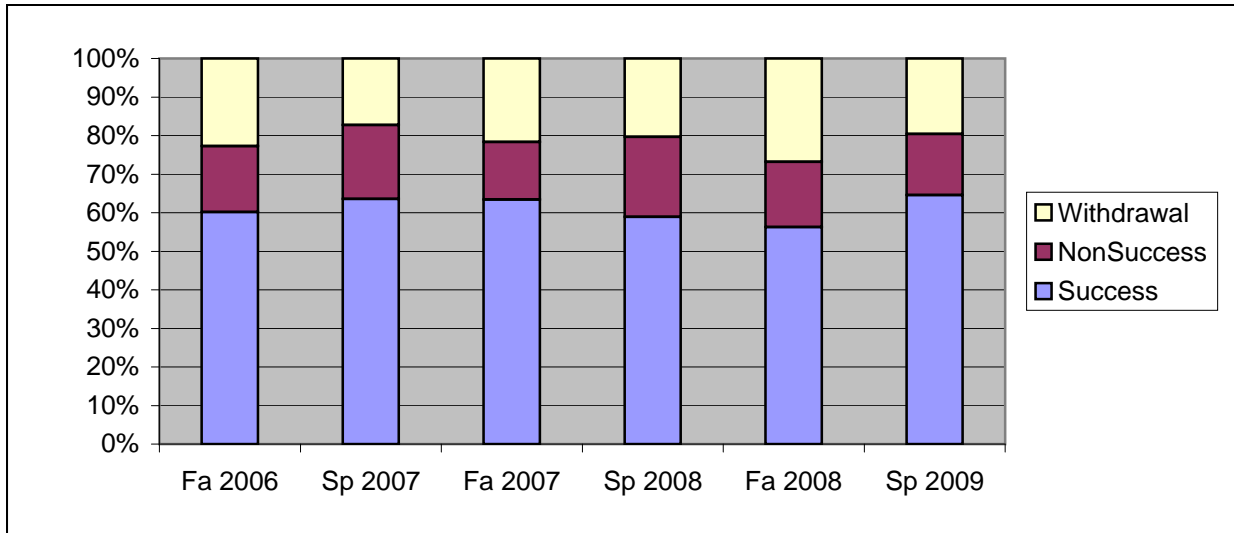
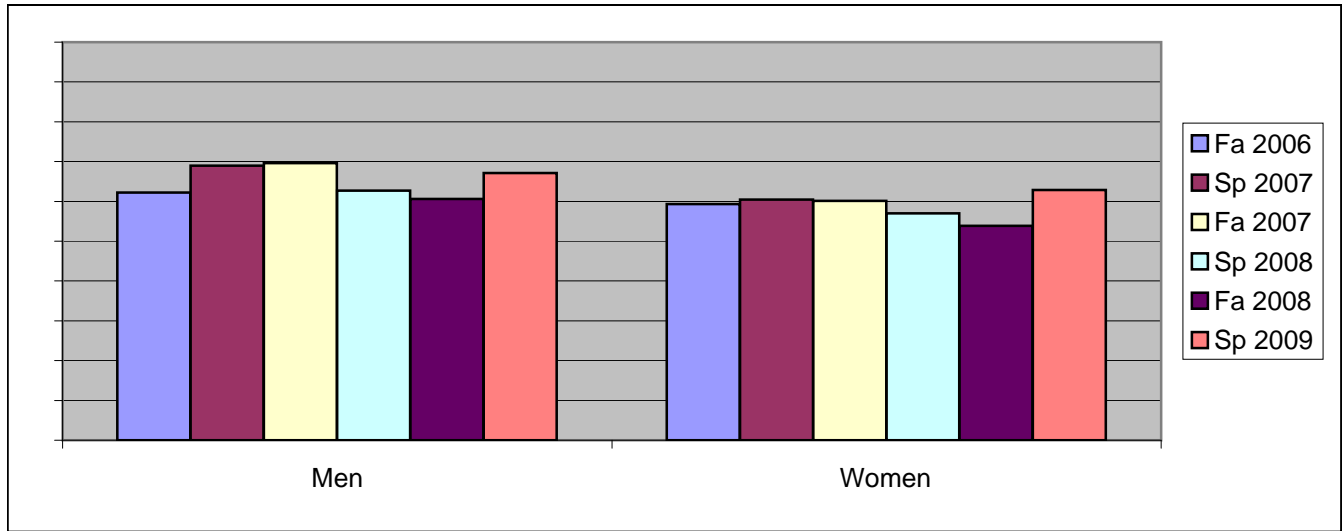


Chabot
 Success, Non-Success, and Withdrawal Rates By Semester
 Discipline: BIOL



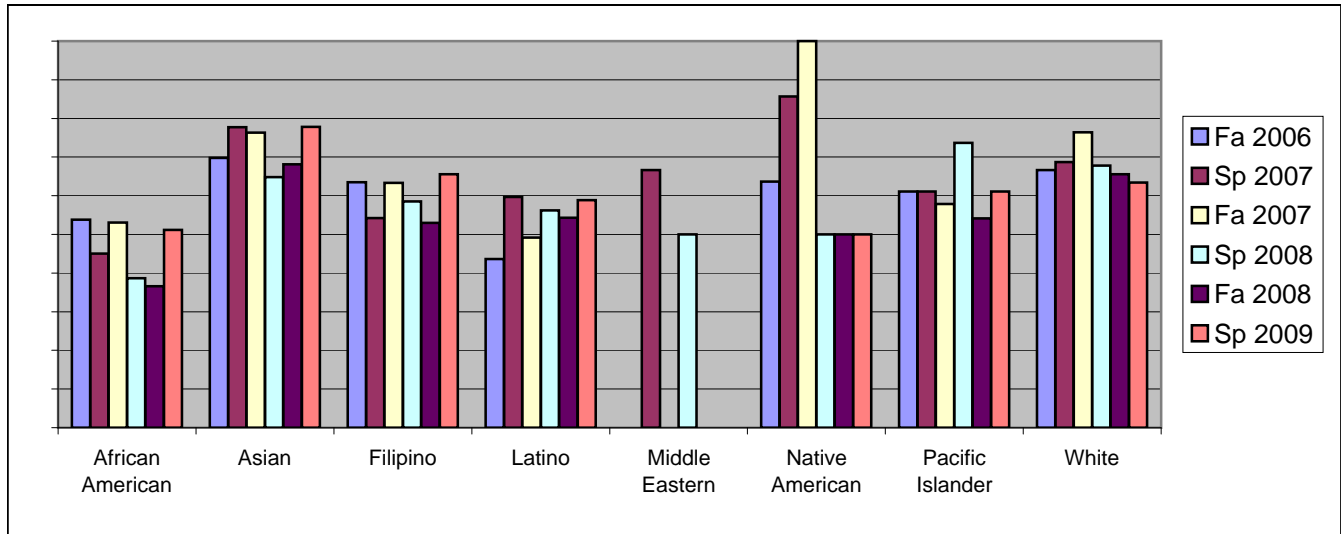
	Fa 2006	Sp 2007	Fa 2007	Sp 2008	Fa 2008	Sp 2009
Success	60%	64%	63%	59%	56%	65%
Non-Success	17%	19%	15%	21%	17%	16%
Withdrawal	23%	17%	22%	20%	27%	20%
Total Percent	100%	100%	100%	100%	100%	100%
Total Enrolled	633	632	577	614	590	607

Chabot
Success Rates By Gender and Semester
Discipline: BIOL



	Fa 2006	Sp 2007	Fa 2007	Sp 2008	Fa 2008	Sp 2009
Men						
Success	62%	69%	70%	63%	61%	67%
Non-Success	17%	19%	13%	24%	13%	11%
Withdrawal	20%	13%	18%	13%	27%	21%
Total Percent	100%	100%	100%	100%	100%	100%
Total Enrolled	225	232	194	209	221	219
Women						
Success	59%	60%	60%	57%	54%	63%
Non-Success	16%	20%	16%	19%	20%	18%
Withdrawal	24%	20%	24%	24%	26%	19%
Total Percent	100%	100%	100%	100%	100%	100%
Total Enrolled	401	397	379	400	360	377

Chabot
Success Rates By Ethnicity and Semester
Discipline: BIOL



	Fa 2006	Sp 2007	Fa 2007	Sp 2008	Fa 2008	Sp 2009
African American						
Success	54%	45%	53%	39%	37%	51%
Non-Success	23%	24%	17%	33%	27%	24%
Withdrawal	23%	31%	30%	28%	37%	25%
Total Percent	100%	100%	100%	100%	100%	100%
Total Enrolled	78	71	66	88	71	84
Asian						
Success	70%	78%	76%	65%	68%	78%
Non-Success	14%	14%	11%	19%	12%	10%
Withdrawal	17%	8%	13%	16%	20%	13%
Total Percent	100%	100%	100%	100%	100%	100%
Total Enrolled	139	148	114	142	138	126
Filipino						
Success	63%	54%	63%	59%	53%	66%
Non-Success	15%	32%	14%	23%	20%	16%
Withdrawal	21%	14%	23%	18%	27%	19%
Total Percent	100%	100%	100%	100%	100%	100%
Total Enrolled	104	107	109	94	83	90
Latino						
Success	44%	60%	49%	56%	54%	59%
Non-Success	22%	14%	25%	21%	19%	20%
Withdrawal	35%	27%	25%	23%	27%	21%
Total Percent	100%	100%	100%	100%	100%	100%
Total Enrolled	110	139	122	121	129	136
Middle Eastern						
Success	0%	67%	0%	50%	0%	0%
Non-Success	0%	0%	0%	0%	0%	0%
Withdrawal	100%	33%	0%	50%	0%	0%

Total Percent	100%	100%	0%	100%	0%	0%
Total Enrolled	1	3	0	2	0	0
Native American						
Success	64%	86%	100%	50%	50%	50%
Non-Success	9%	14%	0%	0%	17%	0%
Withdrawal	27%	0%	0%	50%	33%	50%
Total Percent	100%	100%	100%	100%	100%	100%
Total Enrolled	11	7	4	4	6	4
Pacific Islander						
Success	61%	61%	58%	74%	54%	61%
Non-Success	22%	28%	5%	5%	17%	0%
Withdrawal	17%	11%	37%	21%	29%	39%
Total Percent	100%	100%	100%	100%	100%	100%
Total Enrolled	18	18	19	19	24	18
White						
Success	67%	69%	76%	68%	66%	63%
Non-Success	13%	16%	9%	16%	14%	16%
Withdrawal	21%	16%	15%	17%	20%	20%
Total Percent	100%	100%	100%	100%	100%	100%
Total Enrolled	111	83	89	90	93	93