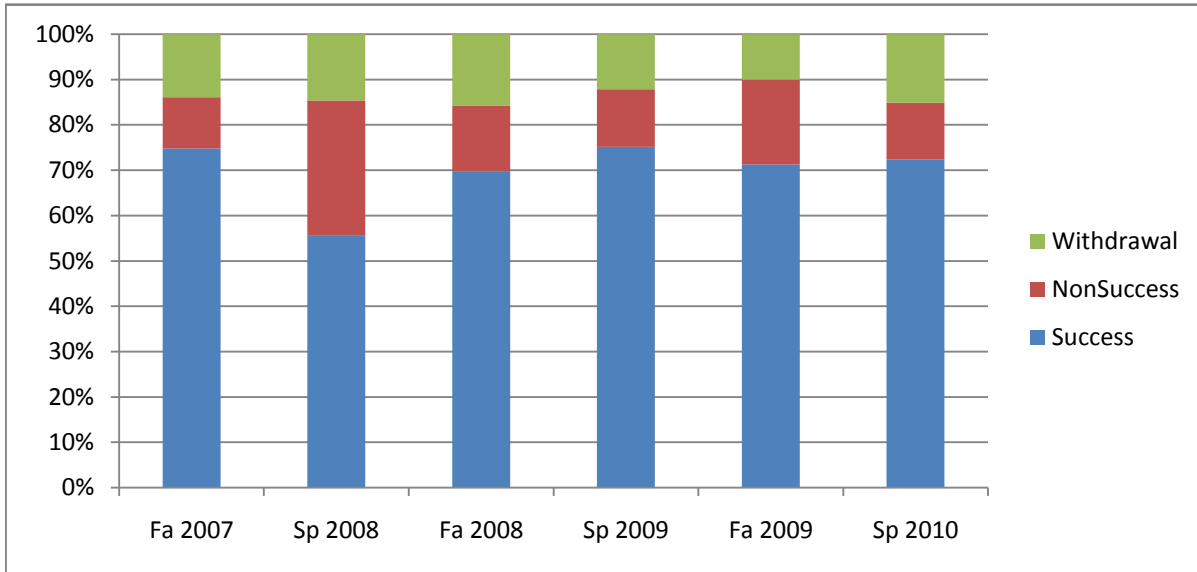
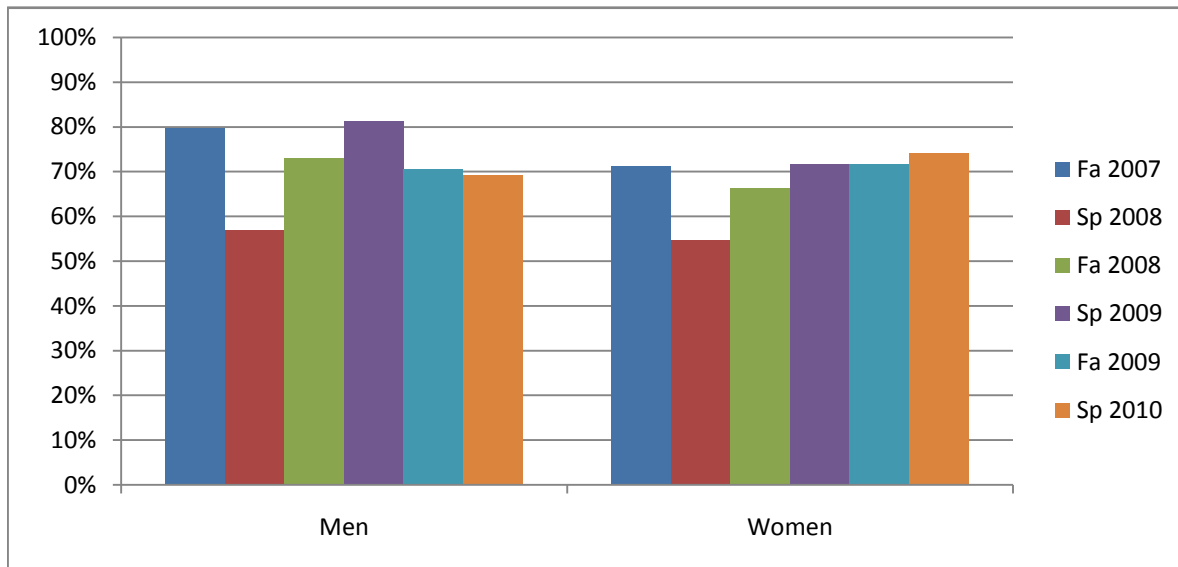


Chabot  
 Success, Non-Success, and Withdrawal Rates By Semester  
 Course: BIOL 10



	Fa 2007	Sp 2008	Fa 2008	Sp 2009	Fa 2009	Sp 2010
Success	75%	56%	70%	75%	71%	72%
Non-Success	11%	30%	15%	13%	19%	13%
Withdrawal	14%	15%	16%	12%	10%	15%
Total Percent	100%	100%	100%	100%	100%	100%
Total Enrolled	<b>115</b>	<b>144</b>	<b>158</b>	<b>165</b>	<b>160</b>	<b>159</b>

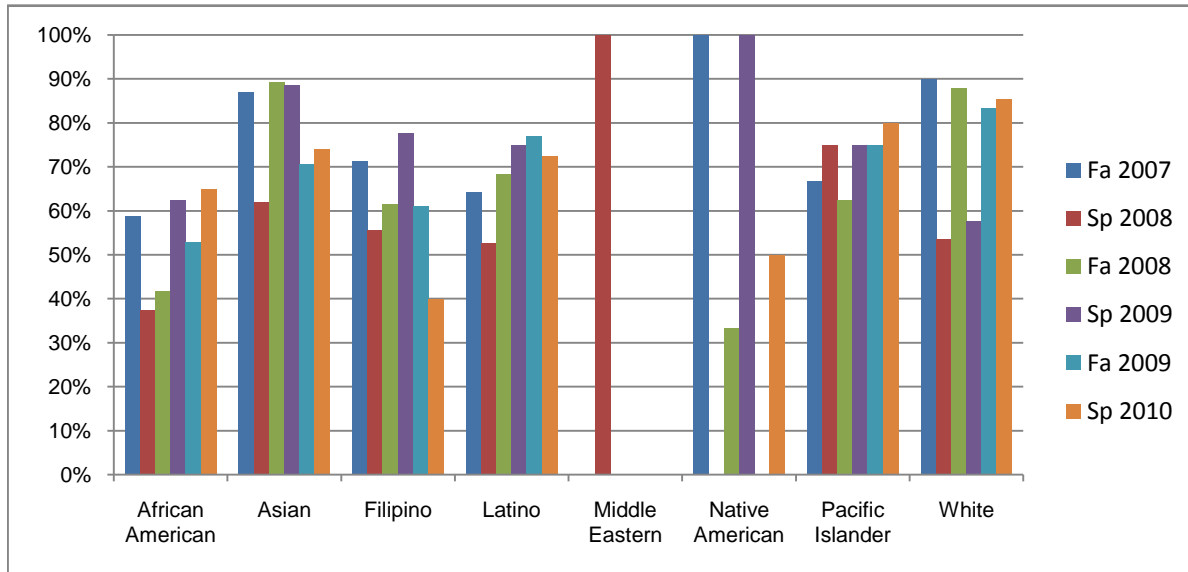
Chabot  
Success Rates By Gender and Semester  
Course: BIOL 10



	Fa 2007	Sp 2008	Fa 2008	Sp 2009	Fa 2009	Sp 2010
<b>Men</b>						
Success	80%	57%	73%	81%	70%	69%
Non-Success	12%	37%	13%	6%	18%	11%
Withdrawal	8%	6%	14%	13%	11%	20%
Total Percent	100%	100%	100%	100%	100%	100%
Total Enrolled	<b>49</b>	<b>65</b>	<b>70</b>	<b>64</b>	<b>61</b>	<b>65</b>
<b>Women</b>						
Success	71%	55%	66%	72%	72%	74%
Non-Success	11%	23%	16%	16%	20%	14%
Withdrawal	18%	22%	17%	12%	8%	12%
Total Percent	100%	100%	100%	100%	100%	100%
Total Enrolled	<b>66</b>	<b>77</b>	<b>86</b>	<b>99</b>	<b>95</b>	<b>93</b>

Ethnicity\_Totals\_Course

Chabot  
Success Rates By Ethnicity and Semester  
Course: BIOL 10



	Fa 2007	Sp 2008	Fa 2008	Sp 2009	Fa 2009	Sp 2010
<b>African American</b>						
Success	59%	38%	42%	63%	53%	65%
Non-Success	24%	44%	33%	25%	29%	15%
Withdrawal	18%	19%	25%	13%	18%	20%
Total Percent	100%	100%	100%	100%	100%	100%
Total Enrolled	<b>17</b>	<b>16</b>	<b>24</b>	<b>24</b>	<b>17</b>	<b>20</b>
<b>Asian</b>						
Success	87%	62%	89%	89%	71%	74%
Non-Success	4%	28%	7%	3%	24%	15%
Withdrawal	9%	10%	4%	9%	6%	11%
Total Percent	100%	100%	100%	100%	100%	100%
Total Enrolled	<b>23</b>	<b>29</b>	<b>28</b>	<b>35</b>	<b>34</b>	<b>27</b>
<b>Filipino</b>						
Success	71%	56%	62%	78%	61%	40%
Non-Success	0%	44%	15%	17%	28%	20%
Withdrawal	29%	0%	23%	6%	11%	40%
Total Percent	100%	100%	100%	100%	100%	100%
Total Enrolled	<b>14</b>	<b>9</b>	<b>13</b>	<b>18</b>	<b>18</b>	<b>10</b>
<b>Latino</b>						
Success	64%	53%	68%	75%	77%	72%
Non-Success	18%	29%	22%	14%	8%	11%
Withdrawal	18%	18%	10%	11%	15%	17%
Total Percent	100%	100%	100%	100%	100%	100%
Total Enrolled	<b>28</b>	<b>38</b>	<b>41</b>	<b>44</b>	<b>39</b>	<b>47</b>
<b>Middle Eastern</b>						
Success	0%	100%	0%	0%	0%	0%
Non-Success	0%	0%	0%	0%	0%	0%
Withdrawal	0%	0%	0%	0%	0%	0%

Ethnicity\_Totals\_Course

Total Percent	0%	100%	0%	0%	0%	0%
Total Enrolled	<b>0</b>	<b>1</b>	<b>0</b>	<b>0</b>	<b>0</b>	<b>0</b>
<b>Native American</b>						
Success	100%	0%	33%	100%	0%	50%
Non-Success	0%	0%	33%	0%	100%	0%
Withdrawal	0%	100%	33%	0%	0%	50%
Total Percent	100%	100%	100%	100%	100%	100%
Total Enrolled	<b>1</b>	<b>1</b>	<b>3</b>	<b>1</b>	<b>1</b>	<b>2</b>
<b>Pacific Islander</b>						
Success	67%	75%	63%	75%	75%	80%
Non-Success	33%	0%	13%	0%	25%	20%
Withdrawal	0%	25%	25%	25%	0%	0%
Total Percent	100%	100%	100%	100%	100%	100%
Total Enrolled	<b>3</b>	<b>4</b>	<b>8</b>	<b>4</b>	<b>8</b>	<b>5</b>
<b>White</b>						
Success	90%	54%	88%	58%	83%	85%
Non-Success	0%	36%	0%	15%	13%	9%
Withdrawal	10%	11%	12%	27%	4%	6%
Total Percent	100%	100%	100%	100%	100%	100%
Total Enrolled	<b>20</b>	<b>28</b>	<b>25</b>	<b>26</b>	<b>24</b>	<b>34</b>