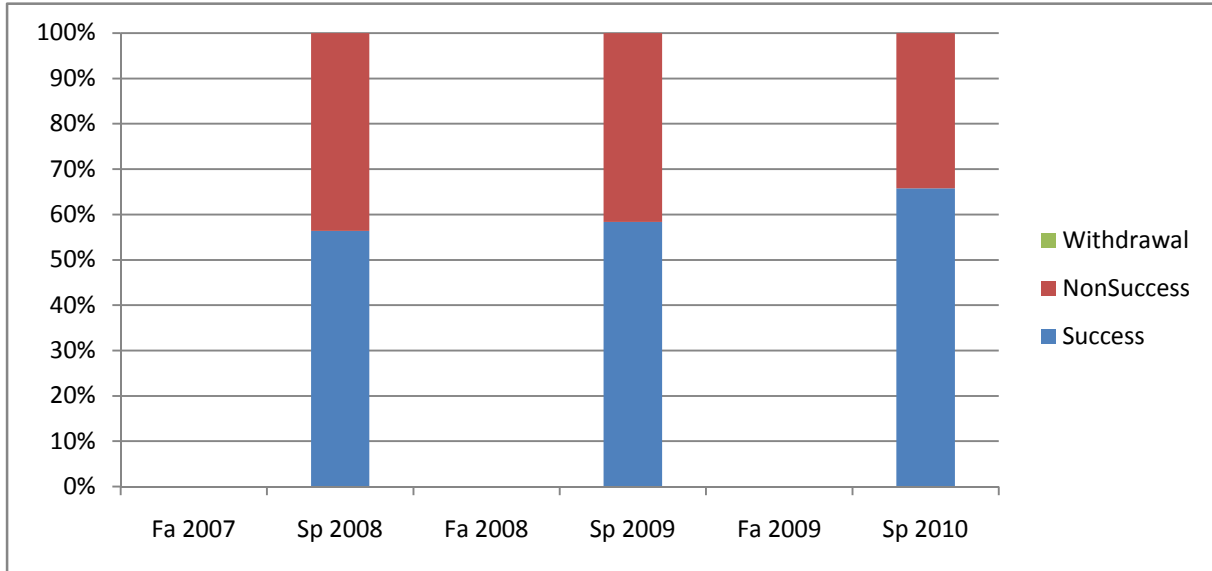
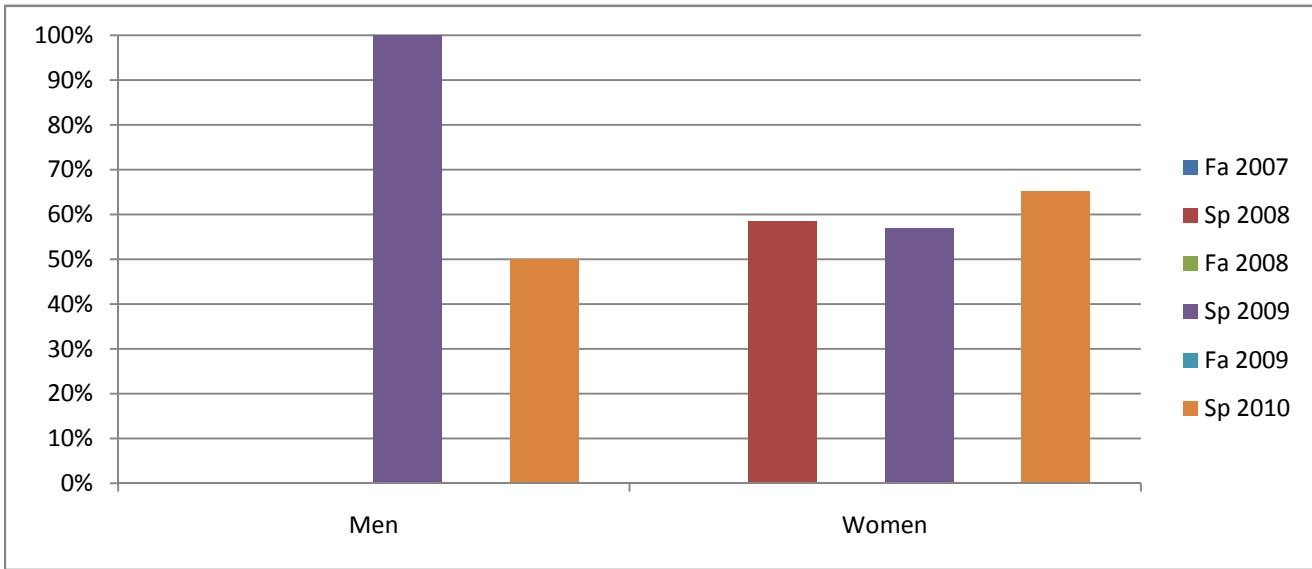


Chabot
 Success, Non-Success, and Withdrawal Rates By Semester
 Course: ECD 150C



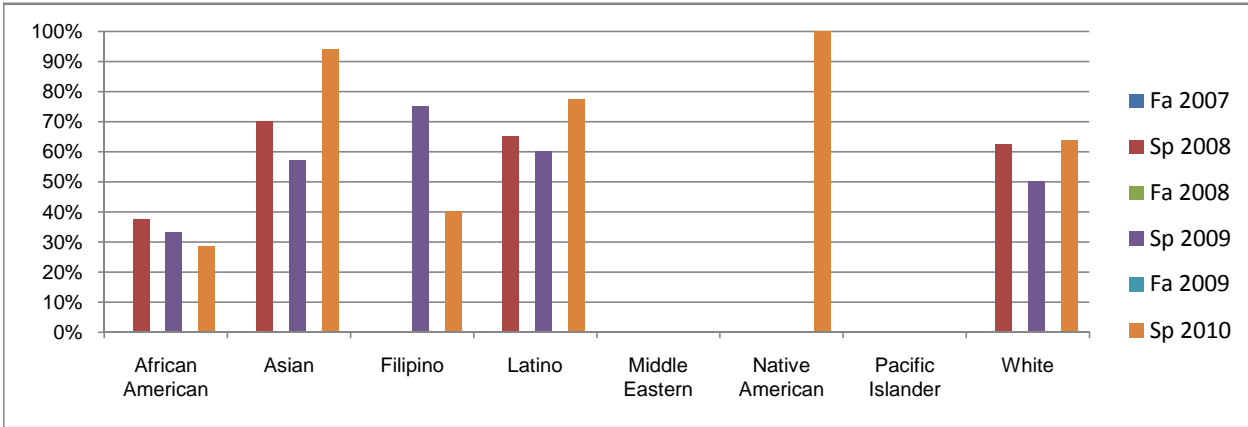
| | Fa 2007 | Sp 2008 | Fa 2008 | Sp 2009 | Fa 2009 | Sp 2010 |
|----------------|----------|-----------|----------|-----------|----------|-----------|
| Success | 0% | 56% | 0% | 58% | 0% | 66% |
| Non-Success | 0% | 44% | 0% | 42% | 0% | 34% |
| Withdrawal | 0% | 0% | 0% | 0% | 0% | 0% |
| Total Percent | 0% | 100% | 0% | 100% | 0% | 100% |
| Total Enrolled | 0 | 55 | 0 | 60 | 0 | 73 |

Chabot
 Success Rates By Gender and Semester
 Course: ECD 150C



| | Fa 2007 | Sp 2008 | Fa 2008 | Sp 2009 | Fa 2009 | Sp 2010 |
|----------------|----------|-----------|----------|-----------|----------|-----------|
| Men | | | | | | |
| Success | 0% | 0% | 0% | 100% | 0% | 50% |
| Non-Success | 0% | 100% | 0% | 0% | 0% | 50% |
| Withdrawal | 0% | 0% | 0% | 0% | 0% | 0% |
| Total Percent | 0% | 100% | 0% | 100% | 0% | 100% |
| Total Enrolled | 0 | 1 | 0 | 1 | 0 | 2 |
| Women | | | | | | |
| Success | 0% | 58% | 0% | 57% | 0% | 65% |
| Non-Success | 0% | 42% | 0% | 43% | 0% | 35% |
| Withdrawal | 0% | 0% | 0% | 0% | 0% | 0% |
| Total Percent | 0% | 100% | 0% | 100% | 0% | 100% |
| Total Enrolled | 0 | 53 | 0 | 58 | 0 | 69 |

Chabot
 Success Rates By Ethnicity and Semester
 Course: ECD 150C



| | Fa 2007 | Sp 2008 | Fa 2008 | Sp 2009 | Fa 2009 | Sp 2010 |
|-------------------------|----------|-----------|----------|-----------|----------|-----------|
| African American | | | | | | |
| Success | 0% | 38% | 0% | 33% | 0% | 29% |
| Non-Success | 0% | 63% | 0% | 67% | 0% | 71% |
| Withdrawal | 0% | 0% | 0% | 0% | 0% | 0% |
| Total Percent | 0% | 100% | 0% | 100% | 0% | 100% |
| Total Enrolled | 0 | 8 | 0 | 6 | 0 | 14 |
| Asian | | | | | | |
| Success | 0% | 70% | 0% | 57% | 0% | 94% |
| Non-Success | 0% | 30% | 0% | 43% | 0% | 6% |
| Withdrawal | 0% | 0% | 0% | 0% | 0% | 0% |
| Total Percent | 0% | 100% | 0% | 100% | 0% | 100% |
| Total Enrolled | 0 | 10 | 0 | 14 | 0 | 17 |
| Filipino | | | | | | |
| Success | 0% | 0% | 0% | 75% | 0% | 40% |
| Non-Success | 0% | 100% | 0% | 25% | 0% | 60% |
| Withdrawal | 0% | 0% | 0% | 0% | 0% | 0% |
| Total Percent | 0% | 100% | 0% | 100% | 0% | 100% |
| Total Enrolled | 0 | 4 | 0 | 8 | 0 | 5 |
| Latino | | | | | | |
| Success | 0% | 65% | 0% | 60% | 0% | 77% |
| Non-Success | 0% | 35% | 0% | 40% | 0% | 23% |
| Withdrawal | 0% | 0% | 0% | 0% | 0% | 0% |
| Total Percent | 0% | 100% | 0% | 100% | 0% | 100% |
| Total Enrolled | 0 | 23 | 0 | 20 | 0 | 22 |
| Middle Eastern | | | | | | |
| Success | 0% | 0% | 0% | 0% | 0% | 0% |
| Non-Success | 0% | 0% | 0% | 0% | 0% | 0% |
| Withdrawal | 0% | 0% | 0% | 0% | 0% | 0% |
| Total Percent | 0% | 0% | 0% | 0% | 0% | 0% |
| Total Enrolled | 0 | 0 | 0 | 0 | 0 | 0 |
| Native American | | | | | | |
| Success | 0% | 0% | 0% | 0% | 0% | 100% |
| Non-Success | 0% | 0% | 0% | 0% | 0% | 0% |
| Withdrawal | 0% | 0% | 0% | 0% | 0% | 0% |
| Total Percent | 0% | 0% | 0% | 0% | 0% | 100% |
| Total Enrolled | 0 | 0 | 0 | 0 | 0 | 1 |
| Pacific Islander | | | | | | |
| Success | 0% | 0% | 0% | 0% | 0% | 0% |
| Non-Success | 0% | 0% | 0% | 0% | 0% | 0% |
| Withdrawal | 0% | 0% | 0% | 0% | 0% | 0% |
| Total Percent | 0% | 0% | 0% | 0% | 0% | 0% |
| Total Enrolled | 0 | 0 | 0 | 0 | 0 | 0 |
| White | | | | | | |
| Success | 0% | 63% | 0% | 50% | 0% | 64% |
| Non-Success | 0% | 38% | 0% | 50% | 0% | 36% |
| Withdrawal | 0% | 0% | 0% | 0% | 0% | 0% |
| Total Percent | 0% | 100% | 0% | 100% | 0% | 100% |
| Total Enrolled | 0 | 8 | 0 | 10 | 0 | 11 |