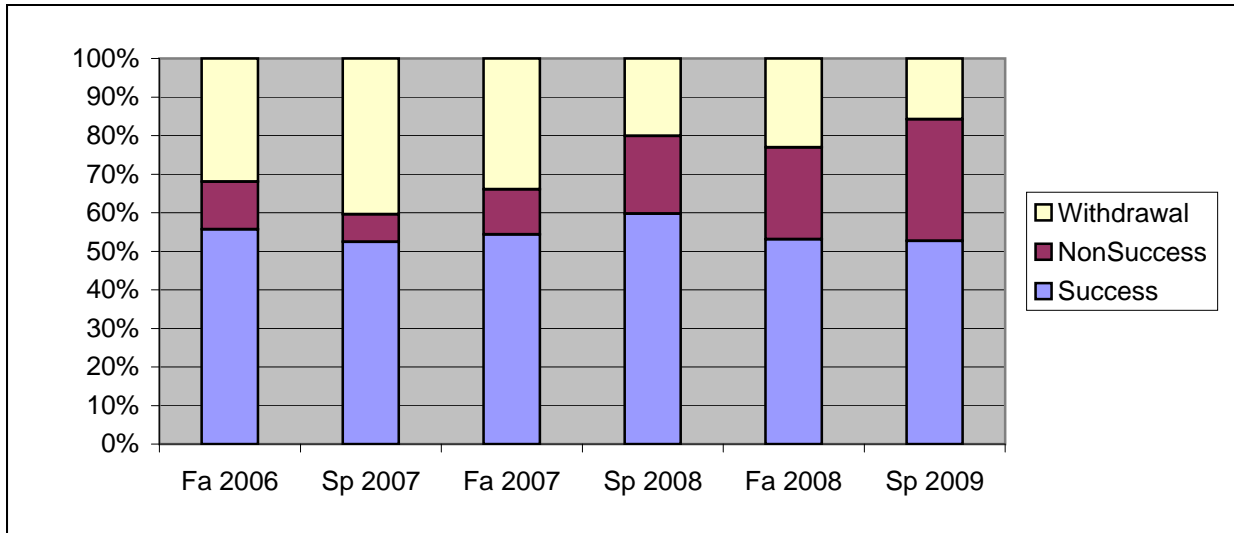
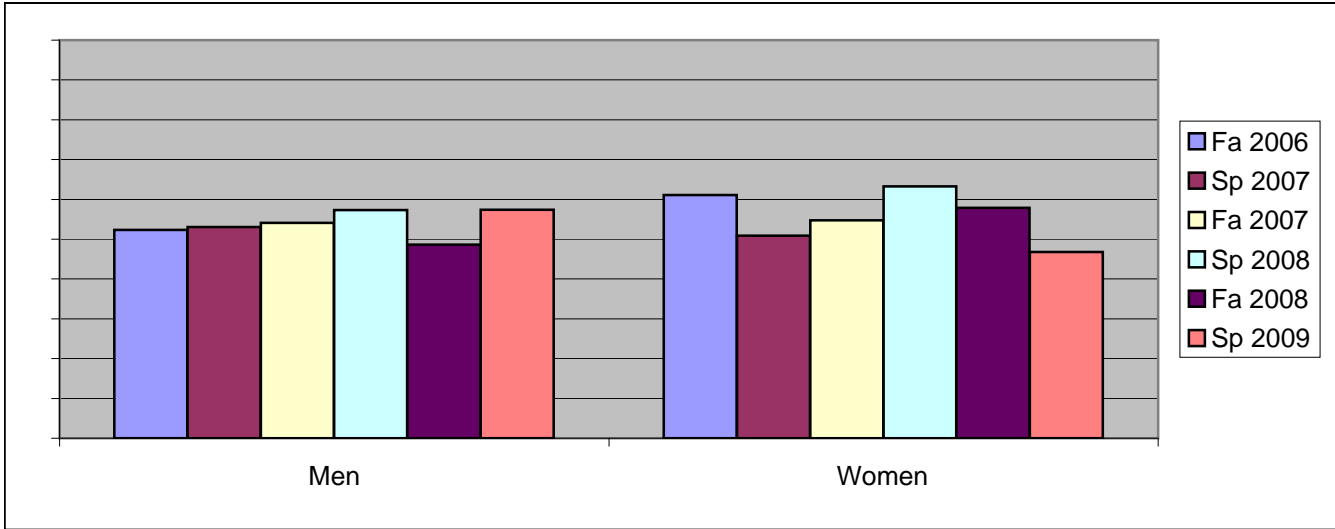


Chabot  
 Success, Non-Success, and Withdrawal Rates By Semester  
 Course: ECON 1



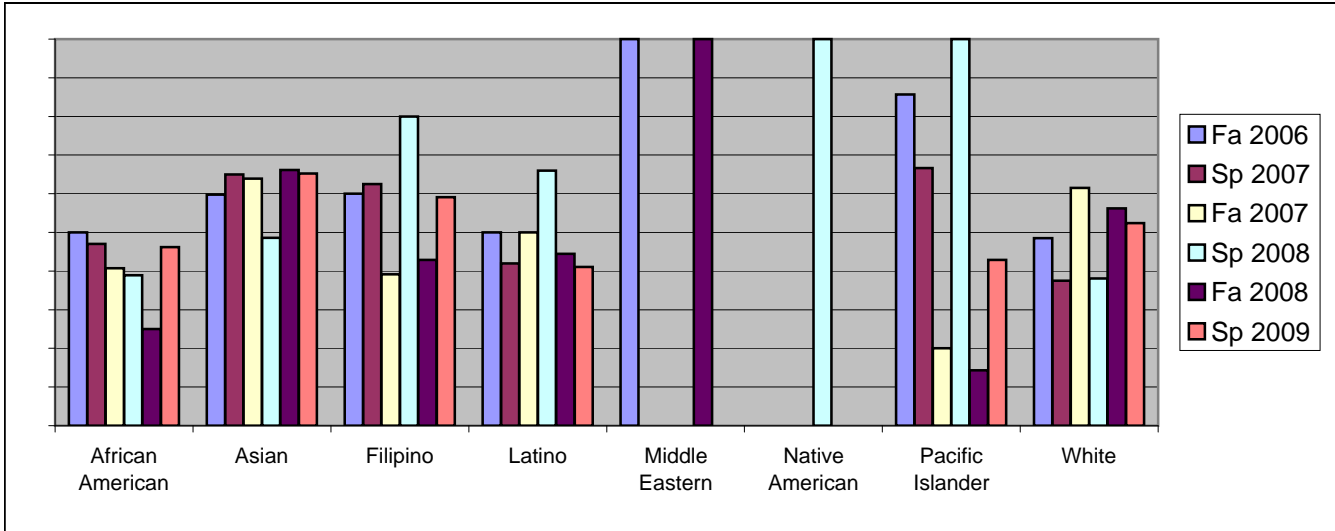
	Fa 2006	Sp 2007	Fa 2007	Sp 2008	Fa 2008	Sp 2009
Success	56%	52%	54%	60%	53%	53%
Non-Success	12%	7%	12%	20%	24%	32%
Withdrawal	32%	40%	34%	20%	23%	16%
Total Percent	100%	100%	100%	100%	100%	100%
Total Enrolled	<b>219</b>	<b>141</b>	<b>206</b>	<b>164</b>	<b>273</b>	<b>165</b>

Chabot  
Success Rates By Gender and Semester  
Course: ECON 1



	Fa 2006	Sp 2007	Fa 2007	Sp 2008	Fa 2008	Sp 2009
<b>Men</b>						
Success	52%	53%	54%	57%	49%	57%
Non-Success	13%	7%	11%	26%	27%	31%
Withdrawal	34%	40%	35%	17%	24%	12%
Total Percent	100%	100%	100%	100%	100%	100%
Total Enrolled	<b>128</b>	<b>81</b>	<b>109</b>	<b>82</b>	<b>150</b>	<b>101</b>
<b>Women</b>						
Success	61%	51%	55%	63%	58%	47%
Non-Success	11%	5%	13%	14%	20%	34%
Withdrawal	28%	44%	33%	23%	22%	19%
Total Percent	100%	100%	100%	100%	100%	100%
Total Enrolled	<b>90</b>	<b>55</b>	<b>95</b>	<b>79</b>	<b>121</b>	<b>62</b>

Chabot  
Success Rates By Ethnicity and Semester  
Course: ECON 1



	Fa 2006	Sp 2007	Fa 2007	Sp 2008	Fa 2008	Sp 2009
<b>African American</b>						
Success	50%	47%	41%	39%	25%	46%
Non-Success	6%	0%	7%	33%	38%	23%
Withdrawal	44%	53%	52%	28%	38%	31%
Total Percent	100%	100%	100%	100%	100%	100%
Total Enrolled	<b>18</b>	<b>17</b>	<b>27</b>	<b>18</b>	<b>32</b>	<b>13</b>
<b>Asian</b>						
Success	60%	65%	64%	49%	66%	65%
Non-Success	17%	0%	15%	23%	20%	35%
Withdrawal	23%	35%	21%	29%	14%	0%
Total Percent	100%	100%	100%	100%	100%	100%
Total Enrolled	<b>77</b>	<b>40</b>	<b>72</b>	<b>35</b>	<b>118</b>	<b>46</b>
<b>Filipino</b>						
Success	60%	63%	39%	80%	43%	59%
Non-Success	0%	25%	13%	5%	24%	27%
Withdrawal	40%	13%	48%	15%	33%	14%
Total Percent	100%	100%	100%	100%	100%	100%
Total Enrolled	<b>20</b>	<b>8</b>	<b>23</b>	<b>20</b>	<b>21</b>	<b>22</b>
<b>Latino</b>						
Success	50%	42%	50%	66%	44%	41%
Non-Success	16%	16%	13%	21%	31%	38%
Withdrawal	34%	42%	37%	13%	24%	21%
Total Percent	100%	100%	100%	100%	100%	100%
Total Enrolled	<b>38</b>	<b>31</b>	<b>38</b>	<b>47</b>	<b>45</b>	<b>39</b>
<b>Middle Eastern</b>						
Success	100%	0%	0%	0%	100%	0%
Non-Success	0%	0%	0%	0%	0%	0%
Withdrawal	0%	0%	0%	0%	0%	0%
Total Percent	100%	0%	0%	0%	100%	0%
Total Enrolled	<b>1</b>	<b>0</b>	<b>0</b>	<b>0</b>	<b>1</b>	<b>0</b>
<b>Native American</b>						
Success	0%	0%	0%	100%	0%	0%
Non-Success	0%	0%	0%	0%	0%	0%
Withdrawal	100%	0%	100%	0%	0%	0%

Total Percent	100%	0%	100%	100%	0%	0%
Total Enrolled	<b>1</b>	<b>0</b>	<b>1</b>	<b>1</b>	<b>0</b>	<b>0</b>
<b>Pacific Islander</b>						
Success	86%	67%	20%	100%	14%	43%
Non-Success	7%	0%	20%	0%	43%	29%
Withdrawal	7%	33%	60%	0%	43%	29%
Total Percent	100%	100%	100%	100%	100%	100%
Total Enrolled	<b>14</b>	<b>3</b>	<b>5</b>	<b>4</b>	<b>7</b>	<b>7</b>
<b>White</b>						
Success	48%	38%	62%	38%	56%	52%
Non-Success	9%	8%	4%	29%	16%	24%
Withdrawal	42%	54%	35%	33%	28%	24%
Total Percent	100%	100%	100%	100%	100%	100%
Total Enrolled	<b>33</b>	<b>24</b>	<b>26</b>	<b>21</b>	<b>32</b>	<b>21</b>