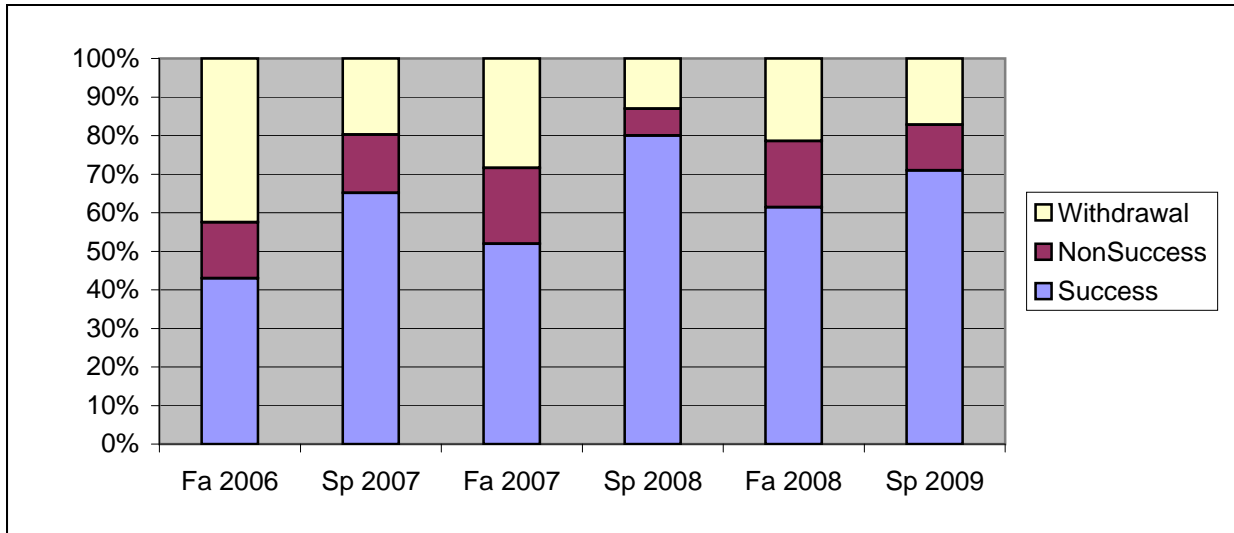
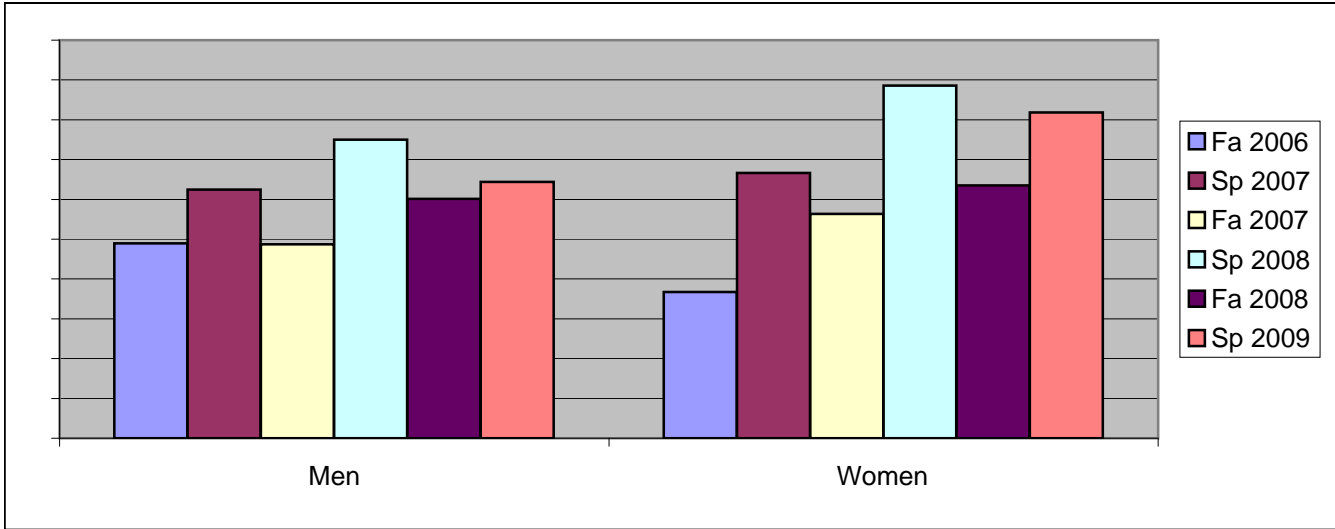


Chabot  
 Success, Non-Success, and Withdrawal Rates By Semester  
 Course: HIS 1



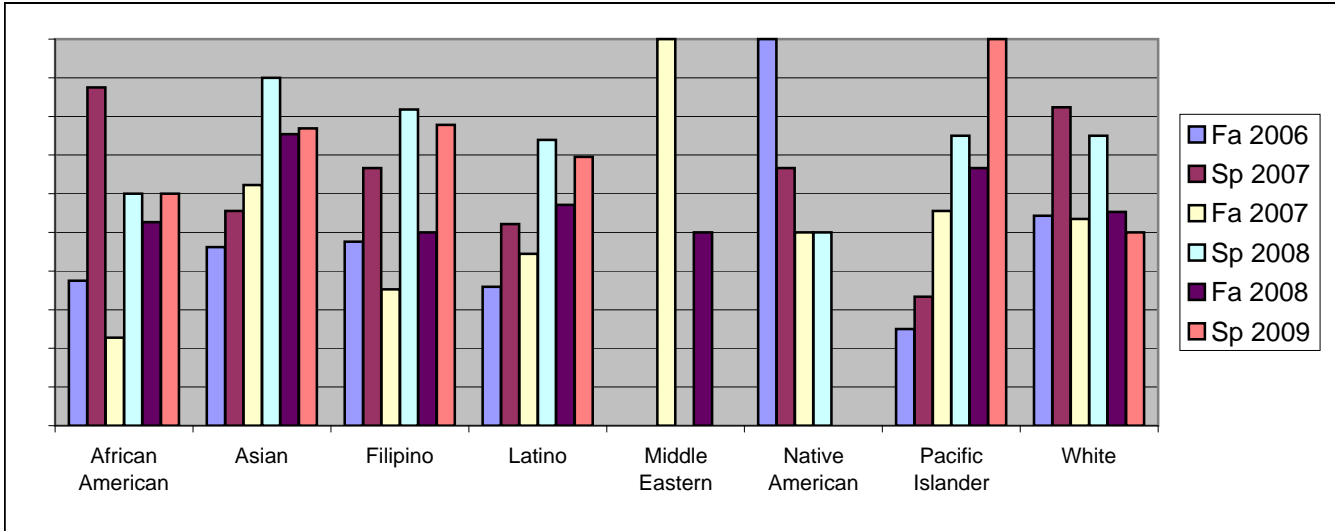
	Fa 2006	Sp 2007	Fa 2007	Sp 2008	Fa 2008	Sp 2009
Success	43%	65%	52%	80%	61%	71%
Non-Success	15%	15%	20%	7%	17%	12%
Withdrawal	42%	20%	28%	13%	21%	17%
Total Percent	100%	100%	100%	100%	100%	100%
Total Enrolled	<b>179</b>	<b>86</b>	<b>208</b>	<b>100</b>	<b>215</b>	<b>93</b>

Chabot  
Success Rates By Gender and Semester  
Course: HIS 1



	Fa 2006	Sp 2007	Fa 2007	Sp 2008	Fa 2008	Sp 2009
<b>Men</b>						
Success	49%	63%	49%	75%	60%	64%
Non-Success	9%	19%	25%	6%	20%	14%
Withdrawal	42%	19%	26%	19%	20%	22%
Total Percent	100%	100%	100%	100%	100%	100%
Total Enrolled	<b>96</b>	<b>48</b>	<b>117</b>	<b>64</b>	<b>128</b>	<b>59</b>
<b>Women</b>						
Success	37%	67%	56%	89%	64%	82%
Non-Success	20%	11%	13%	9%	12%	9%
Withdrawal	43%	22%	31%	3%	25%	9%
Total Percent	100%	100%	100%	100%	100%	100%
Total Enrolled	<b>79</b>	<b>36</b>	<b>87</b>	<b>35</b>	<b>85</b>	<b>33</b>

Chabot  
Success Rates By Ethnicity and Semester  
Course: HIS 1



	Fa 2006	Sp 2007	Fa 2007	Sp 2008	Fa 2008	Sp 2009
<b>African American</b>						
Success	38%	88%	23%	60%	53%	60%
Non-Success	13%	0%	27%	20%	16%	10%
Withdrawal	50%	13%	50%	20%	32%	30%
Total Percent	100%	100%	100%	100%	100%	100%
Total Enrolled	<b>16</b>	<b>8</b>	<b>22</b>	<b>5</b>	<b>19</b>	<b>10</b>
<b>Asian</b>						
Success	46%	56%	62%	90%	75%	77%
Non-Success	10%	11%	18%	0%	9%	8%
Withdrawal	44%	33%	20%	10%	16%	15%
Total Percent	100%	100%	100%	100%	100%	100%
Total Enrolled	<b>39</b>	<b>9</b>	<b>45</b>	<b>20</b>	<b>57</b>	<b>26</b>
<b>Filipino</b>						
Success	48%	67%	35%	82%	50%	78%
Non-Success	19%	0%	29%	0%	35%	11%
Withdrawal	33%	33%	35%	18%	15%	11%
Total Percent	100%	100%	100%	100%	100%	100%
Total Enrolled	<b>21</b>	<b>12</b>	<b>17</b>	<b>11</b>	<b>20</b>	<b>9</b>
<b>Latino</b>						
Success	36%	52%	44%	74%	57%	70%
Non-Success	21%	22%	22%	22%	14%	17%
Withdrawal	44%	26%	33%	4%	29%	13%
Total Percent	100%	100%	100%	100%	100%	100%
Total Enrolled	<b>39</b>	<b>23</b>	<b>45</b>	<b>23</b>	<b>56</b>	<b>23</b>
<b>Middle Eastern</b>						
Success	0%	0%	100%	0%	50%	0%
Non-Success	0%	0%	0%	0%	0%	0%
Withdrawal	0%	0%	0%	0%	50%	0%
Total Percent	0%	0%	100%	0%	100%	0%
Total Enrolled	<b>0</b>	<b>0</b>	<b>1</b>	<b>0</b>	<b>2</b>	<b>0</b>
<b>Native American</b>						

Success	100%	67%	50%	50%	0%	0%
Non-Success	0%	33%	50%	0%	50%	0%
Withdrawal	0%	0%	0%	50%	50%	0%
Total Percent	100%	100%	100%	100%	100%	0%
Total Enrolled	<b>1</b>	<b>3</b>	<b>2</b>	<b>2</b>	<b>2</b>	<b>0</b>
<b>Pacific Islander</b>						
Success	25%	33%	56%	75%	67%	100%
Non-Success	33%	67%	22%	0%	33%	0%
Withdrawal	42%	0%	22%	25%	0%	0%
Total Percent	100%	100%	100%	100%	100%	100%
Total Enrolled	<b>12</b>	<b>3</b>	<b>9</b>	<b>4</b>	<b>6</b>	<b>2</b>
<b>White</b>						
Success	54%	82%	53%	75%	55%	50%
Non-Success	9%	12%	16%	5%	24%	19%
Withdrawal	37%	6%	30%	20%	21%	31%
Total Percent	100%	100%	100%	100%	100%	100%
Total Enrolled	<b>35</b>	<b>17</b>	<b>43</b>	<b>20</b>	<b>38</b>	<b>16</b>