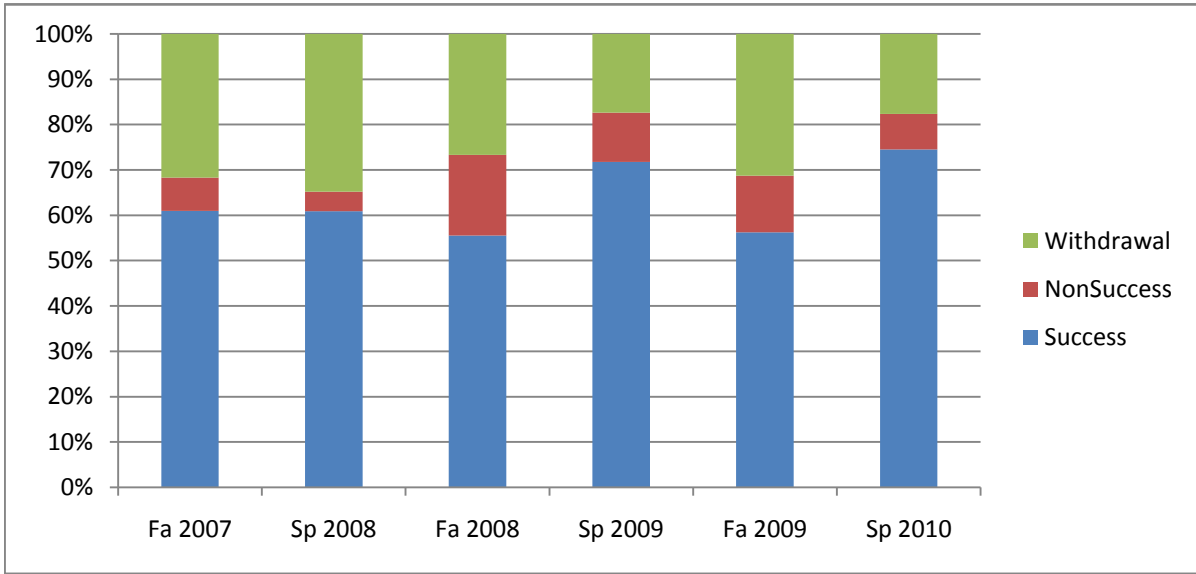
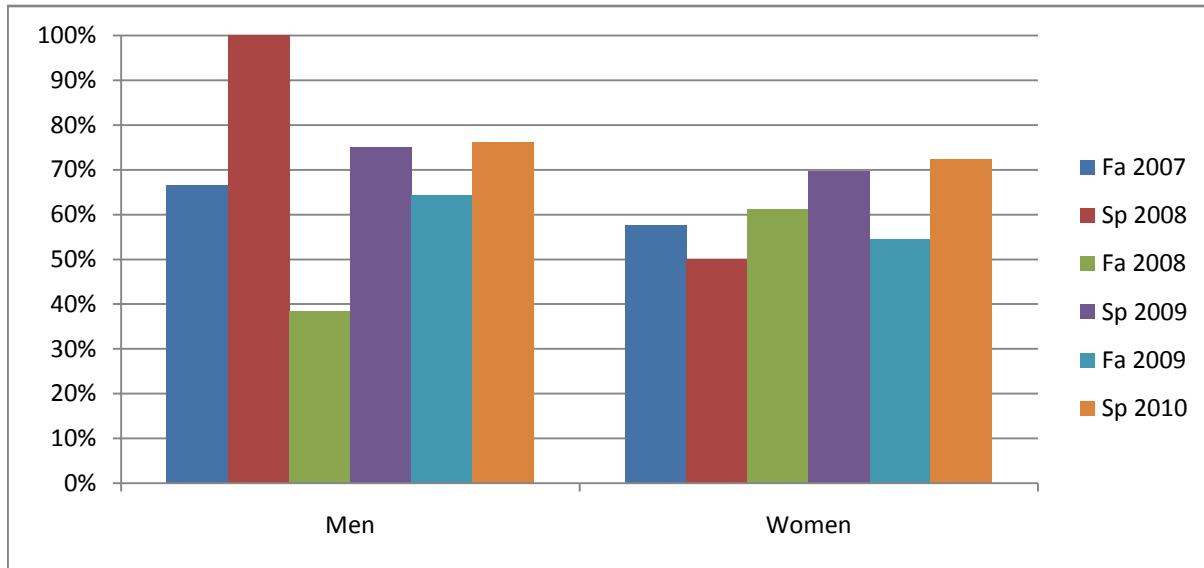


Chabot
 Success, Non-Success, and Withdrawal Rates By Semester
 Course: SOCI 2



| | Fa 2007 | Sp 2008 | Fa 2008 | Sp 2009 | Fa 2009 | Sp 2010 |
|----------------|-----------|-----------|-----------|-----------|-----------|-----------|
| Success | 61% | 61% | 56% | 72% | 56% | 75% |
| Non-Success | 7% | 4% | 18% | 11% | 13% | 8% |
| Withdrawal | 32% | 35% | 27% | 17% | 31% | 18% |
| Total Percent | 100% | 100% | 100% | 100% | 100% | 100% |
| Total Enrolled | 41 | 46 | 45 | 46 | 48 | 51 |

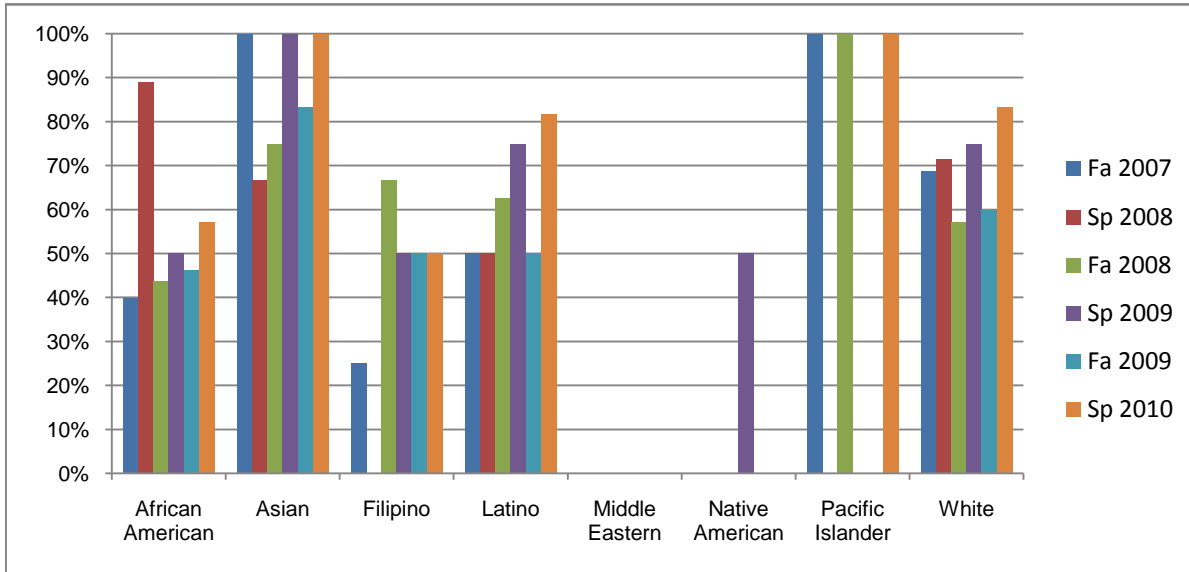
Chabot
Success Rates By Gender and Semester
Course: SOCI 2



| | Fa 2007 | Sp 2008 | Fa 2008 | Sp 2009 | Fa 2009 | Sp 2010 |
|----------------|-----------|-----------|-----------|-----------|-----------|-----------|
| Men | | | | | | |
| Success | 67% | 100% | 38% | 75% | 64% | 76% |
| Non-Success | 7% | 0% | 31% | 8% | 21% | 10% |
| Withdrawal | 27% | 0% | 31% | 17% | 14% | 14% |
| Total Percent | 100% | 100% | 100% | 100% | 100% | 100% |
| Total Enrolled | 15 | 9 | 13 | 12 | 14 | 21 |
| Women | | | | | | |
| Success | 58% | 50% | 61% | 70% | 55% | 72% |
| Non-Success | 8% | 6% | 13% | 12% | 9% | 7% |
| Withdrawal | 35% | 44% | 26% | 18% | 36% | 21% |
| Total Percent | 100% | 100% | 100% | 100% | 100% | 100% |
| Total Enrolled | 26 | 36 | 31 | 33 | 33 | 29 |

Ethnicity_Totals_Course

Chabot
Success Rates By Ethnicity and Semester
Course: SOCI 2



| | Fa 2007 | Sp 2008 | Fa 2008 | Sp 2009 | Fa 2009 | Sp 2010 |
|-------------------------|-----------|-----------|-----------|-----------|-----------|-----------|
| African American | | | | | | |
| Success | 40% | 89% | 44% | 50% | 46% | 57% |
| Non-Success | 0% | 0% | 31% | 10% | 23% | 14% |
| Withdrawal | 60% | 11% | 25% | 40% | 31% | 29% |
| Total Percent | 100% | 100% | 100% | 100% | 100% | 100% |
| Total Enrolled | 10 | 9 | 16 | 10 | 13 | 7 |
| Asian | | | | | | |
| Success | 100% | 67% | 75% | 100% | 83% | 100% |
| Non-Success | 0% | 0% | 0% | 0% | 0% | 0% |
| Withdrawal | 0% | 33% | 25% | 0% | 17% | 0% |
| Total Percent | 100% | 100% | 100% | 100% | 100% | 100% |
| Total Enrolled | 3 | 6 | 4 | 2 | 6 | 6 |
| Filipino | | | | | | |
| Success | 25% | 0% | 67% | 50% | 50% | 50% |
| Non-Success | 25% | 0% | 0% | 50% | 0% | 13% |
| Withdrawal | 50% | 100% | 33% | 0% | 50% | 38% |
| Total Percent | 100% | 100% | 100% | 100% | 100% | 100% |
| Total Enrolled | 4 | 1 | 6 | 2 | 2 | 8 |
| Latino | | | | | | |
| Success | 50% | 50% | 63% | 75% | 50% | 82% |
| Non-Success | 0% | 6% | 13% | 25% | 10% | 0% |
| Withdrawal | 50% | 44% | 25% | 0% | 40% | 18% |
| Total Percent | 100% | 100% | 100% | 100% | 100% | 100% |
| Total Enrolled | 4 | 18 | 8 | 8 | 10 | 11 |
| Middle Eastern | | | | | | |
| Success | 0% | 0% | 0% | 0% | 0% | 0% |
| Non-Success | 0% | 0% | 0% | 0% | 0% | 0% |
| Withdrawal | 0% | 0% | 0% | 0% | 0% | 0% |

Ethnicity_Totals_Course

| | | | | | | |
|-------------------------|-----------|----------|----------|----------|-----------|-----------|
| Total Percent | 0% | 0% | 0% | 0% | 0% | 0% |
| Total Enrolled | 0 | 0 | 0 | 0 | 0 | 0 |
| Native American | | | | | | |
| Success | 0% | 0% | 0% | 50% | 0% | 0% |
| Non-Success | 0% | 0% | 0% | 0% | 0% | 0% |
| Withdrawal | 0% | 0% | 0% | 50% | 0% | 0% |
| Total Percent | 0% | 0% | 0% | 100% | 0% | 0% |
| Total Enrolled | 0 | 0 | 0 | 2 | 0 | 0 |
| Pacific Islander | | | | | | |
| Success | 100% | 0% | 100% | 0% | 0% | 100% |
| Non-Success | 0% | 0% | 0% | 0% | 0% | 0% |
| Withdrawal | 0% | 100% | 0% | 0% | 100% | 0% |
| Total Percent | 100% | 100% | 100% | 0% | 100% | 100% |
| Total Enrolled | 1 | 1 | 1 | 0 | 1 | 1 |
| White | | | | | | |
| Success | 69% | 71% | 57% | 75% | 60% | 83% |
| Non-Success | 13% | 0% | 14% | 13% | 10% | 8% |
| Withdrawal | 19% | 29% | 29% | 13% | 30% | 8% |
| Total Percent | 100% | 100% | 100% | 100% | 100% | 100% |
| Total Enrolled | 16 | 7 | 7 | 8 | 10 | 12 |