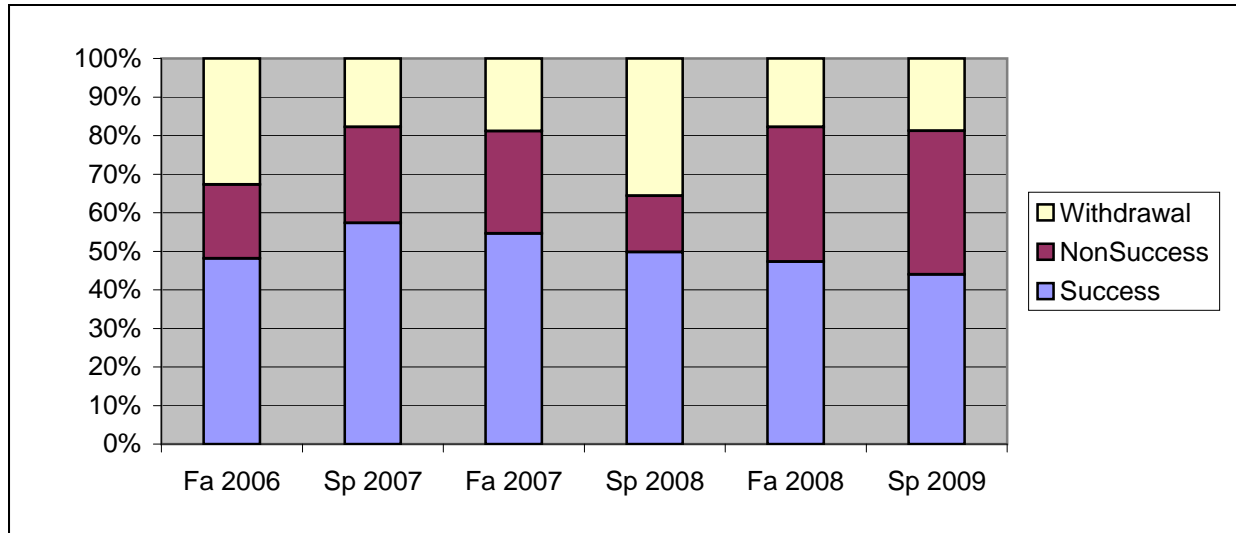
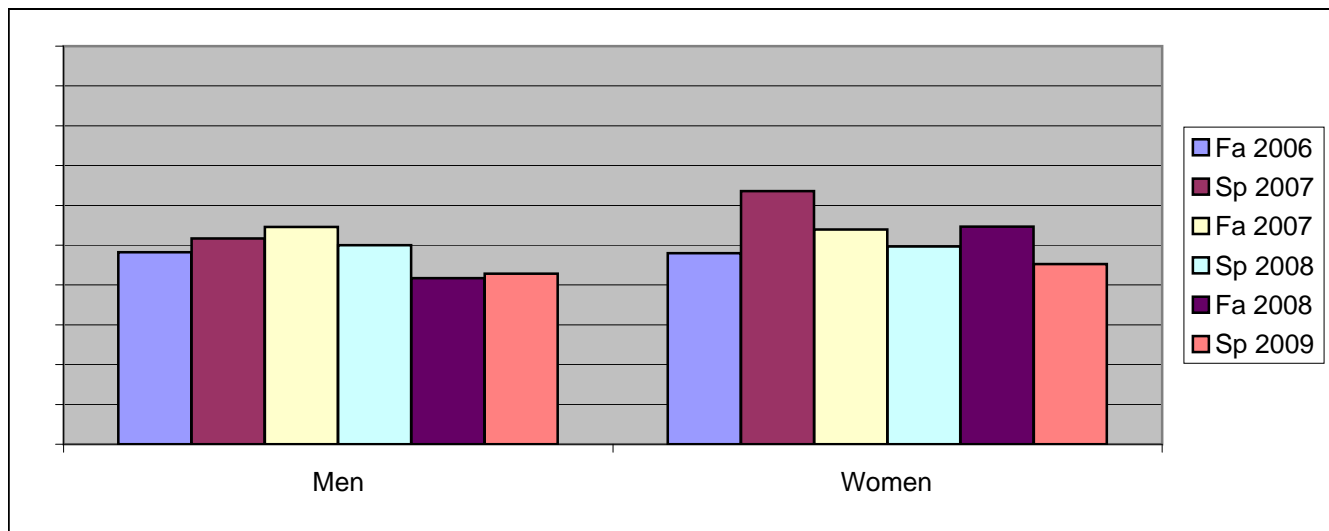


Chabot  
Success, Non-Success, and Withdrawal Rates By Semester  
Course: BUS 12



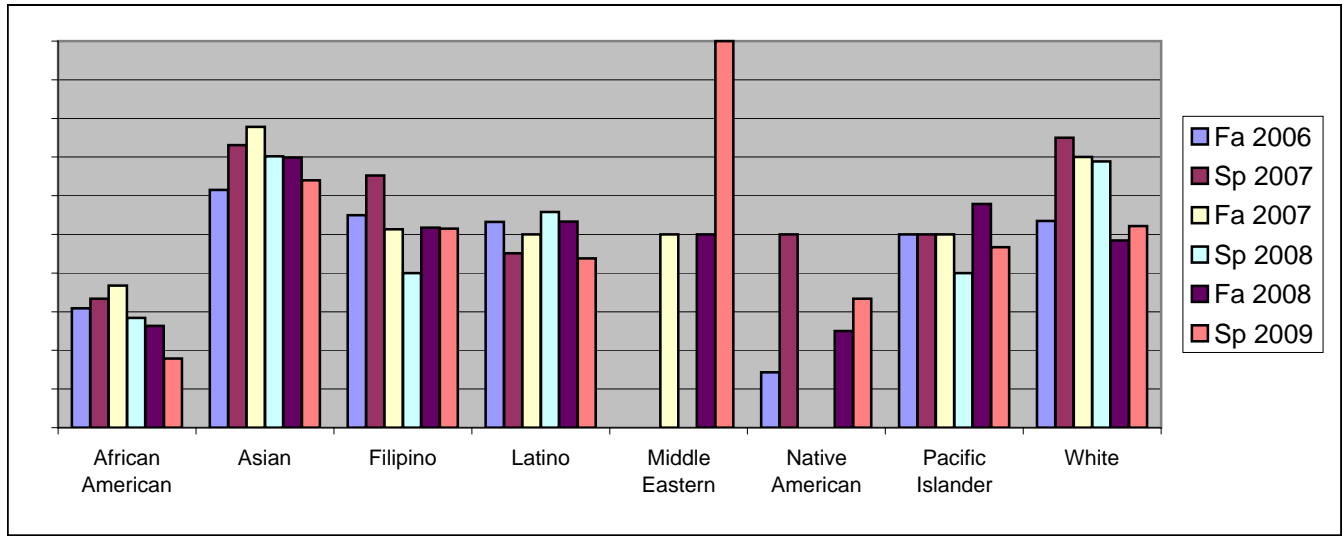
	Fa 2006	Sp 2007	Fa 2007	Sp 2008	Fa 2008	Sp 2009
Success	48%	57%	55%	50%	47%	44%
Non-Success	19%	25%	27%	15%	35%	37%
Withdrawal	33%	18%	19%	36%	18%	19%
Total Percent	100%	100%	100%	100%	100%	100%
Total Enrolled	<b>297</b>	<b>225</b>	<b>339</b>	<b>275</b>	<b>406</b>	<b>314</b>

Chabot  
Success Rates By Gender and Semester  
Course: BUS 12



	Fa 2006	Sp 2007	Fa 2007	Sp 2008	Fa 2008	Sp 2009
<b>Men</b>						
Success	48%	52%	55%	50%	42%	43%
Non-Success	17%	29%	27%	14%	41%	38%
Withdrawal	34%	19%	18%	36%	17%	19%
Total Percent	100%	100%	100%	100%	100%	100%
Total Enrolled	<b>172</b>	<b>118</b>	<b>165</b>	<b>118</b>	<b>223</b>	<b>175</b>
<b>Women</b>						
Success	48%	64%	54%	50%	55%	45%
Non-Success	21%	21%	25%	15%	27%	36%
Withdrawal	31%	16%	21%	35%	19%	18%
Total Percent	100%	100%	100%	100%	100%	100%
Total Enrolled	<b>123</b>	<b>107</b>	<b>165</b>	<b>151</b>	<b>172</b>	<b>137</b>

Chabot  
Success Rates By Ethnicity and Semester  
Course: BUS 12



	Fa 2006	Sp 2007	Fa 2007	Sp 2008	Fa 2008	Sp 2009
<b>African American</b>						
Success	31%	33%	37%	28%	26%	18%
Non-Success	35%	38%	43%	20%	59%	55%
Withdrawal	35%	29%	21%	51%	15%	27%
Total Percent	100%	100%	100%	100%	100%	100%
Total Enrolled	<b>81</b>	<b>42</b>	<b>68</b>	<b>74</b>	<b>95</b>	<b>56</b>
<b>Asian</b>						
Success	62%	73%	78%	70%	70%	64%
Non-Success	8%	13%	7%	9%	16%	20%
Withdrawal	31%	13%	16%	21%	14%	16%
Total Percent	100%	100%	100%	100%	100%	100%
Total Enrolled	<b>52</b>	<b>52</b>	<b>45</b>	<b>47</b>	<b>63</b>	<b>50</b>
<b>Filipino</b>						
Success	55%	65%	51%	40%	52%	52%
Non-Success	15%	26%	22%	27%	31%	30%
Withdrawal	30%	9%	27%	33%	17%	18%
Total Percent	100%	100%	100%	100%	100%	100%
Total Enrolled	<b>20</b>	<b>23</b>	<b>37</b>	<b>15</b>	<b>29</b>	<b>33</b>
<b>Latino</b>						
Success	53%	45%	50%	56%	53%	44%
Non-Success	18%	29%	34%	10%	29%	40%
Withdrawal	29%	25%	16%	35%	18%	16%
Total Percent	100%	100%	100%	100%	100%	100%
Total Enrolled	<b>62</b>	<b>51</b>	<b>86</b>	<b>52</b>	<b>90</b>	<b>89</b>
<b>Middle Eastern</b>						
Success	0%	0%	50%	0%	50%	100%
Non-Success	0%	0%	50%	0%	0%	0%
Withdrawal	100%	0%	0%	0%	50%	0%

Total Percent	100%	0%	100%	0%	100%	100%
Total Enrolled	<b>1</b>	<b>0</b>	<b>2</b>	<b>0</b>	<b>2</b>	<b>2</b>
<b>Native American</b>						
Success	14%	50%	0%	0%	25%	33%
Non-Success	14%	50%	67%	0%	50%	67%
Withdrawal	71%	0%	33%	100%	25%	0%
Total Percent	100%	100%	100%	100%	100%	100%
Total Enrolled	<b>7</b>	<b>2</b>	<b>3</b>	<b>1</b>	<b>4</b>	<b>3</b>
<b>Pacific Islander</b>						
Success	50%	50%	50%	40%	58%	47%
Non-Success	33%	25%	14%	0%	16%	33%
Withdrawal	17%	25%	36%	60%	26%	20%
Total Percent	100%	100%	100%	100%	100%	100%
Total Enrolled	<b>6</b>	<b>4</b>	<b>14</b>	<b>5</b>	<b>19</b>	<b>15</b>
<b>White</b>						
Success	53%	75%	70%	69%	48%	52%
Non-Success	12%	22%	16%	13%	30%	28%
Withdrawal	35%	3%	14%	18%	22%	20%
Total Percent	100%	100%	100%	100%	100%	100%
Total Enrolled	<b>43</b>	<b>36</b>	<b>50</b>	<b>45</b>	<b>64</b>	<b>46</b>