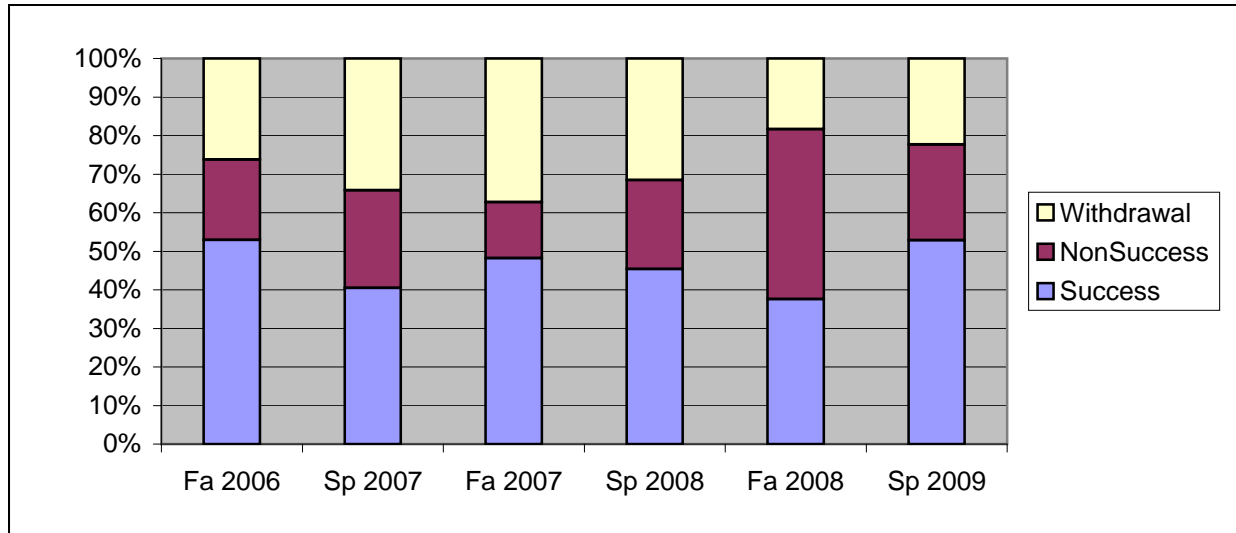
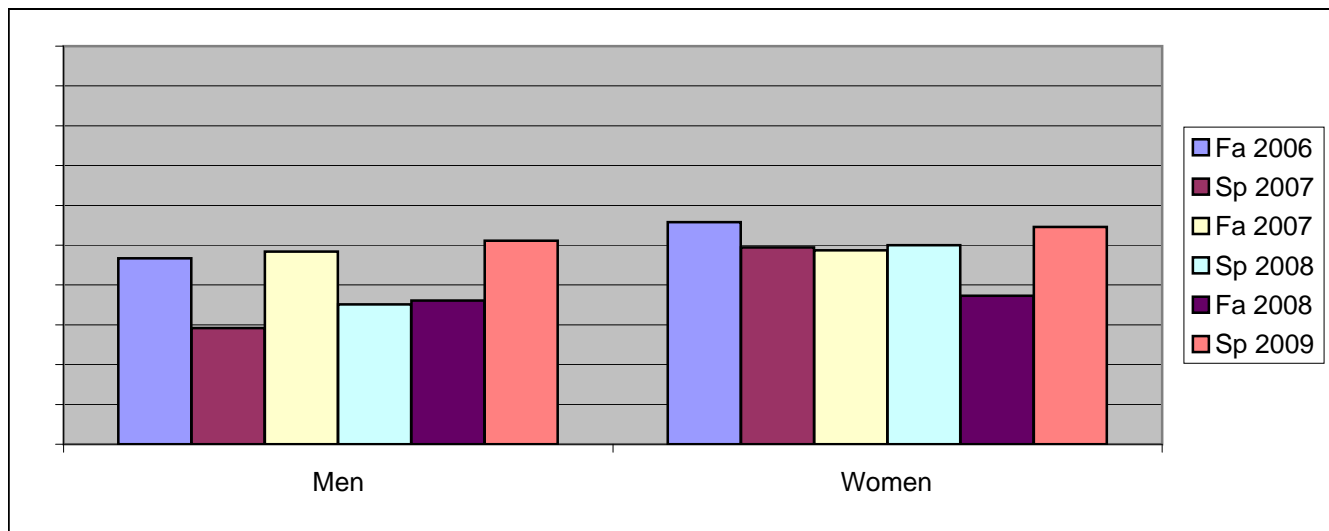


Chabot  
Success, Non-Success, and Withdrawal Rates By Semester  
Course: BUS 16



	Fa 2006	Sp 2007	Fa 2007	Sp 2008	Fa 2008	Sp 2009
Success	53%	41%	48%	45%	38%	53%
Non-Success	21%	25%	15%	23%	44%	25%
Withdrawal	26%	34%	37%	32%	18%	22%
Total Percent	100%	100%	100%	100%	100%	100%
Total Enrolled	<b>168</b>	<b>158</b>	<b>110</b>	<b>130</b>	<b>109</b>	<b>121</b>

Chabot  
Success Rates By Gender and Semester  
Course: BUS 16



	Fa 2006	Sp 2007	Fa 2007	Sp 2008	Fa 2008	Sp 2009
<b>Men</b>						
Success	47%	29%	48%	35%	36%	51%
Non-Success	27%	31%	19%	22%	42%	35%
Withdrawal	27%	40%	32%	43%	22%	14%
Total Percent	100%	100%	100%	100%	100%	100%
Total Enrolled	<b>60</b>	<b>72</b>	<b>31</b>	<b>37</b>	<b>36</b>	<b>43</b>
<b>Women</b>						
Success	56%	49%	49%	50%	37%	55%
Non-Success	17%	21%	12%	23%	46%	19%
Withdrawal	27%	29%	40%	27%	16%	26%
Total Percent	100%	100%	100%	100%	100%	100%
Total Enrolled	<b>104</b>	<b>85</b>	<b>78</b>	<b>90</b>	<b>67</b>	<b>77</b>

Bar chart showing the percentage of students in each ethnic group who are on track for graduation by semester. The chart compares six semesters: Fall 2006, Spring 2007, Fall 2007, Spring 2008, Fall 2008, and Spring 2009. The ethnic groups are African American, Asian, Filipino, Latino, Middle Eastern, Native American, Pacific Islander, and White. The y-axis represents the percentage of students on track, ranging from 0% to 100%.

Ethnic Group	Fa 2006	Sp 2007	Fa 2007	Sp 2008	Fa 2008	Sp 2009
African American	~15%	~10%	~18%	~15%	~12%	~25%
Asian	~75%	~65%	~85%	~60%	~45%	~80%
Filipino	~55%	~50%	~55%	~45%	~45%	~85%
Latino	~55%	~45%	~55%	~65%	~50%	~45%
Middle Eastern	0%	0%	0%	0%	0%	0%
Native American	~65%	~55%	0%	0%	0%	0%
Pacific Islander	100%	0%	100%	0%	~55%	0%
White	~75%	~65%	~60%	~75%	~65%	~80%

	Fa 2006	Sp 2007	Fa 2007	Sp 2008	Fa 2008	Sp 2009
<b>African American</b>						
Success	29%	10%	32%	29%	28%	41%
Non-Success	32%	38%	7%	26%	55%	21%
Withdrawal	39%	52%	61%	44%	17%	38%
Total Percent	100%	100%	100%	100%	100%	100%
Total Enrolled	<b>38</b>	<b>29</b>	<b>28</b>	<b>34</b>	<b>29</b>	<b>34</b>
<b>Asian</b>						
Success	63%	56%	75%	47%	31%	67%
Non-Success	17%	12%	0%	24%	38%	20%
Withdrawal	21%	32%	25%	29%	31%	13%
Total Percent	100%	100%	100%	100%	100%	100%
Total Enrolled	<b>24</b>	<b>25</b>	<b>12</b>	<b>17</b>	<b>13</b>	<b>15</b>
<b>Filipino</b>						
Success	46%	38%	40%	33%	33%	75%
Non-Success	31%	23%	40%	33%	33%	25%
Withdrawal	23%	38%	20%	33%	33%	0%
Total Percent	100%	100%	100%	100%	100%	100%
Total Enrolled	<b>13</b>	<b>13</b>	<b>10</b>	<b>12</b>	<b>9</b>	<b>4</b>
<b>Latino</b>						
Success	52%	38%	47%	57%	39%	37%
Non-Success	32%	31%	16%	10%	33%	32%
Withdrawal	16%	31%	37%	33%	28%	32%
Total Percent	100%	100%	100%	100%	100%	100%
Total Enrolled	<b>25</b>	<b>32</b>	<b>19</b>	<b>21</b>	<b>18</b>	<b>19</b>
<b>Middle Eastern</b>						
Success	0%	0%	0%	0%	0%	0%
Non-Success	0%	0%	0%	0%	0%	0%
Withdrawal	0%	0%	0%	0%	0%	0%
Total Percent	0%	0%	0%	0%	0%	0%
Total Enrolled	<b>0</b>	<b>0</b>	<b>0</b>	<b>0</b>	<b>0</b>	<b>0</b>
<b>Native American</b>						

	Success	60%	50%	0%	0%	0%	0%
	Non-Success	20%	0%	0%	0%	100%	100%
	Withdrawal	20%	50%	0%	100%	0%	0%
	Total Percent	100%	100%	0%	100%	100%	100%
	Total Enrolled	<b>5</b>	<b>2</b>	<b>0</b>	<b>1</b>	<b>1</b>	<b>1</b>
<b>Pacific Islander</b>							
	Success	100%	0%	100%	0%	50%	0%
	Non-Success	0%	50%	0%	50%	50%	100%
	Withdrawal	0%	50%	0%	50%	0%	0%
	Total Percent	100%	100%	100%	100%	100%	100%
	Total Enrolled	<b>4</b>	<b>4</b>	<b>1</b>	<b>2</b>	<b>4</b>	<b>1</b>
<b>White</b>							
	Success	62%	55%	53%	61%	55%	67%
	Non-Success	8%	20%	17%	21%	32%	22%
	Withdrawal	31%	25%	30%	18%	14%	11%
	Total Percent	100%	100%	100%	100%	100%	100%
	Total Enrolled	<b>39</b>	<b>40</b>	<b>30</b>	<b>33</b>	<b>22</b>	<b>36</b>