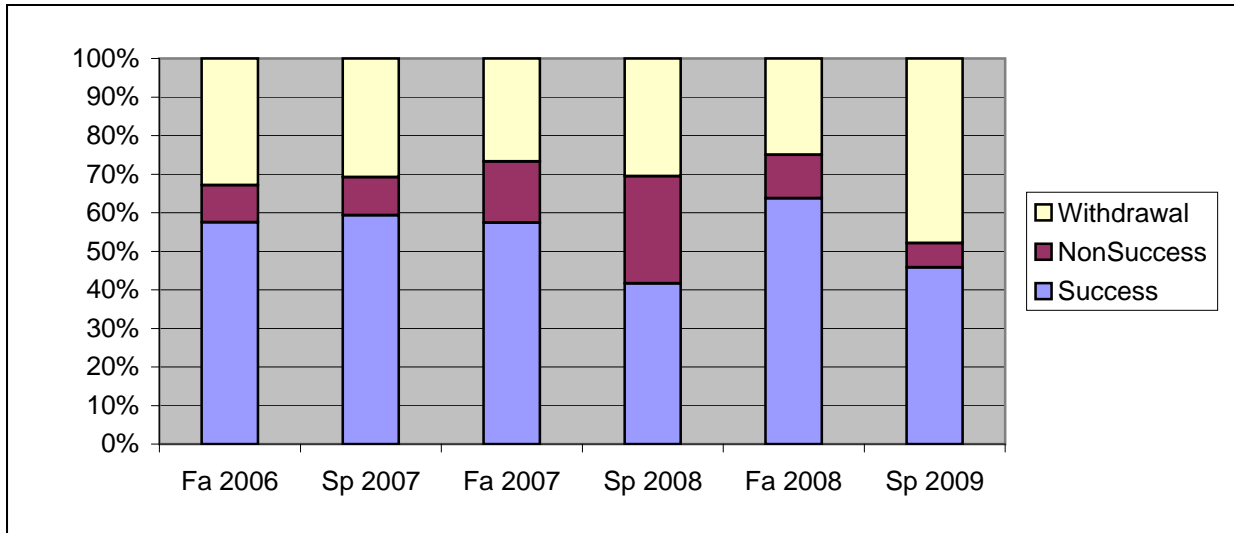
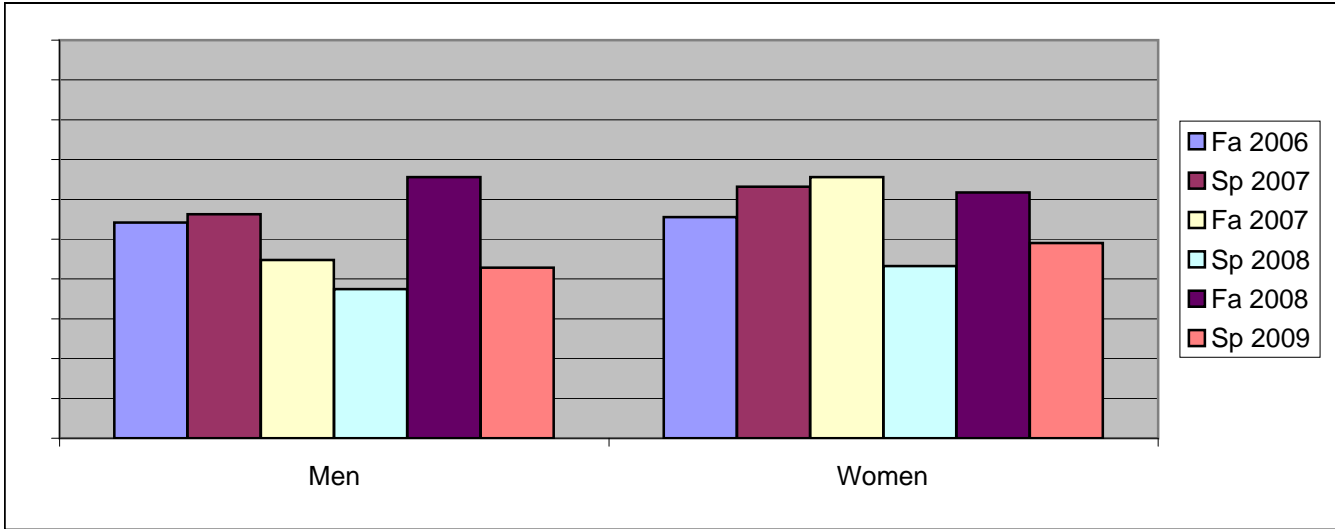


Chabot  
Success, Non-Success, and Withdrawal Rates By Semester  
Course: BUS 22



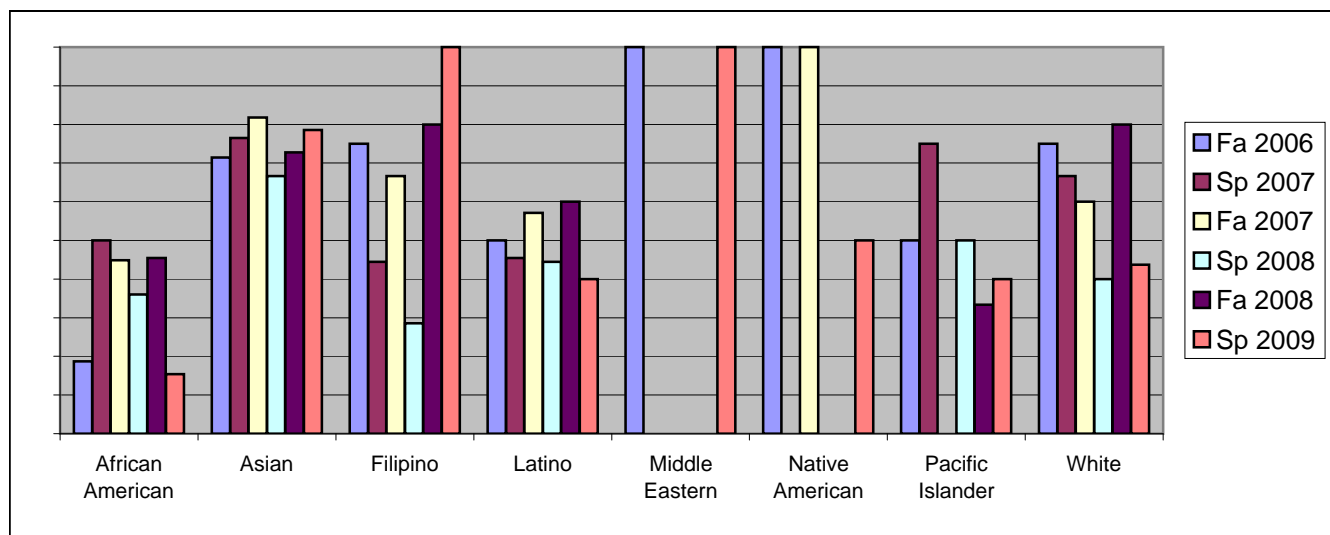
	Fa 2006	Sp 2007	Fa 2007	Sp 2008	Fa 2008	Sp 2009
Success	58%	59%	57%	42%	64%	46%
Non-Success	10%	10%	16%	28%	11%	6%
Withdrawal	33%	31%	27%	31%	25%	48%
Total Percent	100%	100%	100%	100%	100%	100%
Total Enrolled	<b>73</b>	<b>91</b>	<b>101</b>	<b>72</b>	<b>80</b>	<b>96</b>

Chabot  
Success Rates By Gender and Semester  
Course: BUS 22



	Fa 2006	Sp 2007	Fa 2007	Sp 2008	Fa 2008	Sp 2009
<b>Men</b>						
Success	54%	56%	45%	38%	66%	43%
Non-Success	13%	16%	18%	38%	9%	10%
Withdrawal	33%	28%	37%	25%	25%	48%
Total Percent	100%	100%	100%	100%	100%	100%
Total Enrolled	<b>24</b>	<b>32</b>	<b>38</b>	<b>32</b>	<b>32</b>	<b>42</b>
<b>Women</b>						
Success	56%	63%	66%	43%	62%	49%
Non-Success	9%	7%	13%	22%	13%	4%
Withdrawal	36%	30%	21%	35%	26%	47%
Total Percent	100%	100%	100%	100%	100%	100%
Total Enrolled	<b>45</b>	<b>57</b>	<b>61</b>	<b>37</b>	<b>47</b>	<b>53</b>

Chabot  
Success Rates By Ethnicity and Semester  
Course: BUS 22



	Fa 2006	Sp 2007	Fa 2007	Sp 2008	Fa 2008	Sp 2009
<b>African American</b>						
Success	19%	50%	45%	36%	45%	15%
Non-Success	19%	8%	24%	24%	14%	4%
Withdrawal	63%	42%	31%	40%	41%	81%
Total Percent	100%	100%	100%	100%	100%	100%
Total Enrolled	16	24	29	25	22	26
<b>Asian</b>						
Success	71%	76%	82%	67%	73%	79%
Non-Success	0%	0%	9%	11%	9%	0%
Withdrawal	29%	24%	9%	22%	18%	21%
Total Percent	100%	100%	100%	100%	100%	100%
Total Enrolled	14	17	11	9	11	14
<b>Filipino</b>						
Success	75%	44%	67%	29%	80%	100%
Non-Success	0%	33%	17%	57%	20%	0%
Withdrawal	25%	22%	17%	14%	0%	0%
Total Percent	100%	100%	100%	100%	100%	100%
Total Enrolled	4	9	12	7	5	4
<b>Latino</b>						
Success	50%	45%	57%	44%	60%	40%
Non-Success	13%	27%	14%	44%	20%	15%
Withdrawal	38%	27%	29%	11%	20%	45%
Total Percent	100%	100%	100%	100%	100%	100%
Total Enrolled	8	11	14	9	10	20
<b>Middle Eastern</b>						
Success	100%	0%	0%	0%	0%	100%
Non-Success	0%	0%	0%	0%	0%	0%
Withdrawal	0%	0%	0%	0%	0%	0%
Total Percent	100%	0%	0%	0%	0%	100%
Total Enrolled	1	0	0	0	0	1
<b>Native American</b>						

	Success	100%	0%	100%	0%	0%	50%
	Non-Success	0%	0%	0%	0%	0%	0%
	Withdrawal	0%	0%	0%	0%	0%	50%
	Total Percent	100%	0%	100%	0%	0%	100%
	Total Enrolled	<b>1</b>	<b>0</b>	<b>1</b>	<b>0</b>	<b>0</b>	<b>2</b>
<b>Pacific Islander</b>							
	Success	50%	75%	0%	50%	33%	40%
	Non-Success	50%	0%	0%	0%	33%	0%
	Withdrawal	0%	25%	100%	50%	33%	60%
	Total Percent	100%	100%	100%	100%	100%	100%
	Total Enrolled	<b>4</b>	<b>4</b>	<b>1</b>	<b>2</b>	<b>3</b>	<b>5</b>
<b>White</b>							
	Success	75%	67%	60%	40%	80%	44%
	Non-Success	0%	7%	16%	27%	5%	13%
	Withdrawal	25%	27%	24%	33%	15%	44%
	Total Percent	100%	100%	100%	100%	100%	100%
	Total Enrolled	<b>16</b>	<b>15</b>	<b>25</b>	<b>15</b>	<b>20</b>	<b>16</b>