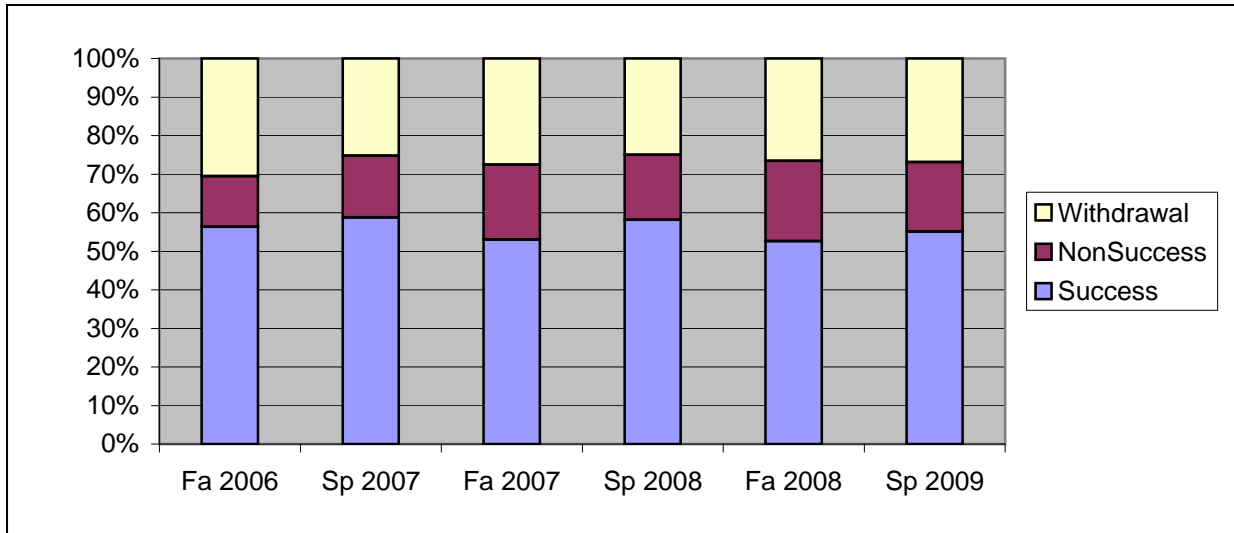
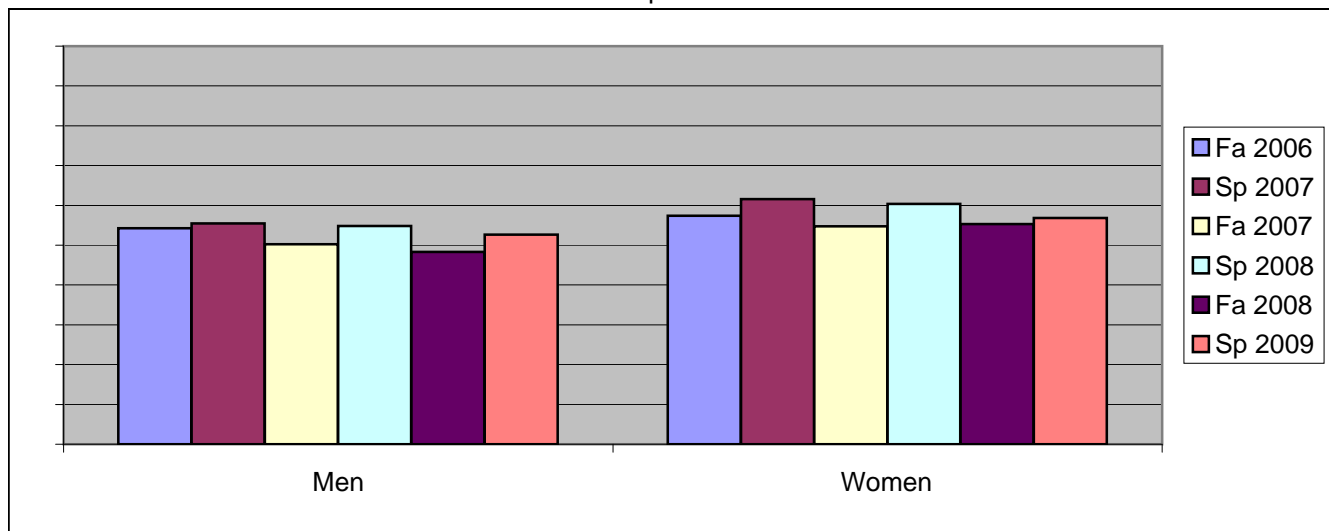


Chabot
Success, Non-Success, and Withdrawal Rates By Semester
Discipline: BUS



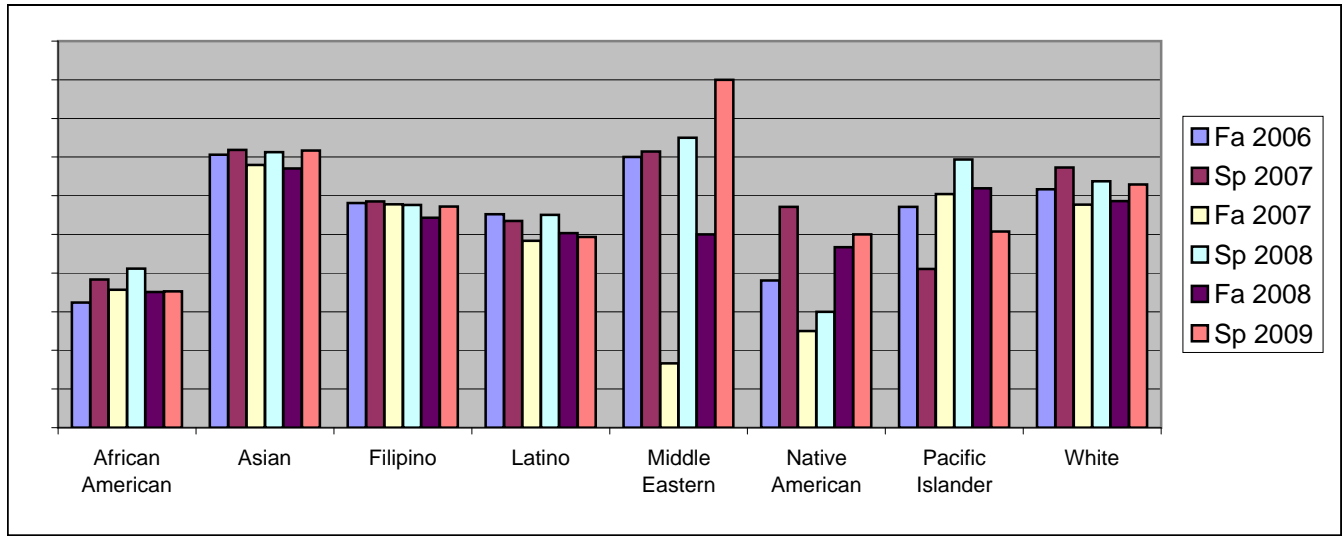
	Fa 2006	Sp 2007	Fa 2007	Sp 2008	Fa 2008	Sp 2009
Success	56%	59%	53%	58%	53%	55%
Non-Success	13%	16%	19%	17%	21%	18%
Withdrawal	31%	25%	28%	25%	27%	27%
Total Percent	100%	100%	100%	100%	100%	100%
Total Enrolled	1,669	1,789	1,929	2,037	2,225	2,314

Chabot
Success Rates By Gender and Semester
Discipline: BUS



	Fa 2006	Sp 2007	Fa 2007	Sp 2008	Fa 2008	Sp 2009
Men						
Success	54%	55%	50%	55%	48%	53%
Non-Success	14%	18%	19%	18%	24%	20%
Withdrawal	31%	26%	31%	27%	28%	28%
Total Percent	100%	100%	100%	100%	100%	100%
Total Enrolled	689	728	724	793	901	936
Women						
Success	57%	62%	55%	60%	55%	57%
Non-Success	12%	15%	20%	16%	19%	17%
Withdrawal	30%	24%	26%	23%	26%	26%
Total Percent	100%	100%	100%	100%	100%	100%
Total Enrolled	949	1,026	1,162	1,195	1,260	1,324

Chabot
Success Rates By Ethnicity and Semester
Discipline: BUS



	Fa 2006	Sp 2007	Fa 2007	Sp 2008	Fa 2008	Sp 2009
African American						
Success	32%	38%	36%	41%	35%	35%
Non-Success	26%	22%	32%	22%	35%	25%
Withdrawal	42%	39%	33%	37%	30%	40%
Total Percent	100%	100%	100%	100%	100%	100%
Total Enrolled	324	287	398	391	464	437
Asian						
Success	71%	72%	68%	71%	67%	72%
Non-Success	6%	10%	8%	12%	12%	11%
Withdrawal	23%	18%	24%	17%	21%	18%
Total Percent	100%	100%	100%	100%	100%	100%
Total Enrolled	401	459	390	449	431	480
Filipino						
Success	58%	59%	58%	58%	54%	57%
Non-Success	10%	16%	17%	19%	15%	16%
Withdrawal	32%	25%	26%	24%	31%	26%
Total Percent	100%	100%	100%	100%	100%	100%
Total Enrolled	129	164	187	198	173	208
Latino						
Success	55%	53%	48%	55%	50%	49%
Non-Success	16%	19%	24%	18%	22%	21%
Withdrawal	29%	27%	27%	27%	28%	29%
Total Percent	100%	100%	100%	100%	100%	100%
Total Enrolled	315	331	333	329	405	434
Middle Eastern						
Success	70%	71%	17%	75%	50%	90%
Non-Success	0%	14%	50%	25%	17%	10%
Withdrawal	30%	14%	33%	0%	33%	0%

Total Percent	100%	100%	100%	100%	100%	100%
Total Enrolled	10	7	6	4	6	10
Native American						
Success	38%	57%	25%	30%	47%	50%
Non-Success	14%	14%	38%	30%	40%	31%
Withdrawal	48%	29%	38%	40%	13%	19%
Total Percent	100%	100%	100%	100%	100%	100%
Total Enrolled	21	14	8	10	15	16
Pacific Islander						
Success	57%	41%	60%	69%	62%	51%
Non-Success	17%	15%	16%	11%	19%	25%
Withdrawal	26%	44%	23%	19%	19%	24%
Total Percent	100%	100%	100%	100%	100%	100%
Total Enrolled	35	39	43	62	84	71
White						
Success	62%	67%	58%	64%	59%	63%
Non-Success	8%	15%	15%	16%	16%	13%
Withdrawal	30%	17%	27%	20%	26%	24%
Total Percent	100%	100%	100%	100%	100%	100%
Total Enrolled	292	327	371	381	406	466