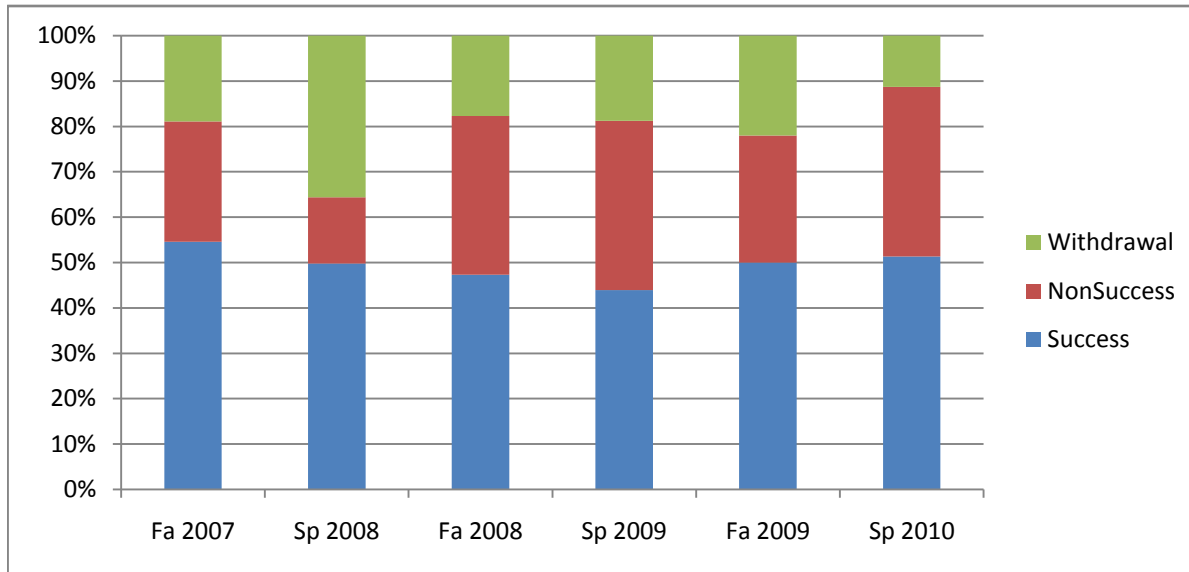


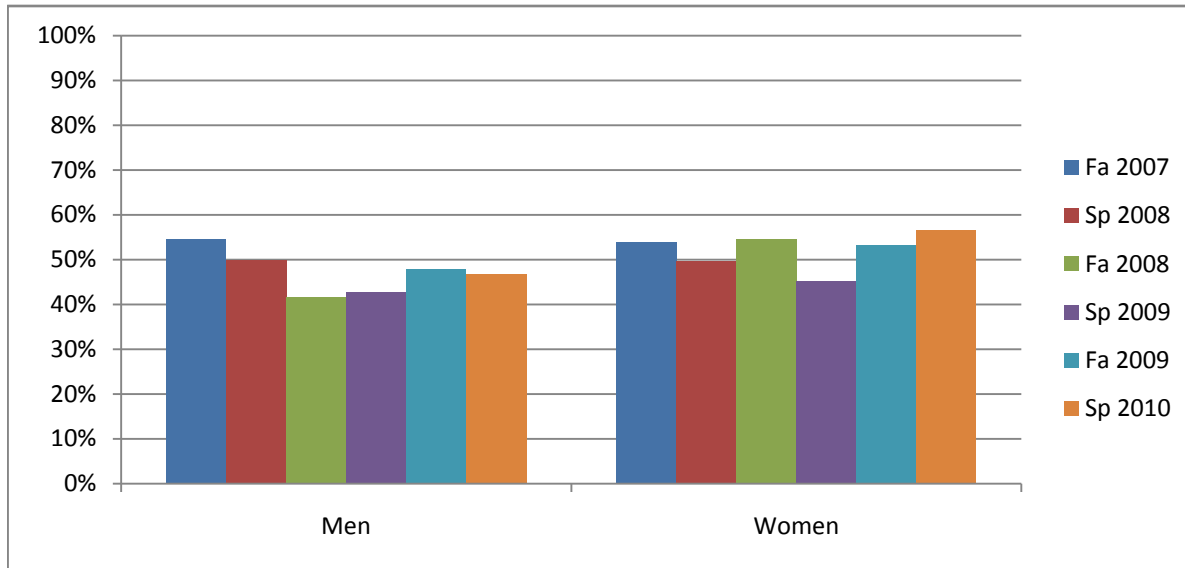
College_Totals_Course

Chabot Success, Non-Success, and Withdrawal Rates By Semester Course: BUS 12



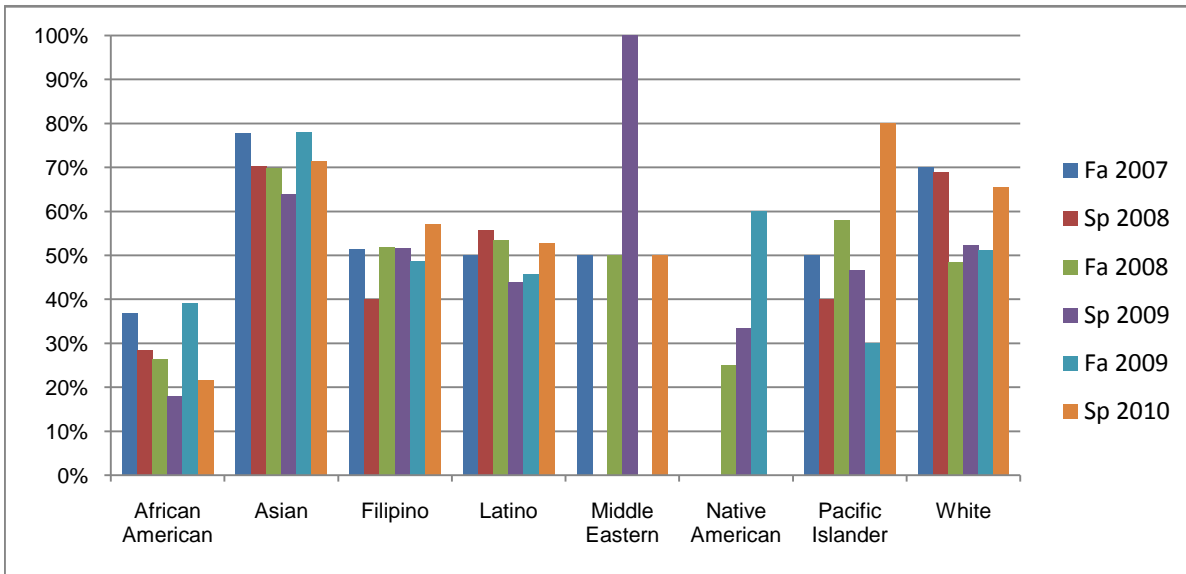
| | Fa 2007 | Sp 2008 | Fa 2008 | Sp 2009 | Fa 2009 | Sp 2010 |
|----------------|------------|------------|------------|------------|------------|------------|
| Success | 55% | 50% | 47% | 44% | 50% | 51% |
| Non-Success | 27% | 15% | 35% | 37% | 28% | 37% |
| Withdrawal | 19% | 36% | 18% | 19% | 22% | 11% |
| Total Percent | 100% | 100% | 100% | 100% | 100% | 100% |
| Total Enrolled | 339 | 275 | 406 | 314 | 414 | 337 |

Chabot
Success Rates By Gender and Semester
Course: BUS 12



| | Fa 2007 | Sp 2008 | Fa 2008 | Sp 2009 | Fa 2009 | Sp 2010 |
|----------------|------------|------------|------------|------------|------------|------------|
| Men | | | | | | |
| Success | 55% | 50% | 42% | 43% | 48% | 47% |
| Non-Success | 27% | 14% | 41% | 38% | 29% | 43% |
| Withdrawal | 18% | 36% | 17% | 19% | 23% | 10% |
| Total Percent | 100% | 100% | 100% | 100% | 100% | 100% |
| Total Enrolled | 165 | 118 | 223 | 175 | 211 | 175 |
| Women | | | | | | |
| Success | 54% | 50% | 55% | 45% | 53% | 57% |
| Non-Success | 25% | 15% | 27% | 36% | 28% | 31% |
| Withdrawal | 21% | 35% | 19% | 18% | 19% | 12% |
| Total Percent | 100% | 100% | 100% | 100% | 100% | 100% |
| Total Enrolled | 165 | 151 | 172 | 137 | 192 | 161 |

Chabot
Success Rates By Ethnicity and Semester
Course: BUS 12



| | Fa 2007 | Sp 2008 | Fa 2008 | Sp 2009 | Fa 2009 | Sp 2010 |
|-------------------------|-----------|-----------|-----------|-----------|------------|-----------|
| African American | | | | | | |
| Success | 37% | 28% | 26% | 18% | 39% | 22% |
| Non-Success | 43% | 20% | 59% | 55% | 35% | 65% |
| Withdrawal | 21% | 51% | 15% | 27% | 26% | 14% |
| Total Percent | 100% | 100% | 100% | 100% | 100% | 100% |
| Total Enrolled | 68 | 74 | 95 | 56 | 115 | 79 |
| Asian | | | | | | |
| Success | 78% | 70% | 70% | 64% | 78% | 71% |
| Non-Success | 7% | 9% | 16% | 20% | 12% | 16% |
| Withdrawal | 16% | 21% | 14% | 16% | 10% | 13% |
| Total Percent | 100% | 100% | 100% | 100% | 100% | 100% |
| Total Enrolled | 45 | 47 | 63 | 50 | 59 | 56 |
| Filipino | | | | | | |
| Success | 51% | 40% | 52% | 52% | 49% | 57% |
| Non-Success | 22% | 27% | 31% | 30% | 32% | 29% |
| Withdrawal | 27% | 33% | 17% | 18% | 19% | 14% |
| Total Percent | 100% | 100% | 100% | 100% | 100% | 100% |
| Total Enrolled | 37 | 15 | 29 | 33 | 37 | 21 |
| Latino | | | | | | |
| Success | 50% | 56% | 53% | 44% | 46% | 53% |
| Non-Success | 34% | 10% | 29% | 40% | 29% | 36% |
| Withdrawal | 16% | 35% | 18% | 16% | 25% | 11% |
| Total Percent | 100% | 100% | 100% | 100% | 100% | 100% |
| Total Enrolled | 86 | 52 | 90 | 89 | 83 | 89 |
| Middle Eastern | | | | | | |
| Success | 50% | 0% | 50% | 100% | 0% | 50% |
| Non-Success | 50% | 0% | 0% | 0% | 0% | 50% |
| Withdrawal | 0% | 0% | 50% | 0% | 0% | 0% |

| | | | | | | |
|-------------------------|-----------|-----------|-----------|-----------|-----------|-----------|
| Total Percent | 100% | 0% | 100% | 100% | 0% | 100% |
| Total Enrolled | 2 | 0 | 2 | 2 | 0 | 2 |
| Native American | | | | | | |
| Success | 0% | 0% | 25% | 33% | 60% | 0% |
| Non-Success | 67% | 0% | 50% | 67% | 40% | 0% |
| Withdrawal | 33% | 100% | 25% | 0% | 0% | 100% |
| Total Percent | 100% | 100% | 100% | 100% | 100% | 100% |
| Total Enrolled | 3 | 1 | 4 | 3 | 5 | 1 |
| Pacific Islander | | | | | | |
| Success | 50% | 40% | 58% | 47% | 30% | 80% |
| Non-Success | 14% | 0% | 16% | 33% | 40% | 10% |
| Withdrawal | 36% | 60% | 26% | 20% | 30% | 10% |
| Total Percent | 100% | 100% | 100% | 100% | 100% | 100% |
| Total Enrolled | 14 | 5 | 19 | 15 | 10 | 10 |
| White | | | | | | |
| Success | 70% | 69% | 48% | 52% | 51% | 66% |
| Non-Success | 16% | 13% | 30% | 28% | 29% | 26% |
| Withdrawal | 14% | 18% | 22% | 20% | 20% | 9% |
| Total Percent | 100% | 100% | 100% | 100% | 100% | 100% |
| Total Enrolled | 50 | 45 | 64 | 46 | 84 | 58 |