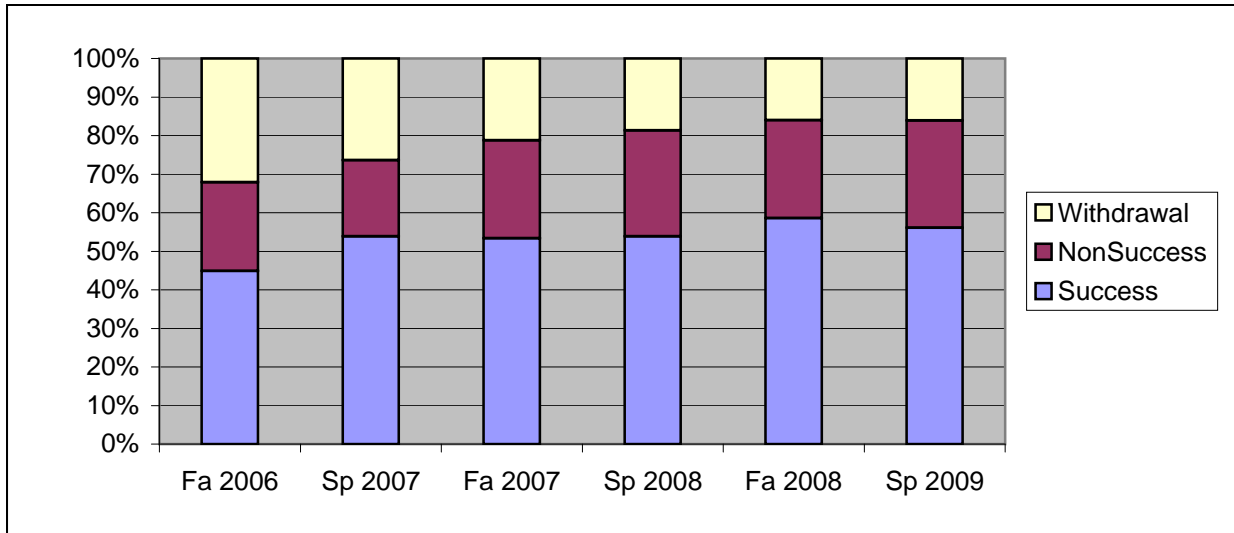
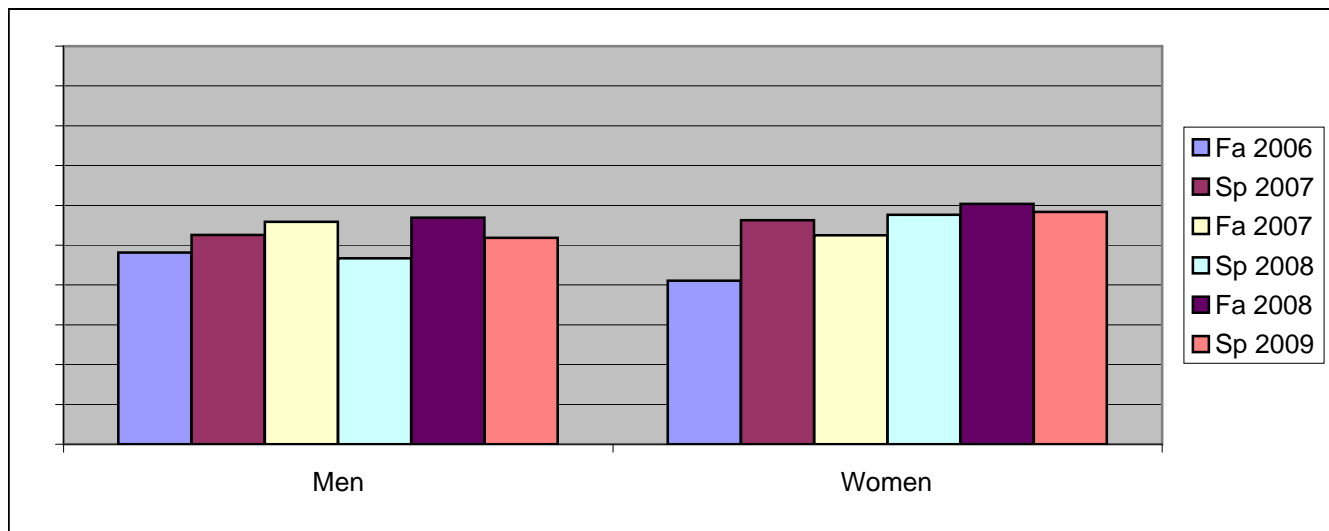


Chabot  
Success, Non-Success, and Withdrawal Rates By Semester  
Course: CAS 50



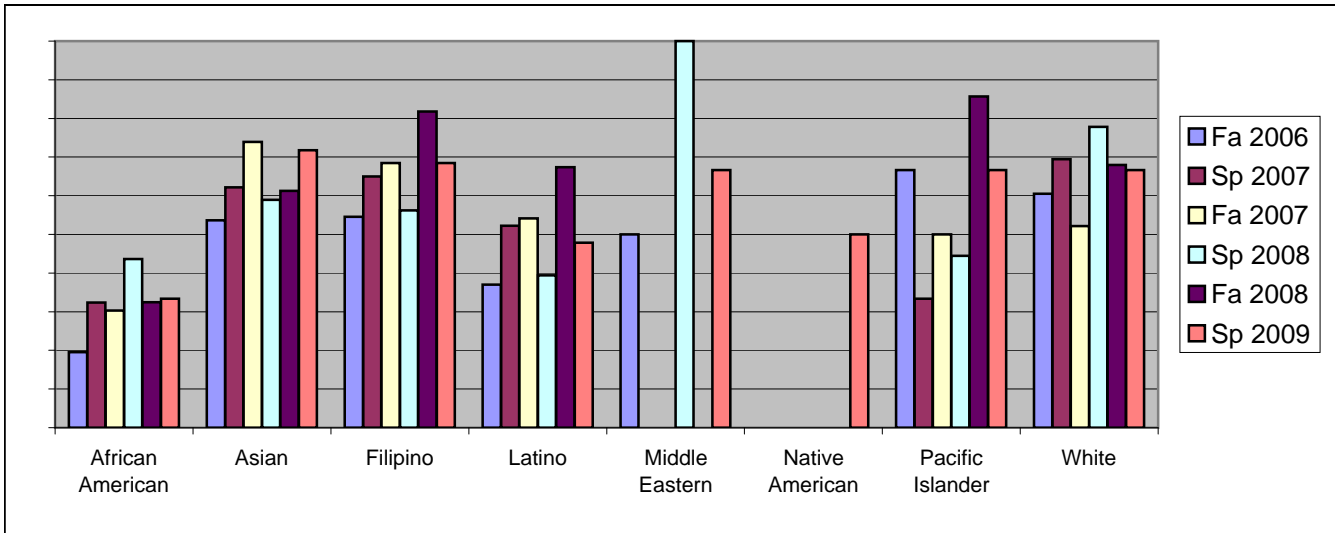
	Fa 2006	Sp 2007	Fa 2007	Sp 2008	Fa 2008	Sp 2009
Success	45%	54%	53%	54%	59%	56%
Non-Success	23%	20%	25%	27%	25%	28%
Withdrawal	32%	26%	21%	19%	16%	16%
Total Percent	100%	100%	100%	100%	100%	100%
Total Enrolled	<b>196</b>	<b>193</b>	<b>193</b>	<b>182</b>	<b>169</b>	<b>180</b>

Chabot  
Success Rates By Gender and Semester  
Course: CAS 50



	Fa 2006	Sp 2007	Fa 2007	Sp 2008	Fa 2008	Sp 2009
<b>Men</b>						
Success	48%	53%	56%	47%	57%	52%
Non-Success	17%	21%	19%	38%	31%	33%
Withdrawal	35%	27%	25%	15%	12%	15%
Total Percent	100%	100%	100%	100%	100%	100%
Total Enrolled	<b>81</b>	<b>78</b>	<b>68</b>	<b>60</b>	<b>58</b>	<b>54</b>
<b>Women</b>						
Success	41%	56%	53%	58%	60%	58%
Non-Success	28%	19%	28%	21%	21%	26%
Withdrawal	31%	25%	20%	21%	19%	16%
Total Percent	100%	100%	100%	100%	100%	100%
Total Enrolled	<b>112</b>	<b>112</b>	<b>120</b>	<b>118</b>	<b>106</b>	<b>120</b>

Chabot  
Success Rates By Ethnicity and Semester  
Course: CAS 50



	Fa 2006	Sp 2007	Fa 2007	Sp 2008	Fa 2008	Sp 2009
<b>African American</b>						
Success	20%	32%	30%	44%	32%	33%
Non-Success	37%	18%	42%	38%	43%	44%
Withdrawal	43%	50%	27%	18%	24%	23%
Total Percent	100%	100%	100%	100%	100%	100%
Total Enrolled	<b>46</b>	<b>34</b>	<b>33</b>	<b>39</b>	<b>37</b>	<b>39</b>
<b>Asian</b>						
Success	54%	62%	74%	59%	61%	72%
Non-Success	20%	22%	9%	21%	16%	18%
Withdrawal	27%	16%	17%	21%	23%	10%
Total Percent	100%	100%	100%	100%	100%	100%
Total Enrolled	<b>41</b>	<b>37</b>	<b>46</b>	<b>39</b>	<b>31</b>	<b>39</b>
<b>Filipino</b>						
Success	55%	65%	68%	56%	82%	68%
Non-Success	14%	5%	5%	31%	18%	16%
Withdrawal	32%	30%	26%	13%	0%	16%
Total Percent	100%	100%	100%	100%	100%	100%
Total Enrolled	<b>22</b>	<b>20</b>	<b>19</b>	<b>16</b>	<b>11</b>	<b>19</b>
<b>Latino</b>						
Success	37%	52%	54%	39%	67%	48%
Non-Success	19%	32%	27%	27%	22%	33%
Withdrawal	44%	16%	19%	33%	11%	20%
Total Percent	100%	100%	100%	100%	100%	100%
Total Enrolled	<b>27</b>	<b>44</b>	<b>48</b>	<b>33</b>	<b>46</b>	<b>46</b>
<b>Middle Eastern</b>						
Success	50%	0%	0%	100%	0%	67%
Non-Success	0%	0%	0%	0%	0%	33%
Withdrawal	50%	0%	100%	0%	0%	0%
Total Percent	100%	0%	100%	100%	0%	100%
Total Enrolled	<b>2</b>	<b>0</b>	<b>1</b>	<b>1</b>	<b>0</b>	<b>3</b>
<b>Native American</b>						
Success	0%	0%	0%	0%	0%	50%
Non-Success	50%	0%	100%	100%	100%	50%
Withdrawal	50%	100%	0%	0%	0%	0%

	Total Percent	100%	100%	100%	100%	100%	100%
	Total Enrolled	<b>2</b>	<b>1</b>	<b>1</b>	<b>1</b>	<b>1</b>	<b>2</b>
<b>Pacific Islander</b>							
	Success	67%	33%	50%	44%	86%	67%
	Non-Success	11%	17%	13%	44%	0%	0%
	Withdrawal	22%	50%	38%	11%	14%	33%
	Total Percent	100%	100%	100%	100%	100%	100%
	Total Enrolled	<b>9</b>	<b>6</b>	<b>8</b>	<b>9</b>	<b>7</b>	<b>3</b>
<b>White</b>							
	Success	61%	69%	52%	78%	68%	67%
	Non-Success	21%	14%	30%	15%	20%	13%
	Withdrawal	18%	17%	17%	7%	12%	20%
	Total Percent	100%	100%	100%	100%	100%	100%
	Total Enrolled	<b>38</b>	<b>36</b>	<b>23</b>	<b>27</b>	<b>25</b>	<b>15</b>