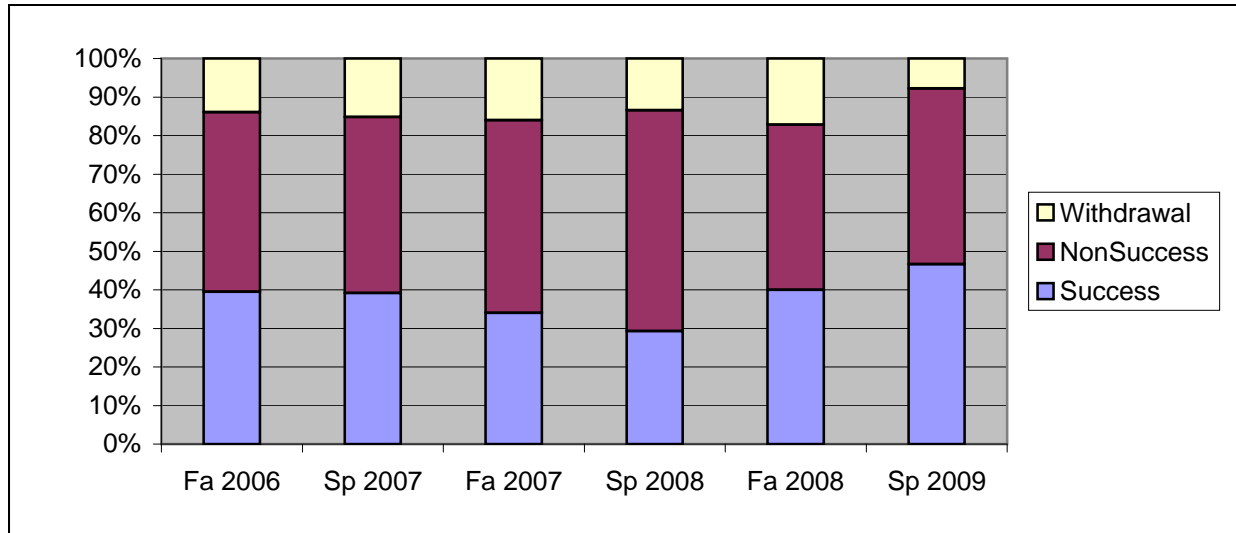
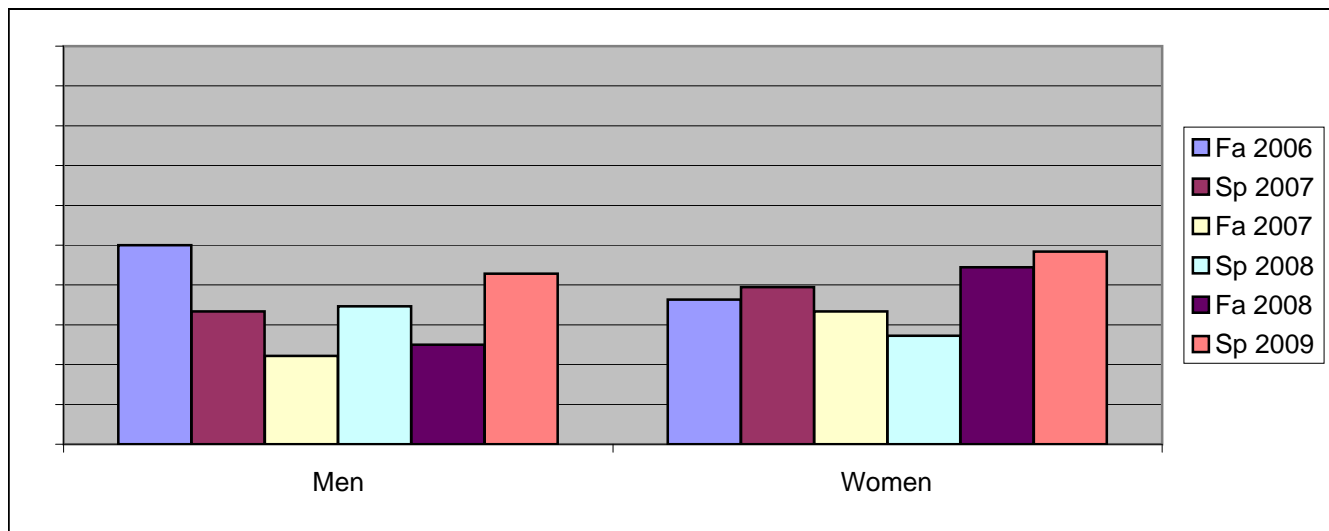


Chabot
Success, Non-Success, and Withdrawal Rates By Semester
Course: CAS 72B



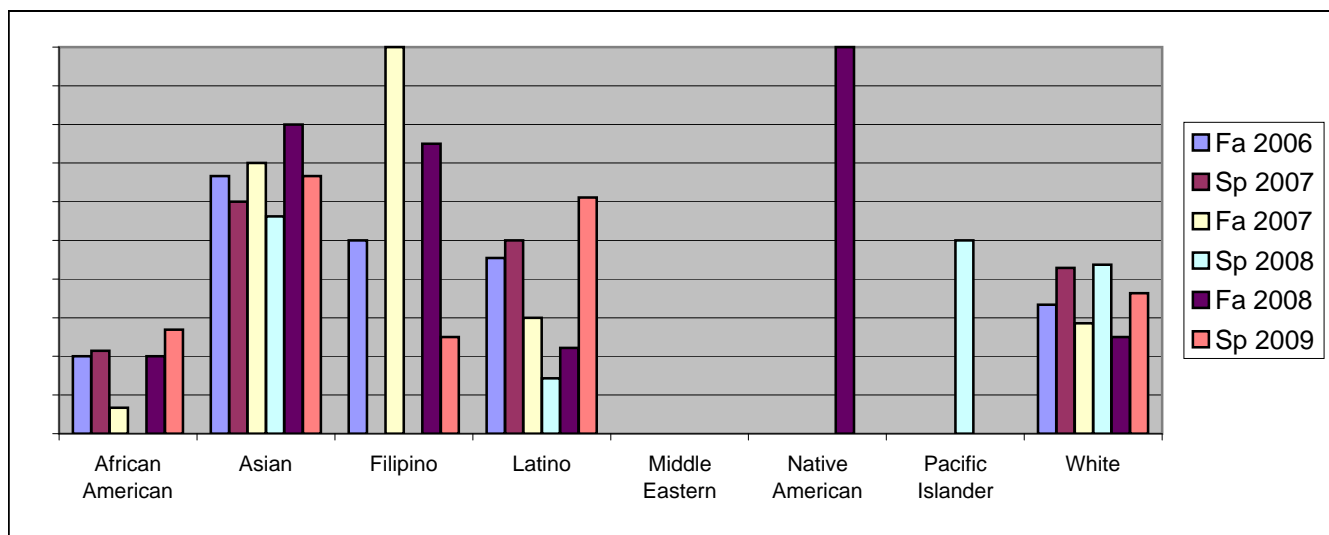
| | Fa 2006 | Sp 2007 | Fa 2007 | Sp 2008 | Fa 2008 | Sp 2009 |
|----------------|-----------|-----------|-----------|-----------|-----------|-----------|
| Success | 40% | 39% | 34% | 29% | 40% | 47% |
| Non-Success | 47% | 46% | 50% | 57% | 43% | 46% |
| Withdrawal | 14% | 15% | 16% | 13% | 17% | 8% |
| Total Percent | 100% | 100% | 100% | 100% | 100% | 100% |
| Total Enrolled | 43 | 46 | 50 | 82 | 35 | 90 |

Chabot
Success Rates By Gender and Semester
Course: CAS 72B



| | Fa 2006 | Sp 2007 | Fa 2007 | Sp 2008 | Fa 2008 | Sp 2009 |
|----------------|-----------|-----------|-----------|-----------|-----------|-----------|
| Men | | | | | | |
| Success | 50% | 33% | 22% | 35% | 25% | 43% |
| Non-Success | 30% | 33% | 33% | 54% | 50% | 54% |
| Withdrawal | 20% | 33% | 44% | 12% | 25% | 4% |
| Total Percent | 100% | 100% | 100% | 100% | 100% | 100% |
| Total Enrolled | 10 | 6 | 9 | 26 | 8 | 28 |
| Women | | | | | | |
| Success | 36% | 39% | 33% | 27% | 44% | 48% |
| Non-Success | 52% | 50% | 56% | 60% | 41% | 42% |
| Withdrawal | 12% | 11% | 10% | 13% | 15% | 10% |
| Total Percent | 100% | 100% | 100% | 100% | 100% | 100% |
| Total Enrolled | 33 | 38 | 39 | 55 | 27 | 62 |

Chabot
Success Rates By Ethnicity and Semester
Course: CAS 72B



| | Fa 2006 | Sp 2007 | Fa 2007 | Sp 2008 | Fa 2008 | Sp 2009 |
|-------------------------|---------|---------|---------|---------|---------|---------|
| African American | | | | | | |
| Success | 20% | 21% | 7% | 0% | 20% | 27% |
| Non-Success | 80% | 64% | 87% | 95% | 60% | 62% |
| Withdrawal | 0% | 14% | 7% | 5% | 20% | 12% |
| Total Percent | 100% | 100% | 100% | 100% | 100% | 100% |
| Total Enrolled | 10 | 14 | 15 | 20 | 10 | 26 |
| Asian | | | | | | |
| Success | 67% | 60% | 70% | 56% | 80% | 67% |
| Non-Success | 33% | 30% | 20% | 25% | 20% | 33% |
| Withdrawal | 0% | 10% | 10% | 19% | 0% | 0% |
| Total Percent | 100% | 100% | 100% | 100% | 100% | 100% |
| Total Enrolled | 9 | 10 | 10 | 16 | 5 | 21 |
| Filipino | | | | | | |
| Success | 50% | 0% | 100% | 0% | 75% | 25% |
| Non-Success | 50% | 0% | 0% | 100% | 25% | 75% |
| Withdrawal | 0% | 0% | 0% | 0% | 0% | 0% |
| Total Percent | 100% | 0% | 100% | 100% | 100% | 100% |
| Total Enrolled | 2 | 0 | 2 | 2 | 4 | 4 |
| Latino | | | | | | |
| Success | 45% | 50% | 30% | 14% | 22% | 61% |
| Non-Success | 36% | 20% | 60% | 57% | 56% | 33% |
| Withdrawal | 18% | 30% | 10% | 29% | 22% | 6% |
| Total Percent | 100% | 100% | 100% | 100% | 100% | 100% |
| Total Enrolled | 11 | 10 | 10 | 14 | 9 | 18 |
| Middle Eastern | | | | | | |
| Success | 0% | 0% | 0% | 0% | 0% | 0% |
| Non-Success | 0% | 0% | 0% | 0% | 0% | 0% |
| Withdrawal | 0% | 0% | 0% | 0% | 0% | 0% |
| Total Percent | 0% | 0% | 0% | 0% | 0% | 0% |
| Total Enrolled | 0 | 0 | 0 | 0 | 0 | 0 |
| Native American | | | | | | |

| | | | | | | | |
|-------------------------|----------------|----------|----------|----------|-----------|----------|-----------|
| | Success | 0% | 0% | 0% | 0% | 100% | 0% |
| | Non-Success | 0% | 0% | 0% | 100% | 0% | 100% |
| | Withdrawal | 0% | 0% | 0% | 0% | 0% | 0% |
| | Total Percent | 0% | 0% | 0% | 100% | 100% | 100% |
| | Total Enrolled | 0 | 0 | 0 | 1 | 1 | 1 |
| Pacific Islander | | | | | | | |
| | Success | 0% | 0% | 0% | 50% | 0% | 0% |
| | Non-Success | 50% | 0% | 0% | 50% | 100% | 0% |
| | Withdrawal | 50% | 0% | 100% | 0% | 0% | 100% |
| | Total Percent | 100% | 0% | 100% | 100% | 100% | 100% |
| | Total Enrolled | 2 | 0 | 1 | 2 | 1 | 1 |
| White | | | | | | | |
| | Success | 33% | 43% | 29% | 44% | 25% | 36% |
| | Non-Success | 33% | 43% | 43% | 50% | 25% | 45% |
| | Withdrawal | 33% | 14% | 29% | 6% | 50% | 18% |
| | Total Percent | 100% | 100% | 100% | 100% | 100% | 100% |
| | Total Enrolled | 6 | 7 | 7 | 16 | 4 | 11 |