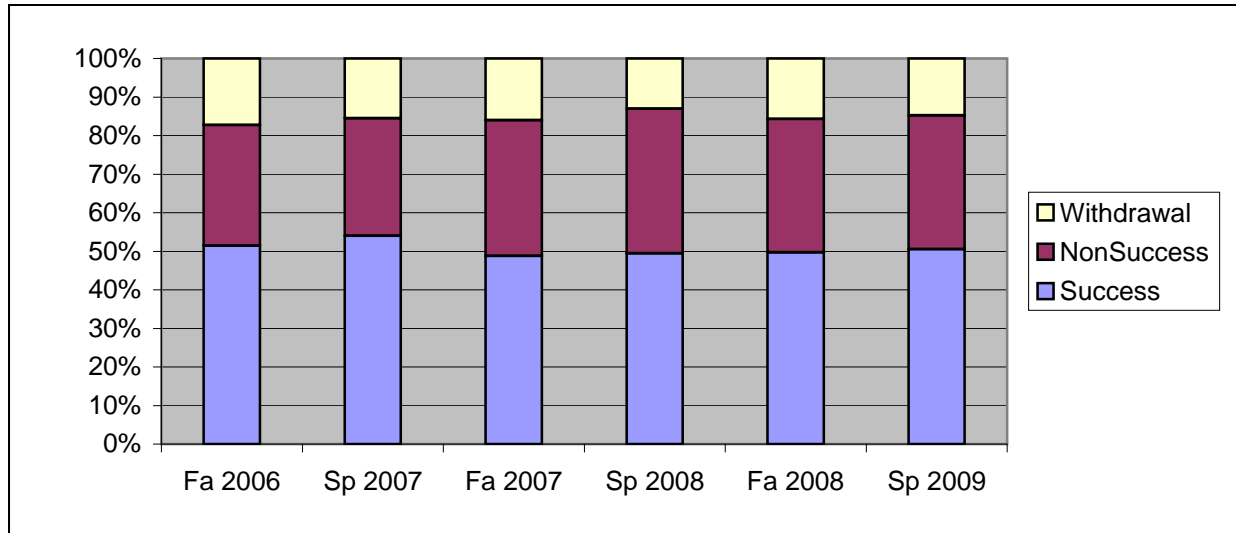
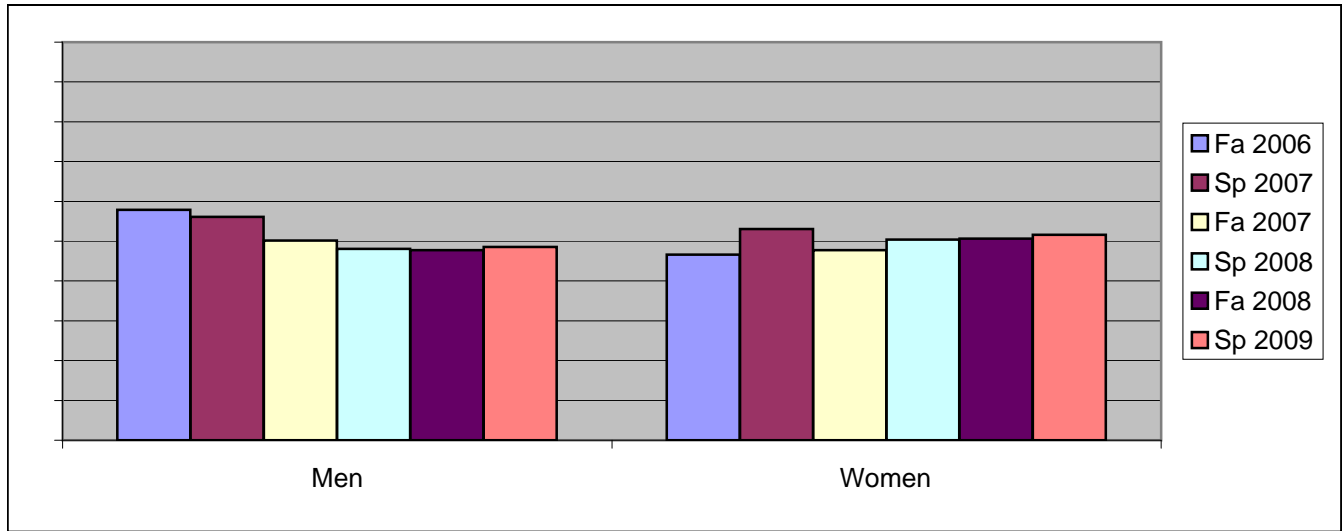


Chabot  
Success, Non-Success, and Withdrawal Rates By Semester  
Discipline: CAS



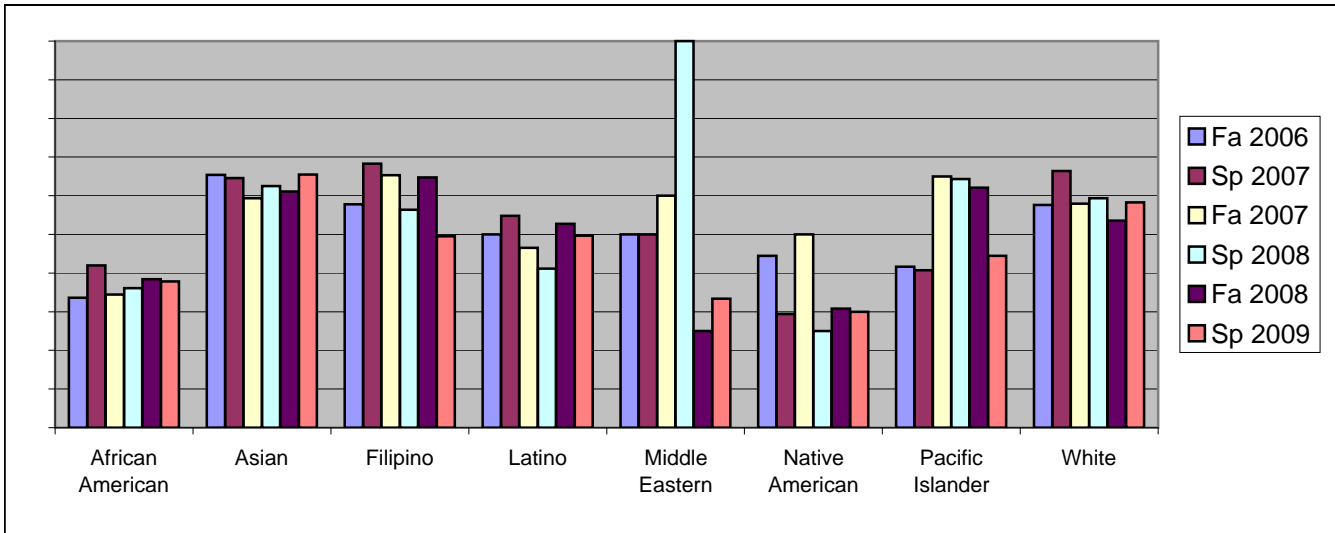
	Fa 2006	Sp 2007	Fa 2007	Sp 2008	Fa 2008	Sp 2009
Success	51%	54%	49%	49%	50%	51%
Non-Success	31%	30%	35%	38%	35%	35%
Withdrawal	17%	16%	16%	13%	16%	15%
Total Percent	100%	100%	100%	100%	100%	100%
Total Enrolled	<b>1,020</b>	<b>1,244</b>	<b>1,181</b>	<b>1,213</b>	<b>1,184</b>	<b>1,429</b>

Chabot  
Success Rates By Gender and Semester  
Discipline: CAS



	Fa 2006	Sp 2007	Fa 2007	Sp 2008	Fa 2008	Sp 2009
<b>Men</b>						
Success	58%	56%	50%	48%	48%	49%
Non-Success	24%	26%	31%	39%	37%	38%
Withdrawal	18%	18%	19%	13%	16%	13%
Total Percent	100%	100%	100%	100%	100%	100%
Total Enrolled	<b>363</b>	<b>378</b>	<b>339</b>	<b>337</b>	<b>358</b>	<b>457</b>
<b>Women</b>						
Success	47%	53%	48%	50%	51%	52%
Non-Success	36%	33%	37%	37%	34%	33%
Withdrawal	17%	14%	15%	13%	16%	15%
Total Percent	100%	100%	100%	100%	100%	100%
Total Enrolled	<b>635</b>	<b>837</b>	<b>812</b>	<b>857</b>	<b>809</b>	<b>949</b>

Chabot  
Success Rates By Ethnicity and Semester  
Discipline: CAS



	Fa 2006	Sp 2007	Fa 2007	Sp 2008	Fa 2008	Sp 2009
<b>African American</b>						
Success	34%	42%	34%	36%	38%	38%
Non-Success	46%	40%	48%	49%	47%	46%
Withdrawal	20%	19%	18%	15%	14%	16%
Total Percent	100%	100%	100%	100%	100%	100%
Total Enrolled	<b>235</b>	<b>329</b>	<b>331</b>	<b>302</b>	<b>367</b>	<b>418</b>
<b>Asian</b>						
Success	65%	65%	59%	63%	61%	66%
Non-Success	19%	26%	25%	21%	19%	24%
Withdrawal	15%	10%	15%	16%	20%	10%
Total Percent	100%	100%	100%	100%	100%	100%
Total Enrolled	<b>185</b>	<b>192</b>	<b>182</b>	<b>168</b>	<b>167</b>	<b>232</b>
<b>Filipino</b>						
Success	58%	68%	65%	56%	65%	49%
Non-Success	27%	17%	19%	27%	26%	33%
Withdrawal	15%	15%	15%	17%	9%	18%
Total Percent	100%	100%	100%	100%	100%	100%
Total Enrolled	<b>71</b>	<b>60</b>	<b>72</b>	<b>71</b>	<b>68</b>	<b>95</b>
<b>Latino</b>						
Success	50%	55%	47%	41%	53%	50%
Non-Success	32%	30%	37%	44%	33%	35%
Withdrawal	18%	15%	17%	15%	15%	15%
Total Percent	100%	100%	100%	100%	100%	100%
Total Enrolled	<b>200</b>	<b>261</b>	<b>232</b>	<b>231</b>	<b>241</b>	<b>274</b>
<b>Middle Eastern</b>						
Success	50%	50%	60%	100%	25%	33%
Non-Success	0%	0%	20%	0%	50%	50%
Withdrawal	50%	50%	20%	0%	25%	17%
Total Percent	100%	100%	100%	100%	100%	100%
Total Enrolled	<b>2</b>	<b>2</b>	<b>5</b>	<b>1</b>	<b>4</b>	<b>6</b>
<b>Native American</b>						
Success	44%	29%	50%	25%	31%	30%
Non-Success	22%	47%	40%	58%	46%	50%
Withdrawal	33%	24%	10%	17%	23%	20%

	Total Percent	100%	100%	100%	100%	100%	100%
	Total Enrolled	<b>9</b>	<b>17</b>	<b>10</b>	<b>12</b>	<b>13</b>	<b>20</b>
<b>Pacific Islander</b>							
	Success	42%	41%	65%	64%	62%	44%
	Non-Success	38%	33%	10%	32%	21%	33%
	Withdrawal	21%	26%	25%	4%	17%	22%
	Total Percent	100%	100%	100%	100%	100%	100%
	Total Enrolled	<b>24</b>	<b>27</b>	<b>20</b>	<b>28</b>	<b>29</b>	<b>18</b>
<b>White</b>							
	Success	58%	66%	58%	59%	54%	58%
	Non-Success	27%	21%	30%	32%	30%	27%
	Withdrawal	16%	13%	12%	8%	17%	15%
	Total Percent	100%	100%	100%	100%	100%	100%
	Total Enrolled	<b>236</b>	<b>259</b>	<b>238</b>	<b>295</b>	<b>211</b>	<b>259</b>