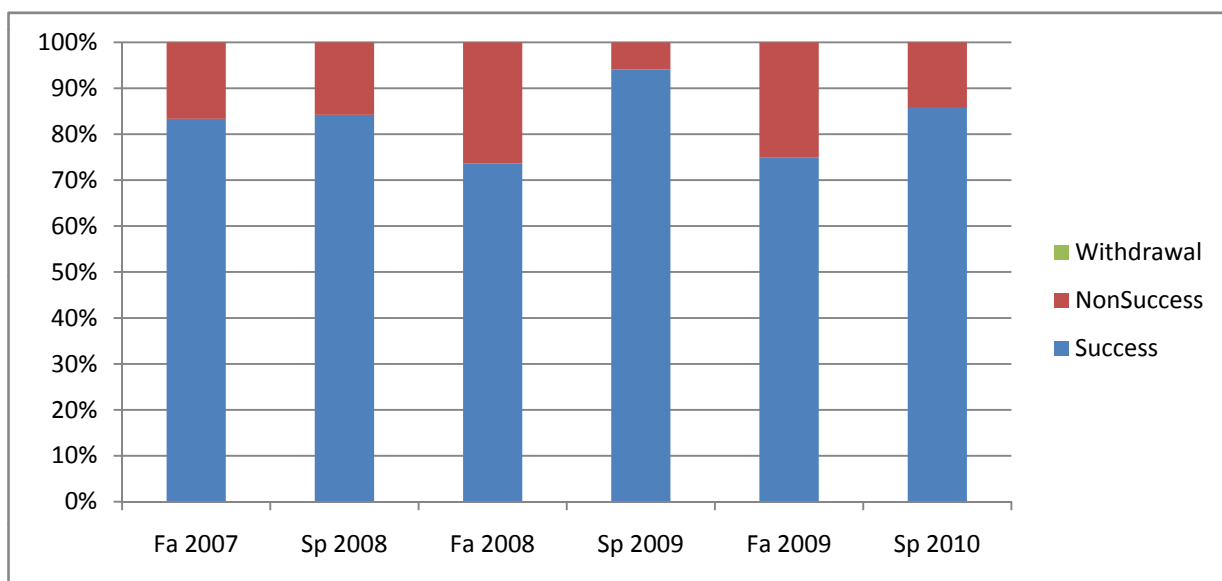
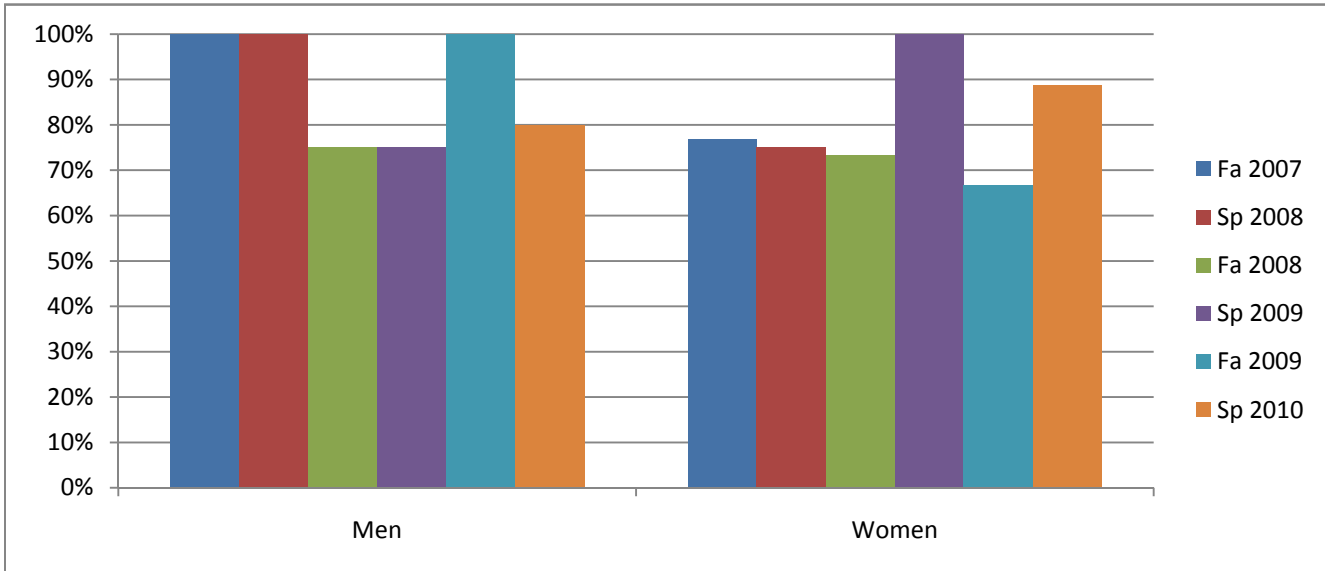


Chabot  
Success, Non-Success, and Withdrawal Rates By Semester  
Course: CAS 61



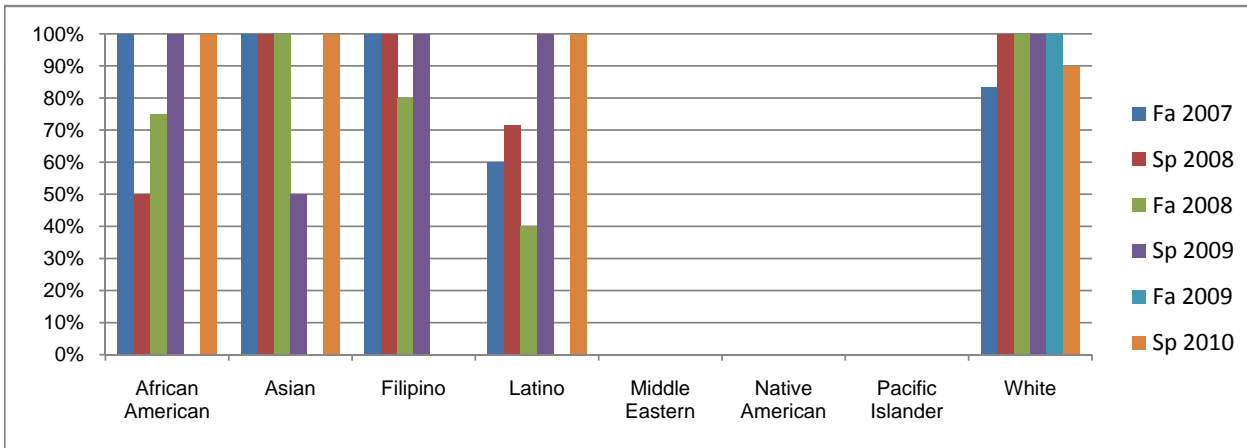
|                | Fa 2007 | Sp 2008 | Fa 2008 | Sp 2009 | Fa 2009 | Sp 2010 |
|----------------|---------|---------|---------|---------|---------|---------|
| Success        | 83%     | 84%     | 74%     | 94%     | 75%     | 86%     |
| Non-Success    | 17%     | 16%     | 26%     | 6%      | 25%     | 14%     |
| Withdrawal     | 0%      | 0%      | 0%      | 0%      | 0%      | 0%      |
| Total Percent  | 100%    | 100%    | 100%    | 100%    | 100%    | 100%    |
| Total Enrolled | 18      | 19      | 19      | 17      | 4       | 14      |

Chabot  
Success Rates By Gender and Semester  
Course: CAS 61



|                | Fa 2007 | Sp 2008 | Fa 2008 | Sp 2009 | Fa 2009 | Sp 2010 |
|----------------|---------|---------|---------|---------|---------|---------|
| <b>Men</b>     |         |         |         |         |         |         |
| Success        | 100%    | 100%    | 75%     | 75%     | 100%    | 80%     |
| Non-Success    | 0%      | 0%      | 25%     | 25%     | 0%      | 20%     |
| Withdrawal     | 0%      | 0%      | 0%      | 0%      | 0%      | 0%      |
| Total Percent  | 100%    | 100%    | 100%    | 100%    | 100%    | 100%    |
| Total Enrolled | 5       | 7       | 4       | 4       | 1       | 5       |
| <b>Women</b>   |         |         |         |         |         |         |
| Success        | 77%     | 75%     | 73%     | 100%    | 67%     | 89%     |
| Non-Success    | 23%     | 25%     | 27%     | 0%      | 33%     | 11%     |
| Withdrawal     | 0%      | 0%      | 0%      | 0%      | 0%      | 0%      |
| Total Percent  | 100%    | 100%    | 100%    | 100%    | 100%    | 100%    |
| Total Enrolled | 13      | 12      | 15      | 13      | 3       | 9       |

Chabot  
Success Rates By Ethnicity and Semester  
Course: CAS 61



|                         | Fa 2007 | Sp 2008 | Fa 2008 | Sp 2009 | Fa 2009 | Sp 2010 |
|-------------------------|---------|---------|---------|---------|---------|---------|
| <b>African American</b> |         |         |         |         |         |         |
| Success                 | 100%    | 50%     | 75%     | 100%    | 0%      | 100%    |
| Non-Success             | 0%      | 50%     | 25%     | 0%      | 100%    | 0%      |
| Withdrawal              | 0%      | 0%      | 0%      | 0%      | 0%      | 0%      |
| Total Percent           | 100%    | 100%    | 100%    | 100%    | 100%    | 100%    |
| Total Enrolled          | 2       | 2       | 4       | 3       | 1       | 1       |
| <b>Asian</b>            |         |         |         |         |         |         |
| Success                 | 100%    | 100%    | 100%    | 50%     | 0%      | 100%    |
| Non-Success             | 0%      | 0%      | 0%      | 50%     | 0%      | 0%      |
| Withdrawal              | 0%      | 0%      | 0%      | 0%      | 0%      | 0%      |
| Total Percent           | 100%    | 100%    | 100%    | 100%    | 0%      | 100%    |
| Total Enrolled          | 1       | 2       | 1       | 2       | 0       | 1       |
| <b>Filipino</b>         |         |         |         |         |         |         |
| Success                 | 100%    | 100%    | 80%     | 100%    | 0%      | 0%      |
| Non-Success             | 0%      | 0%      | 20%     | 0%      | 0%      | 100%    |
| Withdrawal              | 0%      | 0%      | 0%      | 0%      | 0%      | 0%      |
| Total Percent           | 100%    | 100%    | 100%    | 100%    | 0%      | 100%    |
| Total Enrolled          | 4       | 3       | 5       | 3       | 0       | 1       |
| <b>Latino</b>           |         |         |         |         |         |         |
| Success                 | 60%     | 71%     | 40%     | 100%    | 0%      | 100%    |
| Non-Success             | 40%     | 29%     | 60%     | 0%      | 0%      | 0%      |
| Withdrawal              | 0%      | 0%      | 0%      | 0%      | 0%      | 0%      |
| Total Percent           | 100%    | 100%    | 100%    | 100%    | 0%      | 100%    |
| Total Enrolled          | 5       | 7       | 5       | 2       | 0       | 1       |
| <b>Middle Eastern</b>   |         |         |         |         |         |         |
| Success                 | 0%      | 0%      | 0%      | 0%      | 0%      | 0%      |
| Non-Success             | 0%      | 0%      | 0%      | 0%      | 0%      | 0%      |
| Withdrawal              | 0%      | 0%      | 0%      | 0%      | 0%      | 0%      |
| Total Percent           | 0%      | 0%      | 0%      | 0%      | 0%      | 0%      |
| Total Enrolled          | 0       | 0       | 0       | 0       | 0       | 0       |
| <b>Native American</b>  |         |         |         |         |         |         |
| Success                 | 0%      | 0%      | 0%      | 0%      | 0%      | 0%      |
| Non-Success             | 0%      | 0%      | 0%      | 0%      | 0%      | 0%      |
| Withdrawal              | 0%      | 0%      | 0%      | 0%      | 0%      | 0%      |
| Total Percent           | 0%      | 0%      | 0%      | 0%      | 0%      | 0%      |
| Total Enrolled          | 0       | 0       | 0       | 0       | 0       | 0       |
| <b>Pacific Islander</b> |         |         |         |         |         |         |
| Success                 | 0%      | 0%      | 0%      | 0%      | 0%      | 0%      |
| Non-Success             | 0%      | 0%      | 0%      | 0%      | 0%      | 0%      |
| Withdrawal              | 0%      | 0%      | 0%      | 0%      | 0%      | 0%      |
| Total Percent           | 0%      | 0%      | 0%      | 0%      | 0%      | 0%      |
| Total Enrolled          | 0       | 0       | 0       | 0       | 0       | 0       |
| <b>White</b>            |         |         |         |         |         |         |
| Success                 | 83%     | 100%    | 100%    | 100%    | 100%    | 90%     |
| Non-Success             | 17%     | 0%      | 0%      | 0%      | 0%      | 10%     |
| Withdrawal              | 0%      | 0%      | 0%      | 0%      | 0%      | 0%      |
| Total Percent           | 100%    | 100%    | 100%    | 100%    | 100%    | 100%    |
| Total Enrolled          | 6       | 4       | 4       | 7       | 3       | 10      |