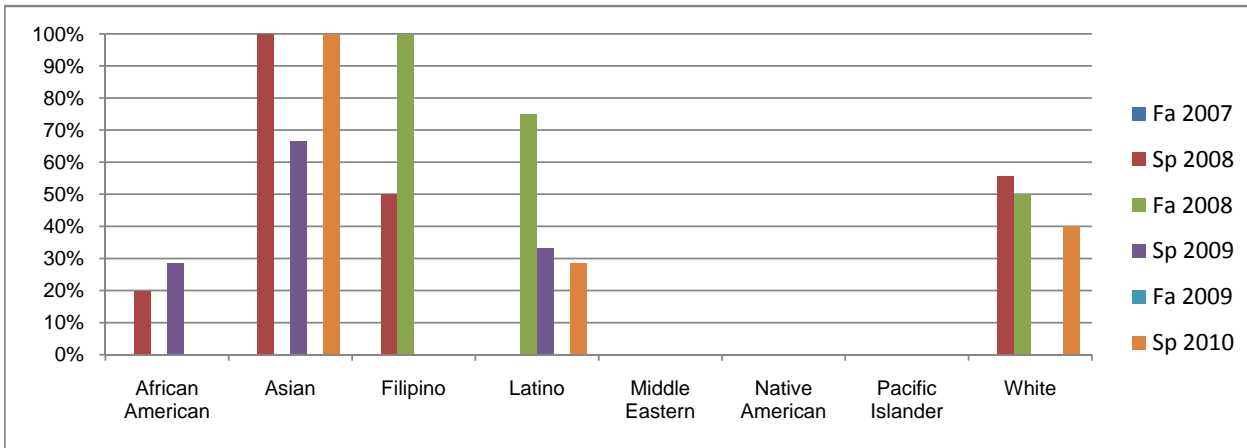
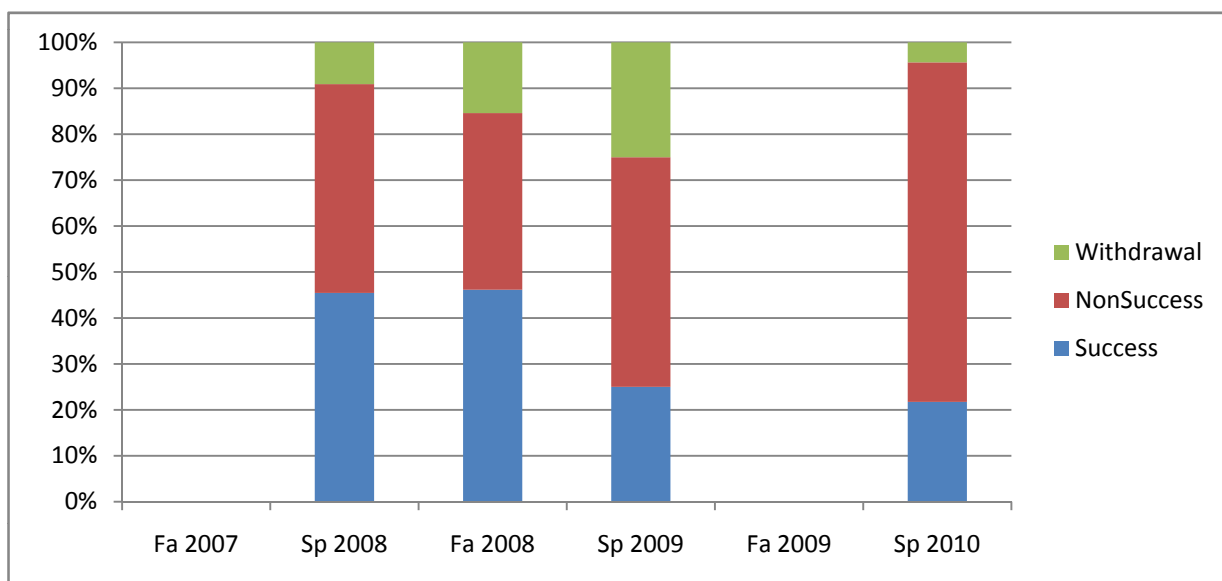


Chabot
Success Rates By Ethnicity and Semester
Course: CAS 72L



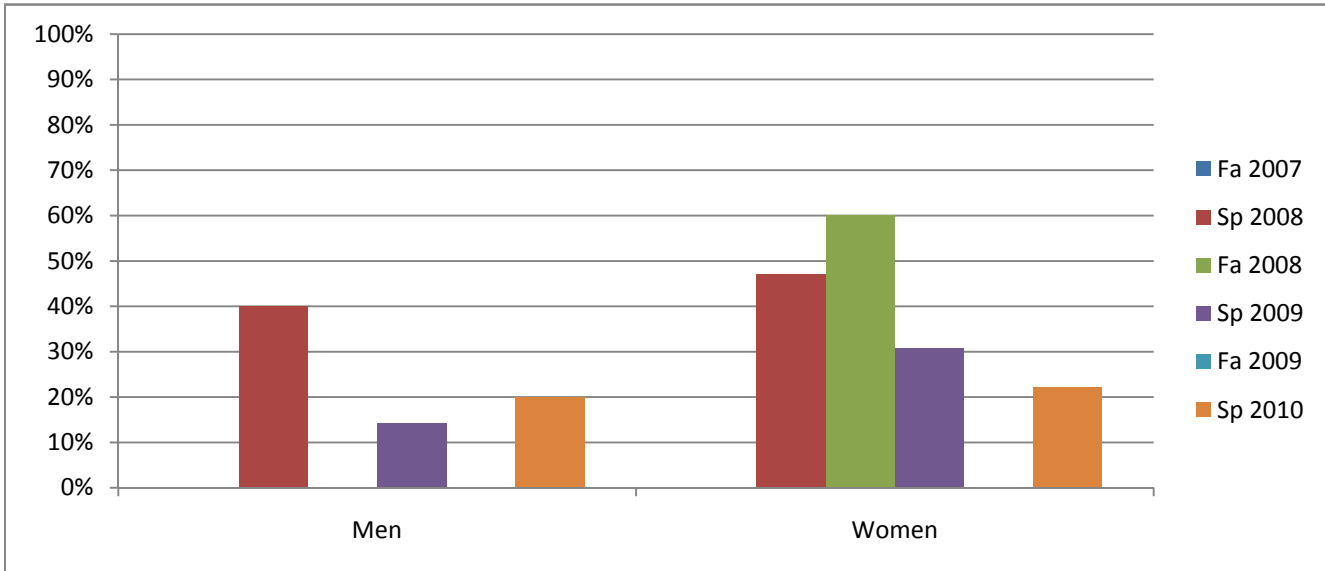
| | Fa 2007 | Sp 2008 | Fa 2008 | Sp 2009 | Fa 2009 | Sp 2010 |
|-------------------------|---------|---------|---------|---------|---------|---------|
| African American | | | | | | |
| Success | 0% | 20% | 0% | 29% | 0% | 0% |
| Non-Success | 0% | 80% | 67% | 29% | 0% | 100% |
| Withdrawal | 0% | 0% | 33% | 43% | 0% | 0% |
| Total Percent | 0% | 100% | 100% | 100% | 0% | 100% |
| Total Enrolled | 0 | 5 | 3 | 7 | 0 | 8 |
| Asian | | | | | | |
| Success | 0% | 100% | 0% | 67% | 0% | 100% |
| Non-Success | 0% | 0% | 100% | 33% | 0% | 0% |
| Withdrawal | 0% | 0% | 0% | 0% | 0% | 0% |
| Total Percent | 0% | 100% | 100% | 100% | 0% | 100% |
| Total Enrolled | 0 | 3 | 1 | 3 | 0 | 1 |
| Filipino | | | | | | |
| Success | 0% | 50% | 100% | 0% | 0% | 0% |
| Non-Success | 0% | 50% | 0% | 100% | 0% | 0% |
| Withdrawal | 0% | 0% | 0% | 0% | 0% | 0% |
| Total Percent | 0% | 100% | 100% | 100% | 0% | 0% |
| Total Enrolled | 0 | 2 | 1 | 4 | 0 | 0 |
| Latino | | | | | | |
| Success | 0% | 0% | 75% | 33% | 0% | 29% |
| Non-Success | 0% | 100% | 25% | 67% | 0% | 57% |
| Withdrawal | 0% | 0% | 0% | 0% | 0% | 14% |
| Total Percent | 0% | 100% | 100% | 100% | 0% | 100% |
| Total Enrolled | 0 | 2 | 4 | 3 | 0 | 7 |
| Middle Eastern | | | | | | |
| Success | 0% | 0% | 0% | 0% | 0% | 0% |
| Non-Success | 0% | 0% | 0% | 0% | 0% | 0% |
| Withdrawal | 0% | 0% | 0% | 0% | 0% | 0% |
| Total Percent | 0% | 0% | 0% | 0% | 0% | 0% |
| Total Enrolled | 0 | 0 | 0 | 0 | 0 | 0 |
| Native American | | | | | | |
| Success | 0% | 0% | 0% | 0% | 0% | 0% |
| Non-Success | 0% | 0% | 0% | 100% | 0% | 0% |
| Withdrawal | 0% | 0% | 0% | 0% | 0% | 0% |
| Total Percent | 0% | 0% | 0% | 100% | 0% | 0% |
| Total Enrolled | 0 | 0 | 0 | 1 | 0 | 0 |
| Pacific Islander | | | | | | |
| Success | 0% | 0% | 0% | 0% | 0% | 0% |
| Non-Success | 0% | 0% | 0% | 0% | 0% | 0% |
| Withdrawal | 0% | 0% | 0% | 0% | 0% | 0% |
| Total Percent | 0% | 0% | 0% | 0% | 0% | 0% |
| Total Enrolled | 0 | 0 | 0 | 0 | 0 | 0 |
| White | | | | | | |
| Success | 0% | 56% | 50% | 0% | 0% | 40% |
| Non-Success | 0% | 33% | 0% | 0% | 0% | 60% |
| Withdrawal | 0% | 11% | 50% | 100% | 0% | 0% |
| Total Percent | 0% | 100% | 100% | 100% | 0% | 100% |
| Total Enrolled | 0 | 9 | 2 | 2 | 0 | 5 |

Chabot
Success, Non-Success, and Withdrawal Rates By Semester
Course: CAS 72L



| | Fa 2007 | Sp 2008 | Fa 2008 | Sp 2009 | Fa 2009 | Sp 2010 |
|----------------|----------|-----------|-----------|-----------|----------|-----------|
| Success | 0% | 45% | 46% | 25% | 0% | 22% |
| Non-Success | 0% | 45% | 38% | 50% | 0% | 74% |
| Withdrawal | 0% | 9% | 15% | 25% | 0% | 4% |
| Total Percent | 0% | 100% | 100% | 100% | 0% | 100% |
| Total Enrolled | 0 | 22 | 13 | 20 | 0 | 23 |

Chabot
Success Rates By Gender and Semester
Course: CAS 72L



| | Fa 2007 | Sp 2008 | Fa 2008 | Sp 2009 | Fa 2009 | Sp 2010 |
|----------------|---------|---------|---------|---------|---------|---------|
| Men | | | | | | |
| Success | 0% | 40% | 0% | 14% | 0% | 20% |
| Non-Success | 0% | 60% | 33% | 57% | 0% | 80% |
| Withdrawal | 0% | 0% | 67% | 29% | 0% | 0% |
| Total Percent | 0% | 100% | 100% | 100% | 0% | 100% |
| Total Enrolled | 0 | 5 | 3 | 7 | 0 | 5 |
| Women | | | | | | |
| Success | 0% | 47% | 60% | 31% | 0% | 22% |
| Non-Success | 0% | 41% | 40% | 46% | 0% | 72% |
| Withdrawal | 0% | 12% | 0% | 23% | 0% | 6% |
| Total Percent | 0% | 100% | 100% | 100% | 0% | 100% |
| Total Enrolled | 0 | 17 | 10 | 13 | 0 | 18 |