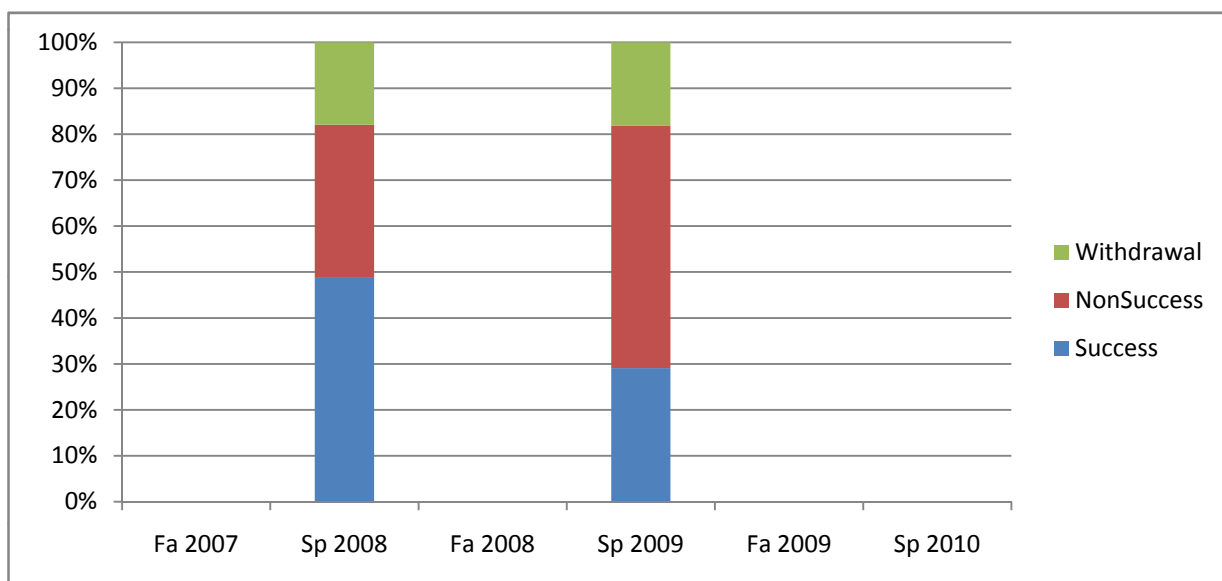
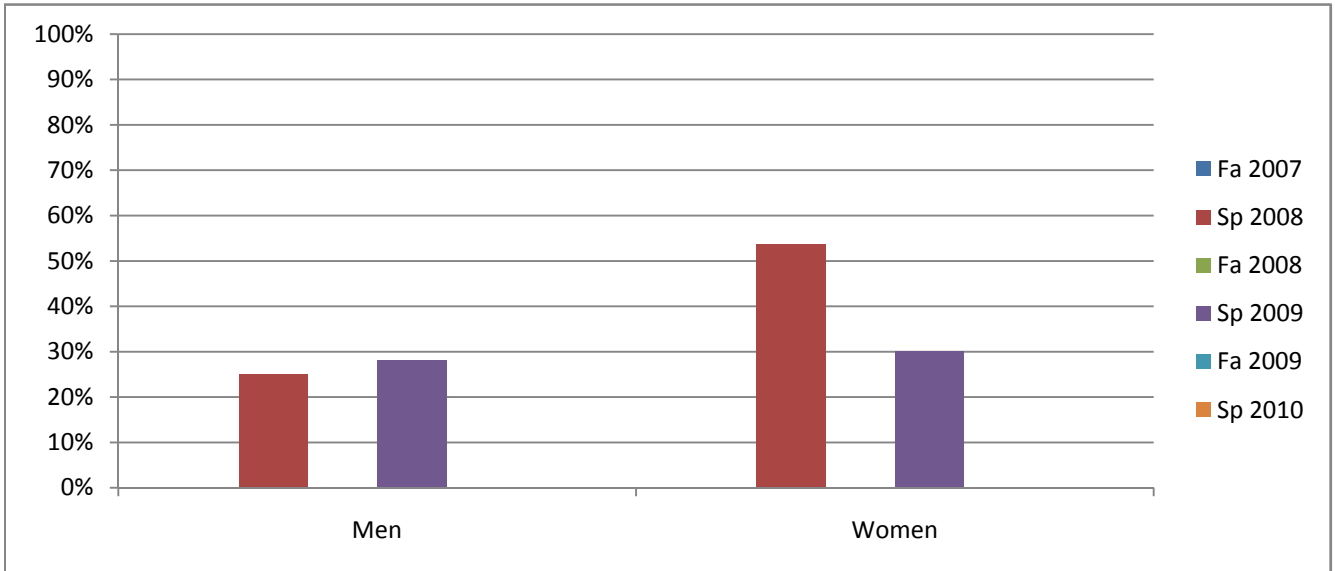


Chabot
Success, Non-Success, and Withdrawal Rates By Semester
Course: CAS 84



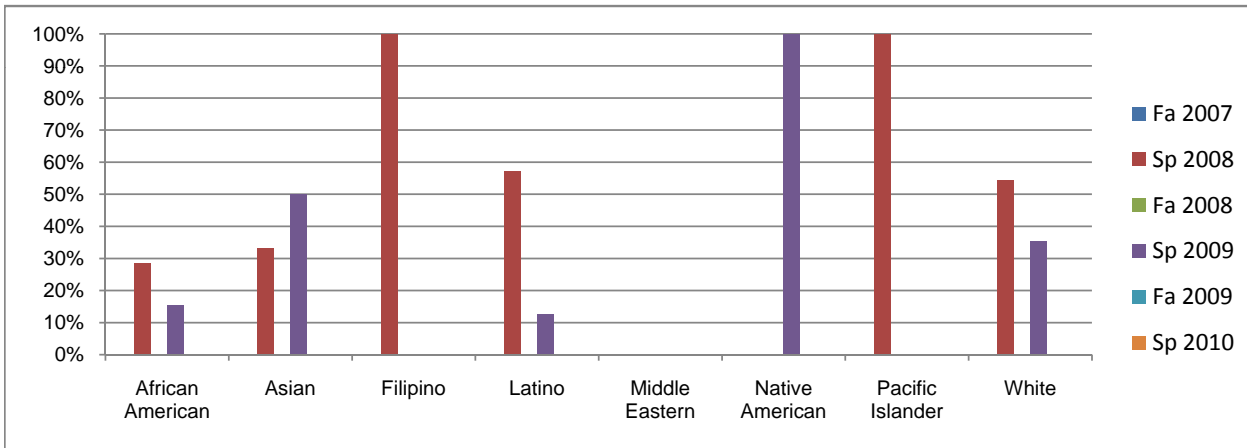
| | Fa 2007 | Sp 2008 | Fa 2008 | Sp 2009 | Fa 2009 | Sp 2010 |
|----------------|----------|-----------|----------|-----------|----------|----------|
| Success | 0% | 49% | 0% | 29% | 0% | 0% |
| Non-Success | 0% | 33% | 0% | 53% | 0% | 0% |
| Withdrawal | 0% | 18% | 0% | 18% | 0% | 0% |
| Total Percent | 0% | 100% | 0% | 100% | 0% | 0% |
| Total Enrolled | 0 | 39 | 0 | 55 | 0 | 0 |

Chabot
Success Rates By Gender and Semester
Course: CAS 84



| | Fa 2007 | Sp 2008 | Fa 2008 | Sp 2009 | Fa 2009 | Sp 2010 |
|----------------|---------|---------|---------|---------|---------|---------|
| Men | | | | | | |
| Success | 0% | 25% | 0% | 28% | 0% | 0% |
| Non-Success | 0% | 63% | 0% | 60% | 0% | 0% |
| Withdrawal | 0% | 13% | 0% | 12% | 0% | 0% |
| Total Percent | 0% | 100% | 0% | 100% | 0% | 0% |
| Total Enrolled | 0 | 8 | 0 | 25 | 0 | 0 |
| Women | | | | | | |
| Success | 0% | 54% | 0% | 30% | 0% | 0% |
| Non-Success | 0% | 25% | 0% | 47% | 0% | 0% |
| Withdrawal | 0% | 21% | 0% | 23% | 0% | 0% |
| Total Percent | 0% | 100% | 0% | 100% | 0% | 0% |
| Total Enrolled | 0 | 28 | 0 | 30 | 0 | 0 |

Chabot
Success Rates By Ethnicity and Semester
Course: CAS 84



| | Fa 2007 | Sp 2008 | Fa 2008 | Sp 2009 | Fa 2009 | Sp 2010 |
|-------------------------|---------|---------|---------|---------|---------|---------|
| African American | | | | | | |
| Success | 0% | 29% | 0% | 15% | 0% | 0% |
| Non-Success | 0% | 50% | 0% | 77% | 0% | 0% |
| Withdrawal | 0% | 21% | 0% | 8% | 0% | 0% |
| Total Percent | 0% | 100% | 0% | 100% | 0% | 0% |
| Total Enrolled | 0 | 14 | 0 | 13 | 0 | 0 |
| Asian | | | | | | |
| Success | 0% | 33% | 0% | 50% | 0% | 0% |
| Non-Success | 0% | 33% | 0% | 50% | 0% | 0% |
| Withdrawal | 0% | 33% | 0% | 0% | 0% | 0% |
| Total Percent | 0% | 100% | 0% | 100% | 0% | 0% |
| Total Enrolled | 0 | 3 | 0 | 8 | 0 | 0 |
| Filipino | | | | | | |
| Success | 0% | 100% | 0% | 0% | 0% | 0% |
| Non-Success | 0% | 0% | 0% | 33% | 0% | 0% |
| Withdrawal | 0% | 0% | 0% | 67% | 0% | 0% |
| Total Percent | 0% | 100% | 0% | 100% | 0% | 0% |
| Total Enrolled | 0 | 1 | 0 | 3 | 0 | 0 |
| Latino | | | | | | |
| Success | 0% | 57% | 0% | 13% | 0% | 0% |
| Non-Success | 0% | 0% | 0% | 63% | 0% | 0% |
| Withdrawal | 0% | 43% | 0% | 25% | 0% | 0% |
| Total Percent | 0% | 100% | 0% | 100% | 0% | 0% |
| Total Enrolled | 0 | 7 | 0 | 8 | 0 | 0 |
| Middle Eastern | | | | | | |
| Success | 0% | 0% | 0% | 0% | 0% | 0% |
| Non-Success | 0% | 0% | 0% | 0% | 0% | 0% |
| Withdrawal | 0% | 0% | 0% | 0% | 0% | 0% |
| Total Percent | 0% | 0% | 0% | 0% | 0% | 0% |
| Total Enrolled | 0 | 0 | 0 | 0 | 0 | 0 |
| Native American | | | | | | |
| Success | 0% | 0% | 0% | 100% | 0% | 0% |
| Non-Success | 0% | 0% | 0% | 0% | 0% | 0% |
| Withdrawal | 0% | 0% | 0% | 0% | 0% | 0% |
| Total Percent | 0% | 0% | 0% | 100% | 0% | 0% |
| Total Enrolled | 0 | 0 | 0 | 1 | 0 | 0 |
| Pacific Islander | | | | | | |
| Success | 0% | 100% | 0% | 0% | 0% | 0% |
| Non-Success | 0% | 0% | 0% | 0% | 0% | 0% |
| Withdrawal | 0% | 0% | 0% | 0% | 0% | 0% |
| Total Percent | 0% | 100% | 0% | 0% | 0% | 0% |
| Total Enrolled | 0 | 1 | 0 | 0 | 0 | 0 |
| White | | | | | | |
| Success | 0% | 55% | 0% | 35% | 0% | 0% |
| Non-Success | 0% | 45% | 0% | 41% | 0% | 0% |
| Withdrawal | 0% | 0% | 0% | 24% | 0% | 0% |
| Total Percent | 0% | 100% | 0% | 100% | 0% | 0% |
| Total Enrolled | 0 | 11 | 0 | 17 | 0 | 0 |