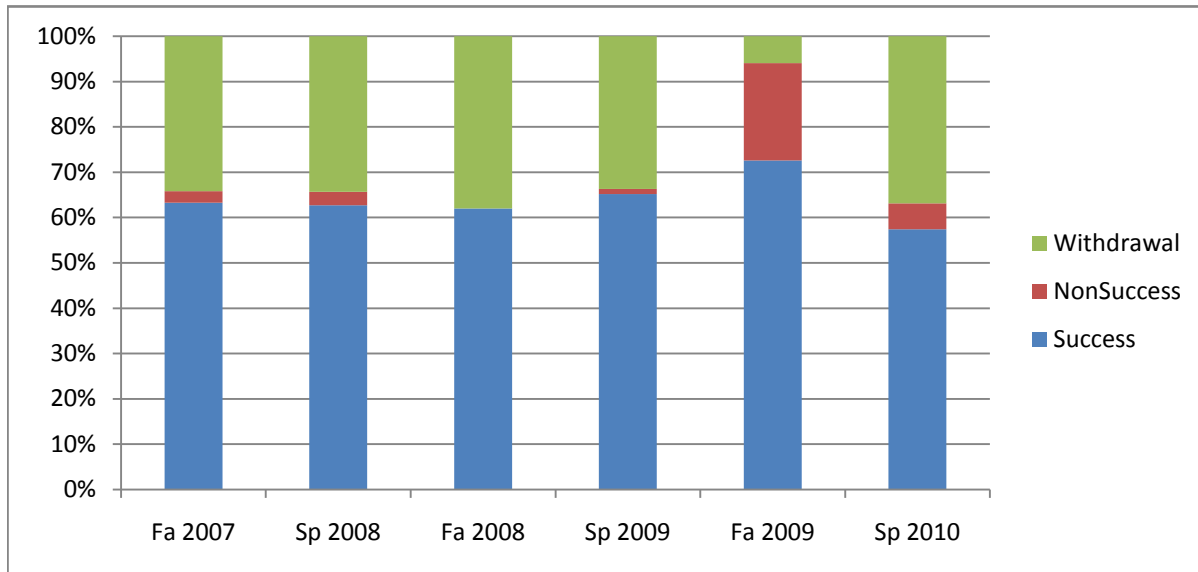
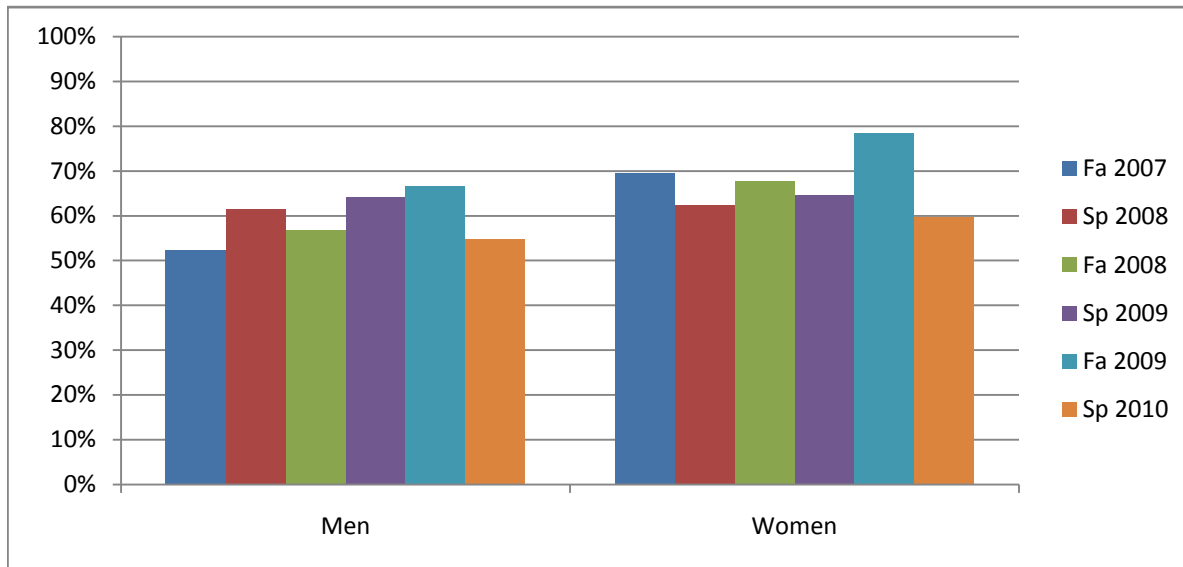


Chabot  
Success, Non-Success, and Withdrawal Rates By Semester  
Course: REST 80



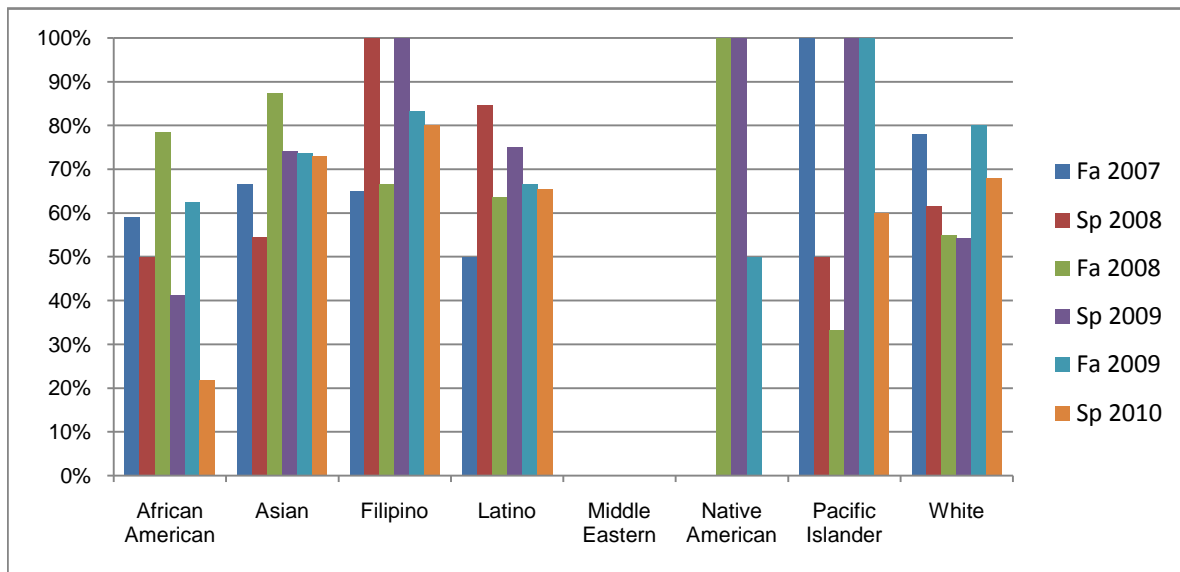
|                | Fa 2007 | Sp 2008 | Fa 2008 | Sp 2009 | Fa 2009 | Sp 2010 |
|----------------|---------|---------|---------|---------|---------|---------|
| Success        | 63%     | 63%     | 62%     | 65%     | 73%     | 57%     |
| Non-Success    | 3%      | 3%      | 0%      | 1%      | 21%     | 6%      |
| Withdrawal     | 34%     | 34%     | 38%     | 34%     | 6%      | 37%     |
| Total Percent  | 100%    | 100%    | 100%    | 100%    | 100%    | 100%    |
| Total Enrolled | 158     | 67      | 71      | 92      | 84      | 141     |

Chabot  
Success Rates By Gender and Semester  
Course: REST 80



|                | Fa 2007   | Sp 2008   | Fa 2008   | Sp 2009   | Fa 2009   | Sp 2010   |
|----------------|-----------|-----------|-----------|-----------|-----------|-----------|
| <b>Men</b>     |           |           |           |           |           |           |
| Success        | 52%       | 62%       | 57%       | 64%       | 67%       | 55%       |
| Non-Success    | 5%        | 4%        | 0%        | 3%        | 24%       | 4%        |
| Withdrawal     | 43%       | 35%       | 43%       | 33%       | 10%       | 41%       |
| Total Percent  | 100%      | 100%      | 100%      | 100%      | 100%      | 100%      |
| Total Enrolled | <b>61</b> | <b>26</b> | <b>37</b> | <b>39</b> | <b>42</b> | <b>73</b> |
| <b>Women</b>   |           |           |           |           |           |           |
| Success        | 70%       | 63%       | 68%       | 65%       | 79%       | 60%       |
| Non-Success    | 1%        | 3%        | 0%        | 0%        | 19%       | 6%        |
| Withdrawal     | 29%       | 35%       | 32%       | 35%       | 2%        | 34%       |
| Total Percent  | 100%      | 100%      | 100%      | 100%      | 100%      | 100%      |
| Total Enrolled | <b>89</b> | <b>40</b> | <b>31</b> | <b>51</b> | <b>42</b> | <b>62</b> |

Chabot  
Success Rates By Ethnicity and Semester  
Course: REST 80



|                         | Fa 2007 | Sp 2008 | Fa 2008 | Sp 2009 | Fa 2009 | Sp 2010 |
|-------------------------|---------|---------|---------|---------|---------|---------|
| <b>African American</b> |         |         |         |         |         |         |
| Success                 | 59%     | 50%     | 79%     | 41%     | 63%     | 22%     |
| Non-Success             | 3%      | 6%      | 0%      | 0%      | 31%     | 9%      |
| Withdrawal              | 38%     | 44%     | 21%     | 59%     | 6%      | 69%     |
| Total Percent           | 100%    | 100%    | 100%    | 100%    | 100%    | 100%    |
| Total Enrolled          | 39      | 18      | 14      | 17      | 16      | 32      |
| <b>Asian</b>            |         |         |         |         |         |         |
| Success                 | 67%     | 55%     | 88%     | 74%     | 74%     | 73%     |
| Non-Success             | 0%      | 9%      | 0%      | 4%      | 21%     | 5%      |
| Withdrawal              | 33%     | 36%     | 13%     | 22%     | 5%      | 22%     |
| Total Percent           | 100%    | 100%    | 100%    | 100%    | 100%    | 100%    |
| Total Enrolled          | 21      | 11      | 8       | 27      | 19      | 37      |
| <b>Filipino</b>         |         |         |         |         |         |         |
| Success                 | 65%     | 100%    | 67%     | 100%    | 83%     | 80%     |
| Non-Success             | 10%     | 0%      | 0%      | 0%      | 17%     | 20%     |
| Withdrawal              | 25%     | 0%      | 33%     | 0%      | 0%      | 0%      |
| Total Percent           | 100%    | 100%    | 100%    | 100%    | 100%    | 100%    |
| Total Enrolled          | 20      | 2       | 3       | 6       | 6       | 5       |
| <b>Latino</b>           |         |         |         |         |         |         |
| Success                 | 50%     | 85%     | 64%     | 75%     | 67%     | 65%     |
| Non-Success             | 0%      | 0%      | 0%      | 0%      | 33%     | 0%      |
| Withdrawal              | 50%     | 15%     | 36%     | 25%     | 0%      | 35%     |
| Total Percent           | 100%    | 100%    | 100%    | 100%    | 100%    | 100%    |
| Total Enrolled          | 32      | 13      | 11      | 8       | 9       | 26      |
| <b>Middle Eastern</b>   |         |         |         |         |         |         |
| Success                 | 0%      | 0%      | 0%      | 0%      | 0%      | 0%      |
| Non-Success             | 0%      | 0%      | 0%      | 0%      | 0%      | 0%      |
| Withdrawal              | 0%      | 0%      | 0%      | 0%      | 0%      | 0%      |

|                         |      |      |      |      |      |      |
|-------------------------|------|------|------|------|------|------|
| Total Percent           | 0%   | 0%   | 0%   | 0%   | 0%   | 0%   |
| Total Enrolled          | 0    | 0    | 0    | 0    | 0    | 0    |
| <b>Native American</b>  |      |      |      |      |      |      |
| Success                 | 0%   | 0%   | 100% | 100% | 50%  | 0%   |
| Non-Success             | 0%   | 0%   | 0%   | 0%   | 50%  | 0%   |
| Withdrawal              | 0%   | 0%   | 0%   | 0%   | 0%   | 100% |
| Total Percent           | 0%   | 0%   | 100% | 100% | 100% | 100% |
| Total Enrolled          | 0    | 0    | 1    | 1    | 2    | 1    |
| <b>Pacific Islander</b> |      |      |      |      |      |      |
| Success                 | 100% | 50%  | 33%  | 100% | 100% | 60%  |
| Non-Success             | 0%   | 0%   | 0%   | 0%   | 0%   | 0%   |
| Withdrawal              | 0%   | 50%  | 67%  | 0%   | 0%   | 40%  |
| Total Percent           | 100% | 100% | 100% | 100% | 100% | 100% |
| Total Enrolled          | 3    | 2    | 3    | 1    | 1    | 5    |
| <b>White</b>            |      |      |      |      |      |      |
| Success                 | 78%  | 62%  | 55%  | 54%  | 80%  | 68%  |
| Non-Success             | 3%   | 0%   | 0%   | 0%   | 12%  | 7%   |
| Withdrawal              | 19%  | 38%  | 45%  | 46%  | 8%   | 25%  |
| Total Percent           | 100% | 100% | 100% | 100% | 100% | 100% |
| Total Enrolled          | 32   | 13   | 20   | 24   | 25   | 28   |