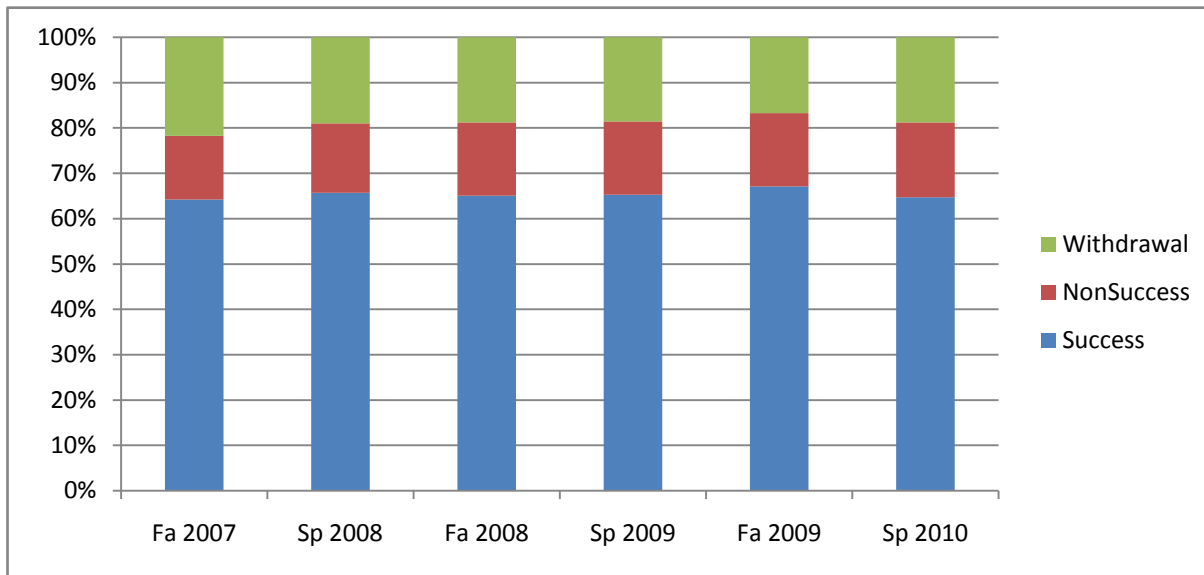
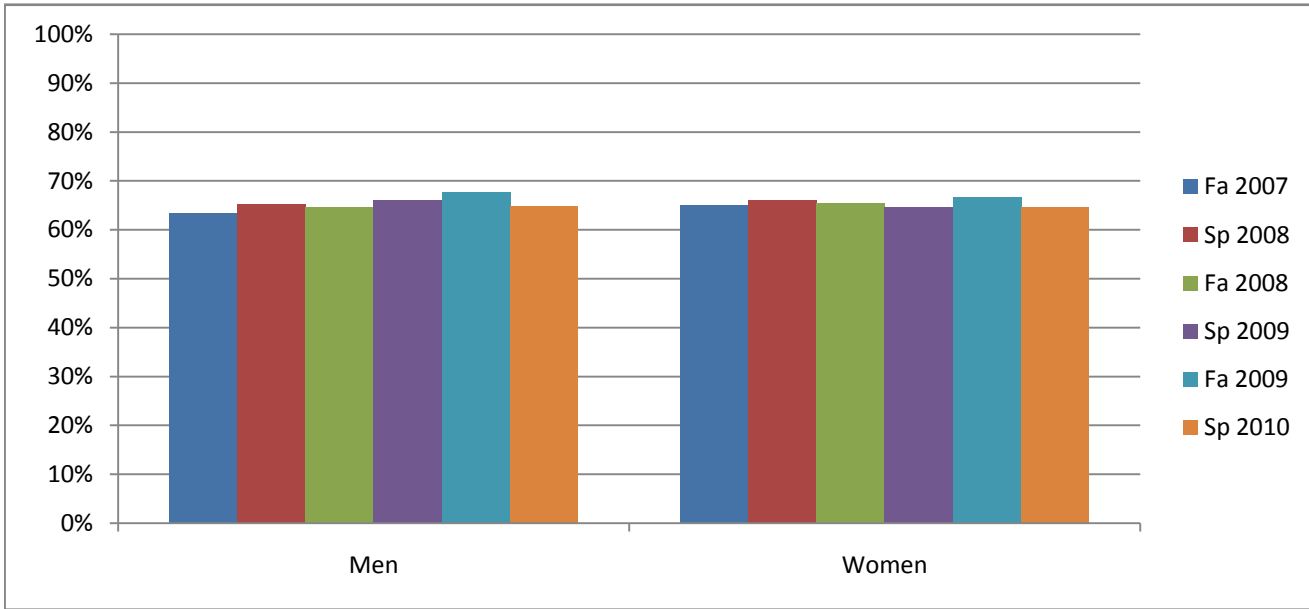


Chabot
Success, Non-Success, and Withdrawal Rates By Semester
College: Chabot



	Fa 2007	Sp 2008	Fa 2008	Sp 2009	Fa 2009	Sp 2010
Success	64%	66%	65%	65%	67%	65%
Non-Success	14%	15%	16%	16%	16%	17%
Withdrawal	22%	19%	19%	19%	17%	19%
Total Percent	100%	100%	100%	100%	100%	100%
Total Enrolled	38,169	37,890	39,667	40,305	42,915	41,175

Chabot
Success Rates By Gender and Semester
College: Chabot

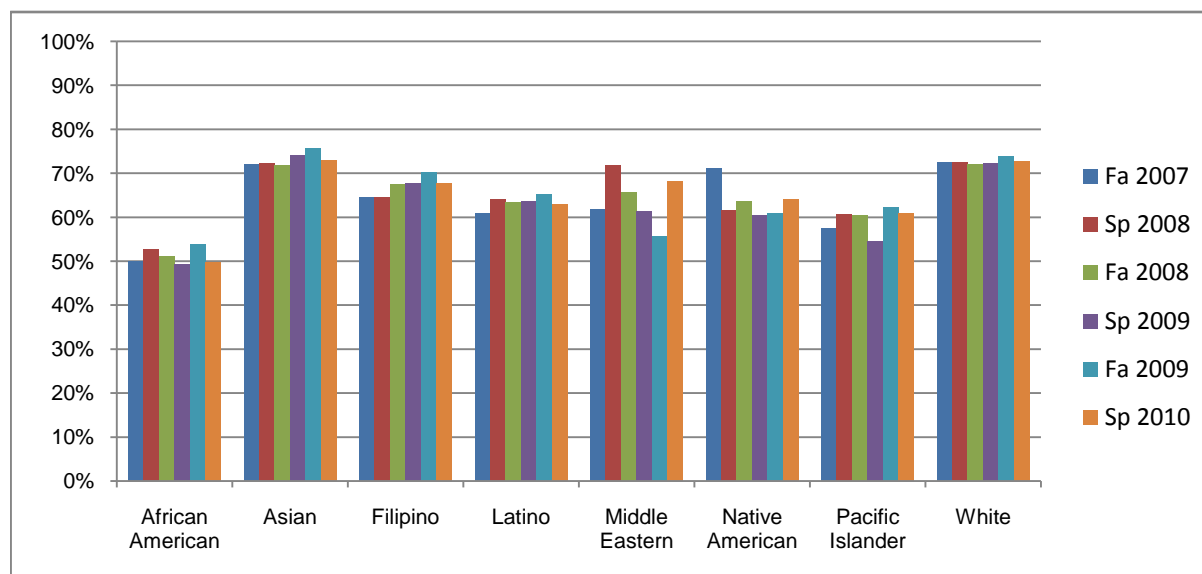


	Fa 2007	Sp 2008	Fa 2008	Sp 2009	Fa 2009	Sp 2010
Men						
Success	63%	65%	65%	66%	68%	65%
Non-Success	15%	16%	17%	16%	16%	17%
Withdrawal	22%	19%	19%	18%	16%	19%
Total Percent	100%	100%	100%	100%	100%	100%
Total Enrolled	16,794	16,540	17,386	17,930	19,439	18,631

	Fa 2007	Sp 2008	Fa 2008	Sp 2009	Fa 2009	Sp 2010
Women						
Success	65%	66%	65%	65%	67%	65%
Non-Success	14%	15%	16%	16%	16%	16%
Withdrawal	21%	19%	19%	19%	17%	19%
Total Percent	100%	100%	100%	100%	100%	100%
Total Enrolled	20,663	20,670	21,546	21,661	22,660	21,888

Ethnicity_Totals_Term

Chabot Success Rates By Ethnicity and Semester College: Chabot



	Fa 2007	Sp 2008	Fa 2008	Sp 2009	Fa 2009	Sp 2010
African American						
Success	50%	53%	51%	49%	54%	50%
Non-Success	21%	22%	25%	24%	24%	23%
Withdrawal	29%	25%	24%	26%	22%	27%
Total Percent	100%	100%	100%	100%	100%	100%
Total Enrolled	5,943	5,774	6,534	6,643	7,435	7,136
Asian						
Success	72%	72%	72%	74%	76%	73%
Non-Success	11%	12%	13%	12%	11%	12%
Withdrawal	18%	16%	16%	14%	13%	15%
Total Percent	100%	100%	100%	100%	100%	100%
Total Enrolled	6,548	6,559	6,726	6,907	7,123	6,945
Filipino						
Success	64%	64%	67%	68%	70%	68%
Non-Success	14%	15%	14%	15%	14%	15%
Withdrawal	22%	20%	18%	17%	15%	17%
Total Percent	100%	100%	100%	100%	100%	100%
Total Enrolled	3,943	3,702	3,902	3,908	3,959	3,749
Latino						
Success	61%	64%	63%	64%	65%	63%
Non-Success	16%	17%	17%	18%	18%	18%
Withdrawal	23%	19%	19%	18%	17%	19%
Total Percent	100%	100%	100%	100%	100%	100%
Total Enrolled	8,793	8,735	9,624	9,839	11,426	10,882
Middle Eastern						
Success	62%	72%	66%	61%	56%	68%
Non-Success	16%	13%	17%	18%	24%	14%
Withdrawal	22%	15%	17%	21%	21%	18%

Ethnicity_Totals_Term

	Total Percent	100%	100%	100%	100%	100%	100%
	Total Enrolled	110	92	99	85	106	113
Native American							
	Success	71%	61%	64%	60%	61%	64%
	Non-Success	12%	17%	16%	17%	18%	12%
	Withdrawal	17%	22%	21%	22%	21%	24%
	Total Percent	100%	100%	100%	100%	100%	100%
	Total Enrolled	308	337	354	340	296	239
Pacific Islander							
	Success	57%	61%	60%	54%	62%	61%
	Non-Success	18%	19%	18%	21%	21%	18%
	Withdrawal	24%	20%	21%	25%	17%	22%
	Total Percent	100%	100%	100%	100%	100%	100%
	Total Enrolled	1,082	1,114	1,166	1,160	1,078	993
White							
	Success	72%	72%	72%	72%	74%	73%
	Non-Success	10%	11%	11%	11%	12%	13%
	Withdrawal	18%	16%	17%	16%	14%	15%
	Total Percent	100%	100%	100%	100%	100%	100%
	Total Enrolled	7,848	7,885	7,684	7,880	8,244	7,964