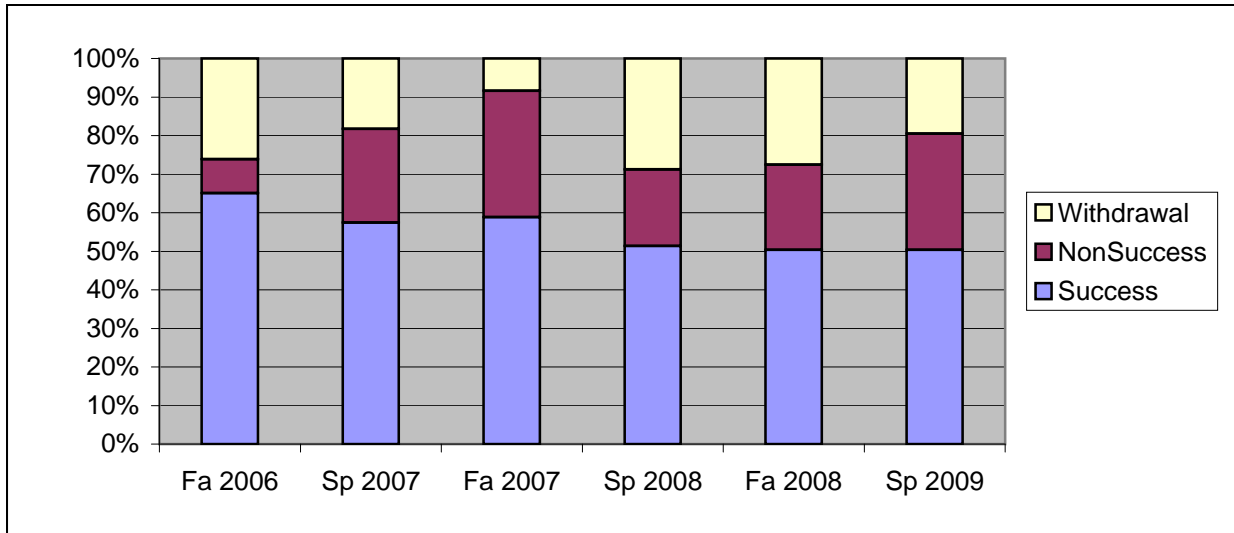
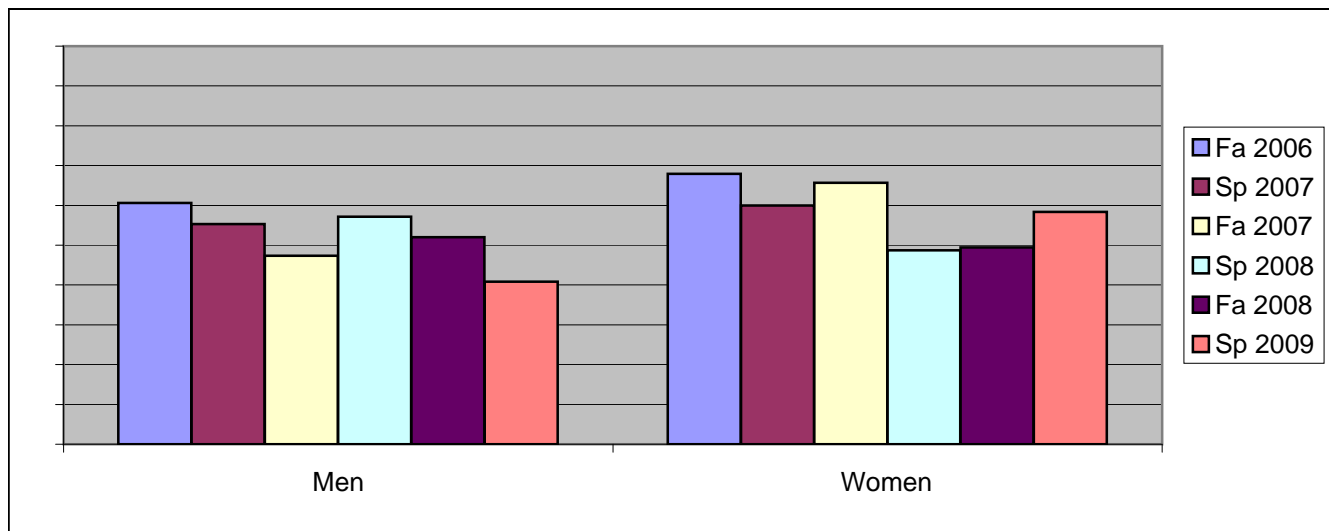


Chabot  
Success, Non-Success, and Withdrawal Rates By Semester  
Course: PSCN 10



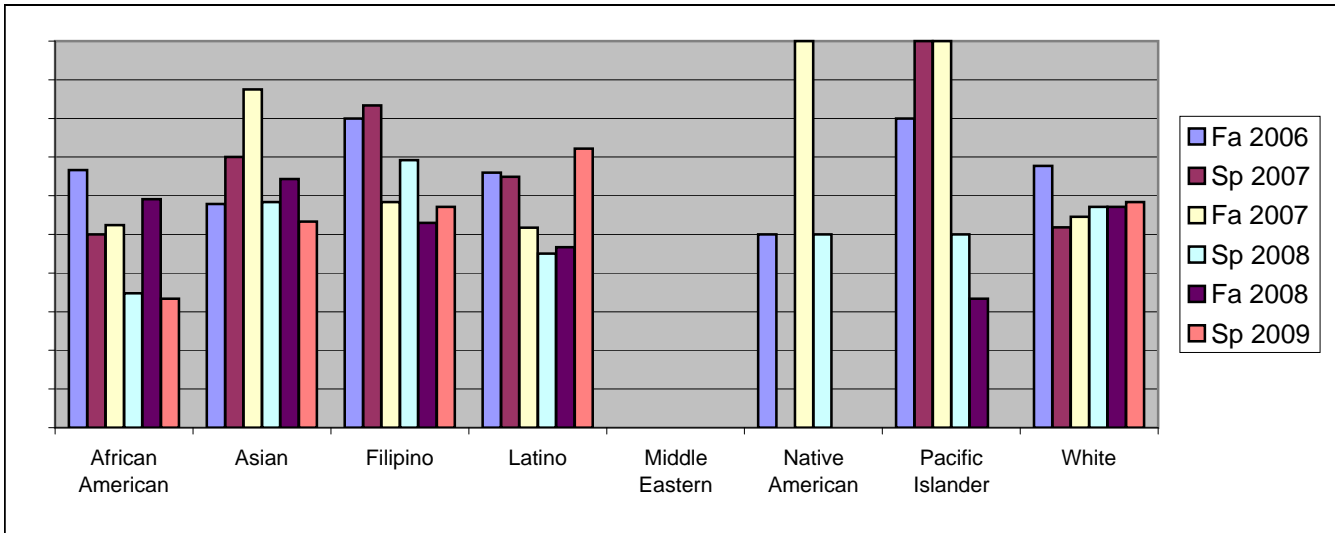
	Fa 2006	Sp 2007	Fa 2007	Sp 2008	Fa 2008	Sp 2009
Success	65%	57%	59%	51%	50%	50%
Non-Success	9%	24%	33%	20%	22%	30%
Withdrawal	26%	18%	8%	29%	28%	20%
Total Percent	100%	100%	100%	100%	100%	100%
Total Enrolled	<b>149</b>	<b>115</b>	<b>107</b>	<b>111</b>	<b>145</b>	<b>123</b>

Chabot  
Success Rates By Gender and Semester  
Course: PSCN 10



	Fa 2006	Sp 2007	Fa 2007	Sp 2008	Fa 2008	Sp 2009
<b>Men</b>						
Success	61%	55%	47%	57%	52%	41%
Non-Success	12%	21%	45%	26%	18%	27%
Withdrawal	27%	23%	8%	17%	30%	33%
Total Percent	100%	100%	100%	100%	100%	100%
Total Enrolled	<b>66</b>	<b>47</b>	<b>38</b>	<b>35</b>	<b>50</b>	<b>49</b>
<b>Women</b>						
Success	68%	60%	66%	49%	49%	58%
Non-Success	6%	26%	25%	17%	25%	31%
Withdrawal	26%	14%	9%	34%	26%	11%
Total Percent	100%	100%	100%	100%	100%	100%
Total Enrolled	<b>81</b>	<b>65</b>	<b>67</b>	<b>76</b>	<b>93</b>	<b>72</b>

Chabot  
Success Rates By Ethnicity and Semester  
Course: PSCN 10



	Fa 2006	Sp 2007	Fa 2007	Sp 2008	Fa 2008	Sp 2009
<b>African American</b>						
Success	67%	50%	52%	35%	59%	33%
Non-Success	5%	25%	48%	26%	14%	41%
Withdrawal	29%	25%	0%	39%	27%	26%
Total Percent	100%	100%	100%	100%	100%	100%
Total Enrolled	21	20	21	23	22	27
<b>Asian</b>						
Success	58%	70%	88%	58%	64%	53%
Non-Success	16%	10%	13%	33%	0%	27%
Withdrawal	26%	20%	0%	8%	36%	20%
Total Percent	100%	100%	100%	100%	100%	100%
Total Enrolled	19	10	8	12	14	15
<b>Filipino</b>						
Success	80%	83%	58%	69%	53%	57%
Non-Success	0%	0%	25%	15%	6%	14%
Withdrawal	20%	17%	17%	15%	41%	29%
Total Percent	100%	100%	100%	100%	100%	100%
Total Enrolled	5	6	12	13	17	14
<b>Latino</b>						
Success	66%	65%	52%	45%	47%	72%
Non-Success	6%	27%	34%	10%	42%	19%
Withdrawal	28%	8%	14%	45%	11%	8%
Total Percent	100%	100%	100%	100%	100%	100%
Total Enrolled	50	37	29	20	45	36
<b>Middle Eastern</b>						
Success	0%	0%	0%	0%	0%	0%
Non-Success	100%	0%	100%	0%	0%	100%
Withdrawal	0%	0%	0%	0%	100%	0%
Total Percent	100%	0%	100%	0%	100%	100%
Total Enrolled	2	0	1	0	1	1
<b>Native American</b>						
Success	50%	0%	100%	50%	0%	0%
Non-Success	0%	100%	0%	50%	0%	0%
Withdrawal	50%	0%	0%	0%	0%	100%

	Total Percent	100%	100%	100%	100%	0%	100%
	Total Enrolled	<b>2</b>	<b>1</b>	<b>2</b>	<b>2</b>	<b>0</b>	<b>1</b>
<b>Pacific Islander</b>							
	Success	80%	100%	100%	50%	33%	0%
	Non-Success	0%	0%	0%	50%	33%	100%
	Withdrawal	20%	0%	0%	0%	33%	0%
	Total Percent	100%	100%	100%	100%	100%	100%
	Total Enrolled	<b>5</b>	<b>3</b>	<b>1</b>	<b>4</b>	<b>6</b>	<b>3</b>
<b>White</b>							
	Success	68%	52%	55%	57%	57%	58%
	Non-Success	6%	22%	32%	11%	18%	25%
	Withdrawal	26%	26%	14%	32%	25%	17%
	Total Percent	100%	100%	100%	100%	100%	100%
	Total Enrolled	<b>31</b>	<b>27</b>	<b>22</b>	<b>28</b>	<b>28</b>	<b>12</b>