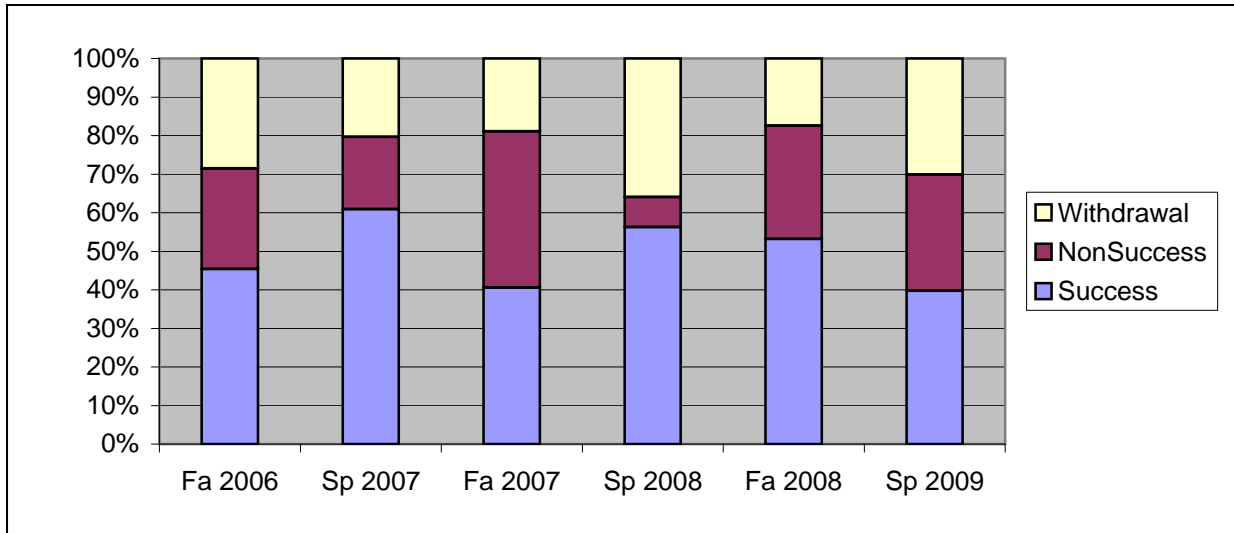
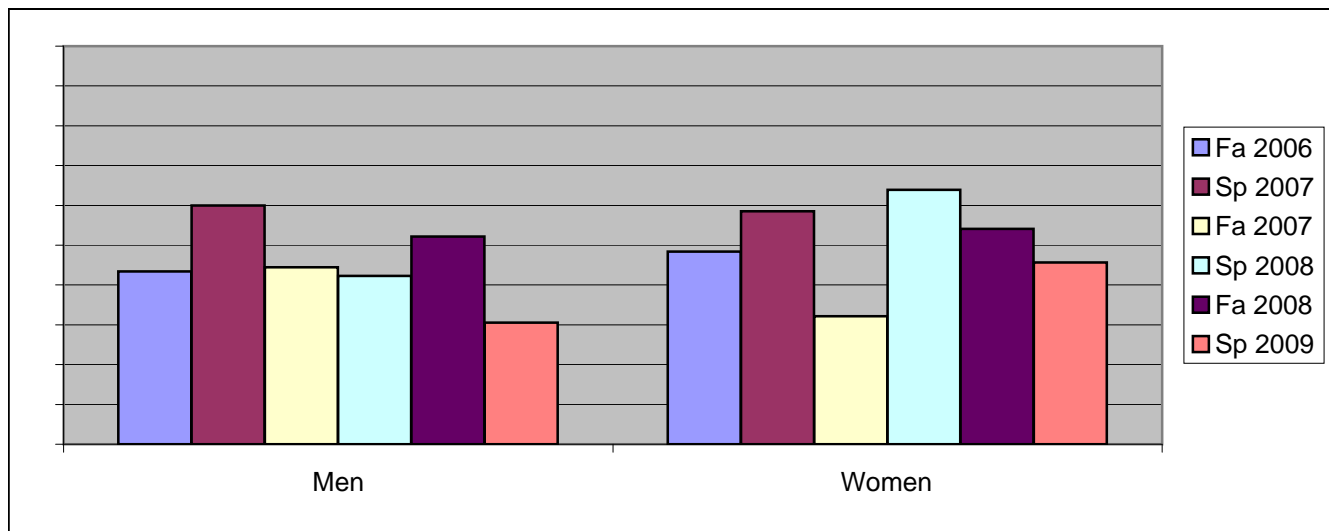


Chabot  
Success, Non-Success, and Withdrawal Rates By Semester  
Course: PSCN 15



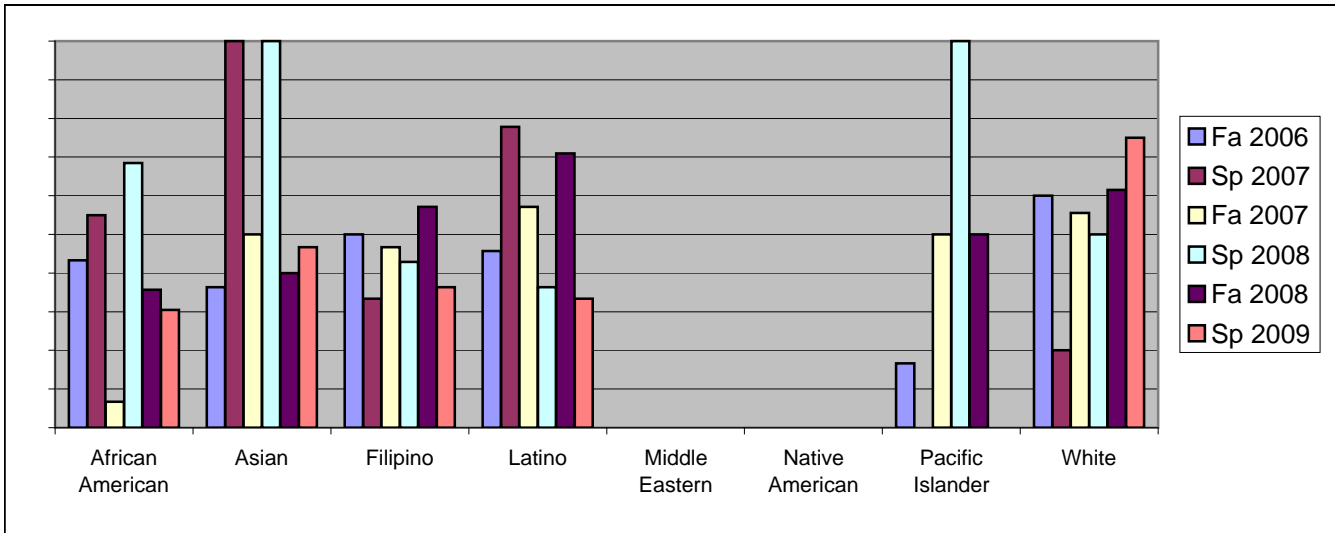
	Fa 2006	Sp 2007	Fa 2007	Sp 2008	Fa 2008	Sp 2009
Success	45%	61%	41%	56%	53%	40%
Non-Success	26%	19%	41%	8%	29%	30%
Withdrawal	29%	20%	19%	36%	17%	30%
Total Percent	100%	100%	100%	100%	100%	100%
Total Enrolled	<b>119</b>	<b>64</b>	<b>74</b>	<b>64</b>	<b>109</b>	<b>83</b>

Chabot  
Success Rates By Gender and Semester  
Course: PSCN 15



	Fa 2006	Sp 2007	Fa 2007	Sp 2008	Fa 2008	Sp 2009
<b>Men</b>						
Success	43%	60%	44%	42%	52%	31%
Non-Success	23%	10%	36%	8%	37%	39%
Withdrawal	34%	30%	20%	50%	11%	31%
Total Percent	100%	100%	100%	100%	100%	100%
Total Enrolled	<b>53</b>	<b>20</b>	<b>45</b>	<b>26</b>	<b>46</b>	<b>36</b>
<b>Women</b>						
Success	48%	59%	32%	64%	54%	46%
Non-Success	27%	24%	50%	8%	25%	24%
Withdrawal	24%	17%	18%	28%	21%	30%
Total Percent	100%	100%	100%	100%	100%	100%
Total Enrolled	<b>62</b>	<b>41</b>	<b>28</b>	<b>36</b>	<b>61</b>	<b>46</b>

Chabot  
Success Rates By Ethnicity and Semester  
Course: PSCN 15



	Fa 2006	Sp 2007	Fa 2007	Sp 2008	Fa 2008	Sp 2009
<b>African American</b>						
Success	43%	55%	7%	68%	36%	30%
Non-Success	27%	20%	60%	11%	40%	35%
Withdrawal	30%	25%	33%	21%	24%	35%
Total Percent	100%	100%	100%	100%	100%	100%
Total Enrolled	<b>30</b>	<b>20</b>	<b>15</b>	<b>19</b>	<b>42</b>	<b>23</b>
<b>Asian</b>						
Success	36%	100%	50%	100%	40%	47%
Non-Success	36%	0%	13%	0%	40%	27%
Withdrawal	27%	0%	38%	0%	20%	27%
Total Percent	100%	100%	100%	100%	100%	100%
Total Enrolled	<b>11</b>	<b>7</b>	<b>8</b>	<b>2</b>	<b>10</b>	<b>15</b>
<b>Filipino</b>						
Success	50%	33%	47%	43%	57%	36%
Non-Success	25%	11%	40%	0%	0%	45%
Withdrawal	25%	56%	13%	57%	43%	18%
Total Percent	100%	100%	100%	100%	100%	100%
Total Enrolled	<b>4</b>	<b>9</b>	<b>15</b>	<b>7</b>	<b>7</b>	<b>11</b>
<b>Latino</b>						
Success	46%	78%	57%	36%	71%	33%
Non-Success	26%	17%	36%	9%	23%	33%
Withdrawal	29%	6%	7%	55%	6%	33%
Total Percent	100%	100%	100%	100%	100%	100%
Total Enrolled	<b>35</b>	<b>18</b>	<b>14</b>	<b>11</b>	<b>31</b>	<b>18</b>
<b>Middle Eastern</b>						
Success	0%	0%	0%	0%	0%	0%
Non-Success	0%	0%	0%	0%	0%	0%
Withdrawal	0%	0%	100%	0%	0%	0%
Total Percent	0%	0%	100%	0%	0%	0%
Total Enrolled	<b>0</b>	<b>0</b>	<b>1</b>	<b>0</b>	<b>0</b>	<b>0</b>
<b>Native American</b>						
Success	0%	0%	0%	0%	0%	0%
Non-Success	0%	0%	100%	0%	0%	0%
Withdrawal	100%	0%	0%	0%	0%	0%

Total Percent	100%	0%	100%	0%	0%	0%
Total Enrolled	<b>1</b>	<b>0</b>	<b>1</b>	<b>0</b>	<b>0</b>	<b>0</b>
<b>Pacific Islander</b>						
Success	17%	0%	50%	100%	50%	0%
Non-Success	50%	0%	25%	0%	0%	0%
Withdrawal	33%	100%	25%	0%	50%	100%
Total Percent	100%	100%	100%	100%	100%	100%
Total Enrolled	<b>6</b>	<b>1</b>	<b>4</b>	<b>2</b>	<b>2</b>	<b>2</b>
<b>White</b>						
Success	60%	20%	56%	50%	62%	75%
Non-Success	16%	80%	33%	17%	31%	0%
Withdrawal	24%	0%	11%	33%	8%	25%
Total Percent	100%	100%	100%	100%	100%	100%
Total Enrolled	<b>25</b>	<b>5</b>	<b>9</b>	<b>12</b>	<b>13</b>	<b>8</b>