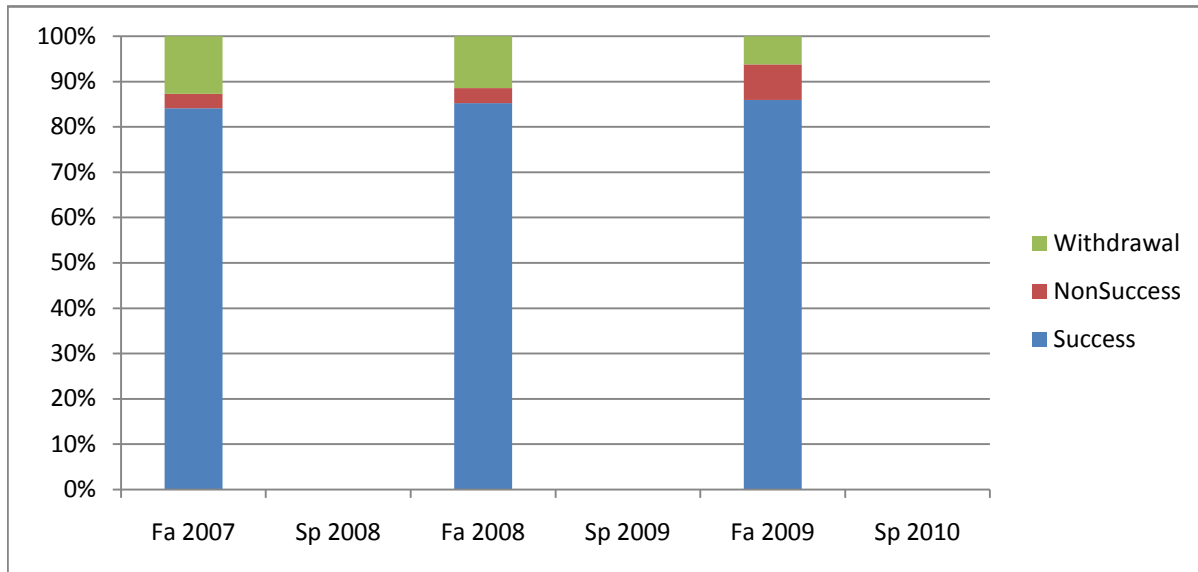
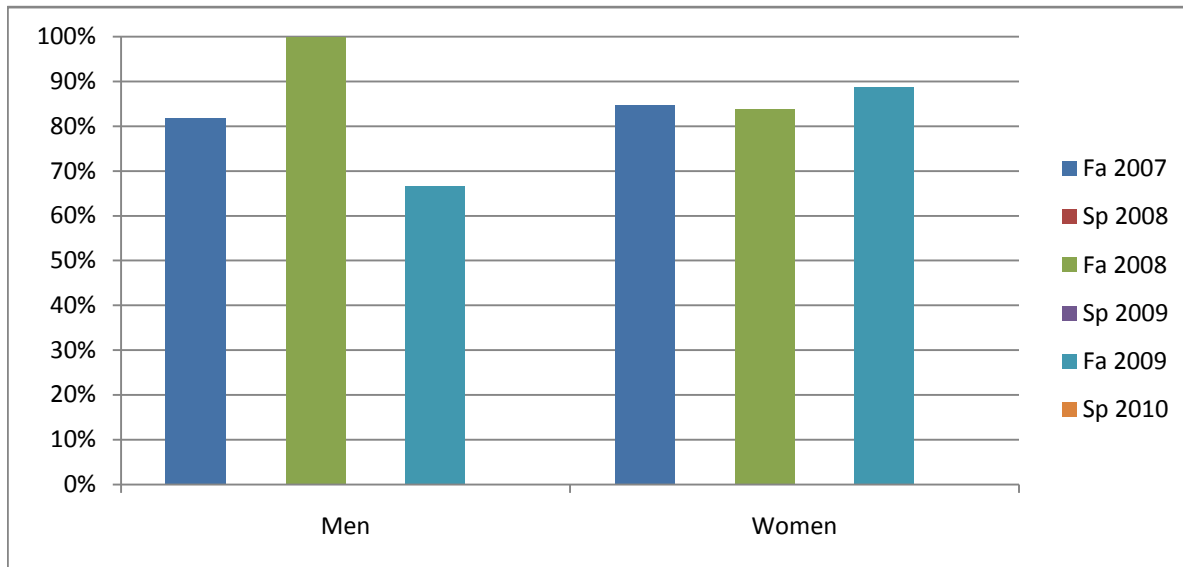


Chabot  
Success, Non-Success, and Withdrawal Rates By Semester  
Course: NURS 61



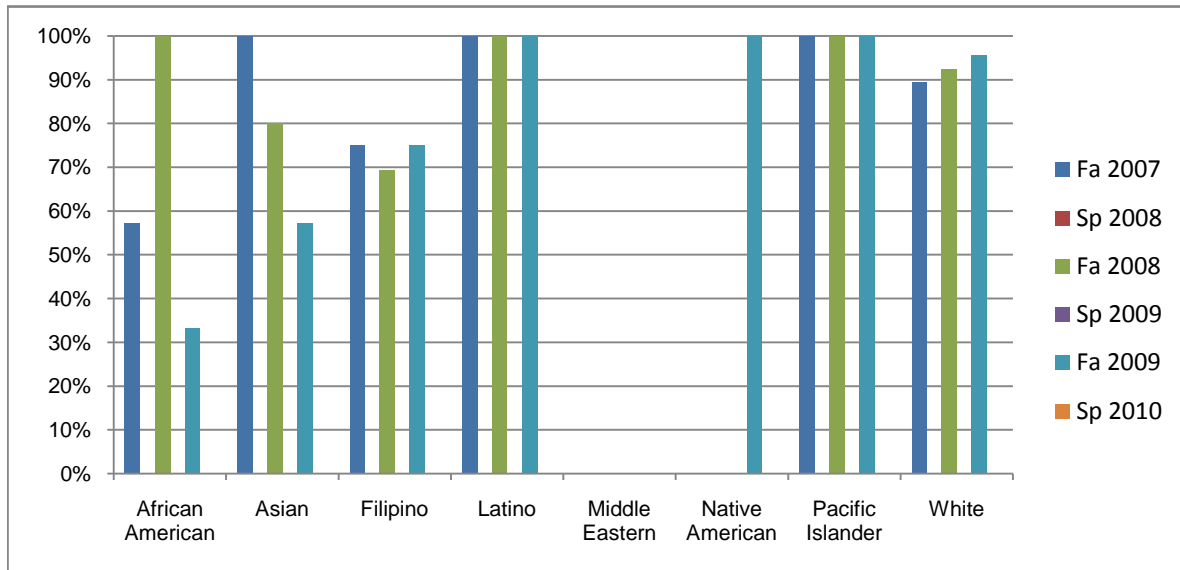
	Fa 2007	Sp 2008	Fa 2008	Sp 2009	Fa 2009	Sp 2010
Success	84%	0%	85%	0%	86%	0%
Non-Success	3%	0%	3%	0%	8%	0%
Withdrawal	13%	0%	11%	0%	6%	0%
Total Percent	100%	0%	100%	0%	100%	0%
Total Enrolled	63	0	61	0	64	0

Chabot  
Success Rates By Gender and Semester  
Course: NURS 61



	Fa 2007	Sp 2008	Fa 2008	Sp 2009	Fa 2009	Sp 2010
<b>Men</b>						
Success	82%	0%	100%	0%	67%	0%
Non-Success	9%	0%	0%	0%	17%	0%
Withdrawal	9%	0%	0%	0%	17%	0%
Total Percent	100%	0%	100%	0%	100%	0%
Total Enrolled	11	0	5	0	6	0
<b>Women</b>						
Success	85%	0%	84%	0%	89%	0%
Non-Success	2%	0%	4%	0%	7%	0%
Withdrawal	13%	0%	13%	0%	4%	0%
Total Percent	100%	0%	100%	0%	100%	0%
Total Enrolled	52	0	56	0	54	0

Chabot  
Success Rates By Ethnicity and Semester  
Course: NURS 61



	Fa 2007	Sp 2008	Fa 2008	Sp 2009	Fa 2009	Sp 2010
<b>African American</b>						
Success	57%	0%	100%	0%	33%	0%
Non-Success	14%	0%	0%	0%	33%	0%
Withdrawal	29%	0%	0%	0%	33%	0%
Total Percent	100%	0%	100%	0%	100%	0%
Total Enrolled	7	0	2	0	3	0
<b>Asian</b>						
Success	100%	0%	80%	0%	57%	0%
Non-Success	0%	0%	0%	0%	29%	0%
Withdrawal	0%	0%	20%	0%	14%	0%
Total Percent	100%	0%	100%	0%	100%	0%
Total Enrolled	3	0	10	0	7	0
<b>Filipino</b>						
Success	75%	0%	69%	0%	75%	0%
Non-Success	6%	0%	0%	0%	17%	0%
Withdrawal	19%	0%	31%	0%	8%	0%
Total Percent	100%	0%	100%	0%	100%	0%
Total Enrolled	16	0	13	0	12	0
<b>Latino</b>						
Success	100%	0%	100%	0%	100%	0%
Non-Success	0%	0%	0%	0%	0%	0%
Withdrawal	0%	0%	0%	0%	0%	0%
Total Percent	100%	0%	100%	0%	100%	0%
Total Enrolled	10	0	5	0	10	0
<b>Middle Eastern</b>						
Success	0%	0%	0%	0%	0%	0%
Non-Success	0%	0%	0%	0%	0%	0%
Withdrawal	0%	0%	0%	0%	0%	0%

	Total Percent	0%	0%	0%	0%	0%	0%
	Total Enrolled	0	0	0	0	0	0
<b>Native American</b>							
	Success	0%	0%	0%	0%	100%	0%
	Non-Success	0%	0%	0%	0%	0%	0%
	Withdrawal	0%	0%	0%	0%	0%	0%
	Total Percent	0%	0%	0%	0%	100%	0%
	Total Enrolled	0	0	0	0	2	0
<b>Pacific Islander</b>							
	Success	100%	0%	100%	0%	100%	0%
	Non-Success	0%	0%	0%	0%	0%	0%
	Withdrawal	0%	0%	0%	0%	0%	0%
	Total Percent	100%	0%	100%	0%	100%	0%
	Total Enrolled	3	0	1	0	2	0
<b>White</b>							
	Success	89%	0%	92%	0%	96%	0%
	Non-Success	0%	0%	4%	0%	0%	0%
	Withdrawal	11%	0%	4%	0%	4%	0%
	Total Percent	100%	0%	100%	0%	100%	0%
	Total Enrolled	19	0	26	0	23	0