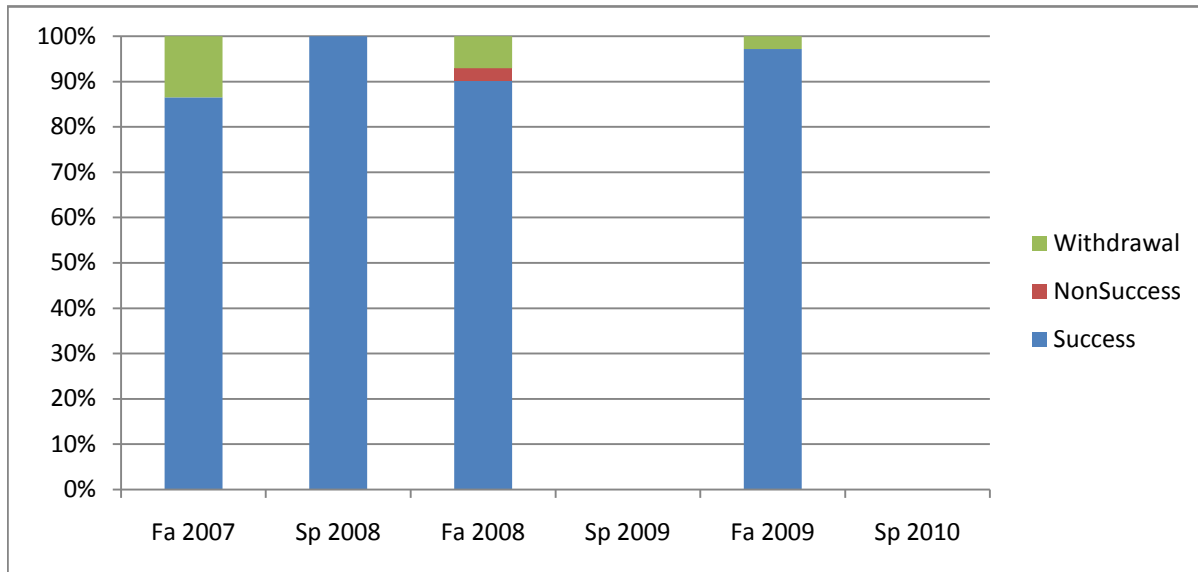
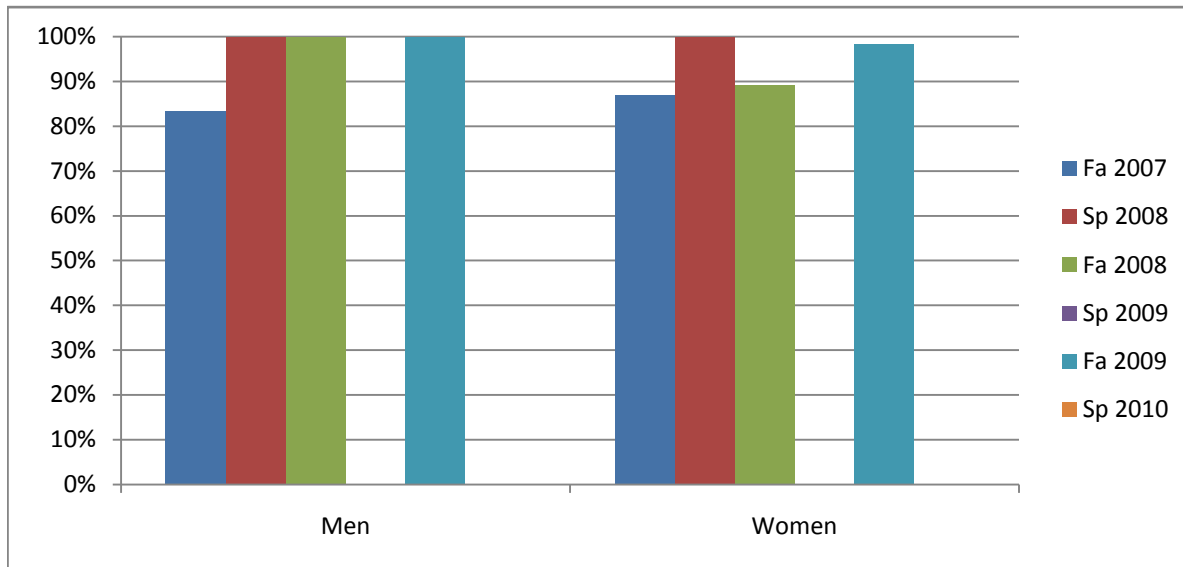


Chabot
Success, Non-Success, and Withdrawal Rates By Semester
Course: NURS 74



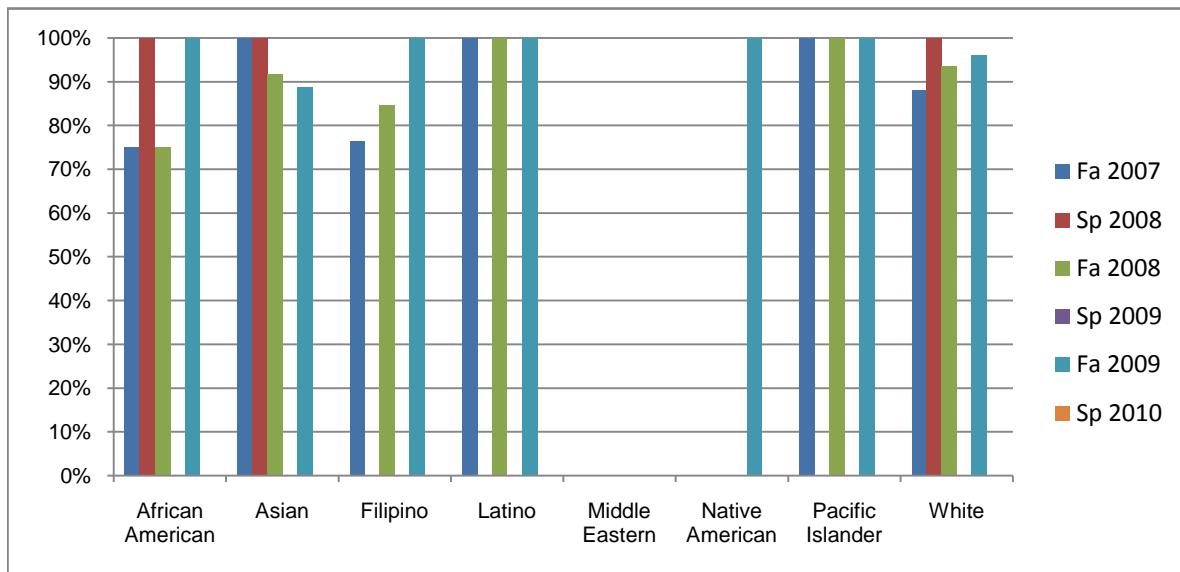
	Fa 2007	Sp 2008	Fa 2008	Sp 2009	Fa 2009	Sp 2010
Success	86%	100%	90%	0%	97%	0%
Non-Success	0%	0%	3%	0%	0%	0%
Withdrawal	14%	0%	7%	0%	3%	0%
Total Percent	100%	100%	100%	0%	100%	0%
Total Enrolled	74	5	71	0	70	0

Chabot
Success Rates By Gender and Semester
Course: NURS 74



	Fa 2007	Sp 2008	Fa 2008	Sp 2009	Fa 2009	Sp 2010
Men						
Success	83%	100%	100%	0%	100%	0%
Non-Success	0%	0%	0%	0%	0%	0%
Withdrawal	17%	0%	0%	0%	0%	0%
Total Percent	100%	100%	100%	0%	100%	0%
Total Enrolled	12	1	6	0	6	0
Women						
Success	87%	100%	89%	0%	98%	0%
Non-Success	0%	0%	3%	0%	0%	0%
Withdrawal	13%	0%	8%	0%	2%	0%
Total Percent	100%	100%	100%	0%	100%	0%
Total Enrolled	62	4	65	0	59	0

Chabot
Success Rates By Ethnicity and Semester
Course: NURS 74



	Fa 2007	Sp 2008	Fa 2008	Sp 2009	Fa 2009	Sp 2010
African American						
Success	75%	100%	75%	0%	100%	0%
Non-Success	0%	0%	0%	0%	0%	0%
Withdrawal	25%	0%	25%	0%	0%	0%
Total Percent	100%	100%	100%	0%	100%	0%
Total Enrolled	8	1	4	0	3	0
Asian						
Success	100%	100%	92%	0%	89%	0%
Non-Success	0%	0%	0%	0%	0%	0%
Withdrawal	0%	0%	8%	0%	11%	0%
Total Percent	100%	100%	100%	0%	100%	0%
Total Enrolled	5	1	12	0	9	0
Filipino						
Success	76%	0%	85%	0%	100%	0%
Non-Success	0%	0%	8%	0%	0%	0%
Withdrawal	24%	0%	8%	0%	0%	0%
Total Percent	100%	0%	100%	0%	100%	0%
Total Enrolled	17	0	13	0	12	0
Latino						
Success	100%	0%	100%	0%	100%	0%
Non-Success	0%	0%	0%	0%	0%	0%
Withdrawal	0%	0%	0%	0%	0%	0%
Total Percent	100%	0%	100%	0%	100%	0%
Total Enrolled	10	0	5	0	11	0
Middle Eastern						
Success	0%	0%	0%	0%	0%	0%
Non-Success	0%	0%	0%	0%	0%	0%
Withdrawal	0%	0%	0%	0%	0%	0%

	Total Percent	0%	0%	0%	0%	0%	0%
	Total Enrolled	0	0	0	0	0	0
Native American							
	Success	0%	0%	0%	0%	100%	0%
	Non-Success	0%	0%	0%	0%	0%	0%
	Withdrawal	0%	0%	0%	0%	0%	0%
	Total Percent	0%	0%	0%	0%	100%	0%
	Total Enrolled	0	0	0	0	2	0
Pacific Islander							
	Success	100%	0%	100%	0%	100%	0%
	Non-Success	0%	0%	0%	0%	0%	0%
	Withdrawal	0%	0%	0%	0%	0%	0%
	Total Percent	100%	0%	100%	0%	100%	0%
	Total Enrolled	3	0	1	0	2	0
White							
	Success	88%	100%	94%	0%	96%	0%
	Non-Success	0%	0%	0%	0%	0%	0%
	Withdrawal	12%	0%	6%	0%	4%	0%
	Total Percent	100%	100%	100%	0%	100%	0%
	Total Enrolled	25	2	31	0	26	0