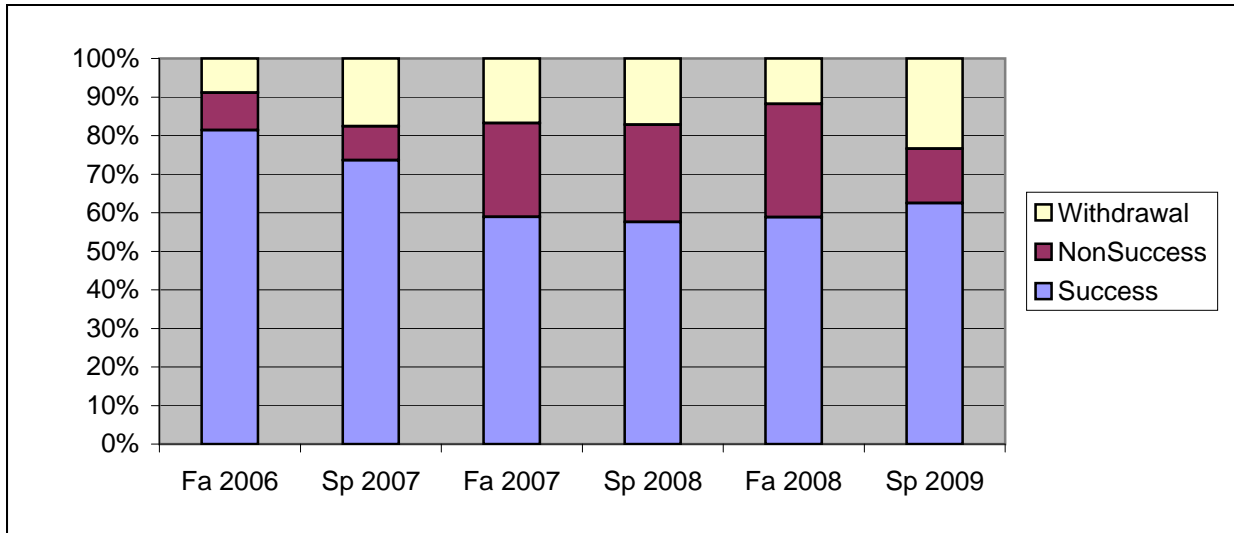
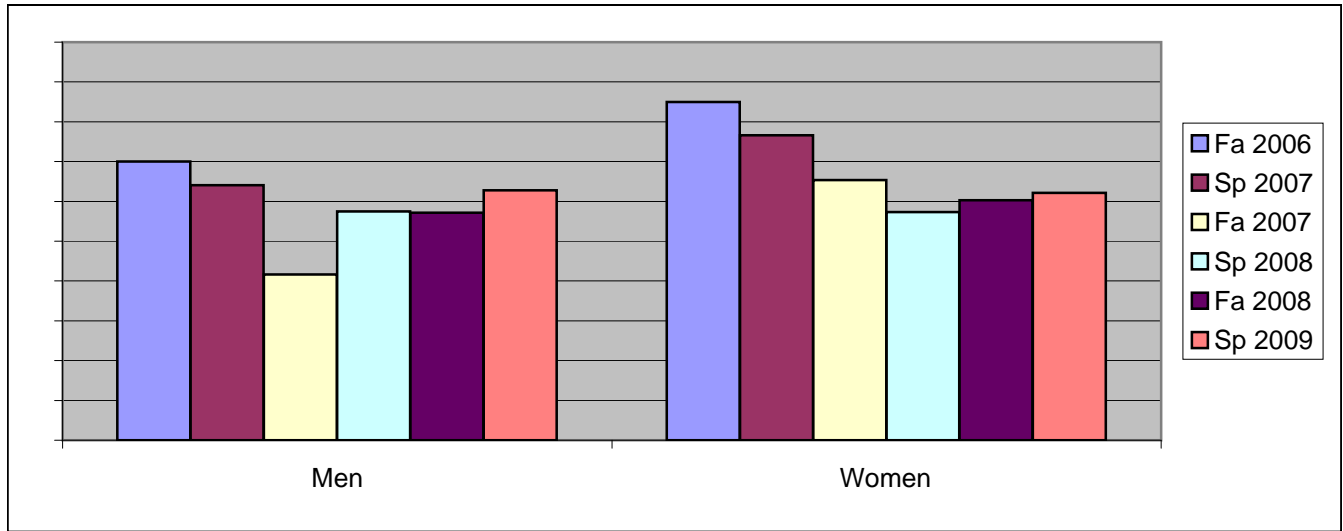


Chabot  
Success, Non-Success, and Withdrawal Rates By Semester  
Discipline: NUTR



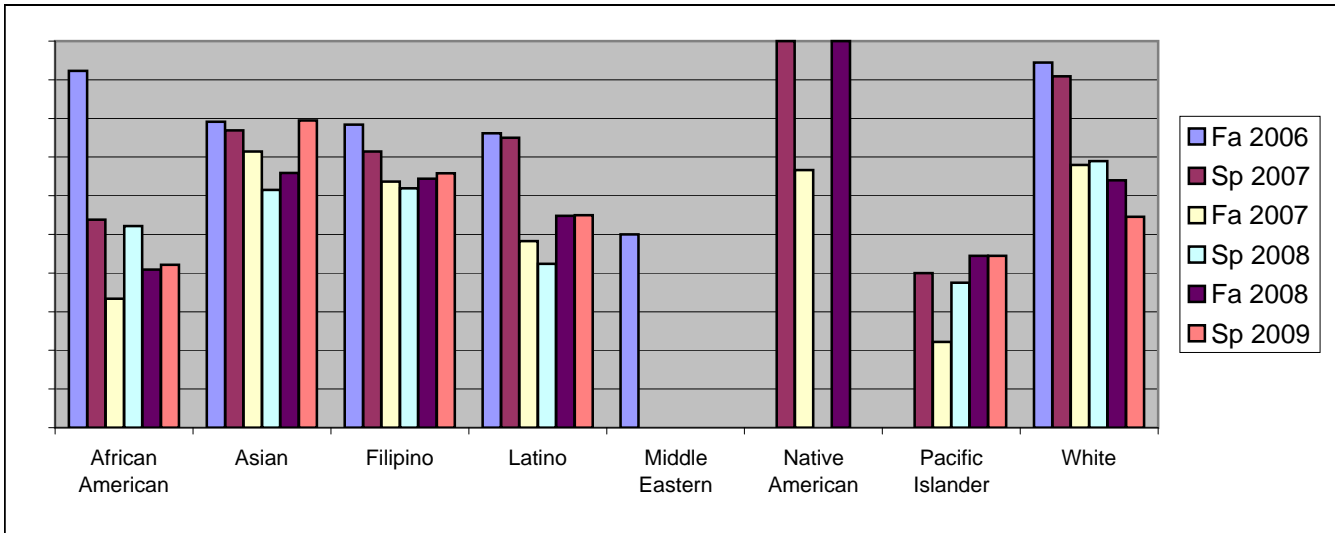
	Fa 2006	Sp 2007	Fa 2007	Sp 2008	Fa 2008	Sp 2009
Success	81%	74%	59%	58%	59%	63%
Non-Success	10%	9%	24%	25%	29%	14%
Withdrawal	9%	18%	17%	17%	12%	23%
Total Percent	100%	100%	100%	100%	100%	100%
Total Enrolled	124	148	173	198	187	184

Chabot  
Success Rates By Gender and Semester  
Discipline: NUTR



	Fa 2006	Sp 2007	Fa 2007	Sp 2008	Fa 2008	Sp 2009
<b>Men</b>						
Success	70%	64%	42%	57%	57%	63%
Non-Success	20%	13%	31%	23%	29%	12%
Withdrawal	10%	23%	27%	19%	14%	26%
Total Percent	100%	100%	100%	100%	100%	100%
Total Enrolled	<b>30</b>	<b>39</b>	<b>48</b>	<b>47</b>	<b>56</b>	<b>43</b>
<b>Women</b>						
Success	85%	77%	65%	57%	60%	62%
Non-Success	6%	7%	22%	26%	29%	15%
Withdrawal	9%	16%	13%	17%	11%	23%
Total Percent	100%	100%	100%	100%	100%	100%
Total Enrolled	<b>93</b>	<b>107</b>	<b>124</b>	<b>150</b>	<b>126</b>	<b>140</b>

Chabot  
Success Rates By Ethnicity and Semester  
Discipline: NUTR



	Fa 2006	Sp 2007	Fa 2007	Sp 2008	Fa 2008	Sp 2009
<b>African American</b>						
Success	92%	54%	33%	52%	41%	42%
Non-Success	0%	15%	33%	26%	50%	32%
Withdrawal	8%	31%	33%	22%	9%	26%
Total Percent	100%	100%	100%	100%	100%	100%
Total Enrolled	13	13	18	23	22	19
<b>Asian</b>						
Success	79%	77%	71%	62%	66%	79%
Non-Success	17%	4%	20%	28%	27%	5%
Withdrawal	4%	19%	9%	10%	7%	15%
Total Percent	100%	100%	100%	100%	100%	100%
Total Enrolled	24	26	35	39	41	39
<b>Filipino</b>						
Success	78%	71%	64%	62%	64%	66%
Non-Success	11%	11%	20%	21%	29%	11%
Withdrawal	11%	18%	16%	17%	7%	24%
Total Percent	100%	100%	100%	100%	100%	100%
Total Enrolled	37	56	44	42	45	38
<b>Latino</b>						
Success	76%	75%	48%	42%	55%	55%
Non-Success	10%	13%	31%	24%	23%	15%
Withdrawal	14%	13%	21%	33%	23%	30%
Total Percent	100%	100%	100%	100%	100%	100%
Total Enrolled	21	16	29	33	31	40
<b>Middle Eastern</b>						
Success	50%	0%	0%	0%	0%	0%
Non-Success	50%	0%	0%	0%	0%	0%
Withdrawal	0%	0%	0%	0%	0%	0%
Total Percent	100%	0%	0%	0%	0%	0%
Total Enrolled	2	0	0	0	0	0
<b>Native American</b>						
Success	0%	100%	67%	0%	100%	0%
Non-Success	0%	0%	33%	0%	0%	0%
Withdrawal	0%	0%	0%	0%	0%	0%

	Total Percent	0%	100%	100%	0%	100%	0%
	Total Enrolled	<b>0</b>	<b>1</b>	<b>3</b>	<b>0</b>	<b>1</b>	<b>0</b>
<b>Pacific Islander</b>							
	Success	0%	40%	22%	38%	44%	44%
	Non-Success	0%	40%	44%	63%	33%	33%
	Withdrawal	100%	20%	33%	0%	22%	22%
	Total Percent	100%	100%	100%	100%	100%	100%
	Total Enrolled	<b>1</b>	<b>5</b>	<b>9</b>	<b>8</b>	<b>9</b>	<b>9</b>
<b>White</b>							
	Success	94%	91%	68%	69%	64%	55%
	Non-Success	6%	0%	20%	21%	20%	23%
	Withdrawal	0%	9%	12%	10%	16%	23%
	Total Percent	100%	100%	100%	100%	100%	100%
	Total Enrolled	<b>18</b>	<b>22</b>	<b>25</b>	<b>29</b>	<b>25</b>	<b>22</b>