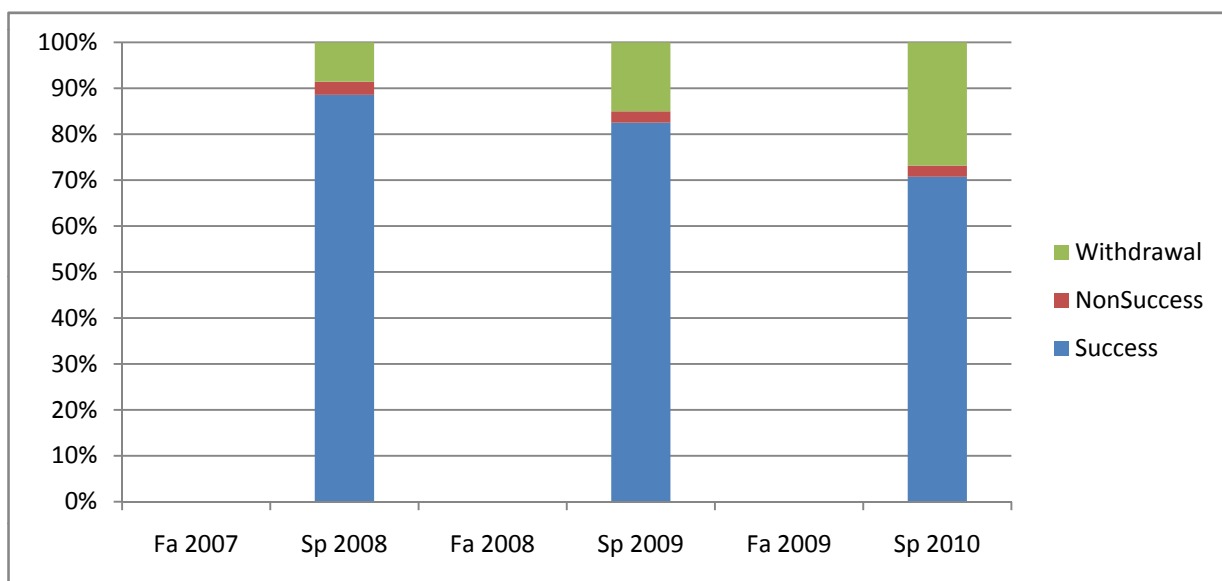
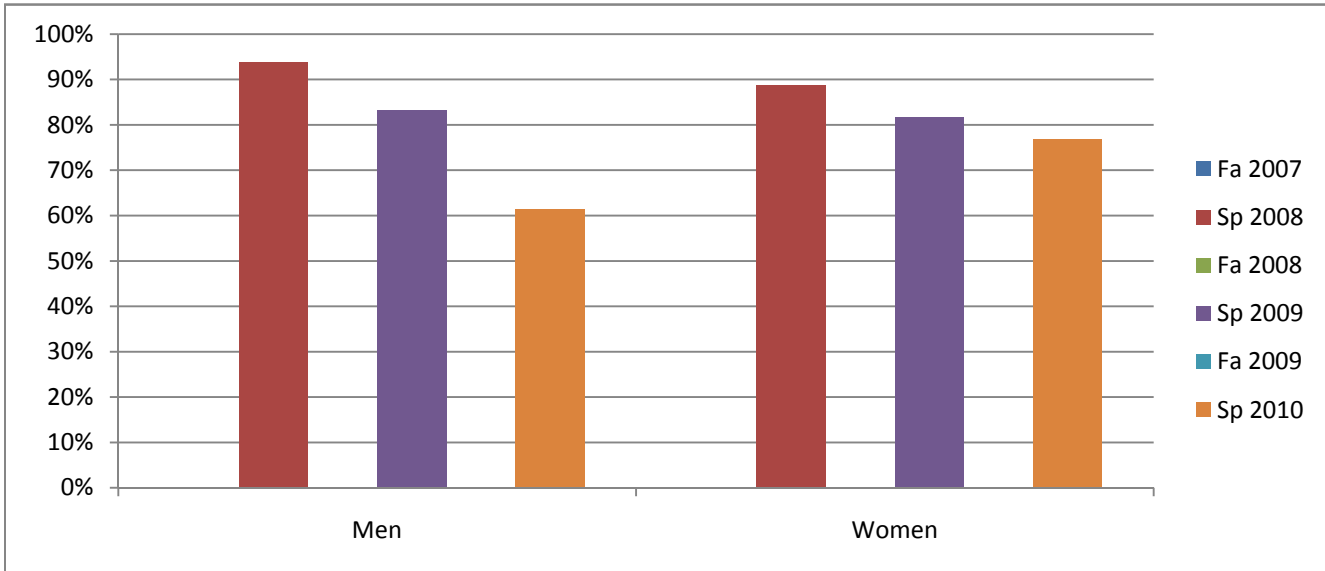


Chabot
Success, Non-Success, and Withdrawal Rates By Semester
Course: ENGL 20



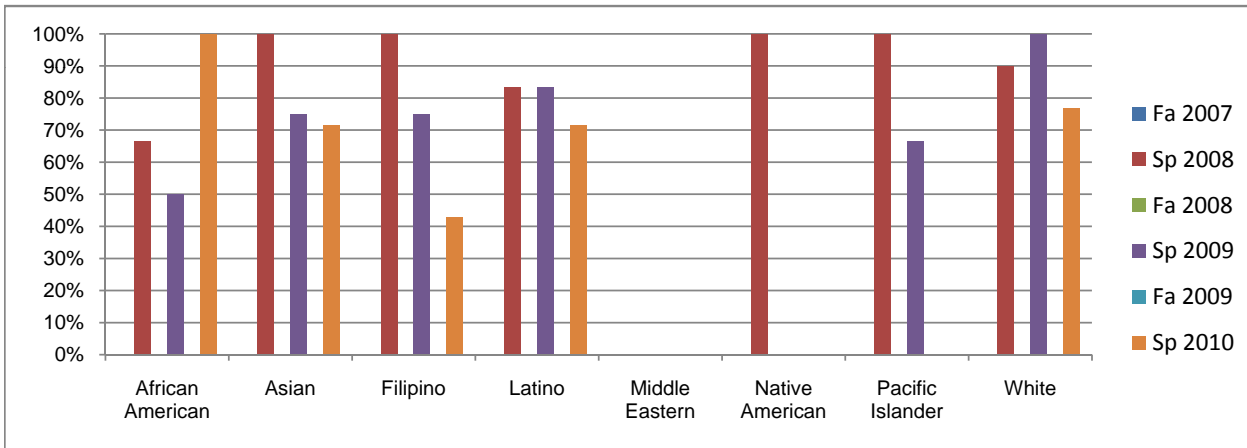
| | Fa 2007 | Sp 2008 | Fa 2008 | Sp 2009 | Fa 2009 | Sp 2010 |
|----------------|----------|-----------|----------|-----------|----------|-----------|
| Success | 0% | 89% | 0% | 83% | 0% | 71% |
| Non-Success | 0% | 3% | 0% | 3% | 0% | 2% |
| Withdrawal | 0% | 9% | 0% | 15% | 0% | 27% |
| Total Percent | 0% | 100% | 0% | 100% | 0% | 100% |
| Total Enrolled | 0 | 35 | 0 | 40 | 0 | 41 |

Chabot
Success Rates By Gender and Semester
Course: ENGL 20



| | Fa 2007 | Sp 2008 | Fa 2008 | Sp 2009 | Fa 2009 | Sp 2010 |
|----------------|---------|---------|---------|---------|---------|---------|
| Men | | | | | | |
| Success | 0% | 94% | 0% | 83% | 0% | 62% |
| Non-Success | 0% | 6% | 0% | 6% | 0% | 8% |
| Withdrawal | 0% | 0% | 0% | 11% | 0% | 31% |
| Total Percent | 0% | 100% | 0% | 100% | 0% | 100% |
| Total Enrolled | 0 | 16 | 0 | 18 | 0 | 13 |
| Women | | | | | | |
| Success | 0% | 89% | 0% | 82% | 0% | 77% |
| Non-Success | 0% | 0% | 0% | 0% | 0% | 0% |
| Withdrawal | 0% | 11% | 0% | 18% | 0% | 23% |
| Total Percent | 0% | 100% | 0% | 100% | 0% | 100% |
| Total Enrolled | 0 | 18 | 0 | 22 | 0 | 26 |

Chabot
Success Rates By Ethnicity and Semester
Course: ENGL 20



| | Fa 2007 | Sp 2008 | Fa 2008 | Sp 2009 | Fa 2009 | Sp 2010 |
|-------------------------|---------|---------|---------|---------|---------|---------|
| African American | | | | | | |
| Success | 0% | 67% | 0% | 50% | 0% | 100% |
| Non-Success | 0% | 0% | 0% | 0% | 0% | 0% |
| Withdrawal | 0% | 33% | 0% | 50% | 0% | 0% |
| Total Percent | 0% | 100% | 0% | 100% | 0% | 100% |
| Total Enrolled | 0 | 3 | 0 | 2 | 0 | 1 |
| Asian | | | | | | |
| Success | 0% | 100% | 0% | 75% | 0% | 71% |
| Non-Success | 0% | 0% | 0% | 0% | 0% | 0% |
| Withdrawal | 0% | 0% | 0% | 25% | 0% | 29% |
| Total Percent | 0% | 100% | 0% | 100% | 0% | 100% |
| Total Enrolled | 0 | 2 | 0 | 8 | 0 | 7 |
| Filipino | | | | | | |
| Success | 0% | 100% | 0% | 75% | 0% | 43% |
| Non-Success | 0% | 0% | 0% | 25% | 0% | 14% |
| Withdrawal | 0% | 0% | 0% | 0% | 0% | 43% |
| Total Percent | 0% | 100% | 0% | 100% | 0% | 100% |
| Total Enrolled | 0 | 5 | 0 | 4 | 0 | 7 |
| Latino | | | | | | |
| Success | 0% | 83% | 0% | 83% | 0% | 71% |
| Non-Success | 0% | 17% | 0% | 0% | 0% | 0% |
| Withdrawal | 0% | 0% | 0% | 17% | 0% | 29% |
| Total Percent | 0% | 100% | 0% | 100% | 0% | 100% |
| Total Enrolled | 0 | 6 | 0 | 12 | 0 | 7 |
| Middle Eastern | | | | | | |
| Success | 0% | 0% | 0% | 0% | 0% | 0% |
| Non-Success | 0% | 0% | 0% | 0% | 0% | 0% |
| Withdrawal | 0% | 0% | 0% | 0% | 0% | 0% |
| Total Percent | 0% | 0% | 0% | 0% | 0% | 0% |
| Total Enrolled | 0 | 0 | 0 | 0 | 0 | 0 |
| Native American | | | | | | |
| Success | 0% | 100% | 0% | 0% | 0% | 0% |
| Non-Success | 0% | 0% | 0% | 0% | 0% | 0% |
| Withdrawal | 0% | 0% | 0% | 0% | 0% | 0% |
| Total Percent | 0% | 100% | 0% | 0% | 0% | 0% |
| Total Enrolled | 0 | 1 | 0 | 0 | 0 | 0 |
| Pacific Islander | | | | | | |
| Success | 0% | 100% | 0% | 67% | 0% | 0% |
| Non-Success | 0% | 0% | 0% | 0% | 0% | 0% |
| Withdrawal | 0% | 0% | 0% | 33% | 0% | 0% |
| Total Percent | 0% | 100% | 0% | 100% | 0% | 0% |
| Total Enrolled | 0 | 1 | 0 | 3 | 0 | 0 |
| White | | | | | | |
| Success | 0% | 90% | 0% | 100% | 0% | 77% |
| Non-Success | 0% | 0% | 0% | 0% | 0% | 0% |
| Withdrawal | 0% | 10% | 0% | 0% | 0% | 23% |
| Total Percent | 0% | 100% | 0% | 100% | 0% | 100% |
| Total Enrolled | 0 | 10 | 0 | 10 | 0 | 13 |