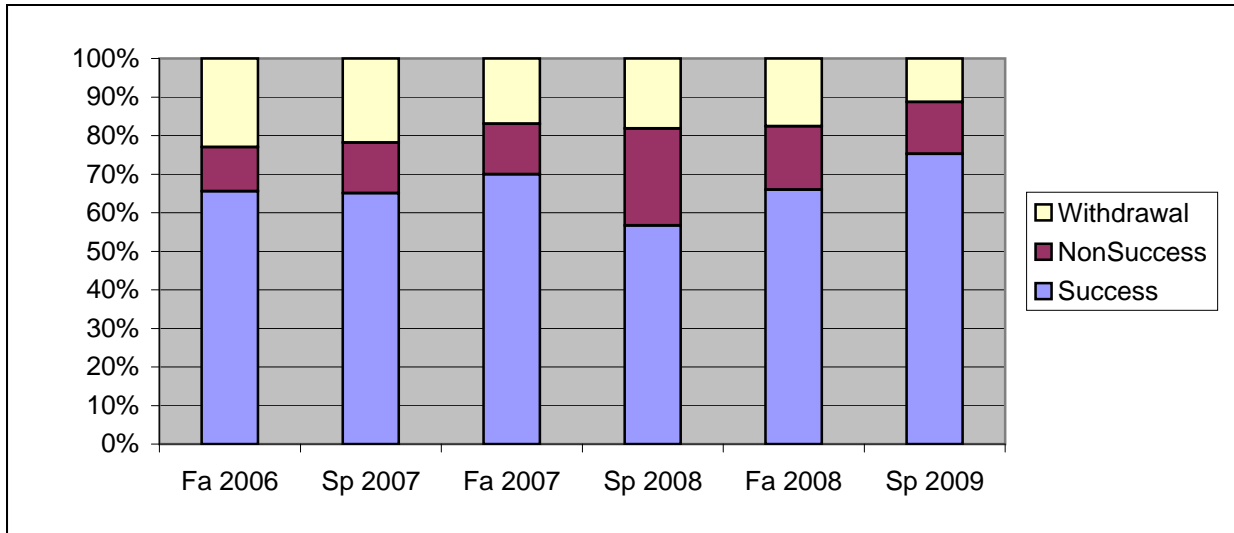
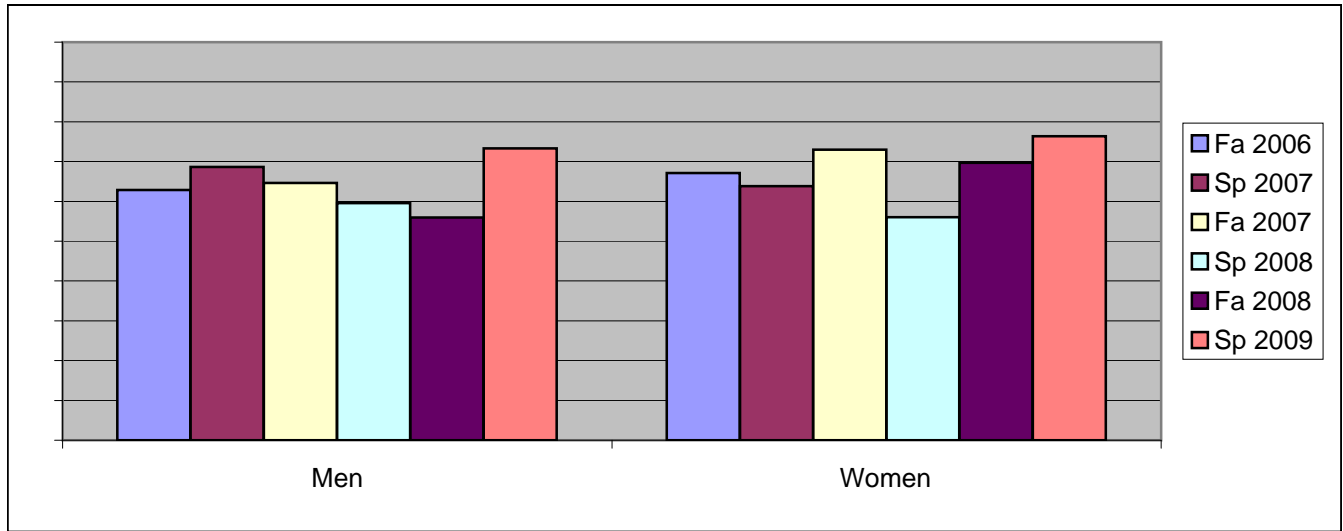


Chabot
Success, Non-Success, and Withdrawal Rates By Semester
Course: SL 64



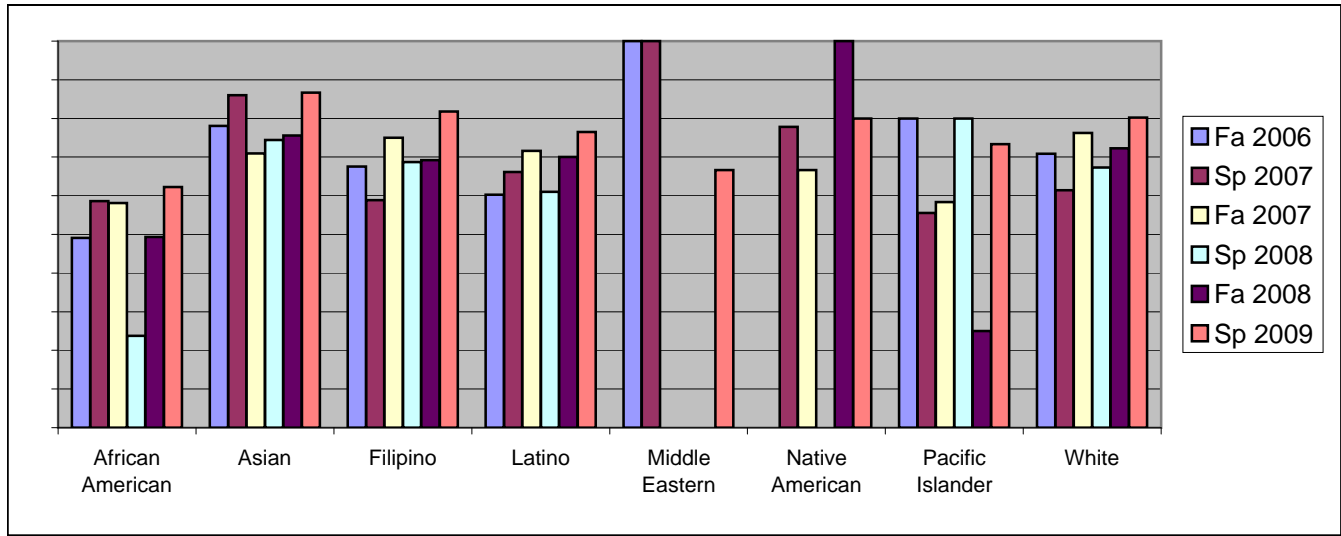
| | Fa 2006 | Sp 2007 | Fa 2007 | Sp 2008 | Fa 2008 | Sp 2009 |
|----------------|------------|------------|------------|------------|------------|------------|
| Success | 66% | 65% | 70% | 57% | 66% | 75% |
| Non-Success | 11% | 13% | 13% | 25% | 16% | 13% |
| Withdrawal | 23% | 22% | 17% | 18% | 18% | 11% |
| Total Percent | 100% | 100% | 100% | 100% | 100% | 100% |
| Total Enrolled | 305 | 312 | 360 | 291 | 335 | 409 |

Chabot
Success Rates By Gender and Semester
Course: SL 64



| | Fa 2006 | Sp 2007 | Fa 2007 | Sp 2008 | Fa 2008 | Sp 2009 |
|----------------|------------|------------|------------|------------|------------|------------|
| Men | | | | | | |
| Success | 63% | 69% | 65% | 60% | 56% | 73% |
| Non-Success | 14% | 7% | 14% | 25% | 22% | 15% |
| Withdrawal | 23% | 24% | 22% | 16% | 23% | 11% |
| Total Percent | 100% | 100% | 100% | 100% | 100% | 100% |
| Total Enrolled | 97 | 99 | 116 | 89 | 93 | 131 |
| Women | | | | | | |
| Success | 67% | 64% | 73% | 56% | 70% | 76% |
| Non-Success | 10% | 16% | 12% | 25% | 15% | 13% |
| Withdrawal | 23% | 20% | 15% | 19% | 15% | 11% |
| Total Percent | 100% | 100% | 100% | 100% | 100% | 100% |
| Total Enrolled | 204 | 210 | 237 | 198 | 234 | 271 |

Chabot
Success Rates By Ethnicity and Semester
Course: SL 64



| | Fa 2006 | Sp 2007 | Fa 2007 | Sp 2008 | Fa 2008 | Sp 2009 |
|-------------------------|-----------|-----------|-----------|-----------|-----------|-----------|
| African American | | | | | | |
| Success | 49% | 59% | 58% | 24% | 49% | 62% |
| Non-Success | 19% | 14% | 18% | 49% | 29% | 19% |
| Withdrawal | 32% | 28% | 24% | 27% | 22% | 18% |
| Total Percent | 100% | 100% | 100% | 100% | 100% | 100% |
| Total Enrolled | 53 | 58 | 74 | 59 | 73 | 98 |
| Asian | | | | | | |
| Success | 78% | 86% | 71% | 74% | 76% | 87% |
| Non-Success | 2% | 0% | 15% | 7% | 17% | 4% |
| Withdrawal | 20% | 14% | 15% | 19% | 7% | 9% |
| Total Percent | 100% | 100% | 100% | 100% | 100% | 100% |
| Total Enrolled | 41 | 43 | 55 | 43 | 41 | 45 |
| Filipino | | | | | | |
| Success | 68% | 59% | 75% | 69% | 69% | 82% |
| Non-Success | 8% | 9% | 11% | 13% | 8% | 9% |
| Withdrawal | 24% | 32% | 14% | 19% | 23% | 9% |
| Total Percent | 100% | 100% | 100% | 100% | 100% | 100% |
| Total Enrolled | 37 | 34 | 36 | 32 | 26 | 33 |
| Latino | | | | | | |
| Success | 60% | 66% | 72% | 61% | 70% | 77% |
| Non-Success | 10% | 15% | 14% | 25% | 14% | 14% |
| Withdrawal | 29% | 19% | 15% | 14% | 16% | 9% |
| Total Percent | 100% | 100% | 100% | 100% | 100% | 100% |
| Total Enrolled | 68 | 62 | 74 | 59 | 80 | 98 |
| Middle Eastern | | | | | | |
| Success | 100% | 100% | 0% | 0% | 0% | 67% |
| Non-Success | 0% | 0% | 0% | 0% | 0% | 33% |
| Withdrawal | 0% | 0% | 0% | 0% | 100% | 0% |

| | | | | | | |
|-------------------------|-----------|-----------|-----------|-----------|-----------|-----------|
| Total Percent | 100% | 100% | 0% | 0% | 100% | 100% |
| Total Enrolled | 1 | 1 | 0 | 0 | 2 | 3 |
| Native American | | | | | | |
| Success | 0% | 78% | 67% | 0% | 100% | 80% |
| Non-Success | 0% | 22% | 0% | 50% | 0% | 20% |
| Withdrawal | 0% | 0% | 33% | 50% | 0% | 0% |
| Total Percent | 0% | 100% | 100% | 100% | 100% | 100% |
| Total Enrolled | 0 | 9 | 3 | 4 | 1 | 5 |
| Pacific Islander | | | | | | |
| Success | 80% | 56% | 58% | 80% | 25% | 73% |
| Non-Success | 20% | 22% | 17% | 10% | 50% | 13% |
| Withdrawal | 0% | 22% | 25% | 10% | 25% | 13% |
| Total Percent | 100% | 100% | 100% | 100% | 100% | 100% |
| Total Enrolled | 5 | 9 | 12 | 10 | 4 | 15 |
| White | | | | | | |
| Success | 71% | 61% | 76% | 67% | 72% | 80% |
| Non-Success | 15% | 16% | 9% | 21% | 12% | 10% |
| Withdrawal | 14% | 23% | 15% | 12% | 15% | 10% |
| Total Percent | 100% | 100% | 100% | 100% | 100% | 100% |
| Total Enrolled | 79 | 70 | 80 | 52 | 65 | 81 |