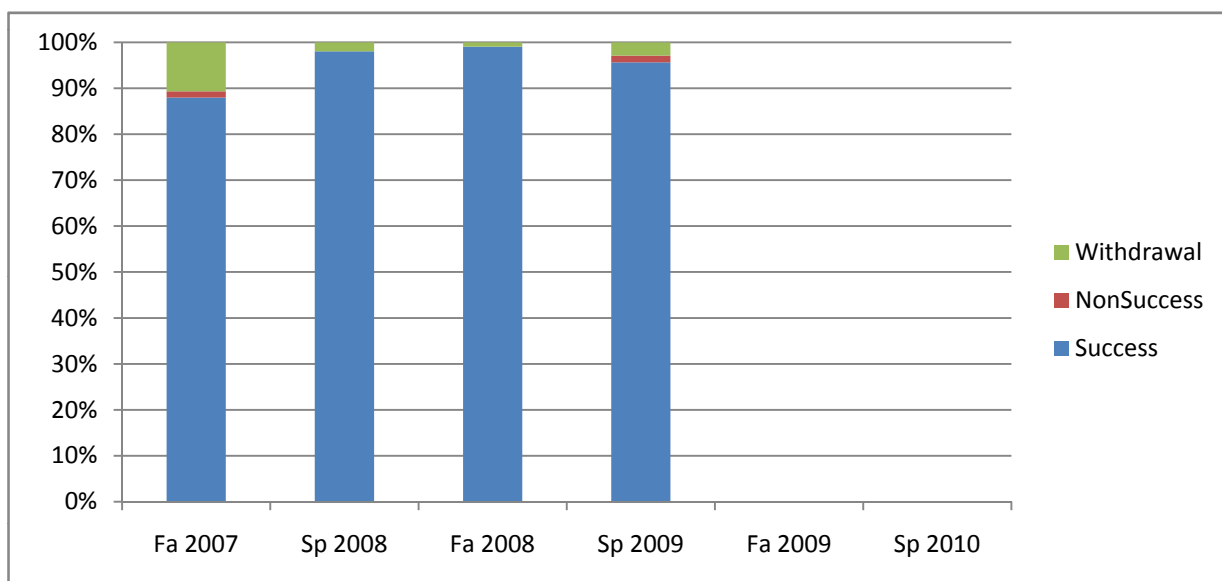
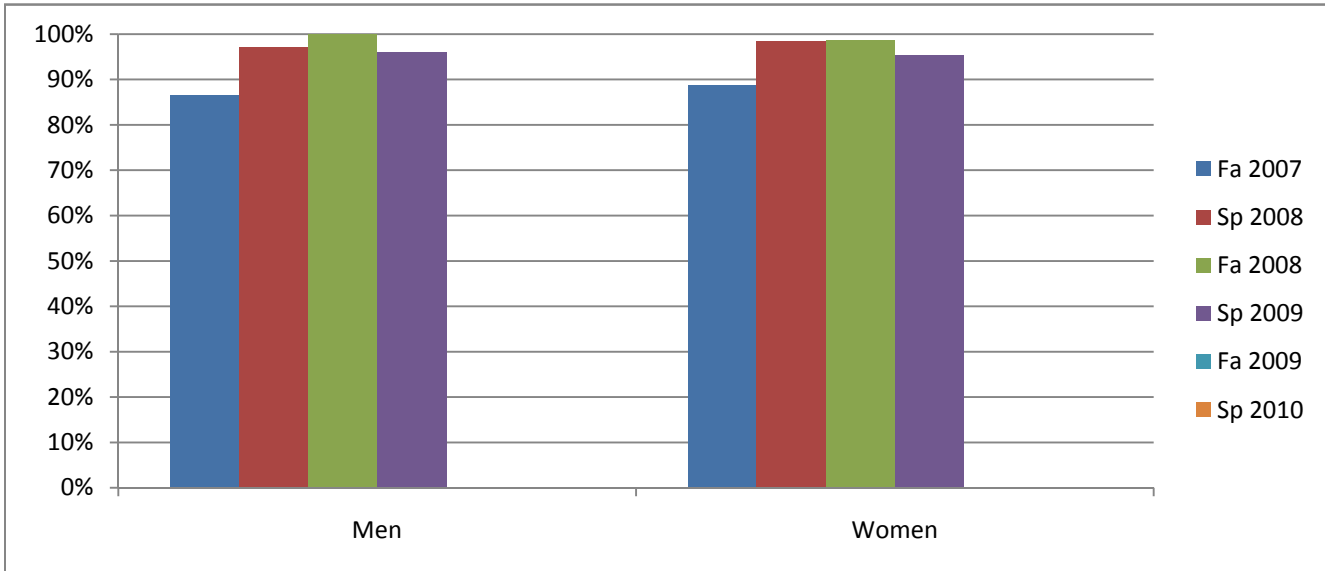


Chabot
Success, Non-Success, and Withdrawal Rates By Semester
Course: TUTR 49A



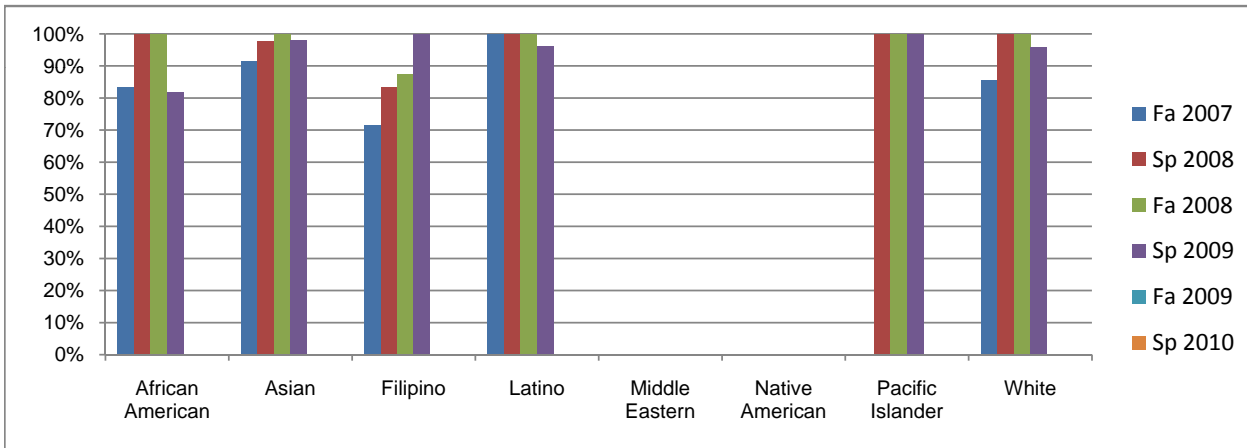
| | Fa 2007 | Sp 2008 | Fa 2008 | Sp 2009 | Fa 2009 | Sp 2010 |
|----------------|-----------|------------|------------|------------|----------|----------|
| Success | 88% | 98% | 99% | 96% | 0% | 0% |
| Non-Success | 1% | 0% | 0% | 1% | 0% | 0% |
| Withdrawal | 11% | 2% | 1% | 3% | 0% | 0% |
| Total Percent | 100% | 100% | 100% | 100% | 0% | 0% |
| Total Enrolled | 75 | 103 | 107 | 138 | 0 | 0 |

Chabot
Success Rates By Gender and Semester
Course: TUTR 49A



| | Fa 2007 | Sp 2008 | Fa 2008 | Sp 2009 | Fa 2009 | Sp 2010 |
|----------------|---------|---------|---------|---------|---------|---------|
| Men | | | | | | |
| Success | 87% | 97% | 100% | 96% | 0% | 0% |
| Non-Success | 3% | 0% | 0% | 2% | 0% | 0% |
| Withdrawal | 10% | 3% | 0% | 2% | 0% | 0% |
| Total Percent | 100% | 100% | 100% | 100% | 0% | 0% |
| Total Enrolled | 30 | 34 | 34 | 51 | 0 | 0 |
| Women | | | | | | |
| Success | 89% | 99% | 99% | 95% | 0% | 0% |
| Non-Success | 0% | 0% | 0% | 1% | 0% | 0% |
| Withdrawal | 11% | 1% | 1% | 3% | 0% | 0% |
| Total Percent | 100% | 100% | 100% | 100% | 0% | 0% |
| Total Enrolled | 45 | 68 | 73 | 87 | 0 | 0 |

Chabot
Success Rates By Ethnicity and Semester
Course: TUTR 49A



| | Fa 2007 | Sp 2008 | Fa 2008 | Sp 2009 | Fa 2009 | Sp 2010 |
|-------------------------|---------|---------|---------|---------|---------|---------|
| African American | | | | | | |
| Success | 83% | 100% | 100% | 82% | 0% | 0% |
| Non-Success | 0% | 0% | 0% | 9% | 0% | 0% |
| Withdrawal | 17% | 0% | 0% | 9% | 0% | 0% |
| Total Percent | 100% | 100% | 100% | 100% | 0% | 0% |
| Total Enrolled | 6 | 6 | 11 | 11 | 0 | 0 |
| Asian | | | | | | |
| Success | 91% | 98% | 100% | 98% | 0% | 0% |
| Non-Success | 3% | 0% | 0% | 0% | 0% | 0% |
| Withdrawal | 6% | 2% | 0% | 2% | 0% | 0% |
| Total Percent | 100% | 100% | 100% | 100% | 0% | 0% |
| Total Enrolled | 35 | 42 | 40 | 50 | 0 | 0 |
| Filipino | | | | | | |
| Success | 71% | 83% | 88% | 100% | 0% | 0% |
| Non-Success | 0% | 0% | 0% | 0% | 0% | 0% |
| Withdrawal | 29% | 17% | 13% | 0% | 0% | 0% |
| Total Percent | 100% | 100% | 100% | 100% | 0% | 0% |
| Total Enrolled | 7 | 6 | 8 | 13 | 0 | 0 |
| Latino | | | | | | |
| Success | 100% | 100% | 100% | 96% | 0% | 0% |
| Non-Success | 0% | 0% | 0% | 0% | 0% | 0% |
| Withdrawal | 0% | 0% | 0% | 4% | 0% | 0% |
| Total Percent | 100% | 100% | 100% | 100% | 0% | 0% |
| Total Enrolled | 6 | 16 | 14 | 25 | 0 | 0 |
| Middle Eastern | | | | | | |
| Success | 0% | 0% | 0% | 0% | 0% | 0% |
| Non-Success | 0% | 0% | 0% | 0% | 0% | 0% |
| Withdrawal | 0% | 0% | 0% | 0% | 0% | 0% |
| Total Percent | 0% | 0% | 0% | 0% | 0% | 0% |
| Total Enrolled | 0 | 0 | 0 | 0 | 0 | 0 |
| Native American | | | | | | |
| Success | 0% | 0% | 0% | 0% | 0% | 0% |
| Non-Success | 0% | 0% | 0% | 0% | 0% | 0% |
| Withdrawal | 0% | 0% | 0% | 0% | 0% | 0% |
| Total Percent | 0% | 0% | 0% | 0% | 0% | 0% |
| Total Enrolled | 0 | 0 | 0 | 0 | 0 | 0 |
| Pacific Islander | | | | | | |
| Success | 0% | 100% | 100% | 100% | 0% | 0% |
| Non-Success | 0% | 0% | 0% | 0% | 0% | 0% |
| Withdrawal | 0% | 0% | 0% | 0% | 0% | 0% |
| Total Percent | 0% | 100% | 100% | 100% | 0% | 0% |
| Total Enrolled | 0 | 1 | 2 | 2 | 0 | 0 |
| White | | | | | | |
| Success | 86% | 100% | 100% | 96% | 0% | 0% |
| Non-Success | 0% | 0% | 0% | 4% | 0% | 0% |
| Withdrawal | 14% | 0% | 0% | 0% | 0% | 0% |
| Total Percent | 100% | 100% | 100% | 100% | 0% | 0% |
| Total Enrolled | 14 | 20 | 22 | 23 | 0 | 0 |