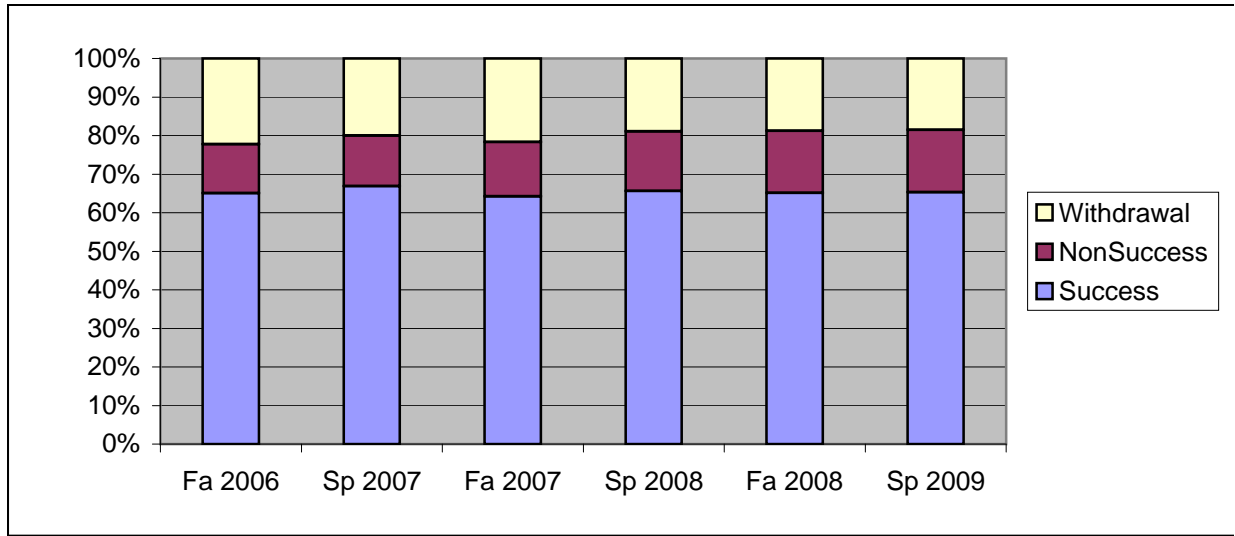
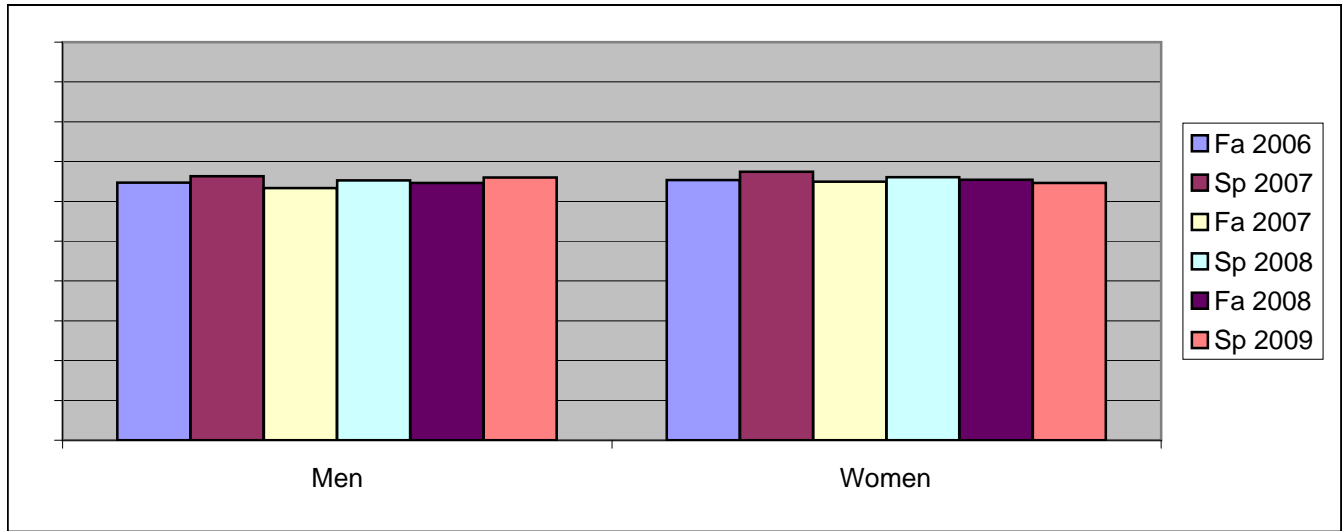


Chabot
Success, Non-Success, and Withdrawal Rates By Semester
College: Chabot



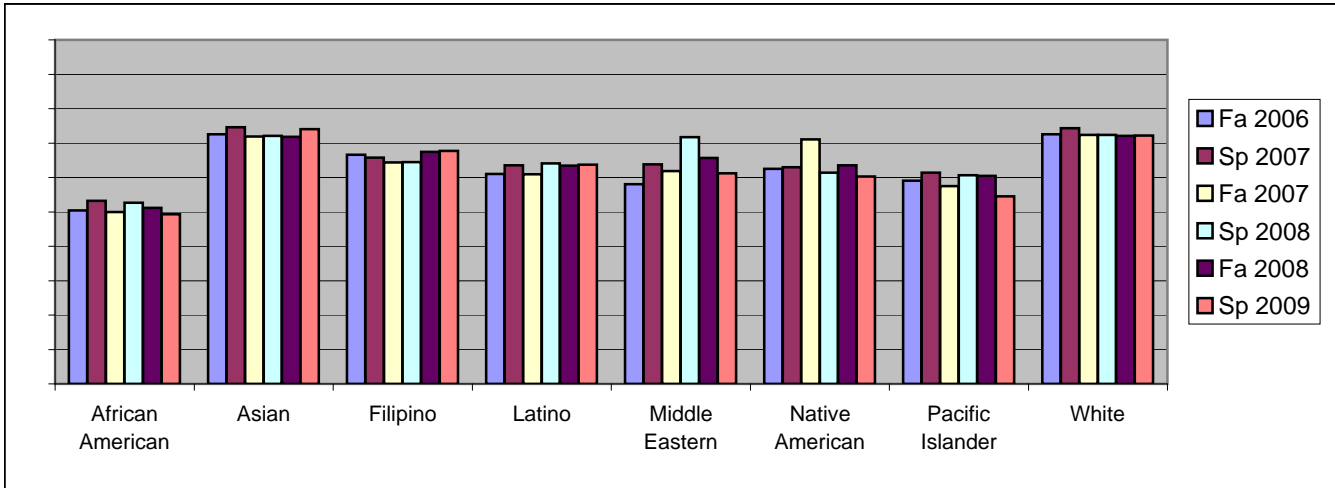
	Fa 2006	Sp 2007	Fa 2007	Sp 2008	Fa 2008	Sp 2009
Success	65%	67%	64%	66%	65%	65%
Non-Success	13%	13%	14%	15%	16%	16%
Withdrawal	22%	20%	22%	19%	19%	19%
Total Percent	100%	100%	100%	100%	100%	100%
Total Enrolled	36,817	35,277	38,169	37,886	39,662	40,299

Chabot
Success Rates By Gender and Semester
College: Chabot



	Fa 2006	Sp 2007	Fa 2007	Sp 2008	Fa 2008	Sp 2009
Men						
Success	65%	66%	63%	65%	65%	66%
Non-Success	13%	14%	15%	16%	17%	16%
Withdrawal	22%	20%	22%	19%	19%	18%
Total Percent	100%	100%	100%	100%	100%	100%
Total Enrolled	16,234	15,270	16,794	16,537	17,381	17,930
Women						
Success	65%	67%	65%	66%	65%	65%
Non-Success	12%	13%	14%	15%	16%	16%
Withdrawal	22%	20%	21%	19%	19%	19%
Total Percent	100%	100%	100%	100%	100%	100%
Total Enrolled	19,911	19,334	20,663	20,669	21,546	21,655

Chabot
Success Rates By Ethnicity and Semester
College: Chabot



	Fa 2006	Sp 2007	Fa 2007	Sp 2008	Fa 2008	Sp 2009
African American						
Success	50%	53%	50%	53%	51%	49%
Non-Success	18%	19%	21%	22%	25%	24%
Withdrawal	31%	28%	29%	25%	24%	26%
Total Percent	100%	100%	100%	100%	100%	100%
Total Enrolled	5,342	4,984	5,943	5,773	6,534	6,643
Asian						
Success	73%	75%	72%	72%	72%	74%
Non-Success	10%	11%	11%	12%	13%	12%
Withdrawal	17%	15%	18%	16%	16%	14%
Total Percent	100%	100%	100%	100%	100%	100%
Total Enrolled	6,579	6,449	6,548	6,559	6,726	6,907
Filipino						
Success	67%	66%	64%	64%	67%	68%
Non-Success	12%	14%	14%	15%	14%	15%
Withdrawal	22%	21%	22%	20%	18%	17%
Total Percent	100%	100%	100%	100%	100%	100%
Total Enrolled	3,786	3,633	3,943	3,702	3,902	3,908
Latino						
Success	61%	64%	61%	64%	63%	64%
Non-Success	15%	14%	16%	17%	17%	18%
Withdrawal	24%	22%	23%	19%	19%	18%
Total Percent	100%	100%	100%	100%	100%	100%
Total Enrolled	8,283	7,759	8,793	8,732	9,624	9,839
Middle Eastern						
Success	58%	64%	62%	72%	66%	61%
Non-Success	12%	11%	16%	13%	17%	18%
Withdrawal	30%	26%	22%	15%	17%	21%
Total Percent	100%	100%	100%	100%	100%	100%
Total Enrolled	155	141	110	92	99	85
Native American						
Success	63%	63%	71%	61%	64%	60%
Non-Success	13%	16%	12%	17%	16%	17%
Withdrawal	24%	21%	17%	22%	21%	22%
Total Percent	100%	100%	100%	100%	100%	100%
Total Enrolled	376	346	308	337	354	340

Pacific Islander

Success	59%	61%	57%	61%	60%	54%
Non-Success	16%	16%	18%	19%	18%	21%
Withdrawal	25%	22%	24%	20%	21%	25%
Total Percent	100%	100%	100%	100%	100%	100%
Total Enrolled	1,050	972	1,082	1,114	1,166	1,160

White

Success	73%	74%	72%	72%	72%	72%
Non-Success	9%	9%	10%	11%	11%	11%
Withdrawal	18%	16%	18%	16%	17%	16%
Total Percent	100%	100%	100%	100%	100%	100%
Total Enrolled	8,030	7,642	7,848	7,885	7,679	7,874