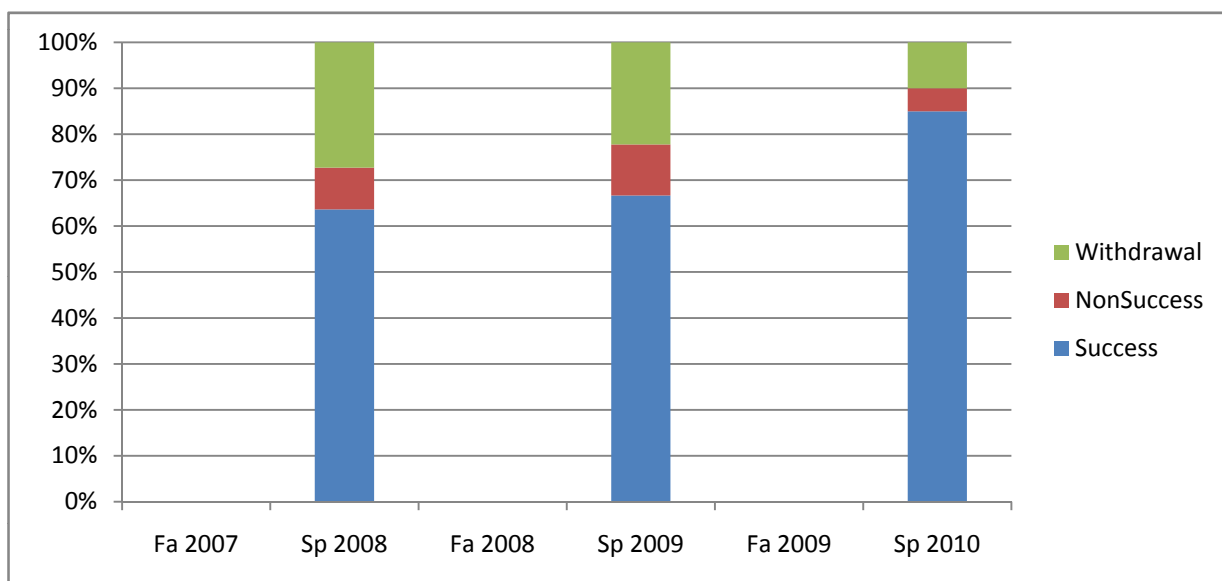
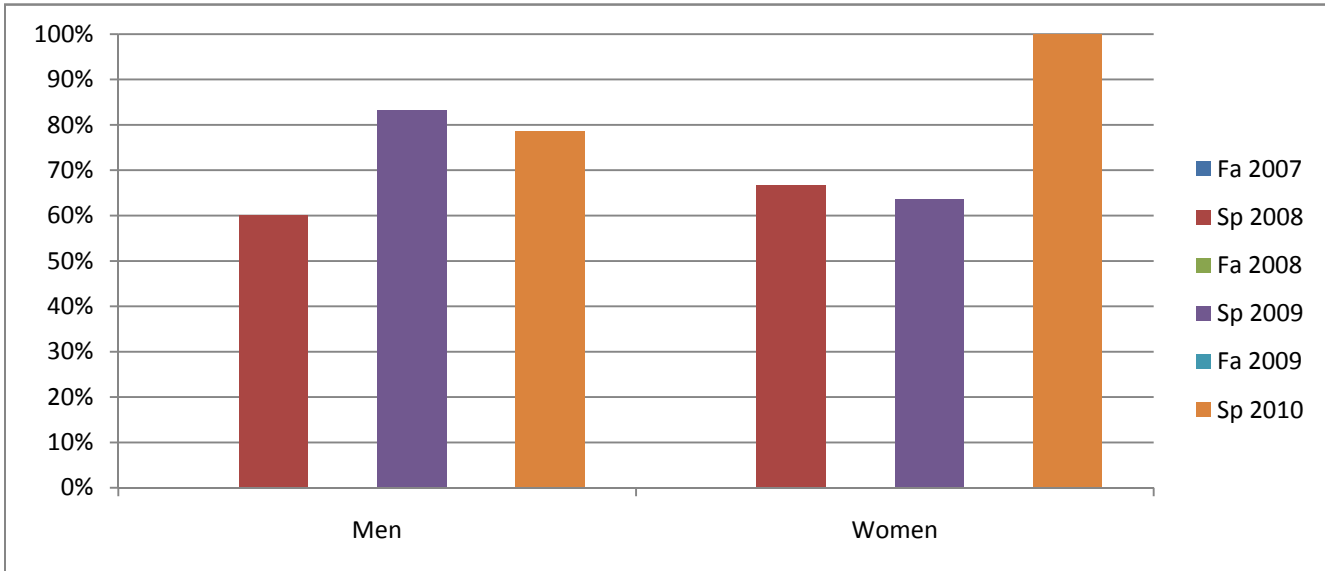


Chabot
Success, Non-Success, and Withdrawal Rates By Semester
Course: DIGM 32B



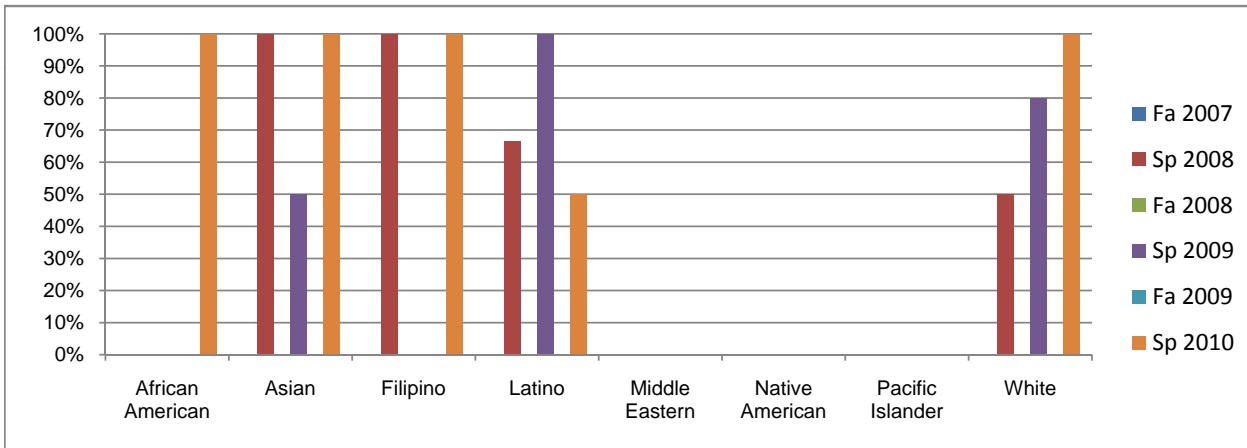
| | Fa 2007 | Sp 2008 | Fa 2008 | Sp 2009 | Fa 2009 | Sp 2010 |
|----------------|----------|-----------|----------|-----------|----------|-----------|
| Success | 0% | 64% | 0% | 67% | 0% | 85% |
| Non-Success | 0% | 9% | 0% | 11% | 0% | 5% |
| Withdrawal | 0% | 27% | 0% | 22% | 0% | 10% |
| Total Percent | 0% | 100% | 0% | 100% | 0% | 100% |
| Total Enrolled | 0 | 11 | 0 | 18 | 0 | 20 |

Chabot
Success Rates By Gender and Semester
Course: DIGM 32B



| | Fa 2007 | Sp 2008 | Fa 2008 | Sp 2009 | Fa 2009 | Sp 2010 |
|----------------|---------|---------|---------|---------|---------|---------|
| Men | | | | | | |
| Success | 0% | 60% | 0% | 83% | 0% | 79% |
| Non-Success | 0% | 0% | 0% | 17% | 0% | 7% |
| Withdrawal | 0% | 40% | 0% | 0% | 0% | 14% |
| Total Percent | 0% | 100% | 0% | 100% | 0% | 100% |
| Total Enrolled | 0 | 5 | 0 | 6 | 0 | 14 |
| Women | | | | | | |
| Success | 0% | 67% | 0% | 64% | 0% | 100% |
| Non-Success | 0% | 17% | 0% | 9% | 0% | 0% |
| Withdrawal | 0% | 17% | 0% | 27% | 0% | 0% |
| Total Percent | 0% | 100% | 0% | 100% | 0% | 100% |
| Total Enrolled | 0 | 6 | 0 | 11 | 0 | 6 |

Chabot
Success Rates By Ethnicity and Semester
Course: DIGM 32B



| | Fa 2007 | Sp 2008 | Fa 2008 | Sp 2009 | Fa 2009 | Sp 2010 |
|-------------------------|---------|---------|---------|---------|---------|---------|
| African American | | | | | | |
| Success | 0% | 0% | 0% | 0% | 0% | 100% |
| Non-Success | 0% | 0% | 0% | 0% | 0% | 0% |
| Withdrawal | 0% | 100% | 0% | 0% | 0% | 0% |
| Total Percent | 0% | 100% | 0% | 0% | 0% | 100% |
| Total Enrolled | 0 | 2 | 0 | 0 | 0 | 2 |
| Asian | | | | | | |
| Success | 0% | 100% | 0% | 50% | 0% | 100% |
| Non-Success | 0% | 0% | 0% | 17% | 0% | 0% |
| Withdrawal | 0% | 0% | 0% | 33% | 0% | 0% |
| Total Percent | 0% | 100% | 0% | 100% | 0% | 100% |
| Total Enrolled | 0 | 3 | 0 | 6 | 0 | 3 |
| Filipino | | | | | | |
| Success | 0% | 100% | 0% | 0% | 0% | 100% |
| Non-Success | 0% | 0% | 0% | 0% | 0% | 0% |
| Withdrawal | 0% | 0% | 0% | 0% | 0% | 0% |
| Total Percent | 0% | 100% | 0% | 0% | 0% | 100% |
| Total Enrolled | 0 | 1 | 0 | 0 | 0 | 3 |
| Latino | | | | | | |
| Success | 0% | 67% | 0% | 100% | 0% | 50% |
| Non-Success | 0% | 0% | 0% | 0% | 0% | 0% |
| Withdrawal | 0% | 33% | 0% | 0% | 0% | 50% |
| Total Percent | 0% | 100% | 0% | 100% | 0% | 100% |
| Total Enrolled | 0 | 3 | 0 | 3 | 0 | 4 |
| Middle Eastern | | | | | | |
| Success | 0% | 0% | 0% | 0% | 0% | 0% |
| Non-Success | 0% | 0% | 0% | 0% | 0% | 0% |
| Withdrawal | 0% | 0% | 0% | 0% | 0% | 0% |
| Total Percent | 0% | 0% | 0% | 0% | 0% | 0% |
| Total Enrolled | 0 | 0 | 0 | 0 | 0 | 0 |
| Native American | | | | | | |
| Success | 0% | 0% | 0% | 0% | 0% | 0% |
| Non-Success | 0% | 0% | 0% | 0% | 0% | 0% |
| Withdrawal | 0% | 0% | 0% | 100% | 0% | 0% |
| Total Percent | 0% | 0% | 0% | 100% | 0% | 0% |
| Total Enrolled | 0 | 0 | 0 | 1 | 0 | 0 |
| Pacific Islander | | | | | | |
| Success | 0% | 0% | 0% | 0% | 0% | 0% |
| Non-Success | 0% | 0% | 0% | 0% | 0% | 0% |
| Withdrawal | 0% | 0% | 0% | 0% | 0% | 0% |
| Total Percent | 0% | 0% | 0% | 0% | 0% | 0% |
| Total Enrolled | 0 | 0 | 0 | 0 | 0 | 0 |
| White | | | | | | |
| Success | 0% | 50% | 0% | 80% | 0% | 100% |
| Non-Success | 0% | 50% | 0% | 20% | 0% | 0% |
| Withdrawal | 0% | 0% | 0% | 0% | 0% | 0% |
| Total Percent | 0% | 100% | 0% | 100% | 0% | 100% |
| Total Enrolled | 0 | 2 | 0 | 5 | 0 | 5 |