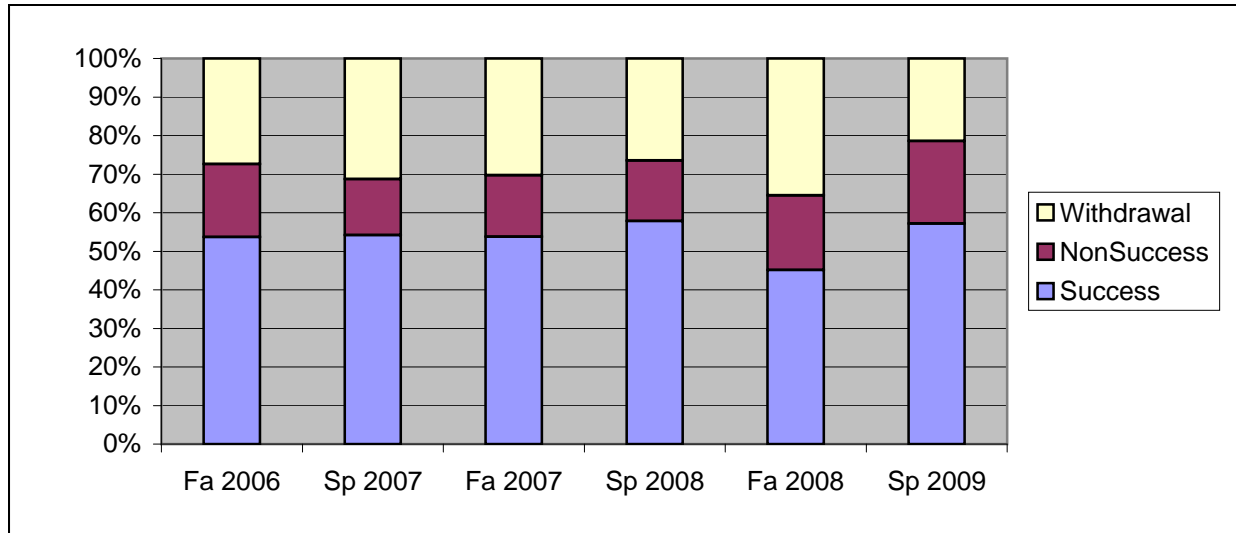
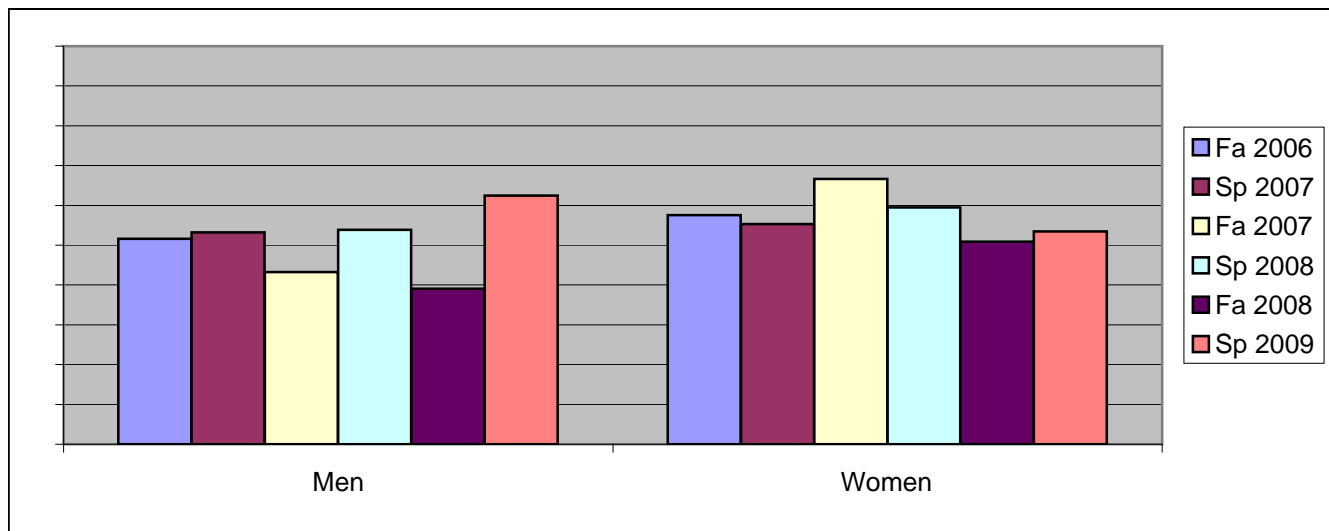


Chabot  
Success, Non-Success, and Withdrawal Rates By Semester  
Course: ASTR 20



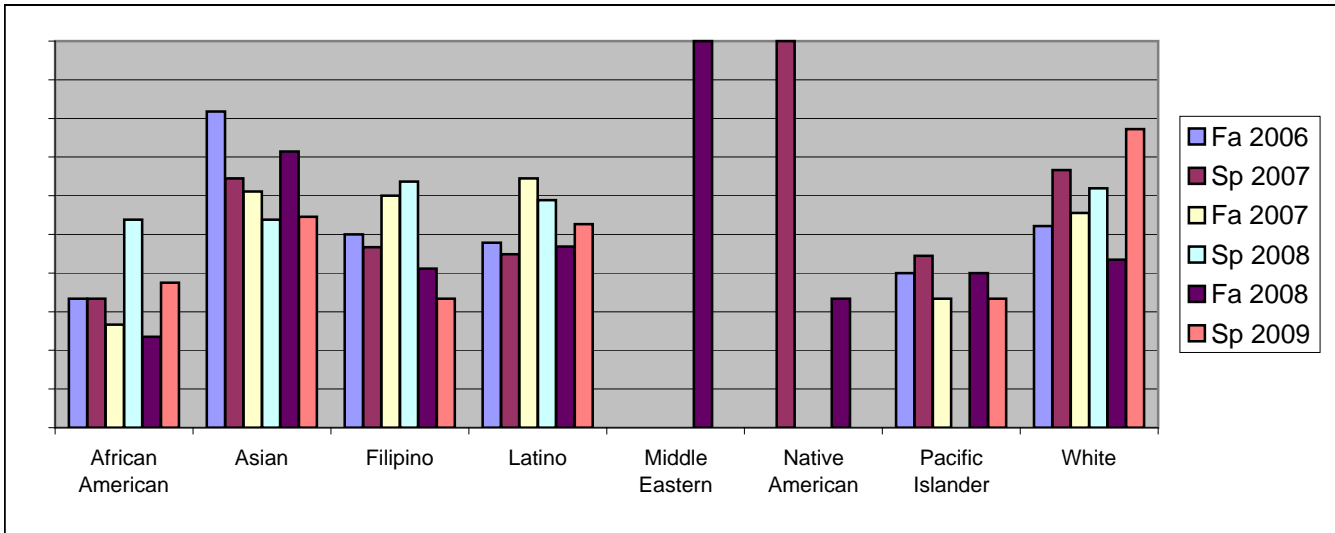
	Fa 2006	Sp 2007	Fa 2007	Sp 2008	Fa 2008	Sp 2009
Success	54%	54%	54%	58%	45%	57%
Non-Success	19%	14%	16%	16%	19%	21%
Withdrawal	27%	31%	30%	27%	35%	21%
Total Percent	100%	100%	100%	100%	100%	100%
Total Enrolled	95	166	119	83	124	84

Chabot  
Success Rates By Gender and Semester  
Course: ASTR 20



	Fa 2006	Sp 2007	Fa 2007	Sp 2008	Fa 2008	Sp 2009
<b>Men</b>						
Success	52%	53%	43%	54%	39%	63%
Non-Success	26%	19%	18%	21%	28%	20%
Withdrawal	23%	27%	39%	26%	33%	18%
Total Percent	100%	100%	100%	100%	100%	100%
Total Enrolled	<b>62</b>	<b>77</b>	<b>67</b>	<b>39</b>	<b>64</b>	<b>40</b>
<b>Women</b>						
Success	58%	55%	67%	60%	51%	53%
Non-Success	6%	9%	14%	12%	10%	23%
Withdrawal	36%	35%	20%	29%	39%	23%
Total Percent	100%	100%	100%	100%	100%	100%
Total Enrolled	<b>33</b>	<b>85</b>	<b>51</b>	<b>42</b>	<b>59</b>	<b>43</b>

Chabot  
Success Rates By Ethnicity and Semester  
Course: ASTR 20



	Fa 2006	Sp 2007	Fa 2007	Sp 2008	Fa 2008	Sp 2009
<b>African American</b>						
Success	33%	33%	27%	54%	24%	38%
Non-Success	0%	20%	20%	23%	29%	38%
Withdrawal	67%	47%	53%	23%	47%	25%
Total Percent	100%	100%	100%	100%	100%	100%
Total Enrolled	3	15	15	13	17	8
<b>Asian</b>						
Success	82%	65%	61%	54%	71%	55%
Non-Success	18%	13%	6%	15%	7%	18%
Withdrawal	0%	23%	33%	31%	21%	27%
Total Percent	100%	100%	100%	100%	100%	100%
Total Enrolled	11	31	18	13	14	11
<b>Filipino</b>						
Success	50%	47%	60%	64%	41%	33%
Non-Success	13%	13%	13%	18%	29%	33%
Withdrawal	38%	40%	27%	18%	29%	33%
Total Percent	100%	100%	100%	100%	100%	100%
Total Enrolled	24	15	15	11	17	3
<b>Latino</b>						
Success	48%	45%	65%	59%	47%	53%
Non-Success	30%	14%	16%	12%	22%	26%
Withdrawal	22%	41%	19%	29%	31%	21%
Total Percent	100%	100%	100%	100%	100%	100%
Total Enrolled	23	29	31	17	32	19
<b>Middle Eastern</b>						
Success	0%	0%	0%	0%	100%	0%
Non-Success	0%	0%	0%	0%	0%	0%
Withdrawal	0%	100%	0%	0%	0%	0%
Total Percent	0%	100%	0%	0%	100%	0%
Total Enrolled	0	1	0	0	1	0
<b>Native American</b>						
Success	0%	100%	0%	0%	33%	0%
Non-Success	0%	0%	0%	0%	33%	0%
Withdrawal	0%	0%	100%	100%	33%	0%

	Total Percent	0%	100%	100%	100%	100%	0%
	Total Enrolled	<b>0</b>	<b>1</b>	<b>1</b>	<b>1</b>	<b>3</b>	<b>0</b>
<b>Pacific Islander</b>							
	Success	40%	44%	33%	0%	40%	33%
	Non-Success	0%	22%	67%	0%	0%	33%
	Withdrawal	60%	33%	0%	100%	60%	33%
	Total Percent	100%	100%	100%	100%	100%	100%
	Total Enrolled	<b>5</b>	<b>9</b>	<b>3</b>	<b>1</b>	<b>5</b>	<b>9</b>
<b>White</b>							
	Success	52%	67%	56%	62%	43%	77%
	Non-Success	26%	17%	7%	14%	17%	9%
	Withdrawal	22%	17%	37%	24%	39%	14%
	Total Percent	100%	100%	100%	100%	100%	100%
	Total Enrolled	<b>23</b>	<b>42</b>	<b>27</b>	<b>21</b>	<b>23</b>	<b>22</b>