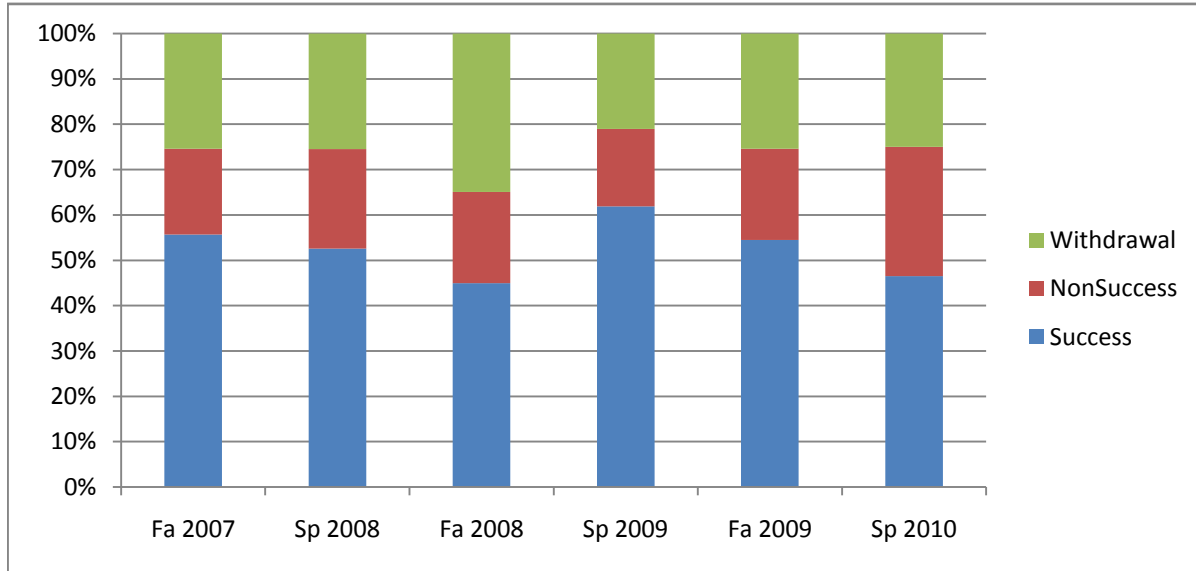
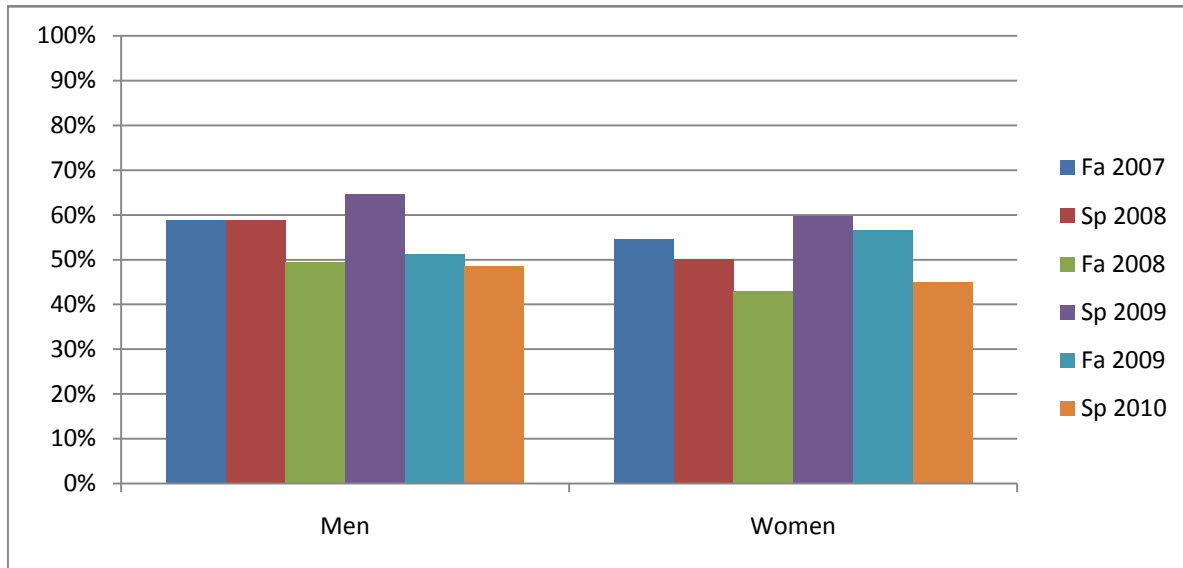


Chabot  
Success, Non-Success, and Withdrawal Rates By Semester  
Course: BIOL 31



	Fa 2007	Sp 2008	Fa 2008	Sp 2009	Fa 2009	Sp 2010
Success	56%	53%	45%	62%	55%	46%
Non-Success	19%	22%	20%	17%	20%	29%
Withdrawal	25%	25%	35%	21%	25%	25%
Total Percent	100%	100%	100%	100%	100%	100%
Total Enrolled	<b>307</b>	<b>314</b>	<b>298</b>	<b>252</b>	<b>299</b>	<b>256</b>

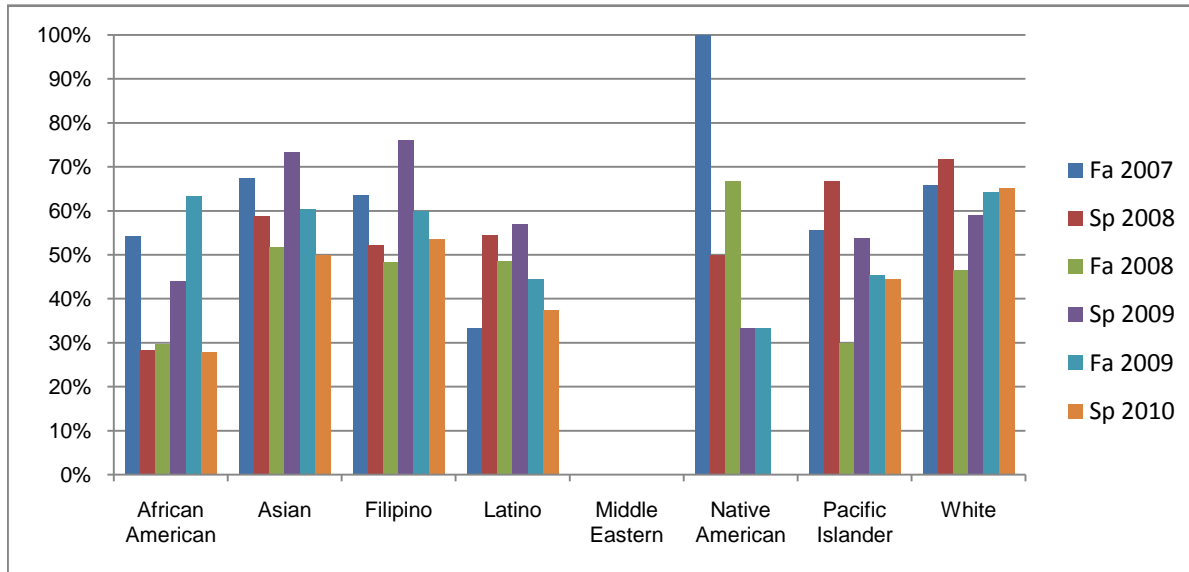
Chabot  
Success Rates By Gender and Semester  
Course: BIOL 31



	Fa 2007	Sp 2008	Fa 2008	Sp 2009	Fa 2009	Sp 2010
<b>Men</b>						
Success	59%	59%	50%	65%	51%	49%
Non-Success	16%	22%	14%	14%	22%	24%
Withdrawal	25%	19%	37%	21%	27%	27%
Total Percent	100%	100%	100%	100%	100%	100%
Total Enrolled	<b>85</b>	<b>78</b>	<b>101</b>	<b>85</b>	<b>86</b>	<b>74</b>
<b>Women</b>						
Success	55%	50%	43%	60%	57%	45%
Non-Success	20%	22%	24%	19%	19%	31%
Withdrawal	26%	27%	33%	21%	25%	24%
Total Percent	100%	100%	100%	100%	100%	100%
Total Enrolled	<b>220</b>	<b>233</b>	<b>193</b>	<b>164</b>	<b>208</b>	<b>180</b>

# Ethnicity\_Totals\_Course

## Chabot Success Rates By Ethnicity and Semester Course: BIOL 31



	Fa 2007	Sp 2008	Fa 2008	Sp 2009	Fa 2009	Sp 2010
<b>African American</b>						
Success	54%	28%	30%	44%	63%	28%
Non-Success	11%	36%	22%	21%	13%	36%
Withdrawal	34%	36%	49%	35%	23%	36%
Total Percent	100%	100%	100%	100%	100%	100%
Total Enrolled	<b>35</b>	<b>53</b>	<b>37</b>	<b>34</b>	<b>30</b>	<b>25</b>
<b>Asian</b>						
Success	67%	59%	52%	73%	60%	50%
Non-Success	13%	24%	17%	20%	17%	27%
Withdrawal	20%	18%	31%	7%	23%	23%
Total Percent	100%	100%	100%	100%	100%	100%
Total Enrolled	<b>46</b>	<b>51</b>	<b>54</b>	<b>30</b>	<b>48</b>	<b>48</b>
<b>Filipino</b>						
Success	64%	52%	48%	76%	60%	53%
Non-Success	18%	28%	23%	16%	16%	28%
Withdrawal	19%	20%	28%	8%	24%	19%
Total Percent	100%	100%	100%	100%	100%	100%
Total Enrolled	<b>74</b>	<b>65</b>	<b>60</b>	<b>50</b>	<b>70</b>	<b>43</b>
<b>Latino</b>						
Success	33%	54%	49%	57%	45%	37%
Non-Success	36%	19%	16%	23%	28%	36%
Withdrawal	31%	26%	35%	20%	27%	27%
Total Percent	100%	100%	100%	100%	100%	100%
Total Enrolled	<b>72</b>	<b>68</b>	<b>74</b>	<b>65</b>	<b>74</b>	<b>75</b>
<b>Middle Eastern</b>						
Success	0%	0%	0%	0%	0%	0%
Non-Success	0%	0%	0%	0%	0%	0%
Withdrawal	0%	100%	0%	0%	0%	0%

Ethnicity\_Totals\_Course

Total Percent	0%	100%	0%	0%	0%	0%
Total Enrolled	<b>0</b>	<b>1</b>	<b>0</b>	<b>0</b>	<b>0</b>	<b>0</b>
<b>Native American</b>						
Success	100%	50%	67%	33%	33%	0%
Non-Success	0%	0%	0%	0%	0%	0%
Withdrawal	0%	50%	33%	67%	67%	0%
Total Percent	100%	100%	100%	100%	100%	0%
Total Enrolled	<b>2</b>	<b>2</b>	<b>3</b>	<b>3</b>	<b>3</b>	<b>0</b>
<b>Pacific Islander</b>						
Success	56%	67%	30%	54%	45%	44%
Non-Success	0%	8%	30%	0%	27%	33%
Withdrawal	44%	25%	40%	46%	27%	22%
Total Percent	100%	100%	100%	100%	100%	100%
Total Enrolled	<b>9</b>	<b>12</b>	<b>10</b>	<b>13</b>	<b>11</b>	<b>9</b>
<b>White</b>						
Success	66%	72%	47%	59%	64%	65%
Non-Success	15%	3%	23%	18%	17%	14%
Withdrawal	20%	26%	30%	23%	19%	21%
Total Percent	100%	100%	100%	100%	100%	100%
Total Enrolled	<b>41</b>	<b>39</b>	<b>43</b>	<b>39</b>	<b>42</b>	<b>43</b>