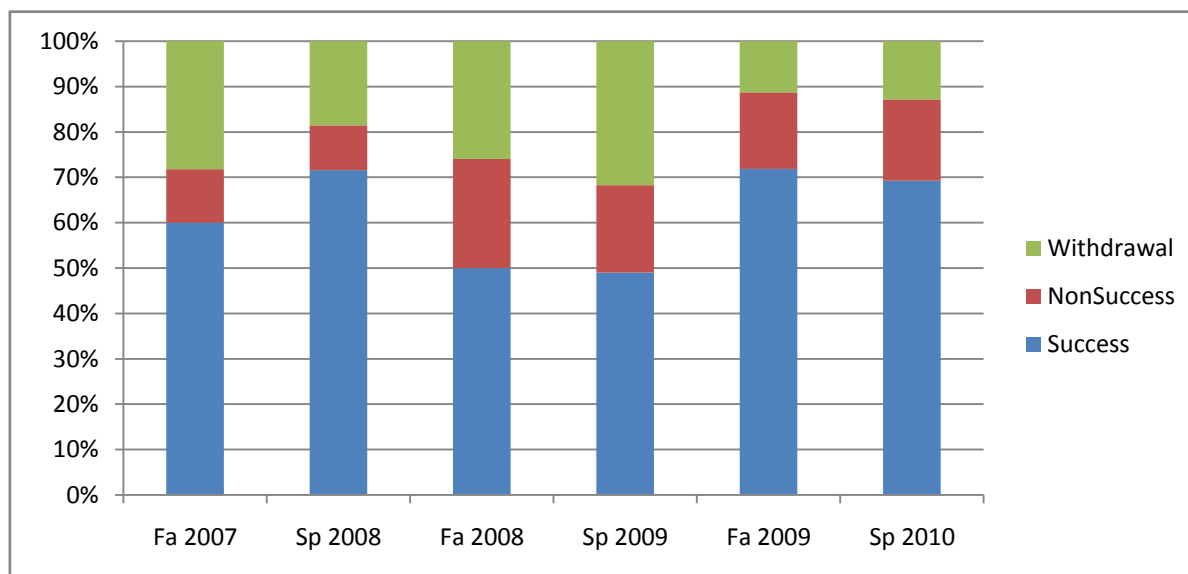


College_Totals_Course

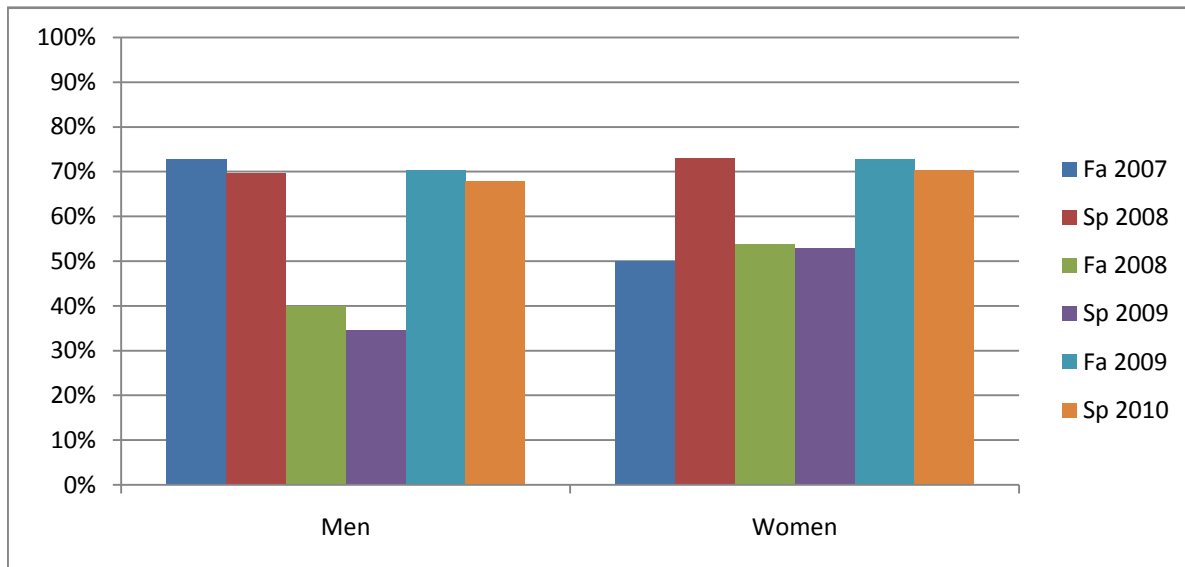
Chabot Success, Non-Success, and Withdrawal Rates By Semester Course: BIOL 50



	Fa 2007	Sp 2008	Fa 2008	Sp 2009	Fa 2009	Sp 2010
Success	60%	72%	50%	49%	72%	69%
Non-Success	12%	10%	24%	19%	17%	18%
Withdrawal	28%	19%	26%	32%	11%	13%
Total Percent	100%	100%	100%	100%	100%	100%
Total Enrolled	85	81	54	104	71	78

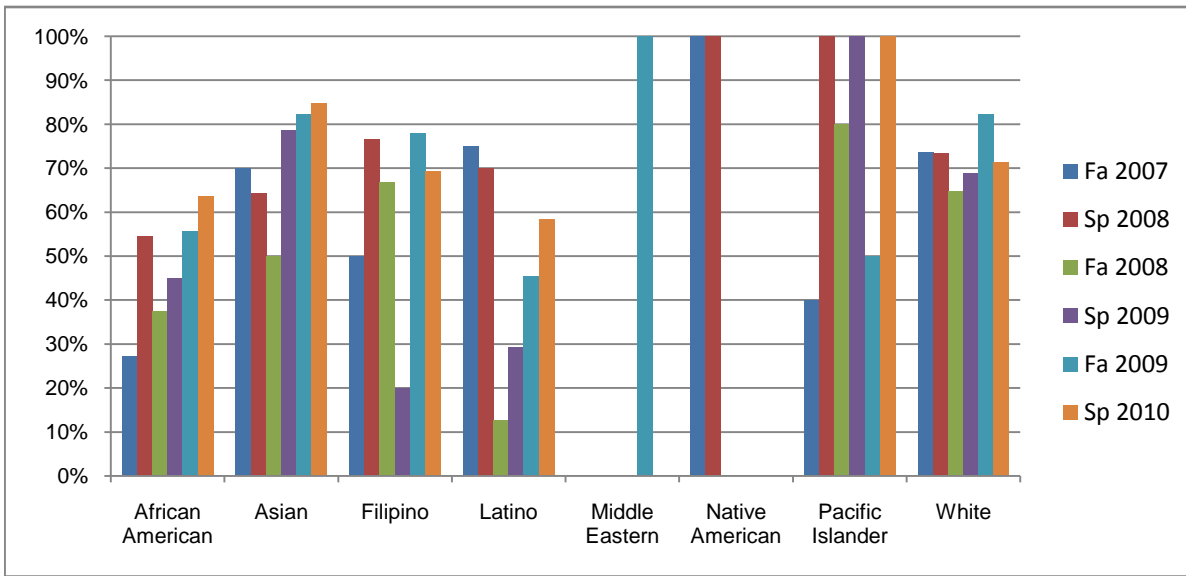
Gender_Totals_Course

Chabot Success Rates By Gender and Semester Course: BIOL 50



	Fa 2007	Sp 2008	Fa 2008	Sp 2009	Fa 2009	Sp 2010
Men						
Success	73%	70%	40%	35%	70%	68%
Non-Success	9%	15%	27%	15%	15%	23%
Withdrawal	18%	15%	33%	50%	15%	10%
Total Percent	100%	100%	100%	100%	100%	100%
Total Enrolled	33	33	15	26	27	31
Women						
Success	50%	73%	54%	53%	73%	70%
Non-Success	14%	6%	23%	19%	18%	15%
Withdrawal	36%	21%	23%	28%	9%	15%
Total Percent	100%	100%	100%	100%	100%	100%
Total Enrolled	50	48	39	72	44	47

Chabot
Success Rates By Ethnicity and Semester
Course: BIOL 50



	Fa 2007	Sp 2008	Fa 2008	Sp 2009	Fa 2009	Sp 2010
African American						
Success	27%	55%	38%	45%	56%	64%
Non-Success	27%	18%	38%	30%	11%	27%
Withdrawal	45%	27%	25%	25%	33%	9%
Total Percent	100%	100%	100%	100%	100%	100%
Total Enrolled	11	11	8	20	9	11
Asian						
Success	70%	64%	50%	79%	82%	85%
Non-Success	10%	14%	25%	14%	6%	8%
Withdrawal	20%	21%	25%	7%	12%	8%
Total Percent	100%	100%	100%	100%	100%	100%
Total Enrolled	10	14	8	14	17	13
Filipino						
Success	50%	76%	67%	20%	78%	69%
Non-Success	17%	0%	17%	7%	22%	15%
Withdrawal	33%	24%	17%	73%	0%	15%
Total Percent	100%	100%	100%	100%	100%	100%
Total Enrolled	12	17	6	15	9	13
Latino						
Success	75%	70%	13%	29%	45%	58%
Non-Success	0%	10%	38%	25%	45%	25%
Withdrawal	25%	20%	50%	46%	9%	17%
Total Percent	100%	100%	100%	100%	100%	100%
Total Enrolled	16	10	8	24	11	12
Middle Eastern						
Success	0%	0%	0%	0%	100%	0%
Non-Success	0%	0%	0%	0%	0%	0%
Withdrawal	0%	0%	0%	0%	0%	0%
Total Percent	0%	0%	0%	0%	100%	0%
Total Enrolled	0	0	0	0	1	0
Native American						
Success	100%	100%	0%	0%	0%	0%
Non-Success	0%	0%	0%	0%	0%	0%
Withdrawal	0%	0%	0%	0%	0%	0%

	Total Percent	100%	100%	0%	0%	0%	0%
	Total Enrolled	1	1	0	0	0	0
Pacific Islander							
	Success	40%	100%	80%	100%	50%	100%
	Non-Success	0%	0%	0%	0%	0%	0%
	Withdrawal	60%	0%	20%	0%	50%	0%
	Total Percent	100%	100%	100%	100%	100%	100%
	Total Enrolled	5	2	5	1	2	1
White							
	Success	74%	73%	65%	69%	82%	71%
	Non-Success	11%	13%	18%	19%	12%	19%
	Withdrawal	16%	13%	18%	13%	6%	10%
	Total Percent	100%	100%	100%	100%	100%	100%
	Total Enrolled	19	15	17	16	17	21