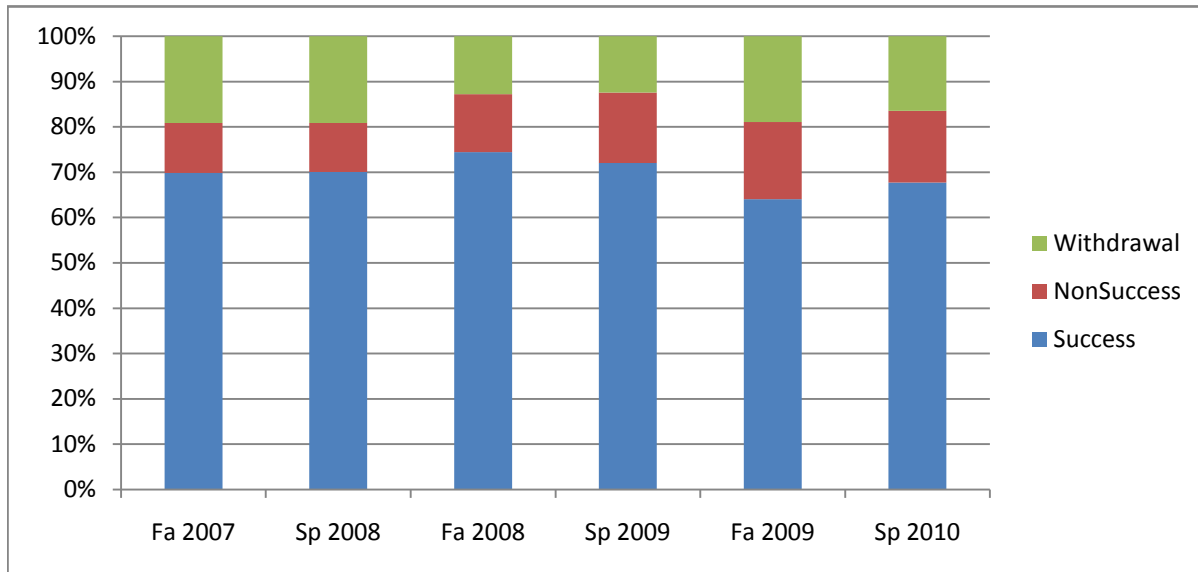
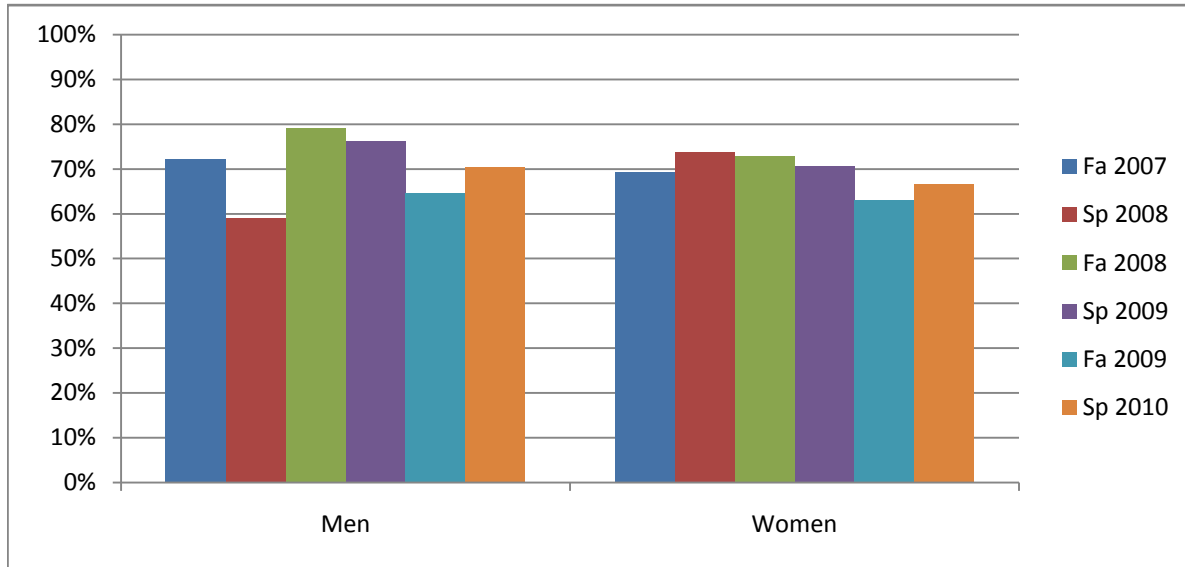


Chabot
Success, Non-Success, and Withdrawal Rates By Semester
Course: CHEM 30A



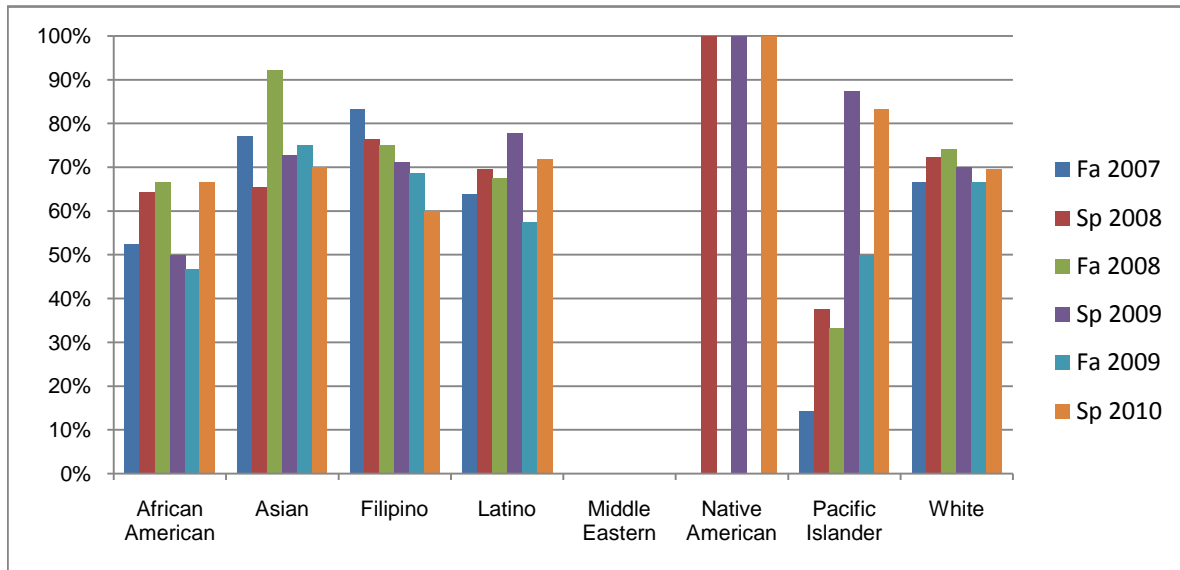
| | Fa 2007 | Sp 2008 | Fa 2008 | Sp 2009 | Fa 2009 | Sp 2010 |
|----------------|---------|---------|---------|---------|---------|---------|
| Success | 70% | 70% | 74% | 72% | 64% | 68% |
| Non-Success | 11% | 11% | 13% | 16% | 17% | 16% |
| Withdrawal | 19% | 19% | 13% | 12% | 19% | 16% |
| Total Percent | 100% | 100% | 100% | 100% | 100% | 100% |
| Total Enrolled | 209 | 157 | 188 | 161 | 206 | 158 |

Chabot
Success Rates By Gender and Semester
Course: CHEM 30A



| | Fa 2007 | Sp 2008 | Fa 2008 | Sp 2009 | Fa 2009 | Sp 2010 |
|----------------|------------|------------|------------|------------|------------|------------|
| Men | | | | | | |
| Success | 72% | 59% | 79% | 76% | 65% | 70% |
| Non-Success | 6% | 18% | 13% | 12% | 18% | 14% |
| Withdrawal | 21% | 23% | 8% | 12% | 18% | 16% |
| Total Percent | 100% | 100% | 100% | 100% | 100% | 100% |
| Total Enrolled | 47 | 39 | 53 | 42 | 51 | 44 |
| Women | | | | | | |
| Success | 69% | 74% | 73% | 71% | 63% | 67% |
| Non-Success | 13% | 8% | 13% | 16% | 17% | 17% |
| Withdrawal | 18% | 18% | 14% | 13% | 20% | 17% |
| Total Percent | 100% | 100% | 100% | 100% | 100% | 100% |
| Total Enrolled | 160 | 118 | 133 | 116 | 152 | 114 |

Chabot
Success Rates By Ethnicity and Semester
Course: CHEM 30A



| | Fa 2007 | Sp 2008 | Fa 2008 | Sp 2009 | Fa 2009 | Sp 2010 |
|-------------------------|---------|---------|---------|---------|---------|---------|
| African American | | | | | | |
| Success | 52% | 64% | 67% | 50% | 47% | 67% |
| Non-Success | 19% | 21% | 27% | 21% | 27% | 19% |
| Withdrawal | 29% | 14% | 7% | 29% | 27% | 14% |
| Total Percent | 100% | 100% | 100% | 100% | 100% | 100% |
| Total Enrolled | 21 | 14 | 15 | 14 | 15 | 21 |
| Asian | | | | | | |
| Success | 77% | 65% | 92% | 73% | 75% | 70% |
| Non-Success | 5% | 23% | 5% | 15% | 9% | 17% |
| Withdrawal | 18% | 12% | 3% | 12% | 16% | 13% |
| Total Percent | 100% | 100% | 100% | 100% | 100% | 100% |
| Total Enrolled | 61 | 26 | 38 | 33 | 44 | 30 |
| Filipino | | | | | | |
| Success | 83% | 76% | 75% | 71% | 69% | 60% |
| Non-Success | 11% | 9% | 17% | 18% | 14% | 26% |
| Withdrawal | 6% | 15% | 8% | 11% | 18% | 14% |
| Total Percent | 100% | 100% | 100% | 100% | 100% | 100% |
| Total Enrolled | 36 | 34 | 48 | 38 | 51 | 35 |
| Latino | | | | | | |
| Success | 64% | 69% | 68% | 78% | 57% | 72% |
| Non-Success | 11% | 6% | 8% | 7% | 21% | 9% |
| Withdrawal | 25% | 25% | 24% | 15% | 21% | 19% |
| Total Percent | 100% | 100% | 100% | 100% | 100% | 100% |
| Total Enrolled | 36 | 36 | 37 | 27 | 47 | 32 |
| Middle Eastern | | | | | | |
| Success | 0% | 0% | 0% | 0% | 0% | 0% |
| Non-Success | 0% | 0% | 0% | 0% | 100% | 0% |
| Withdrawal | 0% | 0% | 0% | 0% | 0% | 0% |

| | | | | | | | |
|-------------------------|----------------|------|------|------|------|------|------|
| | Total Percent | 0% | 0% | 0% | 0% | 100% | 0% |
| | Total Enrolled | 0 | 0 | 0 | 0 | 1 | 0 |
| Native American | | | | | | | |
| | Success | 0% | 100% | 0% | 100% | 0% | 100% |
| | Non-Success | 0% | 0% | 0% | 0% | 0% | 0% |
| | Withdrawal | 0% | 0% | 0% | 0% | 100% | 0% |
| | Total Percent | 0% | 100% | 0% | 100% | 100% | 100% |
| | Total Enrolled | 0 | 1 | 0 | 1 | 1 | 2 |
| Pacific Islander | | | | | | | |
| | Success | 14% | 38% | 33% | 88% | 50% | 83% |
| | Non-Success | 57% | 25% | 33% | 13% | 25% | 0% |
| | Withdrawal | 29% | 38% | 33% | 0% | 25% | 17% |
| | Total Percent | 100% | 100% | 100% | 100% | 100% | 100% |
| | Total Enrolled | 7 | 8 | 6 | 8 | 8 | 6 |
| White | | | | | | | |
| | Success | 67% | 72% | 74% | 70% | 67% | 70% |
| | Non-Success | 10% | 3% | 6% | 17% | 20% | 13% |
| | Withdrawal | 23% | 24% | 19% | 13% | 13% | 17% |
| | Total Percent | 100% | 100% | 100% | 100% | 100% | 100% |
| | Total Enrolled | 30 | 29 | 31 | 30 | 30 | 23 |