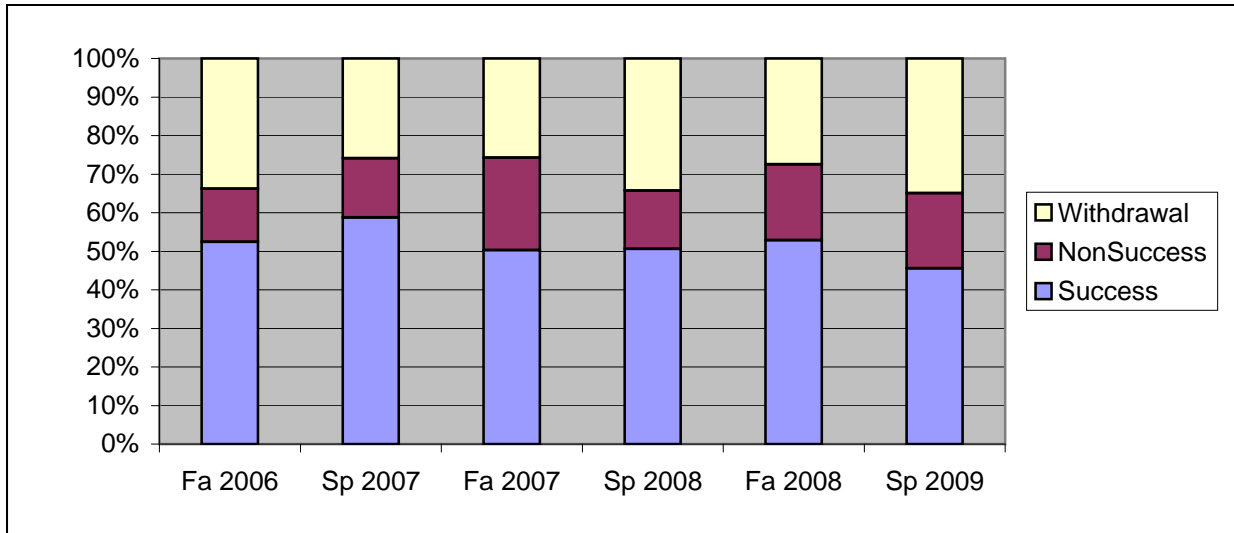
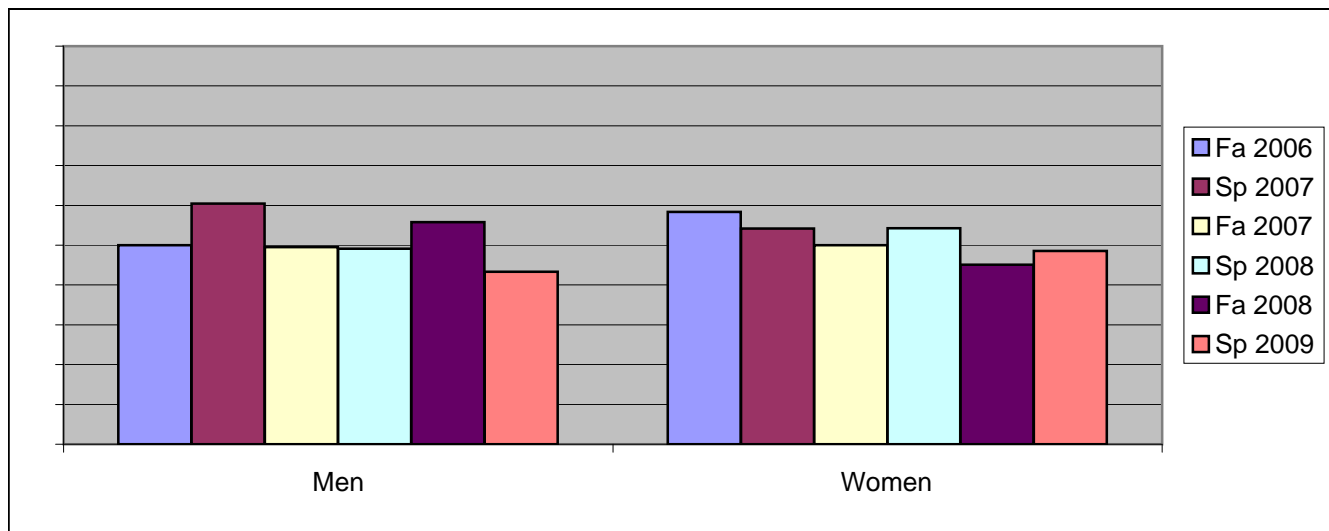


Chabot  
Success, Non-Success, and Withdrawal Rates By Semester  
Course: MTH 37



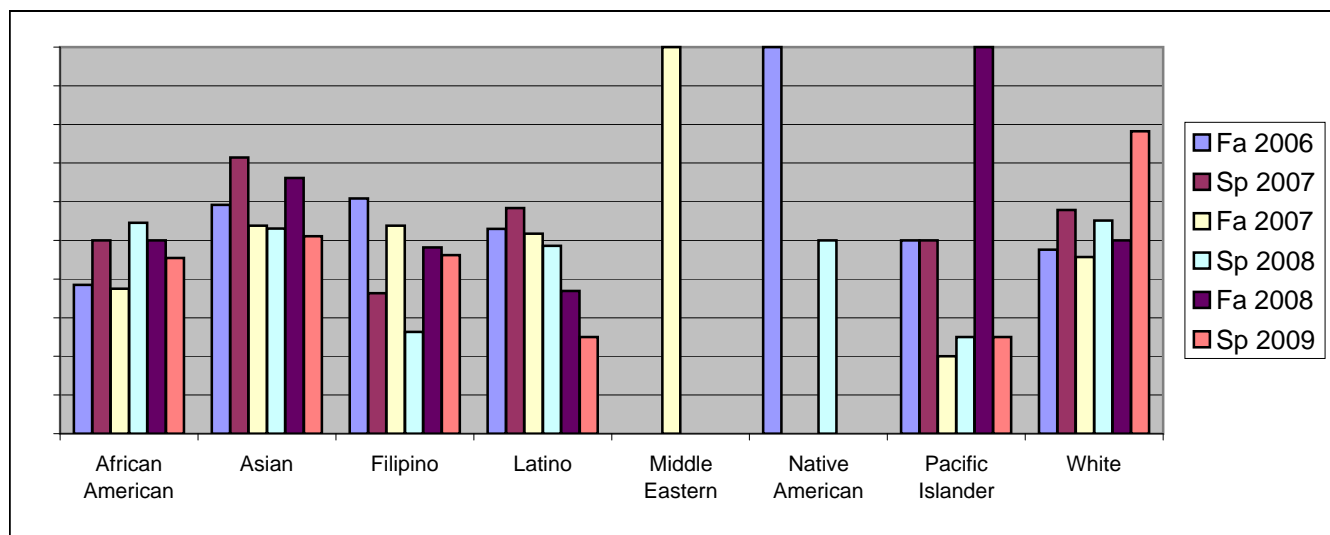
	Fa 2006	Sp 2007	Fa 2007	Sp 2008	Fa 2008	Sp 2009
Success	52%	59%	50%	51%	53%	46%
Non-Success	14%	15%	24%	15%	20%	20%
Withdrawal	34%	26%	26%	34%	27%	35%
Total Percent	100%	100%	100%	100%	100%	100%
Total Enrolled	<b>166</b>	<b>143</b>	<b>163</b>	<b>172</b>	<b>193</b>	<b>169</b>

Chabot  
Success Rates By Gender and Semester  
Course: MTH 37



	Fa 2006	Sp 2007	Fa 2007	Sp 2008	Fa 2008	Sp 2009
<b>Men</b>						
Success	50%	60%	50%	49%	56%	43%
Non-Success	16%	18%	24%	16%	18%	18%
Withdrawal	34%	22%	27%	35%	27%	39%
Total Percent	100%	100%	100%	100%	100%	100%
Total Enrolled	<b>104</b>	<b>91</b>	<b>109</b>	<b>110</b>	<b>113</b>	<b>97</b>
<b>Women</b>						
Success	58%	54%	50%	54%	45%	49%
Non-Success	7%	13%	25%	12%	25%	23%
Withdrawal	35%	33%	25%	34%	30%	29%
Total Percent	100%	100%	100%	100%	100%	100%
Total Enrolled	<b>60</b>	<b>48</b>	<b>52</b>	<b>59</b>	<b>71</b>	<b>70</b>

Chabot  
Success Rates By Ethnicity and Semester  
Course: MTH 37



	Fa 2006	Sp 2007	Fa 2007	Sp 2008	Fa 2008	Sp 2009
<b>African American</b>						
Success	38%	50%	38%	55%	50%	45%
Non-Success	15%	14%	50%	9%	30%	9%
Withdrawal	46%	36%	13%	36%	20%	45%
Total Percent	100%	100%	100%	100%	100%	100%
Total Enrolled	13	14	8	11	10	11
<b>Asian</b>						
Success	59%	71%	54%	53%	66%	51%
Non-Success	14%	11%	23%	20%	12%	22%
Withdrawal	27%	17%	23%	27%	22%	27%
Total Percent	100%	100%	100%	100%	100%	100%
Total Enrolled	49	35	39	49	68	45
<b>Filipino</b>						
Success	61%	36%	54%	26%	48%	46%
Non-Success	9%	27%	27%	21%	15%	12%
Withdrawal	30%	36%	19%	53%	37%	42%
Total Percent	100%	100%	100%	100%	100%	100%
Total Enrolled	23	11	26	19	27	26
<b>Latino</b>						
Success	53%	58%	52%	49%	37%	25%
Non-Success	12%	22%	14%	9%	30%	32%
Withdrawal	35%	19%	34%	43%	33%	43%
Total Percent	100%	100%	100%	100%	100%	100%
Total Enrolled	34	36	29	35	46	44
<b>Middle Eastern</b>						
Success	0%	0%	100%	0%	0%	0%
Non-Success	0%	0%	0%	0%	0%	100%
Withdrawal	0%	0%	0%	0%	0%	0%
Total Percent	0%	0%	100%	0%	0%	100%
Total Enrolled	0	0	1	0	0	1
<b>Native American</b>						
Success	100%	0%	0%	50%	0%	0%
Non-Success	0%	0%	0%	50%	0%	0%
Withdrawal	0%	100%	100%	0%	0%	0%

	Total Percent	100%	100%	100%	100%	0%	0%
	Total Enrolled	<b>2</b>	<b>2</b>	<b>1</b>	<b>2</b>	<b>0</b>	<b>0</b>
<b>Pacific Islander</b>							
	Success	50%	50%	20%	25%	100%	25%
	Non-Success	25%	13%	40%	50%	0%	13%
	Withdrawal	25%	38%	40%	25%	0%	63%
	Total Percent	100%	100%	100%	100%	100%	100%
	Total Enrolled	<b>4</b>	<b>8</b>	<b>5</b>	<b>4</b>	<b>1</b>	<b>8</b>
<b>White</b>							
	Success	48%	58%	46%	55%	50%	78%
	Non-Success	14%	11%	29%	10%	18%	9%
	Withdrawal	38%	32%	26%	34%	32%	13%
	Total Percent	100%	100%	100%	100%	100%	100%
	Total Enrolled	<b>21</b>	<b>19</b>	<b>35</b>	<b>29</b>	<b>22</b>	<b>23</b>