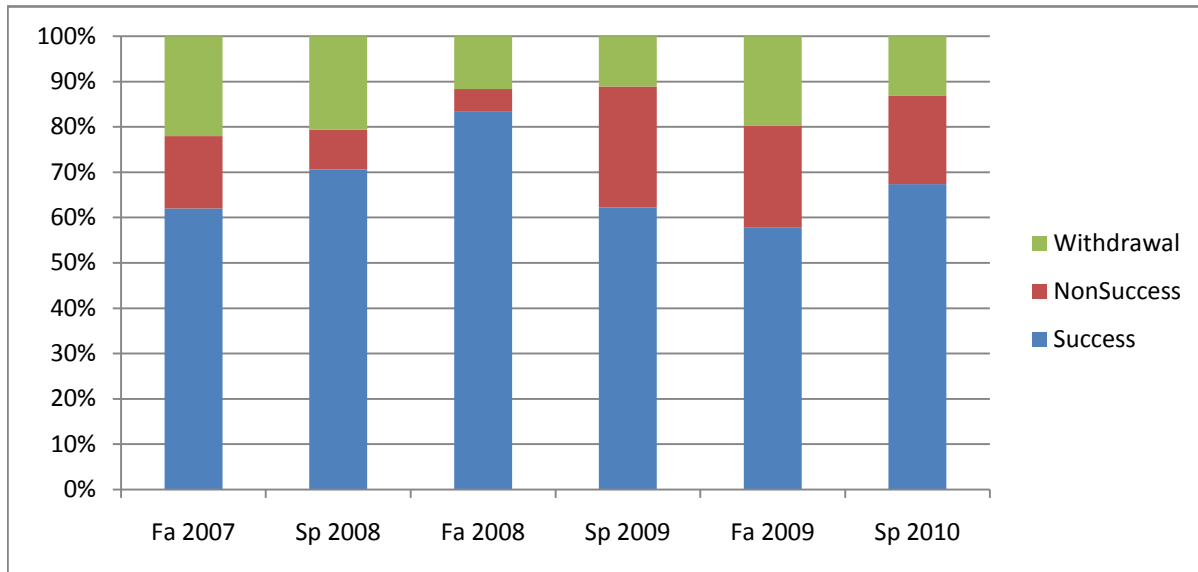
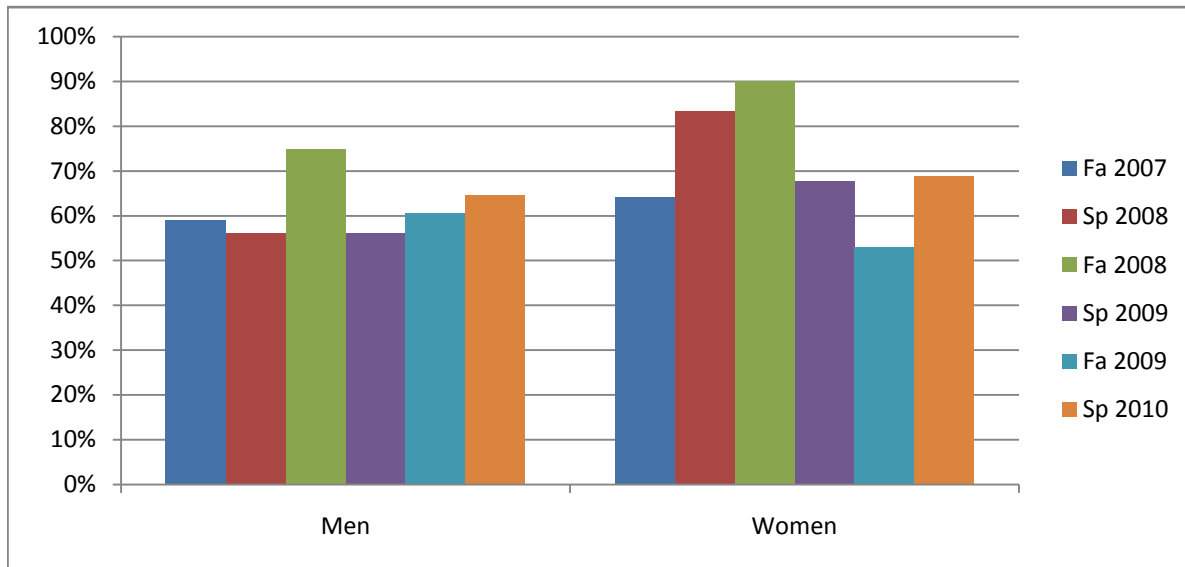


Chabot
Success, Non-Success, and Withdrawal Rates By Semester
Course: MTH 40



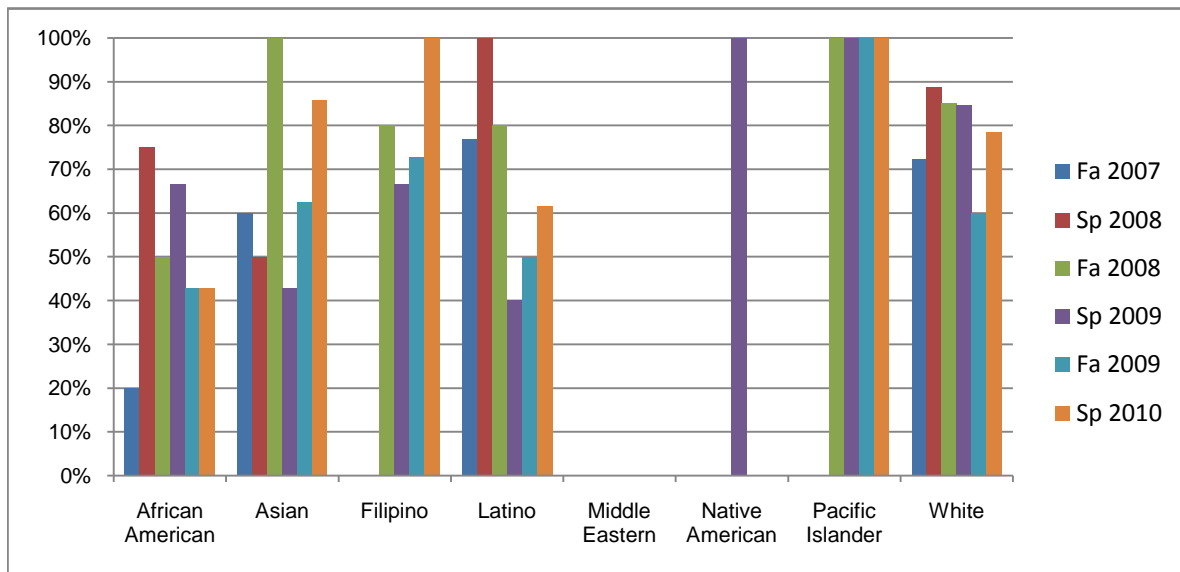
| | Fa 2007 | Sp 2008 | Fa 2008 | Sp 2009 | Fa 2009 | Sp 2010 |
|----------------|---------|---------|---------|---------|---------|---------|
| Success | 62% | 71% | 83% | 62% | 58% | 67% |
| Non-Success | 16% | 9% | 5% | 27% | 23% | 20% |
| Withdrawal | 22% | 21% | 12% | 11% | 20% | 13% |
| Total Percent | 100% | 100% | 100% | 100% | 100% | 100% |
| Total Enrolled | 50 | 34 | 60 | 45 | 71 | 46 |

Chabot
Success Rates By Gender and Semester
Course: MTH 40



| | Fa 2007 | Sp 2008 | Fa 2008 | Sp 2009 | Fa 2009 | Sp 2010 |
|----------------|---------|---------|---------|---------|---------|---------|
| Men | | | | | | |
| Success | 59% | 56% | 75% | 56% | 61% | 65% |
| Non-Success | 18% | 13% | 11% | 25% | 18% | 24% |
| Withdrawal | 23% | 31% | 14% | 19% | 21% | 12% |
| Total Percent | 100% | 100% | 100% | 100% | 100% | 100% |
| Total Enrolled | 22 | 16 | 28 | 16 | 38 | 17 |
| Women | | | | | | |
| Success | 64% | 83% | 90% | 68% | 53% | 69% |
| Non-Success | 14% | 6% | 0% | 29% | 28% | 17% |
| Withdrawal | 21% | 11% | 10% | 4% | 19% | 14% |
| Total Percent | 100% | 100% | 100% | 100% | 100% | 100% |
| Total Enrolled | 28 | 18 | 30 | 28 | 32 | 29 |

Chabot
Success Rates By Ethnicity and Semester
Course: MTH 40



| | Fa 2007 | Sp 2008 | Fa 2008 | Sp 2009 | Fa 2009 | Sp 2010 |
|-------------------------|---------|---------|---------|---------|---------|---------|
| African American | | | | | | |
| Success | 20% | 75% | 50% | 67% | 43% | 43% |
| Non-Success | 60% | 0% | 0% | 33% | 29% | 14% |
| Withdrawal | 20% | 25% | 50% | 0% | 29% | 43% |
| Total Percent | 100% | 100% | 100% | 100% | 100% | 100% |
| Total Enrolled | 5 | 4 | 2 | 6 | 7 | 7 |
| Asian | | | | | | |
| Success | 60% | 50% | 100% | 43% | 63% | 86% |
| Non-Success | 0% | 0% | 0% | 57% | 0% | 0% |
| Withdrawal | 40% | 50% | 0% | 0% | 38% | 14% |
| Total Percent | 100% | 100% | 100% | 100% | 100% | 100% |
| Total Enrolled | 5 | 2 | 5 | 7 | 8 | 7 |
| Filipino | | | | | | |
| Success | 0% | 0% | 80% | 67% | 73% | 100% |
| Non-Success | 33% | 33% | 0% | 33% | 18% | 0% |
| Withdrawal | 67% | 67% | 20% | 0% | 9% | 0% |
| Total Percent | 100% | 100% | 100% | 100% | 100% | 100% |
| Total Enrolled | 3 | 3 | 10 | 3 | 11 | 1 |
| Latino | | | | | | |
| Success | 77% | 100% | 80% | 40% | 50% | 62% |
| Non-Success | 8% | 0% | 13% | 0% | 22% | 31% |
| Withdrawal | 15% | 0% | 7% | 60% | 28% | 8% |
| Total Percent | 100% | 100% | 100% | 100% | 100% | 100% |
| Total Enrolled | 13 | 5 | 15 | 5 | 18 | 13 |
| Middle Eastern | | | | | | |
| Success | 0% | 0% | 0% | 0% | 0% | 0% |
| Non-Success | 0% | 0% | 0% | 0% | 0% | 0% |
| Withdrawal | 0% | 0% | 0% | 0% | 0% | 0% |

| | | | | | | | |
|-------------------------|----------------|------|------|------|------|------|------|
| | Total Percent | 0% | 0% | 0% | 0% | 0% | 0% |
| | Total Enrolled | 0 | 0 | 0 | 0 | 0 | 0 |
| Native American | | | | | | | |
| | Success | 0% | 0% | 0% | 100% | 0% | 0% |
| | Non-Success | 0% | 0% | 0% | 0% | 0% | 0% |
| | Withdrawal | 0% | 0% | 0% | 0% | 0% | 0% |
| | Total Percent | 0% | 0% | 0% | 100% | 0% | 0% |
| | Total Enrolled | 0 | 0 | 0 | 1 | 0 | 0 |
| Pacific Islander | | | | | | | |
| | Success | 0% | 0% | 100% | 100% | 100% | 100% |
| | Non-Success | 0% | 0% | 0% | 0% | 0% | 0% |
| | Withdrawal | 0% | 0% | 0% | 0% | 0% | 0% |
| | Total Percent | 0% | 0% | 100% | 100% | 100% | 100% |
| | Total Enrolled | 0 | 0 | 1 | 1 | 2 | 1 |
| White | | | | | | | |
| | Success | 72% | 89% | 85% | 85% | 60% | 79% |
| | Non-Success | 6% | 0% | 5% | 15% | 30% | 21% |
| | Withdrawal | 22% | 11% | 10% | 0% | 10% | 0% |
| | Total Percent | 100% | 100% | 100% | 100% | 100% | 100% |
| | Total Enrolled | 18 | 9 | 20 | 13 | 20 | 14 |