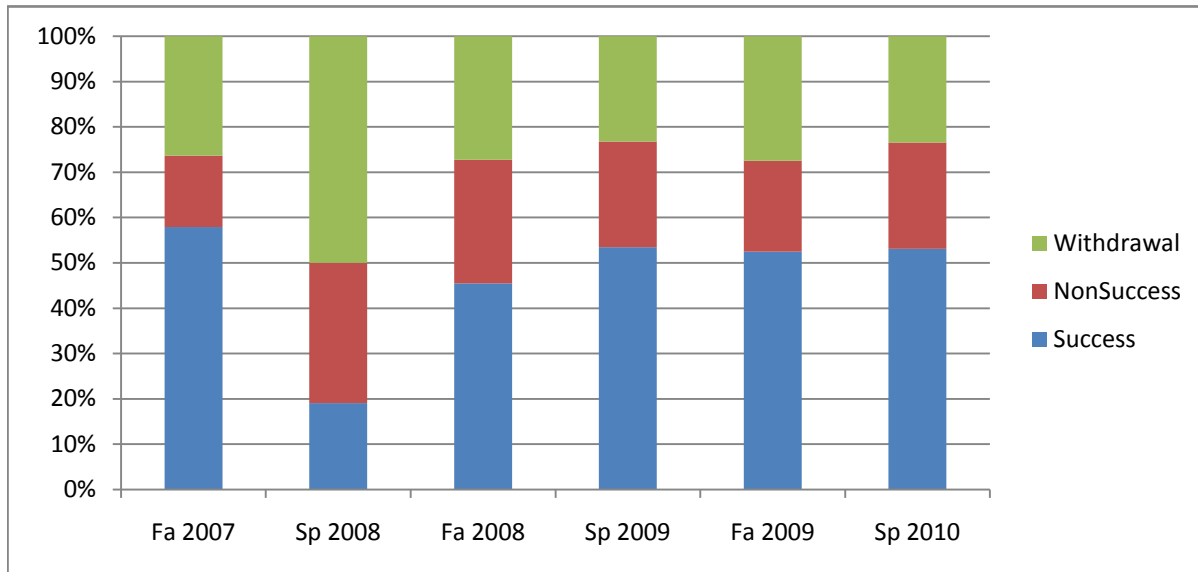
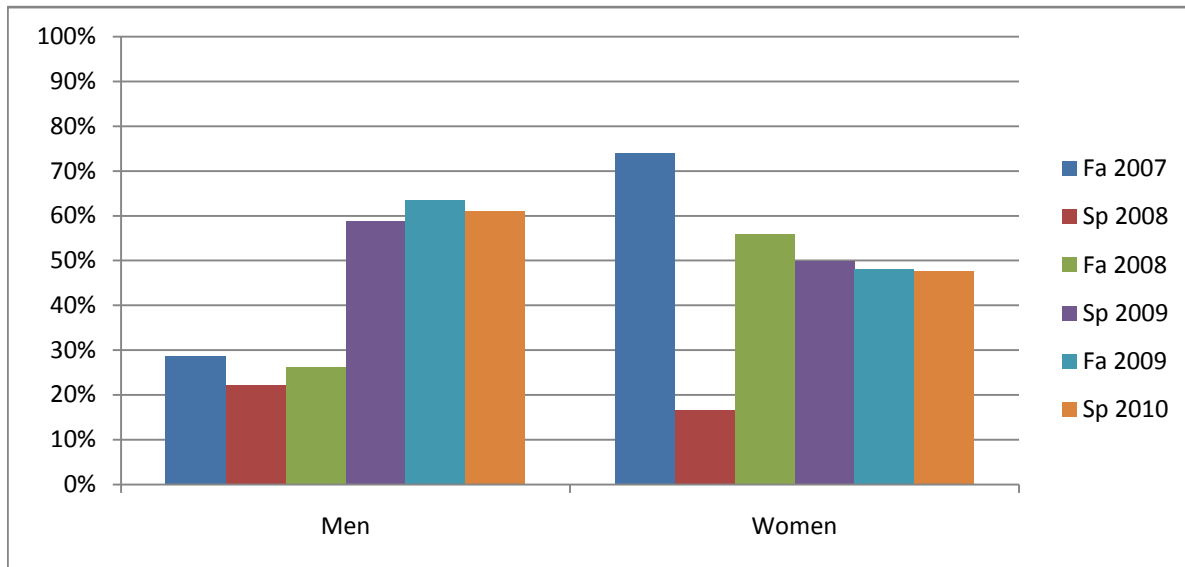


Chabot
Success, Non-Success, and Withdrawal Rates By Semester
Course: MTH 65B



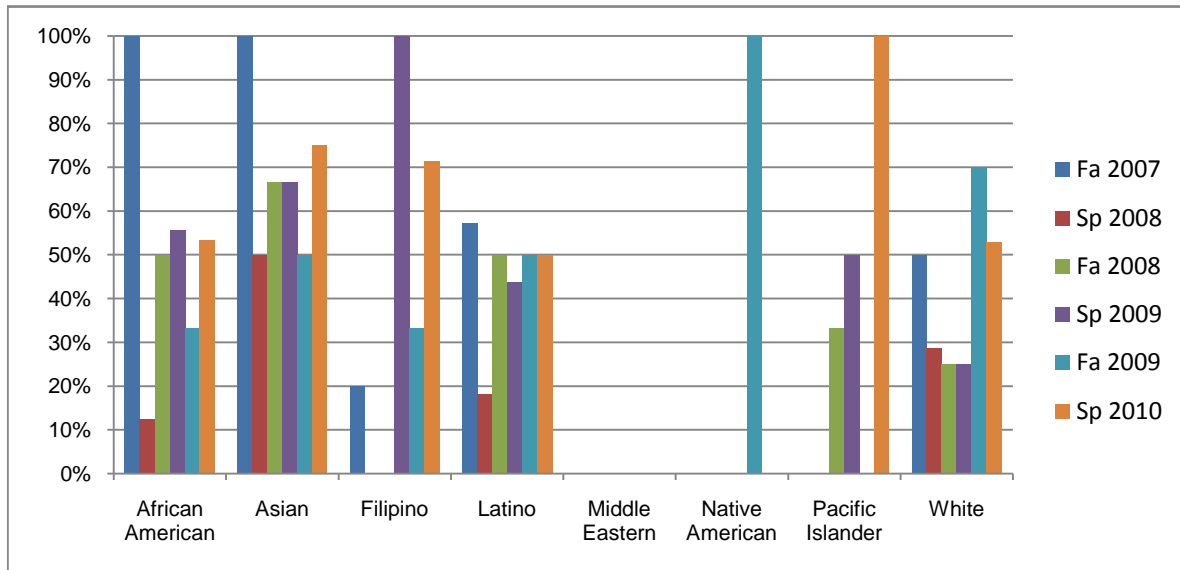
| | Fa 2007 | Sp 2008 | Fa 2008 | Sp 2009 | Fa 2009 | Sp 2010 |
|----------------|---------|---------|---------|---------|---------|---------|
| Success | 58% | 19% | 45% | 53% | 53% | 53% |
| Non-Success | 16% | 31% | 27% | 23% | 20% | 23% |
| Withdrawal | 26% | 50% | 27% | 23% | 28% | 23% |
| Total Percent | 100% | 100% | 100% | 100% | 100% | 100% |
| Total Enrolled | 38 | 42 | 55 | 43 | 40 | 81 |

Chabot
Success Rates By Gender and Semester
Course: MTH 65B



| | Fa 2007 | Sp 2008 | Fa 2008 | Sp 2009 | Fa 2009 | Sp 2010 |
|----------------|---------|---------|---------|---------|---------|---------|
| Men | | | | | | |
| Success | 29% | 22% | 26% | 59% | 64% | 61% |
| Non-Success | 36% | 33% | 37% | 18% | 36% | 22% |
| Withdrawal | 36% | 44% | 37% | 24% | 0% | 17% |
| Total Percent | 100% | 100% | 100% | 100% | 100% | 100% |
| Total Enrolled | 14 | 18 | 19 | 17 | 11 | 36 |
| Women | | | | | | |
| Success | 74% | 17% | 56% | 50% | 48% | 48% |
| Non-Success | 4% | 29% | 21% | 27% | 15% | 23% |
| Withdrawal | 22% | 54% | 24% | 23% | 37% | 30% |
| Total Percent | 100% | 100% | 100% | 100% | 100% | 100% |
| Total Enrolled | 23 | 24 | 34 | 26 | 27 | 44 |

Chabot
Success Rates By Ethnicity and Semester
Course: MTH 65B



| | Fa 2007 | Sp 2008 | Fa 2008 | Sp 2009 | Fa 2009 | Sp 2010 |
|-------------------------|---------|---------|---------|---------|---------|---------|
| African American | | | | | | |
| Success | 100% | 13% | 50% | 56% | 33% | 53% |
| Non-Success | 0% | 38% | 40% | 22% | 33% | 27% |
| Withdrawal | 0% | 50% | 10% | 22% | 33% | 20% |
| Total Percent | 100% | 100% | 100% | 100% | 100% | 100% |
| Total Enrolled | 5 | 8 | 10 | 9 | 6 | 15 |
| Asian | | | | | | |
| Success | 100% | 50% | 67% | 67% | 50% | 75% |
| Non-Success | 0% | 50% | 17% | 0% | 0% | 25% |
| Withdrawal | 0% | 0% | 17% | 33% | 50% | 0% |
| Total Percent | 100% | 100% | 100% | 100% | 100% | 100% |
| Total Enrolled | 4 | 2 | 6 | 3 | 4 | 4 |
| Filipino | | | | | | |
| Success | 20% | 0% | 0% | 100% | 33% | 71% |
| Non-Success | 0% | 100% | 25% | 0% | 67% | 14% |
| Withdrawal | 80% | 0% | 75% | 0% | 0% | 14% |
| Total Percent | 100% | 100% | 100% | 100% | 100% | 100% |
| Total Enrolled | 5 | 2 | 4 | 4 | 3 | 7 |
| Latino | | | | | | |
| Success | 57% | 18% | 50% | 44% | 50% | 50% |
| Non-Success | 21% | 36% | 17% | 38% | 25% | 21% |
| Withdrawal | 21% | 45% | 33% | 19% | 25% | 29% |
| Total Percent | 100% | 100% | 100% | 100% | 100% | 100% |
| Total Enrolled | 14 | 11 | 18 | 16 | 12 | 28 |
| Middle Eastern | | | | | | |
| Success | 0% | 0% | 0% | 0% | 0% | 0% |
| Non-Success | 100% | 0% | 100% | 0% | 0% | 100% |
| Withdrawal | 0% | 100% | 0% | 0% | 0% | 0% |

| | | | | | | |
|-------------------------|------|------|------|------|------|------|
| Total Percent | 100% | 100% | 100% | 0% | 0% | 100% |
| Total Enrolled | 1 | 1 | 1 | 0 | 0 | 1 |
| Native American | | | | | | |
| Success | 0% | 0% | 0% | 0% | 100% | 0% |
| Non-Success | 0% | 0% | 0% | 0% | 0% | 0% |
| Withdrawal | 100% | 0% | 0% | 0% | 0% | 100% |
| Total Percent | 100% | 0% | 0% | 0% | 100% | 100% |
| Total Enrolled | 1 | 0 | 0 | 0 | 1 | 1 |
| Pacific Islander | | | | | | |
| Success | 0% | 0% | 33% | 50% | 0% | 100% |
| Non-Success | 100% | 100% | 67% | 25% | 0% | 0% |
| Withdrawal | 0% | 0% | 0% | 25% | 0% | 0% |
| Total Percent | 100% | 100% | 100% | 100% | 0% | 100% |
| Total Enrolled | 1 | 1 | 3 | 4 | 0 | 3 |
| White | | | | | | |
| Success | 50% | 29% | 25% | 25% | 70% | 53% |
| Non-Success | 17% | 0% | 25% | 25% | 10% | 18% |
| Withdrawal | 33% | 71% | 50% | 50% | 20% | 29% |
| Total Percent | 100% | 100% | 100% | 100% | 100% | 100% |
| Total Enrolled | 6 | 14 | 8 | 4 | 10 | 17 |